

The Purbeck Gazette



August 2020
Issue no. 247

20,000 Copies:
Swanage to Dorchester,
Lulworth to Bere Regis

CORONAVIRUS SHUTDOWN EDITION FOUR!



Wareham In Bloom. Pg 42



Waste Warrior Oly! Pg 18



Studland's Dynamic Dunes. Pg 36 - 37



Prince Albert Memorial Update. Pg 20 - 23



From **REPAIR TO REPLACEMENT**

Windows, Doors, Conservatories, Fascias & Glazing. Garden Rooms now available.

Purbeck Conservatories & Windows Ltd

FENSA
Registered Company

For a **FREE** quotation and prompt service, please call us on:
01929 554321 or 07734 534286
"Unbeatable prices!"



This space is now available!
Advertise to our readers!
Let them know you're out there!
Call KAY on 01929 424239 ext.1

SWANAGE TYRES
NOW TESTING CLASS 4 & CLASS 7 VEHICLES!
6 Victoria Avenue Industrial Estate, Swanage
01929 421398

Gasways Heating
Plumbing and Heating Specialists
Domestic & Commercial
01929 427713 / 07889 409584
Proud members of **Checkatrade.com**
Where reputation matters
Gasways Heating

Editor's note...



Welcome to the August edition of your Purbeck Gazette! Yes, I know - we're still online where we promised to be 'back in print' from this edition, but the best laid plans and all that... we're sadly still owed a significant amount of money by local advertisers from adverts they ran in the first quarter of the year - we're not quite at the point of naming and shaming, but needless to say,

that's had an impact on us being able to get back to full publishing again. Sorry folks - but there's no excuse for not paying for adverts you booked and we published prior to March this year! You know who you are - whatever the situation, just email us and we'll work something out!

We've spoken to a ton of local businesses who wanted August to try and build up some cash reserves whilst they can with as little expenditure as possible. We have therefore agreed with our clients to go back to publishing in print from September onwards. Our September edition will be heavily focused on making it absolutely clear to local people that this winter, they need to support local shops on a regular basis or literally face losing many of them. Many local outlets have already booked their advertising for our September edition and we'll hopefully see some new advertisers come on-board to communicate with you directly. Don't forget that every paid advert helps us publish editorial content - which brings in no revenue and costs us £400 per page to print each month. Our advertisers therefore publish the Gazette and all of your words and information printed within. Now is the time to support them financially - please shop intelligently - and locally!

The Purbeck Gazette is delivered by:



We distribute 20,000 copies of the Purbeck Gazette every month to properties in Purbeck utilising Logiforce GPS-tracked delivery teams.

(Residents in blocks of flats, or who live up long driveways or in lesser populated areas will not get a door-to-door delivery. You will not receive a copy if you display a 'no junk mail' sticker on your letterbox)
Purbeck has a population of approx. 45,300, we print & distribute 20,000 copies for Purbeck and further afield (Crossways, Broadmayne, Bloxworth etc).

You will not therefore ALL get a paper copy! 1 in 3 properties get a copy. We ensure a good spread of distribution throughout the whole area to get the best response for our advertisers, who are our business customers.

We publish in-full online for those households who do not receive a paper copy through the door.
See: www.purbeckgazette.com

The **September 2020** edition has a **deadline** of 7th August.

The **October 2020** edition has a **deadline** of 9th September.

Public Notices & Information



Compiled for the Purbeck Gazette by
National Coastwatch Institution, Swanage



Solar & Tidal Predictions - Aug '20

Peveril Ledge, Swanage

Date	HW	LW	HW	LW	HW	Moon / Tides	Sunrise	Sunset
01-Aug		02:21	08:04	14:47	20:35		05:34	20:53
02-Aug		03:14	08:57	15:38	21:27		05:35	20:52
03-Aug		04:02	09:41	16:25	22:09	FM	05:37	20:50
04-Aug		04:47	10:20	17:08	22:46		05:38	20:49
05-Aug		05:28	10:59	17:49	23:22	SP	05:40	20:47
06-Aug		06:07	11:36	18:27	23:56		05:41	20:45
07-Aug		06:43	12:11	19:02			05:43	20:44
08-Aug	00:30	07:15	12:44	19:33			05:44	20:42
09-Aug	01:02	07:45	13:13	20:04			05:46	20:40
10-Aug	01:32	08:17	13:43	20:39			05:47	20:38
11-Aug	02:05	08:57	14:20	21:24			05:49	20:36
12-Aug	02:54	09:47	15:16	22:23			05:50	20:35
13-Aug	04:20	10:55	16:41	23:41		NP	05:52	20:33
14-Aug	05:38	12:19	17:57				05:53	20:31
15-Aug		00:58	06:43	13:29	18:59		05:55	20:29
16-Aug		02:01	07:35	14:27	19:53		05:56	20:27
17-Aug		02:54	08:22	15:18	20:40		05:58	20:25
18-Aug		03:42	09:06	16:05	21:25		05:59	20:23
19-Aug		04:27	09:48	16:49	22:07	NM	06:01	20:21
20-Aug		05:10	10:29	17:31	22:48		06:02	20:19
21-Aug		05:51	11:11	18:12	23:30	SP	06:04	20:17
22-Aug		06:32	11:54	18:54			06:05	20:15
23-Aug	00:13	07:14	12:38	19:37			06:07	20:13
24-Aug	00:58	07:58	13:25	20:25			06:09	20:11
25-Aug	01:48	08:49	14:17	21:21			06:10	20:09
26-Aug	02:47	09:54	15:18	22:37			06:12	20:07
27-Aug	03:59	11:19	16:32	23:57			06:13	20:05
28-Aug	05:25	12:34	18:06			NP	06:15	20:03
29-Aug		01:09	06:50	13:41	19:35		06:16	20:01
30-Aug		02:10	07:58	14:38	20:36		06:18	19:58
31-Aug		03:02	08:47	15:26	21:21		06:19	19:56

NM = New Moon + FM = Full Moon + NP = Neap tides + SP = Spring Tides

All times are local

e802

Swanage Town Council Meetings - August 2020

ALL MEETINGS OPEN TO THE PUBLIC SUSPENDED - PLEASE
CONTACT THE COUNCIL DIRECTLY FOR INFORMATION

Wareham Town Council Meetings - August 2020

ALL MEETINGS OPEN TO THE PUBLIC SUSPENDED - PLEASE
CONTACT THE COUNCIL DIRECTLY FOR INFORMATION

Dorset Council

For details of council meetings, councillors and decisions please use the web address: www.dorsetcouncil.gov.uk/committees

Alternatively, if you use the old 'Dorsetforyou' address:

www.dorsetforyou.gov.uk/committees - you will be redirected to the same link called 'committee meetings and papers'.

About Purbeck Media Ltd

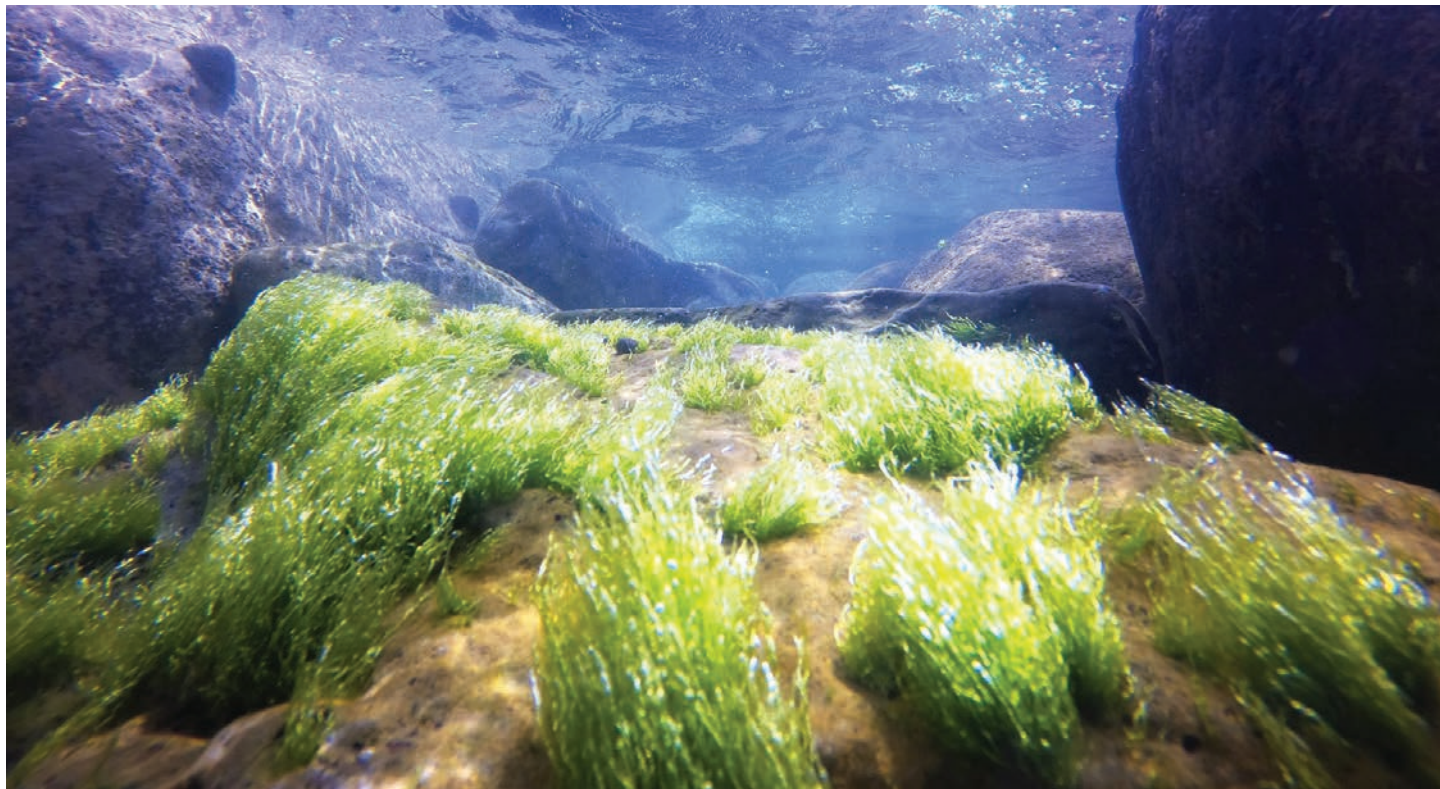
The Purbeck Gazette prints 20,000 copies every month and delivers throughout the region from Swanage to Dorchester, Lulworth to Bere Regis. The Purbeck Gazette is published by Purbeck Media Ltd. All editing, graphic design and lay-up is completed in-house by Purbeck Media Ltd. The Purbeck Gazette is printed by Blackmore Ltd of Shaftesbury and delivered by Logiforce GPS-tracked distribution. The Purbeck Gazette website is managed and edited on-site by Purbeck Media Ltd. Purbeck Media Ltd also publishes The Purbeck Guidette, the Purbeck Visitor Guide. All rights reserved.

OUR TEAM: The Gazette team consists of: Nico Johnson, Editor, Kay Jenkins, Sales & Accounts Executive, David Hollister, Columnist, John Garner, Columnist, Regula Wright, Columnist. Purbeck Designs (some graphics), Kim Steeden, Spotlight Diary Editor.

VOLUNTEERS: A massive thanks to our volunteers, whose help is invaluable each month. Our proof readers are the very professional: Gerry Norris and David Holman, with volunteer Photographer, Tim Crabb, also on-hand.

Telephone Sales & Client Contact

We reserve the right to maintain contact with our advertising clients, past and present, through the use of telephone calls and emails. We retain customer's names, addresses, emails and telephone numbers on file. If you do not wish to hear from us to be reminded of upcoming deadlines, please do let us know!



What lies beneath? Underwater seascapes on page 34

Contents

ARTS & ENTERTAINMENT	42
BUSINESS MATTERS	26
COMMUNITY MATTERS	6
COUNCIL MEETINGS	2
FEATURES	
A Glimpse Under The Waves	34
Blast From The Past	16
Gazette Gardening	39
John Garner writes - Small Steps	33
National Coastwatch	10
New Mayor For Wareham	7
Prince Albert Memorial Update	20 - 23
Studland's Dynamic Dunes	36 - 37
Swanage Blues Festival Cancellation	44
Telling It Like It Is - David Hollister writes	6
Wareham In Bloom	42
Waste Warrior Oly!	18
FOOD - Godlingston Manor Kitchen Gardens	30
HEALTH & BEAUTY	45
LETTERS	4
MOTORING	25
NATURAL MATTERS	33
TRADE ADVERTS	51
DIARY SPOTLIGHT	47

CONTACT US

17b Commercial Road
Swanage, Dorset BH19 1DF
www.purbeckgazette.co.uk

**THE OFFICE IS NOT OPEN
TO GENERAL PUBLIC.
ADVERTISERS ONLY PLEASE!**

Editorial Enquiries:

Editor, Nico Johnson
01929 424239

ed@purbeckgazette.co.uk

Advertising Sales:

at: www.purbeckgazette.co.uk
Kay Jenkins 01929 424239 ext.1

TO ADVERTISE

See our website shop at:
www.purbeckgazette.co.uk
for rate card, booking & payment
Prices from £25.80 (inc VAT)
Discounts available

The legal stuff...

Every effort is made to ensure the accuracy of information contained in this magazine, but the Editor is unable to accept responsibility for any omissions or errors that may occur.

The inclusion of any article or advertisement does not constitute any form of accreditation or approval by the Editor.

**No part, written or visual,
of this publication may be
reproduced without written
permission of the Editor.**

DEADLINE FOR SEPTEMBER IS 12 NOON, 7th AUGUST

Your Letters

The clue is in the heading above - these are our readers' letters. They are NOT articles, they are letters. By you. Our readers. They are not our letters, they are yours - your letters. Simple!

Please send all letters to ed@purbeckgazette.co.uk with 'letter to the editor' in the email subject line. Please do not exceed 350 words. If handwritten, please ensure it is short and legible.

PLEASE DO NOT DUPLICATE LETTERS TO OTHER PUBLICATIONS - WE DO NOT PRINT MULTI-PUBLICATION LETTERS.

SEPTEMBER edition deadline: noon, 7th AUG

Declare War On Climate Change

Dear Editor,

I am afraid that the public are being misled into believing that the Government Climate Change carbon emissions' target is all that is necessary for the UK share of responsibility to be achieved.

The present target only covers about half of our fair share. An additional six tonnes per person per year at least, needs to be added to the total inland emissions of eleven tonnes, for the imports we purchase each year, to replace the stuff we throw away as scrap. More needs to be added to cover the considerable amount of energy used for international aviation travel and freight, and for marine ocean freight. For example, a single return journey by air of 4,000 miles creates 50% more than half a year's car carbon emissions.

As one of the advanced industrial economies, we have an obligation to further reduce emissions in order that newly developing nations can improve their living standards. There is very little time left to achieve this much larger target, if we are to avoid the global food shortages that will rapidly increase when a 2deg.C global temperature is exceeded. At present, 3deg.C or 4deg.C is developing as emissions continue to increase, both globally and in the UK.

As an engineer I am convinced that, with our dependency on 40% of our food imports, we must now urgently and effectively 'declare war on climate change'; by stopping consumption of all peacetime non-essential things that are not necessary for human health. We must concentrate all investment and jobs on the waste-minimising Circular Economy principles, whereby we can "create wealth from waste" instead of continually using new materials and squandering energy.

This is what happened for six years in World War II (and for several years after) when all investment and jobs were concentrated on munitions to win the war. The threats of climate change for the future of civilisation are much greater than the threat of fascism.

The task will keep us all fully employed for years.

Yours sincerely, J D DAVIS, FReNg.

Right Tree - In Right Place!

Dear Readers,

Wareham Forest Fires – The Wrong Trees In The Wrong Place

The horrendous fire in Wareham Forest, Dorset, burnt a mixture of lowland heathland and pine plantations planted by Forestry England on that same heathland. When that planting was originally instigated, the importance of heathland for wildlife (its rare birds, reptiles, invertebrates and plants) was not properly appreciated.

Now it is. Now we all understand that it is of international importance to wildlife. Government itself wants us to enlarge and link areas of heathland to improve the robustness for this wonderful habitat. One of the simplest ways to do this is to take away the pines that were planted on it and fragment it, most of which are on land owned or managed by Forestry England.

The fire was not wanted, but now it has happened large areas of former pine plantation, sadly planted on former heathland, have been removed and the land will naturally return to heathland. So, far from restocking it, what Forest England should surely be doing in the light of our present understanding, is leaving it to be heathland again. Not compounding their original mistake by planting it again. Yet we hear they are launching a public

The RED LION

Beer, Ale & Cider Specialists

Food served 12 noon - 3pm, 6pm - 9pm

High Street, Swanage. 01929 423533

appeal to fund doing just that!

Forestry England came up with a wonderful catchphrase several years ago. The Right Tree in the Right Place. Bang on. What it is failing to do is apply that to its own plantings. Pine plantations on heathland are The Wrong Tree in the Wrong Place.

Heathland is every bit as good as storing carbon as a pine plantation – arguably better. So, it is just as good, if not better, for combating climate change. And these pines on the poor soils of heathland are some of the least productive in the country, so of marginal economic benefit.

To be asking the public to fund this restocking of these pines, especially at this time, is nothing short of shocking.

Lesley Haskins. The Erica Trust. July 2020

Help Make A Difference



Dear Editor,

Under normal circumstances, many thousands of people would have by now signed up to take part in an Alzheimer's Society Memory Walk.

These hugely popular events bring people together in a variety of stunning locations to unite against dementia, whilst raising vital funds to support those affected by the condition.

It would have been my 10th year attending such an event. While it saddens me that we can't all get together this year, I'm determined with my family to walk my own way in memory of my Nana.

People with dementia have been the worst hit by the current crisis and need us more than ever – across the UK a quarter of those who have died of coronavirus had dementia.

Wherever you are, we can all still help make a difference and I encourage you to sign up either with your household – pets included – friends, or another household in line with current government guidelines. Create your own route, from lapping your garden or local park to revisiting somewhere special.

This year's Santander-sponsored Memory Walk is free to register. Walks can be organised anytime between now and October – or you might choose to do it on 20 September to mark World Alzheimer's Day.

Sign up now at memorywalk.org.uk and with every step, you'll help change the lives of people affected by dementia.

Vicky McClure, Alzheimer's Society Ambassador

SEPT 2020 EDITION DEADLINE
NOON, 7th AUGUST

EMAIL your copy to: ed@purbeckgazette.co.uk



Square & Compass

Worth Matravers

www.squareandcompasspub.co.uk

01929 439229

WE'RE OPEN - COME SEE US!

We are open from 11am every day in August.
Everything is outside in our amazing gardens,
hopefully under sunny skies!
Pints, Pies, Pasties and Sausage Rolls as usual!
NO BOOKING REQUIRED
Come up and enjoy the 'Square' atmosphere and
support your local, independent establishments!

Agreement Sought To Prohibit Sale Of Disposable Barbecues



Dorset Council is seeking agreement to look at measures prohibiting or controlling the use of disposable barbecues and other fire-related activities in the area.

In recent years, there have been a number of incidents of fire damage across Dorset as a result of disposable barbecues, bonfires close to heathland and dry wooded areas, the release of sky lanterns and other social activities.

The most serious of these incidents was the recent fire at Wareham Forest which affected 180 hectares of heathland and was declared a major incident by the Fire and Rescue Service.

Approval from Dorset Council's Cabinet will be sought for council officers to work closely with Dorset and Wiltshire Fire and Rescue Service, and other key stakeholders, to look at a range of enforcement options, and other alternatives to control or prohibit barbecues and other fire-related activities.

Councillor Ray Bryan, Portfolio Holder for Highways, Travel and Environment, said: "We were all saddened by the fire at Wareham Forest this spring. Not only was it devastating for the forest's wildlife and habitat, it risked human life and would have been horrendous for the wider environment due to the resulting smoke.

"We need a consistent approach which works across the whole area to prevent this happening again. This is a complex issue, for example we cannot risk pushing the problem to land managed by organisations which may not have the resources or enforcement powers in place to prohibit activities which present a fire risk. We need an approach that works across the area.

"The development of the options paper would enable us to understand how we can work effectively to cover all areas. We know we have wider support amongst Dorset residents to introduce new measures to help prevent further devastating fires like the recent one in Wareham, so now it's up to us to establish what we can do."

If you see a fire in the countryside, report it immediately by calling 999.

Picture, above, from Wareham Fire Station's public Facebook page.

MATT HILLAN

Building Alterations
& Maintenance

All Trade Aspects Undertaken
Free Estimates Fully Insured

01929 427296

07971 690817

Happy to help and advise

A personal book-keeping service
tailored to your needs

Phone now

01929 425660

07974 971919

Email: peter.seale@talk21.com

Peter D. Seale

ACCOUNTANCY SERVICES
BOOK-KEEPING
TAX RETURNS

PURBECK MOBILITY CENTRE
SALES · HIRE · SERVICING

FROM SCOOTERS TO SOCK PULLERS!

We have a wide range of mobility, household and care products available.
From scooters, wheelchairs and rollators to slippers, body-creams and back support cushions, we have products for everyone.

Cosyfeet

DID YOU KNOW WE SELL COSI CHAIR RISER RECLINERS?
Supremely comfortable chairs with single, dual and triple motor control
British Design and Craftsmanship at its best.
Not just for canines!
From just **£599!**

FREE HOME VISITS AVAILABLE

01929 552623
Come and meet us at St. Johns Hill, Wareham, Dorset, BH20 4NB
Disabled parking directly outside shop
Monday to Friday 9am-5pm, Saturday 9am-1pm.
www.purbeckmobility.com | shop@purbeckmobility.com

HEIRLOOMS
JEWELLERS & SILVERSMITHS

We are back open!

During this difficult time, we understand that you might still need our services but are unable to get into the store.

We can offer the following services in store and remotely:

- Jewellery and silver repairs
- Watch and clock repairs and servicing
- Watch batteries and straps
- Professional valuations
- We continue to buy jewellery, silver, gold and watches.

From 28th July, we are open:
Tuesday - Friday 9.30am - 5pm
Saturday 9.30am - 2pm

21 South Street, Wareham, BH20 4LR
01929 554207, www.heirloomsjewellery.co.uk

Community Matters

TELLING IT LIKE IT IS...

Don't Wash your Hands!

by David Hollister

Well, another month has gone by and still the evil virus prevents our publishing in print; no delivery people, and very little advertising revenue from traders who have been hit right where it hurts by enforced closure, social distancing, apparently random opening orders and total confusion amongst those authorities whose answer to everything seems to be too little too late or the offer of a £100 fine.

It's clear that until our traders have a little money rolling in, they won't be able to afford to advertise as before for now. So, we'll be online for another month until we can finance a printed edition – hard as many are desperate to advertise to encourage our readers to frequent their businesses, but they need to raise the money first. Catch 22 – for now!

Are you one of the 70,000 readers who downloaded the Purbeck Gazette last month? I hope so. Don't forget that you can find a full archive, going back years, on our website.

So, here we are again; not a lot has happened. Not a whisper from Wareham regarding the bridge footway fiasco. Maybe a new Mayor and a change of Council will bring forth not only information but also concerted action to achieve a safe footway over the road bridge, to reunite the pedestrians of North and South Wareham. Certainly, my appeal to the good folk of Wareham on their Facebook page fell on stony ground.

Why am I still banging on about this issue? Well, I know the lovely family of the lad whose dreadful experience brought about not only Radio and TV coverage but also a formal apology on behalf of the authorities. Well, actions have to be backed up by words and in this case, Councillors, your words have fallen on stony ground.

The work on Institute Road in Swanage is finished, so it seems, and now we have vans parking on the new pavements when the delivery bays are taken up by ordinary motorists – blue badges or not – who conveniently forget that these delivery drivers are doing a hateful job, against the clock, watched on CCTV in their cabs by their employers to the point where they can't have their radios on, eat their sandwiches, or pause for breath. The last thing they need is a huge delay whilst looking for a parking place from which to deliver their packages. Or residents and pedestrians being abusive. So, if you don't like it, be kind; take it out on the planners not the drivers.

And those loading bays? Someone in the Planning Office needs their head examined. After the consultation (!) last year, I commented – in this magazine and on their questionnaires – that this was the wrong way to do it. So now we have lorries parked on each side of Natwest corner making it almost impossible for motorists to spot the errant pedestrians trying to cross the road. Wait for something horrible to happen because only if it does will the County Councillors take their heads out of the sand and acknowledge that the present arrangement just ain't working.

In short. Remove the disabled bays outside the Mowlem and put three loading bays in. Make the whole north side of Station Road from Barclays Bank to Harry Ramsdens (sorry I'm a dinosaur) into a free disabled parking area. Remove the disabled parking from Mermond Place and put the parking meters there.

Have you ever watched a disabled person trying to get out of their car, or get their wheelchair out of their car, on that slope? Astonishing lack not

only of foresight, but of sheer common sense. So, the new Institute Road has resulted in people going down the back alley behind the Wimpy right down to the Square, and either parking on the yellows or even stopping for more than a minute. Disabled badge or not. Their car is illegally parked on yellow lines. Causing an obstruction. Inconsiderate.

On the subject of planning fax-pas. We are now obliged to accept the change of one-way direction in Kings Road East. Meaning that anyone – cars, vans, lorries, and artics all have to leave Swanage the same way. Up the narrow High Street, past the Town Hall, and then go down Church Hill which is OK for small cars but nothing larger, and try to emerge at the other end where the view is usually obscured by parked cars. Or continue past the Black Swan down more narrow roads where driving on the pavement is – for the HGV – the only option regardless of what we know about the cellars beneath the pavements. Past the Legion and then negotiate the turning into Court Hill. Almost blind.

Thence past Jewsons and the parked cars, to escape back out of town. Or – if aiming for North Swanage – down Court Hill and either over the dangerous railway bridge or back through the town past the station exit. Astonishing! This 'trial' should have been stamped on at the outset by Swanage Town Council who I ask – how much more of County's stupidity will you put up with before you take a stance and demand – not request but DEMAND the right to plan our town OUR WAY.

So, you drive into South Swanage down the reversed Kings Road West, except you can't go left towards the pier, you have to go up High Street past the Town Hall, etc..... The traffic from the lower High Street joins the new system by the library. Where there are new white lines indicating that you show give way to traffic emerging from KRW. Where instead of the pedestrian crossing – which worked well – we now have traffic lights.

Which are totally unnecessary because you don't need to stop; the traffic coming past Lloyds Bank has to stop (the white lines say so) but in practice doesn't because Swanage appears to be a haven for partially-sighted drivers; I nearly got taken out there this morning by an accelerating 4 x 4 whose driver made all sorts of unusual hand-gestures at me.

Finally, on August 12th we celebrate the first anniversary of the establishment of Purbeck Coast 101.2 FM, your local radio station which has – against all the odds and in the face of the detractors – still survived. Did you know that we were all – quite properly – banned from the Pier studio at 'lockdown' and at the time of writing are still not back. So, all of us – that's twenty presenters – are producing shows in our own homes and that these are being welded together and broadcast by our long-suffering program manager Michelle; again, working from her own home.

We at the Purbeck Gazette wish Purbeck Coast all the very best for the future and look forward to carrying their advertising in our pages once all is back to normal.

I am pleased to say that after passing my above comments onto some council members, I was delighted to find out that a Council meeting was held on the eve of our publication date and it looks like the 'trial' on King's Road East will now be reversed again...

Finally – the great thing about reading your Purbeck Gazette online? You don't have to wash your hands!!



JUNE FRITH
07507 933219
info@swanageflorist.co.uk
www.swanageflorist.co.uk
Swanage flowers
for every occasion
Birthdays, Weddings,
Funerals, Events



PURBECK COAST
101.2FM
 YOUR COMMUNITY RADIO STATION, BROADCASTING FROM THE COMMUNITY,
 FOR THE COMMUNITY AND BY THE COMMUNITY. LISTEN LIVE TO DAVID
 HOLLISTER ONLINE ON DRIVE TIME, WEEKDAYS, FROM 4-6PM
www.purbeckcoast.com text: 07553 236500 **01929 424424**
hello@purbeckcoast.com [Twitter Purbeckcoast](https://twitter.com/Purbeckcoast) [Facebook Purbeck Coast](https://facebook.com/PurbeckCoast)

New Mayor For Wareham!



Wareham has a new Mayor! This year's belated Annual Town Council meeting, conducted by the online 'Zoom' method due to the coronavirus pandemic, elected Councillor Lucia Kirk to the office of Mayor for the 2020/2021 municipal year. The Mayor will be accompanied at civic functions by her Escort, Councillor Doreen Cleaton. Councillor Kirk is well known in Wareham for her many efforts in support of local charities and for her staunch support and longstanding membership of the Wareham in Bloom Committee.

On appointment, she said, "I have lived in Wareham for the past fifty years and I have greatly enjoyed being part of

the local community. In the past, I worked for many years in Alderney hospital as a care worker, looked after many individuals with dementia and worked locally in Purbeck Lodge, supporting adults with learning disabilities. I have done lots of voluntary work for various charities over the years, enjoying my time as an advocate for individuals with learning disabilities, which was very rewarding.

"My chosen charity for this coming year is Wareham Youth Club, which I have a real passion for. Wareham is a wonderful town and I am extremely honoured to be chosen as Mayor for this year. I will serve the town of Wareham to the best of my ability and I'm so looking forward to fulfilling my role."

ASHLEY BLINDS

curtains • shutters • awnings

perfectly made to measure

GET READY FOR SUMMER

FREE home appointments, expert survey and fitting
www.AshleyBlindsUK.com 01929 498028

JAMES SMITH FUNERAL DIRECTORS

SERVICE

Broad shoulders. So you don't have to carry the weight alone.

TEL. 01929 422 445
OFFICE@JAMESSMITHFUNERALS.CO.UK
JAMESSMITHFUNERALS.CO.UK



LOCAL BUSINESS ACHIEVES NATIONAL RECOGNITION



Steve Wheller receiving the award on behalf of Carpets Select

Carpets Select is a local company which employs skilled, local labour, and is a member of the Guild of Master Craftsmen.

Membership was granted by the Guilds' Council of Management in recognition of both the company's commitment to working with skill and integrity and its agreement to abide by the Guild's publicly declared aims and objectives.

Carpets Select Director, Steve Wheller, says 'We are honoured to have received such high recognition from the Guild. We strive hard to deliver a personal, quality

service and all at Carpets Select pride themselves on their workmanship.' He went on to say 'It goes to show, that in these days of impersonal superstores, you can't beat personal, friendly, high quality service and workmanship from people who really care about their work.'

With their home selection service, Carpets Select can make choosing your floor covering a stress free experience. So, if you're in need of carpet, vinyl or laminate flooring, call Steve or John at Carpets Select 01929 460005 or email carpetsselect@tiscali.co.uk and they will be happy to help you.

CARPETS SELECT



- **SIT BACK**, relax, put your feet up and choose a carpet, vinyl or laminate flooring away from the crush of the high street ... You can with Carpets Select ... the carpet store that comes to your door!
- With over 45 years combined experience Steve Wheller and John Cropp are sure to meet all your flooring needs.
- As members of the Guild of Master Craftsmen Carpets Select pride themselves as being able to provide both quality workmanship and outstanding service, as well as extremely competitive prices.
- Call Steve or John the Master Craftsmen of the carpet world.

ALL MAJOR CREDIT CARDS ACCEPTED

01929 460005





THANK YOU, NHS!

On behalf of our readers, we would like to thank ALL those working for the NHS, whether cleaning staff or senior surgeon. You are ALL instrumental to the nation as a whole and we support you.

A particular thank you to our local hospitals, our GP practices, our District Nurse teams, our Ambulance services and our First Responders. YOU are our heroes.



Where has this year gone? The months seemed to have merged and here we are, already in August. As we are all aware the lockdown restrictions are now greatly relaxed and people are taking advantage of familiar freedoms. Despite this we would still urge you to follow the government's guidelines in order to Stay Safe:

Stay alert > Control the Virus > Save Lives

We can all help control the virus if we all stay alert. This means you must:

- stay at home as much as possible
- work from home if you can
- limit contact with other people
- keep your distance from people not in your household (2 metres apart where possible)
- wash your hands regularly
- Do not leave home if you or anyone in your household has symptoms.

A fuller list is set out in the regulations. Even when doing these activities, you should be minimising time spent away from the home and ensuring that you are two metres apart from anyone outside of your household.

You can find out more visit <https://www.gov.uk/coronavirus> Information can also be found at <https://www.dorset.police.uk/covid-19-coronavirus/>

We ask you all to continue to keep yourselves updated by visiting the websites shown above and observe Government guidelines and stay safe.

So, what else have we been up to? Well, we have been very busy;

the period 12 June – 08 July 2020 we dealt with a total of 558 occurrences in Purbeck, of which 166 were recorded crimes resulting in 43 arrests. There were 74 occurrences of Road Traffic collisions. With the relaxation of the lockdown there is a noticeable increase in traffic and people about, and given the time of year a lot of this traffic will be tourists, so please be patient and respectful on the roads.

If this wasn't enough, we were all heavily involved with patrols and enforcement of Covid19 lockdown measures. Advising, educating, and enforcing if necessary, with fixed penalty notices the current Covid-19 legislation. Fixed penalty notices were issued in Lulworth and Studland for inconsiderate and dangerous parking. Officers from Purbeck South where busy moving on campers and putting out BBQs and fires on Studland beaches and heathland, whilst our colleagues from North Purbeck were dealing with similar issues at Lulworth and Durdle Door.

Finally, if you need to contact Dorset Police please call our Police Enquiry Centre by calling 101. Always call 999 in an EMERGENCY when there is a risk of HARM or a CRIME in progress. Alternatively, call the free CRIMESTOPPERS line on 0800 555 111.

You can also use our website to report a number of issues, from full crime reports to lost property; just use the following link <https://www.dorset.police.uk/do-it-online/>

Don't forget to visit us on our Facebook page Facebook.com/Purbeck-police and Twitter - @PurbeckPolice – we really value your support and comments. You can also see our latest priorities and up and coming events at <https://www.dorset.police.uk/neighbourhood-policing/purbeck/>

Why not register on Dorset Alert, by registering for the free Dorset Police community messaging alerts you will receive information on, Local crime and incidents where we believe that sharing information with you will help to prevent further offences occurring, Crimes and incidents where you may be able to help by providing vital information, Current crime trends, Crime prevention advice and Safer Neighbourhood activity and opportunities to meet the team. You can also receive news from our partner agencies such as Dorset Fire and Rescue Service or Trading Standards and Community safety messages. *Purbeck Neighbourhood Policing Team*

Transforming Planning

In April 2019 Dorset Council became a unitary authority. This reorganisation combined district, borough and county councils. All six organisations had their own versions of planning management software from two different suppliers.

The planning system needs to provide a modern service to enable Dorset to grow economically. Backlogs of planning applications and validations also needed to be addressed.

The challenge was to combine policies, people, users, processes and software into a one team system capable of delivering excellent customer service while supporting the growth and regeneration of the county.

Working with employees, councillors, architects, surveyors and planning agents a three-step approach was developed to transform the service:

1. Deal with the current backlog
2. Implement a single system
3. Improve communication

Dealing with the backlog

An agency has been employed to concentrate on clearing the back log. They have made good progress clearing the validation backlog which was affecting the former West Dorset and Weymouth areas.

They will now clear the validation backlog affecting former Purbeck and East Dorset areas. Their progress will be monitored.

A review to improve validation criteria and to ensure that they are consistently applied.

A plan is being created to use technology to help prevent a return of the backlog.

A single system

A new system will be in place mid-September. There will be phases of implementation for the different areas with a complete system by March 2021.

All core planning, land charges and building control will use the same system, database and mapping data.

Improve communication.

Work is continuing to improve communications. A clearer website, use of chatbots and automatic checking will help to achieve this. Consistency across all the work is essential.

Cllr David Walsh, Dorset Council's Portfolio Holder for Planning, said: "It is incredibly important to make sure all aspects of our planning process run as smoothly and efficiently as it can. It's been a challenge to combine six different organisations processes and capabilities. The team is working very hard to ensure we have a modern, consistent customer-focused service."

To find out more about planning visit www.dorsetcouncil.gov.uk/planning

We need you now more than ever

Help us by playing the Local Hospice Lottery



WEEKLY PRIZE FUND
£4,600

Plus TWO
£10,000
SUPER DRAWS
EVERY YEAR!

ROLLOVER prize up to
£25,000!

IT'S EASY, FUN AND JUST
£1 PER WEEK

Visit **lewis-manning.co.uk/lottery** to sign up today!

BeGambleAware.org

All players must be aged 18 or over
Play the local hospice lottery responsibly

This message was kindly funded by a Lewis-Manning Hospice Care supporter.



Lewis-Manning Hospice Care
local hospice lottery

Local Hospice Lottery Ltd is a wholly owned subsidiary of Farleigh Hospice (Registered Charity No. 284570). Local Hospice Lottery Ltd is licensed by the Gambling Commission (www.gamblingcommission.gov.uk) and is a member of the Hospice Lotteries Association and the Lotteries Council through whom Local Hospice Lottery makes a contribution to GambleAware (the leading charity in the UK committed to reducing gambling-related harms). For more information and advice visit www.begambleaware.org.

Lewis-Manning Hospice Care is a Registered Charity. No. 1120193. For each £1 entry in the weekly draw Local Hospice Lottery gives an average of 60p to hospice care. Lewis Manning Hospice is one of a number of hospices throughout Great Britain supported by Local Hospice Lottery. Local Hospice Lottery will give between 55% and 80% of profits from individuals playing in support of Lewis Manning Hospice Care to Lewis Manning Hospice Care. This is expected to be at least £550,000 over five years from September 2018. A full list of the charities supported, along with full terms and conditions, information on self-exclusion and how to play, can be seen on the Local Hospice Lottery website or upon request from Freepost Local Hospice Lottery.

Purbeck Coast Celebrates First Birthday!

On Wednesday August 12th, Purbeck's local radio station is celebrating one year of broadcasting on 101.2FM and online at www.purbeckcoast.com

Until the middle of March, we were able to broadcast from the superbly equipped studios on the Pier, but 'lockdown' meant that this would no longer be possible.

So, over the last few weeks, our presenters have learned to prepare their shows from home and send them to Michelle, our producer, online. We now have over twenty volunteer contributors keeping our live schedules going, with news, current affairs, and varied music to suit most tastes.

We would like to thank the Swanage Pier Trust and their manager, Ben Adeney, for providing the studio premises and we look forward to being back there before the autumn. We would like also to thank our volunteers, our contributors, our guests, and all those who have played their part in making Purbeck Coast 101.2FM a continuing success.

We are presenting a whole week of birthday shows starting on Monday 10th August, so tune in to get the most from the coast!

TALK TO US

any time you like, in your own way,
about whatever's getting to you

CALL: 116 123 (FREE)

EMAIL: jo@samaritans.org

WEB: samaritans.org

VISIT US: find your
nearest branch on
our website



A registered charity

PURBECK

COAST

101.2FM



YOUR LOCAL COMMUNITY RADIO STATION

Purbeck's local radio station brings you 24 hour music, news and local information. Tune in to get the most from the coast!



We are celebrating our 1st Birthday!

www.purbeckcoast.com

01929 424 424 Text us: 07553 236 500

hello@purbeckcoast.com

Purbeckcoast Purbeck Coast



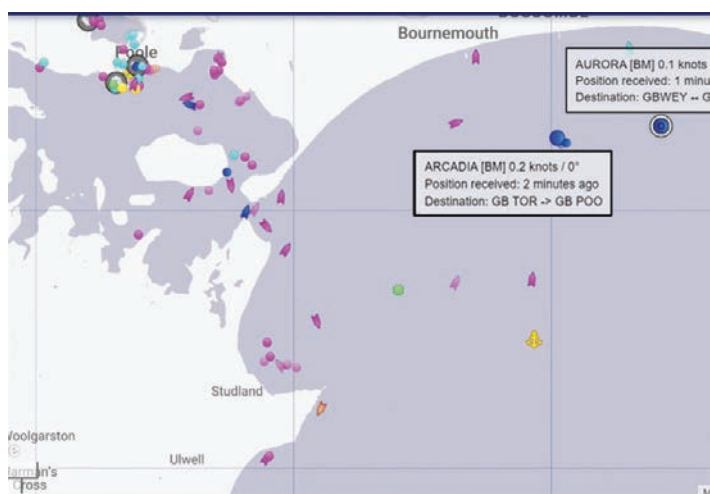
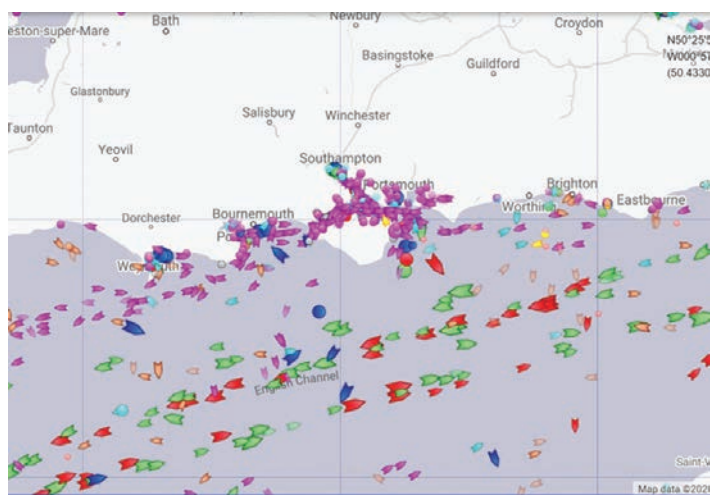
National Coastwatch

Eyes along the coast

View from the Lookout

We're now into the second month of re-opening and we're all getting used to the new way of working. Morning watches start a little bit earlier to get the necessary cleaning done and evening watches finish a little bit later for the same reason. Watch handovers are done al fresco and those of us who are "tech savvy" have reminders on our phone to ring the watchkeeper on the hour, to check they are OK. Finding where I've left my phone is more of a problem for me, so my reminder is a note stuck above my desk! It has to be said but it's a real pleasure to be back on watch again!

After opening the watch, one of the first things I like to do is to check to see which cruise liners are moored up off Bournemouth. They've certainly provided a talking point over the last couple of months. We can do this using the vessel's AIS (automatic identification system). All large vessels over 300 tonnes and fishing vessels over 15m are required to have an AIS system fitted to enable them to be tracked. As well as using our radar to view a vessel's details, we use a very useful app called "Marine Traffic" to help us with our identification. It's always quite fascinating to zoom out the English Channel level to see how many vessels are moving up and down our coasts



Our gardening team have been hard at work and "Haul Aboard", our flower boat (pictured, right), has emerged from the yellow sea of wild mustard. Plans are well underway to reinvigorate the flowerbeds and so we shall soon be looking our best. All we need now is to be able to welcome visitors to the Lookout, but I fear this may be some way off.

The friendly wave from the footpath or the benches around the point are greatly appreciated as are the chats from the balcony. Our collecting tins are out again and we're incredibly grateful for the donations that people

have been making. As a charity we rely completely on donations to meet our running costs. Not being able to run our popular "tea and cakes" days or attend the various summer events has meant that, like a lot of charities and businesses, our income has fallen drastically. Any donation, however small, will help us carry on our work.

Even though the last week has been unseasonably windy, the fine weather has brought people out onto the water again and our log sheets are gradually getting longer. It's great to see our regulars setting out across the bay either for a day's fishing, sailing and now diving. The word about our dedicated radio channel, channel 65, is getting out and it's encouraging to find an increasing number of skippers giving us a call for a radio check or passing on their passage details.

Whilst it is really useful to know where you are going, it's even more useful to know what time you're coming back. Phone calls from the Maritime and Coastguard Agency asking about vessels normally occur when they're overdue. It's good that the local gig rowing club, dive club and sailing club show a good example by radioing to the lookout when they go out and when they return ashore.

As well as logging names of vessels we also list the type of vessel or craft. As the sport has taken off, SUP or stand up paddle board is becoming increasingly common in the logbook. Modern paddle boarding traces its history back to Hawaii in the 1940s.

It's said that John Ah Choy, a local Hawaiian surfer, developed the technique but as he got older and was unable to get up and down from his board. He would stand on his board and paddle out with a canoe paddle to catch the waves. Over the years the sport has moved away from surfing and has diversified from into racing, touring, yoga, and fishing.

The design of the modern recreational board differs from traditional surfing style in that it includes a displacement hull. This allows the board to glide and track similar to a canoe or kayak. However, the way the board is propelled means that the craft cannot be propelled as effectively as a kayak. It also means that the paddler is less stable.

The advent of the inflatable board has meant that the sport has become much more accessible. It's so easy to transport the board, in a big rucksack, to the sea, inflate it and paddle off. Sadly, this ease means that many people underestimate the skill and strength needed to propel the board in anything but calm water.

There have been several recent incidents where paddleboarders have had to be rescued by the RNLI as they have not been able to get back to shore when conditions change.

Incidents like these, and others that have occurred recently, highlight the need to take a number of simple precautions before going afloat. Always check the weather and tides and, if you are unfamiliar with the area, ask for local advice about conditions and hazards. Always let someone know where you are going, when you will be back and have some way of communicating if there is an emergency.

This is Swanage NCI, listening on channel 65, out.



Independent Panel Supports Use of Lockdown Notices

An independent panel created to scrutinise Dorset Police has written to the Chief Constable to support the way officers issued fixed penalty notices during the coronavirus lockdown.

The Out of Court Disposals Scrutiny Panel, set up by the Dorset Office of the Police and Crime Commissioner, examined a randomly selected sample of anonymised notices issued by the Force in April and early May.

The panel, made up of members of the public, meets regularly to examine how officers use their powers to issue a range of notices that do not require court hearings. Their virtual meeting on June 17th focused on fixed penalty notices handed out to people caught breaking lockdown restrictions.

Panel chair William Gibbons has written to Chief Constable James Vaughan to say the panel agreed that in all cases the fixed penalty notices were issued appropriately.

The letter states: "The panel wish to commend and congratulate Dorset Police and their officers for the firm, fair and tactful way they dealt with the cases.

"In all cases the panel were encouraged to note that officers sought to engage, explain and educate, before taking enforcement action. The panel recognises the challenges which continue to be faced by officers in their interactions with the public in these uncertain times."

Dorset Police issued 860 fixed penalty notices since the start of the lockdown period. The majority of these were given to people who had breached regulations during the early lockdown period – when there was still a ban on going outside other than in very limited circumstances – by travelling to the county's beauty spots from other parts of the country.

The OPCC previously examined a separate randomly selected sample of cases in which fixed penalty notices were issued during the lockdown and fed back that they were reassured by the quality of officers' decision making. This took place more quickly than the usual round of panels in order to scrutinise the police's work as a matter of urgency.

A survey conducted by the OPCC in May found that the vast majority of Dorset residents who responded supported the Force's approach to dealing with the lockdown and thought their public messages had been clear. Dorset Police and Crime Commissioner Martyn Underhill said: "The Covid-19 lockdown period has been an extraordinary time for policing in the UK, and this crisis has made work of independent scrutinising the police become even more important than usual.

"It was essential we examined how fixed penalty notices had been issued during lockdown and it's very reassuring that this independent group has been so satisfied with what they've seen they were moved to write to the chief constable to commend his officers."

Assistant Chief Constable Sam de Reya said: "Dorset Police welcome scrutiny of our policy's, process and service delivery to support how we police our communities

"Throughout the Covid-19 lockdown officers have always sought to educate and engage with members of the public; enforcement has been a last resort. Policing has been challenging at times during the pandemic, but the vast majority of the public have taken advice and adhered to guidance and legislation. In the minority of cases where enforcement has been required, this has been reasonable and proportionate to the circumstances and only when absolutely necessary."

PURBECK GOOD NEIGHBOURS

Purbeck Good Neighbours is a volunteer group who can help older people over 50 with small or difficult one-off tasks in their home.

WE ARE HERE TO HELP YOU! WHY CALL US!

For Example

Read a letter, Reach a high cupboard,
Change a light bulb, Move some furniture,
Take some rubbish away, Change some batteries

HELPLINE - 01929 424 363

All we ask of you is you give the volunteer a minimum donation of £2 to cover expenses

THE SWANAGE BOOKSHOP

35 Station Road, Swanage. 01929 424088.

We are now open again!

*Maps of the area, walking books
and a range of local books*

Lots of new stock books in-store!

**See what we have before shopping
out-of-town or online!**

**SUPPORT YOUR LOCAL SHOPS OR
FACE LOSING THEM!**

THE SWANAGE BOOKSHOP

35 STATION ROAD

01929 424088



Open 9.30am - 5pm. www.editionone.co.uk

Credit/Debit cards and cheques accepted



Volunteer Centre

Dorset

01305 269214

**Volunteer Centre Dorset has an exciting volunteering opportunity
with ourselves that we would like to tell you about.**

One of our initiatives is the Community Credits Scheme which supports people with learning disabilities into volunteering. This was put on pause when lockdown was announced back in March. With the easing of restrictions we are looking for 'volunteer buddies' to support people with learning disabilities back into volunteering, building their confidence in the new 'normal' we find ourselves in.

The role of the 'buddy' will vary by the needs of the individual, but it can include going with the individual to places of interest/activities, accompanying them whilst shopping and to potentially support them as they undertake their volunteering role. The most important thing is to offer friendship and a listening ear.

This role requires an enhanced DBS check, which we can support you in applying for if the role is of interest. You will also be required to observe Government and NHS guidelines at all times.

If you have some time to spare and can help these individuals recognise that they are a much-valued part of our community, we would be pleased to hear from you. Please contact Siobhan on 07918 639014 for an informal chat: s.davis@volunteeringdorset.org.uk

Full training and support will be provided and expenses met.

Thank you again for all your support during this difficult time.

SELF STORAGE UNITS

From 15ft x 6ft up to 15ft x 15ft
For furniture, classic cars, documents
Insured & Alarmed
At East Stoke, Wareham
Call 07836 369969

@29 re-cycle

29 Commercial Road, Swanage. BH19 1DF

We throw HUGE amounts of electrical items away every year.

At @29 re-cycle, we aim to STOP some of this waste!

We test and clean every electrical item and guarantee them for three months, and sell them at roughly 25% of the original price.

Proceeds donated to:

THE LIKULEZI PROJECT (registered charity 12838)

Email: info@africaaware.net www.africaaware.net

Please contact the charity directly for further information,
or ask us for a leaflet explaining their work

OPEN MONDAY - FRIDAY. 10am - 5pm.

ALWAYS WANTED: Smaller pieces of furniture, household & electrical items.
Drop in to shop, or ring/text Jane on 07795 193090 for collections.

Wareham Town Council Update

Julie, our Gazette correspondent, details the goings on in recent council meetings.....

News from Wareham Town Council



Through the wonders of Zoom, ably hosted by the Town Clerk, Wareham Town Council held its Annual Meeting. Councillor Lucia Kirk was elected Mayor and she named Purbeck Youth and Community Foundation as her charity.

Councillor Keith Green will be Deputy Mayor. Councillor Goodinge was praised for her hard work as Mayor 2019/2020. She said, it had been an honour as well as enjoyable and she had raised £3,000 for charity though she was disappointed to have missed the opening ceremony of the allotments' eco-toilet.

A suggestion by Mrs N Wiggins that part of South Street be pedestrianised in order to facilitate social distancing, in particular if eating establishments were to have tables outside, had gone to Dorset Council (DC). DC had responded with an alternative suggestion of widening the pavements. Councillors would gather the views of the businesses affected. Due to the pandemic, no progress had been made with regard to the level pedestrian crossing of the railway.

Like last year, the composition of the Policy, Resources and Finance Committee caused debate. Councillor Goodinge proposed that membership be increased by 1 to 10 so that the Conservative Group could have 2 members. It was averred that this would be more democratic representation and the Committee would profit from the experience of

those Councillors. The amendment was defeated.

DC staff have been working with volunteers to cope with the lockdown. People will be moving into Red Oak Court, the temporary housing on the former Middle School site, from July.

A letter from Wareham Town Council to the Post Office Area Manager will underline the importance of keeping a Sandford post office, currently situated in McColls which may close.

To sign the petition, try looking for Save Sandford McColls on Facebook. Councillor Russell pointed out that McColls is also a useful collecting point for parcels. Councillor Ezzard praised the work of Purbeck Citizens Advice which has continued through lockdown with many people working from home.

It was agreed that the Council's Delegated Decisions be displayed on notice boards as well as on the website where the latest ones appear in the Council Meeting agenda. There you can find, for example, the Council's response to the Local Plan as submitted to DC.

The next meeting of the Town Council will be on Tuesday 11th August at 7pm probably by Zoom. The agenda will be published on the website, www.wareham-tc.gov.uk, under "Council" and the Zoom link is within the agenda, for anyone who wishes to observe.

Questions or comments to the Council must be submitted beforehand.

The William Frampton Educational Trust

"Frampton's Charity"

This is a local charity aiming to help young people, from leaving school up to the age of 25. It was set up by William Frampton in the 1600s and originally helped those on his estate with the costs of education.

Now, Frampton's Charity provides funding for young people with education or training needs – applicants must be resident in the parishes of Moreton, Affpuddle, Briantspuddle and Turnerspudde. Funding can help with training equipment, books, travel expenses or general maintenance. Awards of up to £500 are usually made. In recent years awards have been made for those leaving agricultural college in need of funds to purchase equipment, travel costs for training and work experience in other parts of Dorset and help with travel costs to university.

It is the applicant's circumstances that are relevant and considered by the

trustees. The charity is very aware that young people leaving school and college are facing difficult decisions about moving to higher education, apprenticeship and trial work periods and the risk of setting up a small business. It is now open to applications which should be received by 31st August.

Chair of trustees Richard Frampton-Hobbs says "In early March we planned activities this the summer to raise our profile locally – in particular an event at Moreton Village Hall in July with food, drink and a country dance band.

Unfortunately, we have had to postpone that, but we expect more applications this year than in the past for help. Coronavirus has impacted for the worse on the lives of many young people."

Check out the Facebook page for the William Frampton Educational Foundation or email wfefttrust@outlook.com to apply.



WPM Residential Lettings

If you need to Let or want to Rent, contact WPM.
We offer a personal service to Landlords & Tenants

15c Commercial Road, Swanage. 01929 426200

Web: www.wpmlettings.co.uk Email: wpmlettings@gmail.com

Brian & Penny
Armstrong

Decorators

Insured & guaranteed

01929 552483

07743019590



Surprise 'N' Store



Announcing that we are now the official Isle of Purbeck stockist of 'hotter' shoes

**Exceptional shoes, made here in the U.K.
A full and half-size range available.**

**Open 9.30am – 5.30pm - 12/13 The Square, Swanage,
BH19 2LJ 01929 424791 www.surprisenstore.co.uk**



Charlie On Duty With Wareham Lions



Charlie (aka Choo - pictured) is Wareham Lions PRO Lion Paul Cady's grandson and he's been helping out with his family's initiative of raising funds for the Wareham Lions' Ambulance and the NHS.

Manning a roadside stall, the family are selling plants and to keep social distance are taking the money at an 'honesty box' up the road.

"People are obviously donating their loose change, but we are also getting notes, and someone even left some Love Heart sweets in the tray," says Lion Paul. "We are also promoting 'Message in a Bottle' and have a bucket for collecting old specs."

**SEPTEMBER 2020 EDITION
DEADLINE**

NOON, FRI 7TH AUGUST

You can get everything you want with your new carpet..

**Great Offer
80/20
Wool Carpet
From
£18.99
Sq mtr**

**FREE
Estimates**

**Honest
Advice**



Selected ranges, see in-store for details

WE'LL B£AT ANY PRICE
Purbeck Furnishing

Tel: 01929 422703

61 Kings Road West, Swanage, BH19 1HQ

Prefer to shop at home? If you have problems getting to us, we will come to you...Call us to arrange a FREE home visit!

Need Help? We will arrange to move furniture, take up your old flooring and remove all the rubbish. Just ask for details.

Carpets : Vinyls : Karndean: Beds: Curtains: Recliners



TALK TO US

any time you like, in your own way,
about whatever's getting to you

CALL: 116 123 (FREE)
EMAIL: jo@samaritans.org
WEB: samaritans.org

VISIT US: find your
nearest branch on
our website



A registered charity

INTERIOR AND EXTERIOR PAINTER AND DECORATOR

- All aspects of painting & decorating undertaken
- Domestic, new build & commercial
- Qualified with 30 years experience



- First class finish
- FREE written quotation
- Fully insured - NO VAT
- No job too big or small



CALL GAVIN ON:

07977 047314 OR 01929 471704

Email: g.lewis515@btinternet.com

Dorset Libraries Now Offering Order & Collect Service



timeslots mean the number of people visiting at any one time can be managed. All books will be quarantined in line with national guidance.

People are now able to return books and other items currently on loan via library letterboxes.

All current loans that would have been due back during the lockdown period have been extended to the end of August. Any overdue charges that customers might have incurred as a result of library closures due to COVID-19 have been waived.

Later in July, further services will be available at nine Dorset libraries, in the north, east, south and west of the county. These are: Blandford, Bridport, Dorchester, Ferndown, Gillingham, Sherborne, Wareham, Weymouth and Wimborne. Initially, opening hours will be reduced and a limited number of visitors will be allowed in the buildings at any one time.

There will be the opportunity for people to browse the books and reserve use of the public access computers. More information will be made available on: www.dorsetcouncil.gov.uk/libraries

Activities and events, such as rhyme time and reading groups, which have been highly popular online during lockdown, will continue to be internet-based for the time being. The increased number of e-books and publications, including newspapers and magazines, will also continue to be available online.

Libraries managed by Dorset Council started a phased re-opening in the second week of July.

The initial re-opening plans, focussed on the safety of customers and library employees, provided existing users with an order and collect service. People will be able to order their preferred categories of books and other items to collect at an allocated time from twenty-two of Dorset's twenty-three libraries (not Beaminster).

Books were available to order online at www.dorsetcouncil.gov.uk/libraries from 8 July by simply completing a short form about reading preferences. For those without online access, an order can be made by phoning 01305 228400.

The service is available for all ages – for adults, young people and children. There will be a bag of up to ten books and other items such as talking books or DVDs waiting for collection. These will be based on the type of books people normally select for themselves such as Romance. The items can be borrowed for up to four weeks.

The collections and returns process will be contactless and pre-arranged

Councillor Tony Alford, Customer, Community and Regulatory Services portfolio holder said: "During lockdown, our library teams worked hard to minimise the disruption to customers by offering a range of fun and informative services via the internet.

"We saw a tremendous increase in new online subscribers during lockdown. However, I know many people missed the human interaction a visit to the library can give. Although libraries are going to look and feel very different as they re-open with limited services on offer, I am sure customers will be pleased to physically access their local library again and have a much-needed refresh of their reading material.

"The library teams are excited about returning to some normality too, although things will obviously be very different for a while!"

Plans to extend the services of Dorset's remaining fourteen council-managed will be developed based on the learning and experience of opening the initial nine libraries, putting the health and safety of customers and employees first at all times. The council is also liaising with the eight independent community managed libraries about their plans for re-opening.

Curtains by Clare

Have your curtains
made for you
at very reasonable rates

Also curtain repairs
and alterations

Phone 01929 550714
mobile 07969 695338

WAREHAM COBBLERS

Shoe Repairs
Key Cutting

Leather Goods
Engraving

7 North Street, Wareham
01929 553355

Arkwrights of Swanage now agents



YOUR COMMUNITY RADIO STATION, BROADCASTING FROM THE COMMUNITY,
FOR THE COMMUNITY AND BY THE COMMUNITY. LISTEN LIVE TO DAVID
HOLLISTER ONLINE ON DRIVE TIME, WEEKDAYS, FROM 4-6PM

www.purbeckcoast.com text: 07553 236500 01929 424424

hello@purbeckcoast.com [Purbeckcoast](https://www.facebook.com/Purbeckcoast) [Purbeck Coast](https://www.facebook.com/PurbeckCoast)

SWANAGE RAILWAY

STEAM TRAINS RESUMED. NORDEN STATION TO RE-OPEN WITH CORFE CASTLE, HARMAN'S CROSS & HERSTON STATIONS CLOSED

Steam trains resumed on the award-winning Swanage Railway for the first time since mid-March – with Norden station re-opening to the public while Corfe Castle, Harman's Cross and Herston stations remain closed.

The move came as the Swanage Railway, in Dorset's Isle of Purbeck, continues its 'Save Our Service' (S.O.S.) Appeal to raise £360,000 to help the popular heritage line – which has been rebuilt from nothing since 1976 – survive in the wake of the economic effects of Coronavirus.

Steam trains began operating a non-stop service between Swanage and Norden stations from Saturday, 18 July, 2020, with the trains not stopping at Corfe Castle, Harman's Cross and Herston Halt.

Monday, 20 July, 2020, saw Norden station re-open to the public for passengers starting their journey from Norden station which is located next to Dorset Council's Purbeck Park car park off the A351 Wareham to Corfe Castle road.

The steam locomotive hauling the trains is the 1920s-built Southern Railway U class No. 31806 which used to haul trains to Corfe Castle and Swanage during the 1950s.

The resumption of steam trains and the opening of Norden station will see the health of passengers and railway staff still protected with socially distanced queuing at Swanage and Norden stations, socially distanced assigned seating on trains and the wearing of face coverings.

The non-stop train service departs Swanage station at 10.30am, 12.00 noon, 1.30pm and 3pm for the return trip to Norden.

While a socially distanced Swanage station shop is open, subject to volunteer availability, when trains are running, the catering outlets at Swanage and Norden stations remain closed.

Passengers are being encouraged to book in advance for the trains via the Swanage Railway's website at www.swanagerailway.co.uk.

Swanage Railway chairman Gavin Johns said: "I am delighted to see the return of steam locomotives on our trains and the re-opening of Norden station so that visitors can book a day out at the seaside confident in the knowledge that they will be safe.

"We are gaining confidence in operating and helping our customers to remain safe, so we are bringing back steam locomotives to haul our trains and re-opening Norden station for the first time since mid-March 2020.

"Everyone intending to travel must have a ticket and seat reservation to ensure social distancing can be maintained. Customers are expected to have face coverings unless there are health grounds not to do so. Full details can be found on our website.

"We are pleased with the progress we are making with re-starting train services after the enforced closure due to the Covid-19 lockdown. Our risk assessment has proven its worth, ensuring that customers and staff can confidently travel with us to enjoy the Swanage Railway and the

Save Our Service!



magnificent Purbeck countryside.

"We are continuing to look at the practicality of re-opening Corfe Castle station and hope to be able to make announcements concerning this station in due course," added Mr Johns who is a volunteer signalman on the Swanage Railway.

As of Tuesday, 14 July, the Swanage Railway's 'Save Our Service' (S.O.S.) Appeal had raised £238,937 towards the target of £360,000.

Gavin Johns explained: "The Swanage Railway still has considerable work to do to ensure that the impact that the Coronavirus lockdown has had on our finances can be managed to ensure survival to 2021.

"The summer train service – first hauled by heritage diesel locomotives and now steam – is but one part of our survival plan. Continuing to raise awareness and funds through our 'Save Our Service' (S.O.S.) Appeal campaign, we are very grateful and humbled by the support that we are receiving from the public," he added.

The Swanage Railway last ran its public steam train service on the weekend of 14 and 15 March, 2020. To make a 'Save Our Service' donation by PayPal, a Fast Payment through Internet banking or by a cheque in the post, visit www.saveourservice.co.uk while donations can also be made via the Swanage Railway's Facebook page.

Pictured, below: The first train 31806 to depart Swanage on Saturday 18th July 2020. By Andrew P.M. Wright.



Blast From The Past!

This month, A Decade Ago...

On 1st June 2010, we'd launched our new website, publishing the entire Gazette online each month on book format. The August 2010 editions saw us astonished by the amount of people reading the magazine online all over the world.

Our decision to not offer any 'pop-up' advertising online worked a treat and we were inundated with messages from online readers thanking us for making the online reading experience a nice one - uninterrupted by annoying advertising and continual pop-up screens trying to distract you from what you'd actually gone online to read.

Today, having published the Gazette online only during the covid-19 pandemic lockdown, our online readership has continued to grow from month-to-month. We've averaged around 70,000 readers per month since March 2020, with many online followers actually downloading the entire publication to their devices, which is amazing.

In August 2010 we reported that the then-government's Secretary of State's proposal that 2,750 new homes be built on green belt land around Lytchett Minster near Poole was quashed. Purbeck District Council had opposed the plans and supported residents in the fight against the planned development.

The council stated that they were consulting with residents with regards to affordable housing need in the area and was gathering feedback through questionnaires and consultation events. This was undertaken as a part of the council's work in producing the Core Strategy - the new plan to manage growth and development to the year 2026.

Following up from previous correspondence, readers Jan and Rob Owen of Swanage wrote in with regards to the 'Swanage hum'. They responded to reader, David Evans, and stated that the 'hum' had unquestionably got louder and was continuous day and night. Jan and Rob said that they had been in contact with numerous people who all agreed that not only was the 'hum' still in existence, it was louder than before. Having attended a meeting in 2009 on the subject, Jan and Rob questioned what the outcome of the meeting was and mentioned that to their knowledge, local authorities did not have equipment capable of detecting low frequency noise (50-60 hertz). Jan and Rob's research had identified people who were aware of the 'hum' not only in the BH postcode, but also further afield in Bristol, Largs, Copenhagen, Vancouver, Taos, Kokomo and more.... What was the final answer? Was there ever one? Some things I guess we'll never really know....

The August 2010 edition saw those who had worked tirelessly to fund and build a new village hall for Harmans Cross finally 'receive' the keys to their new, completed building. The old hall had been demolished in February 2010 and due to delays caused by bad weather, the hand-over was around seven weeks behind schedule.



The new village hall had been built to stringent environmental standards and ground and air source heat pumps, a rainwater harvesting system and an impressive array of electronics and audio-visual equipment were included in the final build.

A few bits and pieces were still due to be completed at the time of the key hand-over, such as minor works in the kitchen, the bar and so on, but the hall management team were delighted with the completed build and were excited to begin offering a wide array of services to the local villagers.

In July 2010, we'd published a letter with regards to the bollards appearing throughout Swanage in an attempt to stop motorists from mounting the pavements and parking where they liked ('Bollarditis').

In late July, we were called to an early meeting in Institute Road, Swanage,



where a couple of local 'street artists' were busy erecting brand new concrete bollards down the road to support the council's desire for bollards just about everywhere....



These artistic, concrete bollards were mooted as an alternative to the council's preferred standard, black bollards. As they were being installed in the early hours as daylight was breaking, one local builder who was driving past on his way to work slowed down to enquire where he could purchase such an item for his gran....

A local nurse also stopped and guessed the nature of the bollards whilst they were still under wraps - attention to detail and a thorough knowledge of anatomy indeed - God bless the NHS!




WOOD | MULTIFUEL | GAS | ELECTRIC

13D Riverside Park Wimborne
Dorset BH21 1QU

01202 888561

www.firebydesign.co.uk

Shoplifting In Wareham CCTV Appeal

Officers investigating a shoplifting at a store in Wareham are issuing CCTV images of the suspect.

At around 8.50pm on Wednesday 24 June 2020 a man entered the Co-op store in North Street and made off without paying for £170-worth of items.

Sergeant Carmel Ryan, of Dorset Police, said: "We are continuing to investigate this theft and are now in a position to release CCTV images of the suspect."

"I would urge anyone with information as to his identity to please contact us."

Anyone with information is asked to contact Dorset Police at www.dorset.police.uk, via email 101@dorset.pnn.police.uk or by calling 101, quoting occurrence number 55200091261.

Alternatively, to stay 100 per cent anonymous, contact the independent charity Crimestoppers online at Crimestoppers-uk.org or call freephone 0800 555 111.



Sherborne

The Home Of Relaxation

Sherborne is one of the country's leading Upholstery Manufacturers. Exuding Comfort, Class & Convenience, all Sherborne products are manufactured entirely in the UK.

Offering:

- Lift & Rise Care Recliners
- Sofas & Chairs
- Fireside Sofas & Chairs
- Manual & Powered Reclining Chairs

Available in 150 Fabric & Leather Covers



A great selection available to see & try for yourself at M&J Furnishing in Wareham - one of the largest Sherborne Stockists in the South!



- Free 5 Year Guarantee

- Free Delivery & Installation

- Express Delivery on all Lift & Rise Recliners



M&J furnishing
15 West Street
Wareham
01929 552 773

Introducing the new
Dorchester Adjustable
Bed..

Why not come and try it
in store?

Waste Warrior Oly Makes A Splash

Litter-picking legend Oly Rush who spends his spare time cleaning Dorset's beaches is to swim the entire length of the Jurassic Coast – almost 100 miles.

Oly, 35, was inspired to raise awareness and money after cleaning up after Covidiot who descended on the Dorset coast during the early summer heatwave and caused chaos.

Plasterer Oly will take on the challenge during August and expects to complete the swim in just ten days. He will be joined by fellow waste warriors Roy Beal, Jake Sculthorp and Rosie Bailey, who will support him on kayaks.

As well as raising awareness of the blight of litter, the swim will raise money for two voluntary organisations that help look after Dorset's beaches – Clean Jurassic Coast and Gopladdle.

Oly will leave from the Jurassic Coast's most western end in Exmouth, Devon, and will pass by Sidmouth and then into Dorset. He will swim past the tourist towns of Lyme Regis and West Bay then along Chesil Beach. At Portland he will take on the famous 'Race', a deadly tide that has claimed many ships and sailors' lives over the years.

He will then swim through the Durdle Door arch, then on to Lulworth Cove, Kimmeridge and Swanage before finishing at the most eastern end of the coastline – Old Harry Rocks. Oly, from Upton, Dorset, who is engaged to NHS worker Tess, voluntarily cleans Dorset's beaches on a weekly basis. He was appalled by the litter dumped along the coast by louts breaking free from lockdown. He said: "I've been helping to clear up litter in Dorset for a long time, but I have never seen scenes of destruction like that before.

"There were two occasions after lockdown measures had been relaxed when the world and his wife seemed to descend on Dorset. Bournemouth and Durdle Door in particular were rammed because we had those spells of very warm weather. As soon as I saw the scenes on the news, I knew I had to get to Durdle Door and clear the inevitable mess these visitors would leave behind. Even I was shocked by what I saw.

"On this precious World Heritage site there was litter strewn as far as the eye could see. There was rubbish everywhere including disgusting items like soiled nappies, used sanitary products and human excrement in plastic bags just left on the beach.

"We had a few unpleasant encounters with people when we pleaded with them to take their rubbish with them – they just could not understand why they were not entitled to dump everything there. It was shocking. If volunteers like us don't pick it up then it ends up in the sea and kills wildlife. I just find it unfathomable that people cannot understand that. I swim in the sea as often as I can, but I have been putting in extra training preparing for this challenge." After spending all evening clearing up the beach at Durdle Door Oly and his fellow volunteers drove the 23 miles to Bournemouth,



which had seen similar destruction. The exhausted volunteers, many of whom were driven to tears by what they had seen, were there until after midnight clearing up the mess hundreds of thousands had left behind.

During the two-day heatwave at the end of June, BCP Council had to declare a major incident when 500,000 people visited its beaches in Bournemouth and Poole – and left behind more than 50 tonnes of waste. In Durdle Door the car parks and nearby villages were overrun, and Dorset Council was forced to close the roads into these tiny Purbeck villages on two occasions.

Volunteers marshalling the roadblocks were even spat at by people who had travelled from as far as the midlands for a daytrip to the south coast. The Lulworth Estate, which owns Durdle Door and Lulworth Cove, is now operating a booking system on its car parks to avoid such overcrowding and chaos again. Oly, a former competitive swimmer, said: "I get why people want to come here. I love living here. All we ask is that visitors respect this beautiful coastline and take their rubbish home with them – it's not a big ask.

"There's only so much we, as volunteers, can clear away and so we really need to drive the message home to people about the harm plastic and litter left on our beaches does. I was privileged on a recent swim to be joined by a seal; it was such a wonderful moment, but I fear for the marine life with all the litter. It is beautiful creatures like this that are being endangered by selfish, thoughtless and lazy humans. If my swim helps hammer that message home then every one of those 96 miles will be worth it."

To support Oly's Swim Jurassic mission go to www.justgiving.com/crowdfunding/swimjurassic



"Nappies - it's time for a change!"



Disposables **Vs** Cloth

Ditch single-use disposable nappies and save yourself up to £600!

For more information visit: **dorsetcouncil.gov.uk/realnappies**

Fundraiser For Durdle Door, By Rhea Soulsby-Phillips



After a shocking beach clean of Durdle Door in early June, my husband, Dave Phillips, and I (Weymouth-based) have decided to organise a fundraiser for Clean Jurassic Coast, a local volunteer network who have been pretty much anonymously cleaning our beaches for years.

To raise funds and awareness of the terrible littering problem our fantastic beaches are facing, we will be

completing a beach clean marathon - seven beach cleans of seven different beaches across the Jurassic Coast on the week of the 20th July 2020. You will be reading this after we have (hopefully!) completed our challenge, but if you support us in our efforts, please still donate on the link below!

We would love to spread the word of this fundraiser and I believe your readers would love to hear about this story. Please see more information about the fundraiser below.

The Just Giving page: https://www.justgiving.com/crowdfunding/cleanjurassiccoast?utm_term=ngaGRW6Xd

Details of our fundraiser

Posts of Durdle Door have flooded people's social media A LOT in the last few weeks. Unfortunately, these are not the usual attractive posts about this iconic beauty spot, but photos of mountains of discarded rubbish, videos of tombstoning idiots, and angry words of despair and hopelessness. Most recently dubbed 'Durdle Dump' and 'World Heritage Shite', it is so upsetting to witness such breath-taking landmarks, disrespected, exploited and abused by people who have used the pandemic as an opportunity to come on holiday and destroy the coastline.

But this is ONE landmark across the Jurassic Coast that is suffering. There are countless beautiful beaches and sites that have been mistreated for decades by selfish, greedy people who simply cannot put their rubbish in a bin. After a post went 'viral' on Facebook, I discovered and joined the volunteer network, 'Clean Jurassic Coast' to complete a beach clean at Durdle Door in early June. I did not mentally prepare myself for the hell and

devastation that the beach is having to endure every single day. There was rubbish everywhere. It was soul destroying. A small group of volunteers picked up tampons, sanitary towels, human excrement, wee in bottles, tents, chairs, probably a million fag butts, bottle tops, broken glass, KFC bags full of chicken bones, pants, socks, sandals, the list goes on. I posted a video on Facebook of the mound of bin bags collected by the volunteers and this also garnered a lot of attention, even from the Lulworth Estate.

I cleaned this beach once. ONCE. And I was emotionally and physically destroyed. There are lots of incredible organisations, charities and volunteer networks who pick up other people's litter EVERY DAY! I am so in awe of them. So humbled by their strength and perseverance in the face of adversity. They need us. They need us to share their story and to help them in this never-ending fight. Which leads me on to what this fundraiser is all about...

Clean Jurassic Coast is a volunteer network who unite all Jurassic Coast beach cleaners and litter pickers in one place. With the motto 'strength in numbers', their mission is to keep the 95 miles of the Jurassic Coast litter free. Working with the Jurassic Coast Trust, Dorset Council's Litter Free Coast and Sea, and many other groups, organisations and individuals, this initiative demonstrates teamwork at its absolute finest. For more information, please visit www.cleanjurassiccoast.uk

THEY NEED OUR HELP. They are in desperate need of safety equipment, even more so whilst we are still facing the power of Covid-19. They need sanitation gel, litter grabbers, bags, gloves, first aid kits. They also really need financial backing to help them work towards solving the bigger issue, **LACK OF EDUCATION.**

They need to run websites, organise volunteer initiatives, post sponsored marketing campaigns, create their own merchandise to spread awareness, organise and run educational visits and events. I know they would be so appreciative of any help your readers are able to offer. Surely, it's the least we can do for them after all the years of quite literally blood, sweat and tears to keep our beaches clean?

Please help spread the word. Share this fundraiser, tell your friends and donate if you can. If you can't, perhaps contact Clean Jurassic Coast and offer your time at a beach clean. Everything helps. As Roy Beal (founder of Clean Jurassic Coast) would say, "Every piece of litter collected is one less for the environment. Every piece is a victory."

PRINCE ALBERT MEMORIAL UPDATE

Exciting plans, currently being made to reinstate an historic obelisk-shaped memorial to a new home in Prince Albert Gardens, are gathering momentum in Swanage.

On Monday 25th May, Swanage Town Council voted unanimously to reinstate the monument at Prince Albert Gardens. Planning permission is currently being sought for this local heritage landmark.

The current project is being funded solely by charitable donations, and the monument will stand on Swanage Town Council land as a local legacy. The Swanage Museum, in partnership with Swanage and Purbeck Development Trust, carried out initial assessments, landscape designs and are now applying for permission to erect this historically notable monument in Prince Albert Gardens. If you wish to support this local project, please see our web page.

<https://swanagemuseum.org.uk/albert-memorial/>

The original Victorian memorial was paid for by the contributions of Swanage residents to commemorate the death of Prince Albert, a much-loved social-reformer and beloved husband of Queen Victoria. The imposing obelisk was first erected in the High Street at the top of Court Hill. The spot was chosen because this was where, at the then entrance to the town, a civic reception committee met and welcomed the carriage carrying the young Princess Victoria and her mother the Duchess of Kent in 1833.

The Prince Albert Memorial was removed from the High Street in 1971 by housing developers and has since languished in a local quarry, despite numerous attempts to find it a new home.





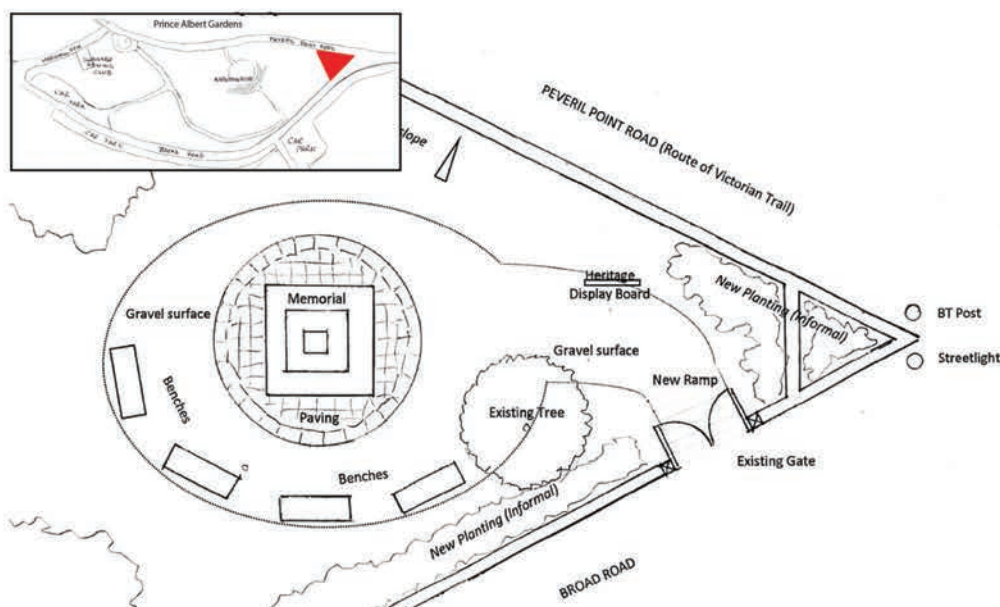
Why Restore the Prince Albert Memorial?

The Monument will be a tourist and heritage attraction, enhancing the visual aspects of the town and contain a small, quiet garden. Named as the “Garden of Reflection” with native planting, seating and views of Swanage Bay and Ballard Down, the garden will enhance a currently disused area of Prince Albert Gardens and provide a peaceful place for personal contemplation in an area of outstanding natural beauty.

The original Prince Albert Memorial, sited on Court Hill, had a far-reaching view of our picturesque Swanage Bay. The new site will mirror this beautiful view, but instead from the vantage point of Prince Albert Gardens – a place to stand and stare, whilst enjoying a panoramic view of the bay, pier and Ballard Down.

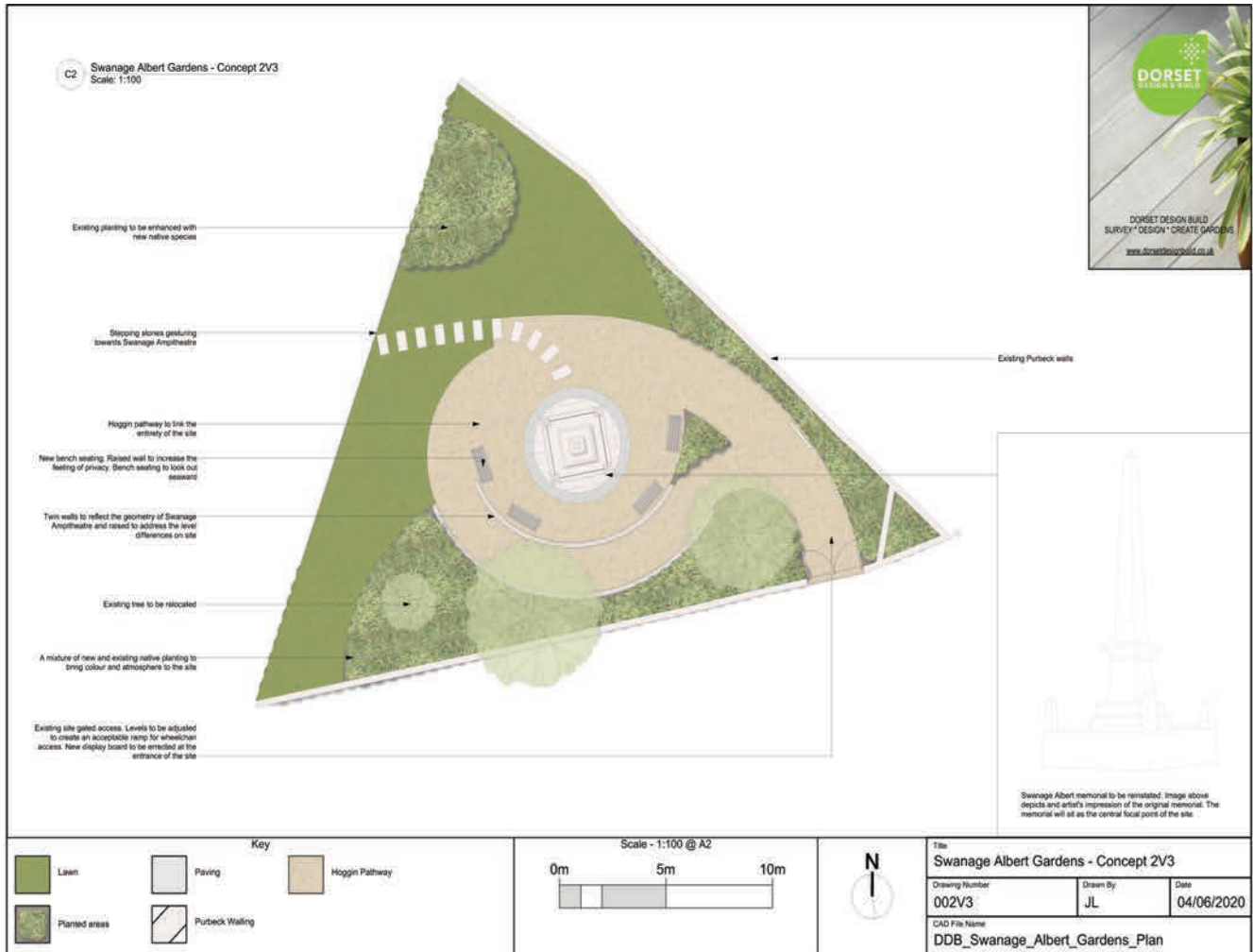
Appropriately, the selected site is already a part of our popular Victorian Swanage Trail. The walk takes you through Swanage town, the countryside and woodlands to discover Swanage and its authentic Victorian heritage.

The Prince Albert Memorial is an important historic memorial for Swanage, originally built by George Burt shortly after Prince Albert’s death on 14 December 1861. The Victorian residents of Swanage felt an abiding affinity to Queen Victoria after she had visited Swanage in 1833. It was the first of the numerous memorials to be raised to this popular Prince.



Its new position is close to where Prince Albert landed from The Royal Yacht at the base of the Zig-Zag in Durlston Bay, when he visited Peveril Point with Sir George Biddlecombe.

Cliff Sutton



THE LEGACY OF PRINCE ALBERT



When Prince Albert died on the 14th December 1861 the whole country went into mourning. Memorials were proposed across the length and breadth of Great Britain. In January 1862, George Burt wrote to the Rev. R. D. Travers, the Chairman of Swanage Vestry, suggesting that Swanage should have its own memorial, to be raised by public subscription. This was agreed, achieved and in place by the end of the year. As such it was the first in the country to be erected.

Many were planned but usually involved a statue of the Prince and sculptors had to be commissioned and the sculptures made. The Swanage memorial took the form of an obelisk which, since earliest times, was the form taken for memorials of this sort. The cost of the memorials, including the national one to be erected near the site of the Great Exhibition of 1851, was raised by public subscription.

The population of Swanage in 1861 was only 2,000 but the money was forthcoming. Other memorials followed in Aberdeen, Hastings, Oxford, Perth, Salford, Tenby, Belfast, Leeds, Manchester, Liverpool, Wolverhampton, Glasgow, Cambridge, Exeter, Birmingham and, later, Edinburgh and Dublin. These were all towns and cities with far larger populations than Swanage.

This makes our memorial even more special - and unique. In Birmingham, Salford and Manchester the money was raised remarkably quickly, as they were all places the Prince Albert had visited several times and was extremely popular.

He had visited Birmingham first in 1843. He and Victoria were staying at Drayton Manor as guests of Sir Robert Peel, the Prime Minister. At the time the Chartist movement was in full sway and Birmingham was the centre of the movement. The previous year had seen violent rioting there. Against all advice Albert was determined to visit Birmingham as it was one of the great centres of manufacturing in the country. He had made arrangements to go to a glassware studio, a rolling mill for sheet metal, a papier-mâché manufacturer, a gun and sword makers, a button factory and Elkington and Company, an electro-plating and electro-type works. Because of his interest in the various manufacturing processes and his scientific knowledge of the principles involved, he endeared himself to the working force and by the afternoon huge crowds had gathered to cheer him on his way.

His interest in the plight of the workers resulted in him accepting the Presidency of the Society for Improving the Conditions of the Labouring Classes when it was formed in 1844. In a speech to the Society in 1848 he said: *"When I accepted with great pleasure the offer of becoming President I saw in this offer a proof of your appreciation of my feelings of sympathy and interest for that class of our community which has most of the toil, and least of the enjoyments, of this world."*

He took great interest in the work of the society in building model homes for workers designed to the Prince's specifications by the society's honorary architect. He thought that the way to alleviate the suffering of the working classes was four-fold: *"Education of the children with industrial training, improvement in working-class dwellings, the granting of allotments along with their housing and the creation of savings banks and benevolent societies, if possible managed by the workers themselves."*

His first public engagement was to accept the Presidency of the Society for the Abolition of Slavery and where he gave his first speech in English on June 1st 1840 in which he said: *"I deeply regret that the benevolent and persevering exertions of England to abolish that atrocious traffic in human beings (at once the desolation of Africa and the blackest stain upon civilized Europe) have not as yet led to any satisfactory conclusion. But I sincerely trust that this great country will not relax in its efforts until it has finally, and for ever, put an end to a state of things so repugnant to the spirit of Christianity, and the best feelings of our nature."*

Such views did not endear him to the British aristocracy and together with the fact that he was German and therefore a foreigner, made him unpopular with that section of society. However, his interests in Art, Music, Science and Education and in many other areas endeared him to the rest of the population.

The politicians who at first distrusted him and feared he would meddle in politics eventually realised his worth. The Duke of Wellington said of him: *"His knowledge and information are astonishing, and there is not a department of the Government regarding all the details and management of which he is not better informed and more capable than the Minister at the head of it. That in foreign affairs particularly he has prevented a great deal of mischief and kept the Government out of innumerable scrapes."*

His election as Chancellor of Cambridge University in 1847 resulted in huge changes in the curriculum and subjects offered. He reformed what was virtually a Theological College for the training of the clergy, offering only courses in the Classics and Mathematics, into a University of world eminence - a position it has retained. His election was, of course, bitterly opposed as were his reforms.

Perhaps his greatest achievement was the Great Exhibition of 1851. This was a huge success and made a surplus of £186,000 (approximately £22m in today's money). As President of the Royal Commission for the Exhibition of 1851, set up in 1850, he made sure that these profits were put to good use by purchasing land in South Kensington and building a succession of museums on the site.

These include the South Kensington Museum (re-named in 1899 as the Victoria and Albert Museum), the Natural History Museum, the Science Museum, the Royal Colleges of Art and Music, the Imperial College and after his death, the Albert Hall. An unusual decision was made to maintain the Royal Commission to use the profits charitably for the purpose of: *increasing the means of industrial education and extending the influence of science and art upon productive industry.* To this day it is making awards of fellowships, to the tune of £4 million annually, for pure research in science and engineering, applied research in industry, studentships in industrial design and Special Awards. A remarkable legacy indeed.

Robert Field

THE ISLE OF PURBECK ANTHEM



Words by Pete Sedgewick, arrangement by Kelp! 2019

Music based on a traditional hymn: 'When a knight won his spurs'

**The sea and the stone
Make this island our home
The countryside's there
For our pleasure to roam**

**With castles and commons
With quarries and cliffs
With beaches and blossom
And views you can't miss**

**The peace of the mornings
The sound of the sea
A new day is dawning
For you and for me**

**The Isle of Purbeck is home
And we all agree
'tis a privilege to live here
Independent and free**

Motoring

Fatal RTC In Wool - Appeal

Officers are appealing for witnesses or anyone with relevant dashcam to come forward as they investigate a fatal road traffic collision in Wool. Dorset Police was called at 5.35pm on Sunday 5 July 2020 to a report of a collision on the A352 between the Woolbridge Roundabout and Wool train station. The collision involved a black Land Rover Defender towing a caravan, a grey Hyundai Tucson and a black Ford Fiesta.

Officers attended, along with the ambulance service and fire service, and a number of casualties were treated for injuries. A man aged in his 30s and from London was very sadly pronounced dead at the scene. His family has been informed.

Four other people were taken to Poole Hospital with injuries that are not believed to be life-threatening.

Road closures were put in place to allow the emergency services to respond to the incident and for an examination of the scene to take place. Sergeant Rhys Griffiths, of the traffic unit, said: "Our thoughts are with the family of the man who sadly died at this difficult time and we are carrying out a full investigation to establish the circumstances of this collision. "I would appeal to anyone who witnessed the collision, or the manner of driving of any of the vehicles involved prior to it, to please contact us. I would also like to hear from anyone who may have relevant dashcam footage.

"Finally, I would like to thank members of the public for their patience and understanding during the road closures. These were absolutely necessary to enable the emergency services to deal with the incident and for a detailed examination of the scene to be carried out."

Anyone with information is asked to contact Dorset Police at www.dorset.police.uk, via email SCIT@dorset.pnn.police.uk or by calling 101, quoting incident number 5:357. Alternatively, or alternatively to stay 100% anonymous, contact the independent charity Crimestoppers online at Crimestoppers-uk.org or call freephone 0800 555 111.

Captured a driving offence on your dashcam or other device?

You can send your video or photos to us and help to keep our roads safe
www.dorset.police.uk/opsnap



Greystone Garage

- ✓ SERVICING & REPAIRS
- ✓ MOT'S CLASS 4
- ✓ TYRES

TEL: 01929 427775

WWW.GREYSTONEGARAGE.CO.UK



foleys

Vauxhall & German Automotive Specialists

Valley Road, Swanage, BH19 3DZ (Harman's Cross)

Tel: 01929 480215. Email: info@foleysgarage.co.uk

2017 (17) Ford Fiesta Zetec 1.0 EcoBoost 5dr in white, Air Cond, Bluetooth, Electric Windows, Electric Mirrors, Sync 2, Alloys, Radio/CD, 20000 miles.....£8,995

2016 (16) Citroen C3 Edition Puretech 5-dr in Blue, Electric Windows, Electric Mirrors, Reverse Sensors, Alloys, Bluetooth. Only 18,600 miles, £20 year-round Road Fund License.....£5,995

2016 (16) Mercedes-Benz A200D AMG Line Auto 5-dr in Blue. 7-Speed Auto, Bluetooth, Climate Control, Electric Windows & Mirrors, AMG Body Styling, only £20 year-round Road Fund License, 56,000 Miles, FSH.....£13,995

2014 (14) Mercedes-Benz B200 Sport CDI in Silver, Alloy Wheels, Bluetooth, Reverse camera, Electric Windows, Auto Lights & Wipers, FSH, only 29800 miles.....£9,995

2016 (16) Audi A3 S-line 1.4TFSi S-Tronic 5-dr in Met. Blue, Sat Nav, Bluetooth, DAB Radio, Cruise Control, Climate Control, only 18750 miles with FSH and £30 per year Road Fund License.....£16,995

2013 (13) Suzuki Grand Vitara 1.9 DDSi 5dr in white, Black leather Interior, Sat Nav, Switchable 4x4, Bluetooth, Cruise Control, 69900 miles with FSH.....£6,995

2015 (15) Vauxhall Corsa Ltd Edition 1.4T 3-dr in grey, Black Alloys, Air Cond, Electric Windows, Bluetooth, Apply Car Pay, Electric Windows, 42,000 miles, FSH.....£6,795

Look out for our new Car Finder page on our website

We now have Trade access to 1000s of cars of all makes & models.

'Click' on the Car Finder link page at: www.foleysgarage.co.uk

ST MICHAELS GARAGE



"THE PURBECK FORD CENTRE"

Valley Road, Swanage

tel: 01929 480221



2019 (19) Ford Fiesta Zetec 1.0 EcoBoost 100Ps, 1.0 litre, manual, petrol, chrome blue, hatchback, our demonstrator, city pack, sync3 navigation, Ford pass connect with embedded modern & WiFi, air conditioning, anti-lock brake system with brake assist, alloy wheels, remote central locking, speed limiter, Bluetooth, hill start assist, automatic headlights, LED daytime running lights, rear parking sensors, 2500k miles.....£14,495

2012 (61) Ford Focus Titanium 1.6 TDCi, 5dr, estate, manual, diesel, moon dust silver, alloy wheels, remote central locking, front electric windows, high adjustable driver's seat, Bluetooth, automatic headlights and automatic windscreen wipers, CD Player, 125k miles.....£3,495

2019 (19) Ford Focus 2.0 Ecoblue TDCi Vignale Estate, 2.0 litre, diesel, automatic, dark mulberry, all usual Vignale extras plus hands free tailgate, adaptive LED headlamps, heads up display, panoramic roof, wireless charging pad, blind spot information system, drivers assistance pack, adaptive cruise control, traffic sign recognition, auto high beam, 6k miles.....£19,995

2016 (66) Ford Fiesta Titanium X 1.0 125ps, petrol, hatchback, manual, deep impact blue, air conditioning, satellite navigation, PAS, ABS, remote central locking, electric windows, service history, one owner, CD player, Bluetooth, hill start assist, city pack, rear parking camera and sensors, heated partial leather seats, 30k miles.....£9,995

See all our stock at

www.stmichaelsgarageswanage.co.uk

"Motoring Locally since the 60s"

Business



Redmayne Bentley

Economic Update

Clearly, the economy, world and life in general is very different to what any of us could have imagined this time last year. Life is slowly returning to a bit of normality, but it will be some time before a lot of things feel normal again and some things may never be the same again.

This period of lockdown has been a time of change and reflection for many individuals and businesses, and there may be a permanent shift in culture for many. For instance, I would expect to see more people working from home, increased use of Zoom and similar for meetings and more online shopping.

At the beginning of July, more easing of lockdown occurred with the re-opening of bars, restaurants, cafes and pubs. Holiday accommodation and hotels could re-open for business and people were able to stay overnight away from home with family or friends or in their second homes. The Chancellor also announced a £30bn package of measures designed to boost the economy, including a Stamp Duty holiday, VAT cuts in the hospitality sector, 'eat out to help out' scheme and return to work furlough bonuses.

With the Covid-19 infection and death rates seemingly falling, the Government is keen to get the economy up and running again. However, with many people concerned about their financial security, measures like these will be needed to inspire confidence and get things going. There is also a huge amount of concern about a second wave of infections, which has meant that many people still remain very cautious about what they feel comfortable doing and spending.

The UK stock market has improved from its lows in late March when the FTSE 100 fell below 5,000, but it remains fairly volatile. It is boosted when there is news of a possible vaccine, lower infection and death rates, economic stimulus or an improvement in the economy, but then falls when economic growth is less than is expected or there is the possibility of a second wave of infections.

The trouble with the current situation is that it is different from anything which has been experienced before and the long-term effects of Covid-19, on individual health and the wider world, cannot be predicted. That said, I believe that global stock markets will continue to be volatile for some time and clearly, some sectors and individual companies are also faring better than others.

In times of uncertainty, it makes sense to have diversified assets and a good cash back-up in case of need. With interest rates low, it also makes sense to pay off debt where possible. Many people's income will have fallen, spending habits will have changed and it is probably more important than ever to look at income and expenditure to ensure that your finances are resilient whatever happens.

Until next month, take care and stay safe.

Kate Spurling, Investment Manager, Redmayne Bentley, Tel: 01202 714 450

Redmayne Bentley is authorised and regulated by the Financial Conduct Authority. Members of the London Stock Exchange. The Redmayne Bentley Bournemouth and Poole office is located at 139 Commercial Road, Ashley Cross, Poole, Dorset, BH14 0JD. Follow us on Twitter @redmaynebentley and visit us on the web at www.redmayne.co.uk/bournemouth



Covid 19 Support for businesses and tax payers

The government have announced a raft of measures and in brief summary the key points are:

Business Grants: Coronavirus business grant fund – check with Dorset Council whether you qualify for this. If so the guidance now states you must actually claim this and not wait to be contacted.

Job Retention Scheme: Support from HMRC available to employers. You continue to pay your staff and claim this back from HMRC. At time of writing it was stated that you will need to do so via your HMRC PAYE online portal although not accepting any applications yet.

Deferral: VAT Payment – payments due between 20th March 2020 and 30th June 2020 can be deferred until March 2021. If you pay by direct debit cancel this at your bank or the payment will be taken as normal. You are still required to file the return as usual.

Personal tax: the payment on account, if due, for July 2020 will not be collected until January 2021 together with any balancing payment. These are both deferments to early 2021 at the time of writing, that is likely to cause cashflow issues at the point so consider if this is actually beneficial.

Loan: CBILS – Coronavirus Business Interruption Loan Scheme. This has just been updated and we are seeing applications granted. These are available from your own bank and other lenders. They are repayable over a period of up to six years. The bank's lending is guaranteed to 80% but your business is liable for the full amount.

MKL Accountants Limited

Chartered Certified Accountants
Herston Cross House, 230 High Street
Swanage BH19 2PQ

T: 01929 425552

E: mail@mkla.co.uk

W: www.mkla.co.uk

Ptnsystems



IT Support

PC & Server • Home & Business
Computer Sales • Data Transfer
Backup • WiFi

Web Design

Responsive Design • Hosting • Transfer
Artwork • Logo Design
SEO • Online Advertising & Branding

www.ptnsystems.com • info@ptnsystems.com • 01929 475828

John Garner Copywriting

- Brochures
- Website and SEO copywriting
- Features and articles
- Press releases
- Blogs
- Email content
- Direct marketing letters
- Newsletters
- Proofreading



johngarnercopywriting.co.uk
johngarnercopywriting@gmail.com
Mobile: 07827 871261
Office: 01929 556245



ARE YOU LOOKING TO ADVERTISE HERE? WE BUILD ADVERTS!!

OUR SERVICES

- ADVERT BUILDS
- WEB DESIGN
- PHOTOGRAPHY

PLUS MUCH MORE!

working together to help your business grow!

WHAT WE DO


We specialise in creating eye catching adverts which help you **get your business noticed.**

We build small trade ads right up to full page features, tailor made to suit your needs, then publish them here in the Gazette at the best possible price.

WHY CHOOSE US?

- We give you a free consultation
- We do all the hard work for you
- We design your advert
- We can do the photography
- We publish it in these pages
- We are locals working for locals!

ask.purbeckdesigns@gmail.com
www.purbeckdesigns.co.uk



01305 269214

Volunteer Centre Dorset has an exciting volunteering opportunity with ourselves that we would like to tell you about.

One of our initiatives is the Community Credits Scheme which supports people with learning disabilities into volunteering. This was put on pause when lockdown was announced back in March. With the easing of restrictions we are looking for 'volunteer buddies' to support people with learning disabilities back into volunteering, building their confidence in the new 'normal' we find ourselves in.

The role of the 'buddy' will vary by the needs of the individual, but it can include going with the individual to places of interest/activities, accompanying them whilst shopping and to potentially support them as they undertake their volunteering role. The most important thing is to offer friendship and a listening ear.

This role requires an enhanced DBS check, which we can support you in applying for if the role is of interest. You will also be required to observe Government and NHS guidelines at all times.

If you have some time to spare and can help these individuals recognise that they are a much-valued part of our community, we would be pleased to hear from you. Please contact Siobhan on 07918 639014 for an informal chat: s.davis@volunteeringdorset.org.uk

Full training and support will be provided and expenses met.

Thank you again for all your support during this difficult time.

Stamp Duty Relief



After several months of being in lock down without being able to move or attend viewings, it will have come as a relief to many purchasers to learn of the Chancellor, Rishi Sunak's, announcement on Wednesday that the threshold for the payment of Stamp Duty Land Tax (stamp duty) has been temporarily increased to £500,000.00 up until 31 March 2021.

Stamp duty is a tax paid by anyone who purchases a property in the UK. Previously, there were different rates across England and for certain types of buyers but from 08 July 2020, any person or persons wishing to purchase a new property in England and Northern Ireland to use as their main residence (be it a first time buyer or a seasoned home mover) will not pay any stamp duty on the first £500,000.00 of the purchase price. .

As an example, a purchaser wishing to purchase a property for £390,000.00 would previously have had to pay £9,500.00. However under the new guidelines, the stamp duty payable is now £0, a huge financial saving. This also applies to those people purchasing a new leasehold property up to £500,000.00.

For those purchasing for more than £500,000.00 there are savings also as you will only be taxed on the amount over £500,000.00 on a sliding scale.

As an example, a purchaser who has agreed a purchase price of £715,000.00 prior to 08 July would have paid £25,750.00 in stamp duty. The same purchaser will today pay £10,750.00, a saving of £15,000.00.

Those people who are not replacing their main residence and are purchasing a property to let out or for use as a second home will still be required to pay the higher rate of stamp duty at 3% up to £500,000.00, but, the new rules mean this is not now paid on top of the standard rate of stamp duty since there is the new zero relief up to £500,000.00. Those purchasers will therefore also incur a financial saving.

As an example, someone purchasing a second home for £250,000.00 would have previously had to pay stamp duty at £10,000.00, which includes the higher rate stamp duty land tax portion. From 08 July, however, the stamp duty payable would just be the higher rate portion of £7,500.00, a saving of £2,500.00.

This news today is very much welcomed by home buyers across England and will be an instant saving for those that are completing after 08 July until 31 March 2021.

Sarah Ford, Senior Associate Solicitor and Head of Residential Property says: "we very much anticipate a sharp rise in those people now looking to purchase a property and hopefully a busy summer period to get the economy moving once again. If you have been thinking about moving properties whilst in lockdown, now may be the best time to start looking for that new idyllic property whilst being able to potentially make a huge financial saving on stamp duty."

For those looking to move, or if you wish to discuss the stamp duty changes further, please do not hesitate to contact a member of our residential property team.

For more information, contact Sarah Ford on 01929 500328 or email sarah.ford@battens.co.uk.



**Offices in Wareham, Dorchester, Yeovil, Sherborne,
Castle Cary, Bath and London**

01929 768720

PURBECK COAST
101.2FM

YOUR COMMUNITY RADIO STATION, BROADCASTING FROM THE COMMUNITY,
FOR THE COMMUNITY AND BY THE COMMUNITY. LISTEN LIVE TO DAVID
HOLLISTER ONLINE ON DRIVE TIME, WEEKDAYS, FROM 4-6PM

www.purbeckcoast.com text: 07553 236500 01929 424424
hello@purbeckcoast.com Twitter: Purbeckcoast Facebook: Purbeck Coast

Local Financial Advice

Investments, Pensions and Protection
for your family or business.

Quilter
Financial
Advisers

For a free initial consultation
contact Ian Fletcher on:

M: 07581282440 E: ian.fletcher@quilterfa.com

Face Coverings Now Mandatory In Retail Premises

From Friday 24 July 2020 Government COVID-19 legislation changes mean it is now mandatory to wear a face covering in all shops and retail premises.

The measure will see all shops able to prevent entry to the premises to anyone not wearing a face covering.

The new measure will see police given powers to issue a fixed penalty notice to anyone refusing to comply with the legislation, although Dorset Police will be adopting an educate, engage and encourage approach with enforcement as a final option.

Assistant Chief Constable Sam de Reya said: "The Government has announced the change to COVID-19 legislation in order to further protect the public and those working in retail premises from being exposed to the pandemic.

"As lockdown measures ease there is a need for us all to be socially responsible. Everyone must play their part in reducing COVID risk and protecting each other as much as possible.

"Detailed guidance concerning the legislation is still to come, but Dorset Police will be adopting an approach similar to that already seen with face coverings being mandatory for those travelling on public transport.

"We will be engaging and educating the public and only using enforcement as a final option. I prefer to see engagement with the public rather than

Dorset Police officers having to give a £100 fixed penalty notice to any member of the public for refusing to comply with the legislation.

"My hope is that everyone will be socially responsible and play their part in keeping our residents and many tourists in our region safe."

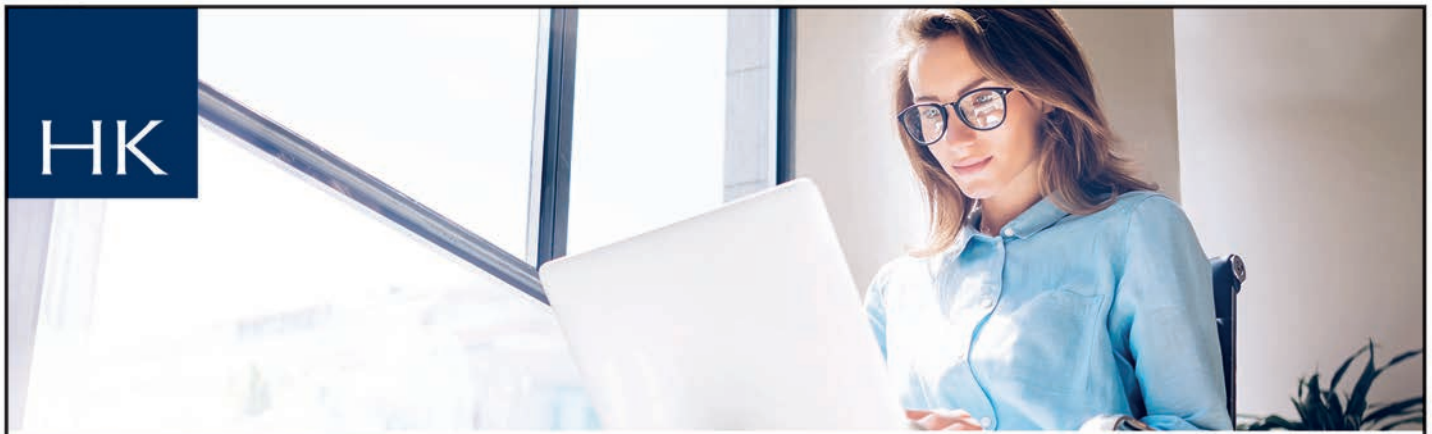
Dorset Police has been talking to businesses and retailers throughout the last week to ensure support is given to the economy in the region as it continues to re-open following lockdown.

Visitor numbers across the region are seeing considerable increases as the county's shops and hospitality industry has re-opened.

ACC de Reya added: "We must support our economy as it looks to restart and come together as communities at a critically important time for the tourist industry.

"But that needs to be done safely. Many of our businesses, particularly those in retail and hospitality, have taken extraordinary measures to increase safety to the public, wearing a face covering is the next step to reducing risk.

"COVID has not gone away and the responsibility for wearing a face covering sits with an individual. We know shops have already been managing customers effectively, so we hope everyone will adapt to the new measure and play their part in creating a safer county for residents and tourists alike."



HK

We're here for you

At this time of uncertainty, we understand the difficulties everyone is facing. At Humphries Kirk, we can offer our full support, whatever your legal needs.

■ Employee rights ■ Wills ■ Powers of attorney ■ Moving house ■ Family issues

Get in touch and find out how we can help you

HK Humphries Kirk
solicitors and arbitrators
For life in all its colours

Swanage
01929 423301
hklaw.uk/swanage

Wareham
01929 552141
hklaw.uk/wareham

ELLIS
JONES
SOLICITORS

Legal advice for tomorrow. Today.

We are a leading regional law firm with offices across the South Coast and London.

Call us on 01202 525333

ellisjones.co.uk

Bournemouth | Canford Cliffs | Ringwood | Swanage | Wimborne | London

Dorset Council Reopens Its Leisure Centres



Dorset's sports and leisure centres welcomed back customers from Saturday 25 July. The facilities closed in March due to COVID-19. Guidance published by the Government outlines measures that allowed indoor swimming pools and sports facilities to reopen. Social distancing measures will be in place in all the centres, together with rigorous cleaning regimes.

Touch-points, such as door handles and railings, and all equipment will be cleaned regularly and hand sanitising stations positioned around the buildings. Centre employees are receiving COVID-19 training to help them understand and implement plans for the safety of customers.

Councillor Tony Alford, Dorset Council's Portfolio Holder for Customer, Community and Regulatory Services, said: "Our sports and leisure centres play an important role in the health of Dorset's communities, so we are looking forward to opening our doors again. We'd like to reassure everyone that we have implemented strict measures to ensure the cleanliness and safety of our centres. This information can be found on our web pages and we would ask people to familiarise themselves with the detail prior to attending their centre. We thank all our customers for their continued support and patience and look forward to seeing them again soon."

Full details of activities available, opening times and booking and payment arrangements can be found on each centre's webpage, which will be updated from 25 July to ensure information is up to date before re-opening. Visit our website to find your nearest leisure centre. Read the Government announcement, including the measures set out in its guidance.

Whizzbits
Computer Sales & Support

- PC and Laptop support & repair
- Virus removal and prevention
- Internet setup (wireless/wired)
- Microsoft Windows issues resolved
- Computer hardware sales & upgrade
- PC Health & security checks
- Data recovery & backup
- 1-2-1 Tuition



Call Pete on:

01929 421989

or 07900 992110

Email: info@whizzbits.co.uk

www.whizzbits.co.uk

Trading Standards check and approve
businesses, so you don't have to...



For businesses you can trust, Buy With Confidence

Visit buywithconfidence.gov.uk or call **03454 04 05 06**



From The Kitchen Garden...



Simple Salad Dressing

By Regula
Wright,
Godlingston
Manor Kitchen
Garden

It's been such a busy summer so far, not only in the Kitchen Garden but also on the hill with the cows' calving time nearly coming to an end. And very well they've been doing too!

So far there's only a little heifer calf from a set of twins that needs extra feeds. She's a bright one and spends her days doing exactly what her twin sister and all the other offspring are doing - eating, socialising, resting, playing and copying the grown-ups. As soon as she hears me arriving with some milk, she'll come and find me, guzzling down her portion with great gusto. So good to see her thriving and bouncy, it really makes my day!

After checking the cows and making sure they also have plenty of water, I also must make sure all my plants get enough moisture to grow at a reasonable rate. It's been such a dry spring and summer so far. Quite a few of my salad crops and leafy greens tended to bolt far too early, so I'm still doing some quick growing salad leaf sowings well into September.

Some of the weeds are doing very well even in this dry period, so hoeing and weeding are ongoing until the time and opportunity come to shade them out with a thick mulch of rotted manure/seaweed or some such.

The garlic is all harvested now and drying nicely in the breeze. I think the wet winter followed by this year's sunny spring with fierce sunshine day in day out really suited this crop, so it's grown very well, storing energy in great big, fat cloves.

The spuds and tomatoes are strong and healthy so far as the atmosphere has just been too dry for any blight spores to develop. Fingers are crossed as August can be the month in previous years, when I have lost whole crops of both. As these plants are related, if one gets it, the others won't be far behind. So far so good though...

As we've had gusty and strong winds for days on end, I've had some wind burn on some of the squash plants and the beans have been suffering too. Being whipped about in all directions really checks them, but there's not much I can do about it, so I just keep a close eye on their needs and they should come good.

Growing organically requires patience and tenacity, there's no quick fix but the results are seasonal, healthy and tasty vegetables.

Luckily, cooking is easy in summer as the choice of fresh produce is wide and varied when time is at a premium.

With that in mind, a lot of raw vegetables are being eaten at our house and a tasty salad dressing is vital.

This simple recipe I learned at secondary school in the 1980s in the cookery and housekeeping lessons. I've been using it ever since....

Simple Salad Dressing:

- Good vegetable oil (olive, corn, rapeseed) 3 parts (whatever measure you're using)
- Vinegar (apple cider, red /white wine any sort) 1 part
- A touch of mustard and mayonnaise (to help emulsify the dressing)
- add to taste dried herbs, a little honey, ground pepper, sesame seeds etc.
- Keep in a glass jar/bottle in the fridge and shake before using.

Godlingston Manor



Kitchen Garden

Seasonal, freshly-picked fruit,
vegetables, herbs & cut flowers

...grown on your doorstep...

For more information,
contact Regula Wright on 07758 013230
regula@talktalk.net

01929 427644 • www.villageinn-swanage.co.uk
1.5 miles from Swanage

OPEN FOR BUSINESS!



We are now open and are pleased to be able to welcome our customers back!

Booking is preferred indoors, reduced seating for your comfort. Please wait to be seated.

OPEN ALL DAY FOR DRINKS
BREAKFASTS: 10am - 11.45am
LUNCH: 12 noon - 2pm
EVENING MEALS: 6pm - 9pm



Square & Compass

Worth Matravers

www.squareandcompasspub.co.uk

01929 439229

WE'RE OPEN - COME SEE US!

We are open from 11am every day in August. Everything is outside in our amazing gardens, hopefully under sunny skies!
Pints, Pies, Pasties and Sausage Rolls as usual!
NO BOOKING REQUIRED
Come up and enjoy the 'Square' atmosphere and support your local, independent establishments!



THE ANCHOR INN



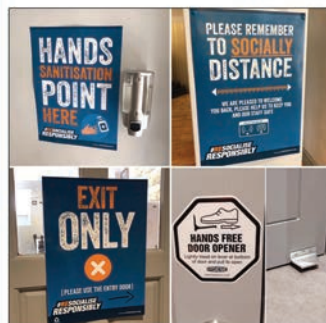
We are open every day from 12 noon

Serving food every day, including roast on Sundays

Dogs are welcome!

Booking is currently advisable with less seating due to the current government guidelines

Please phone: 01929 792669 or book via social media



The Anchor Inn Swanage, 30-32 High Street, Swanage. BH19 2NU
01929 792669 www.theanchorinnswanage.co.uk
Email: theanchorinnswanage@gmail.com

PURBECK WHOLEFOODS



Community
Mask
Trees
We're proud
to be your
local stockist!

We are proud to be part of the 'Community Mask Tree' group. Local volunteers provide masks which are made available to the public for a small donation of £2, which will go to Forest Holme Hospice. You will find the masks we have available hung on our shop porch. Please do pick the one you like and support Forest Holme!

Opening Hours: Mon - Sat, 9am - 1pm

We're serving from the shop door and taking telephone orders.

Local deliveries can be arranged on a one-to-one basis.

REFILLS STILL AVAILABLE!

We are here for you
We are open - we are safe!

37 North Street, Wareham. BH20 4AD. Tel 01929 552332 email purbeckfoods@yahoo.com

Seventhwave

Durlston Castle

Lighthouse Road

BH19 2JL

**open daily from
10am**

Breakfast - lunches - snacks

freshly ground coffee

cream teas

high teas

gluten free options

fully licenced

locally sourced produce

home cooked lunches



**Dogs and reservations
welcome!**

01929 421 111

www.seventhwave.com

seventhwave
café bar & restaurant



Natural Matters

Small Steps

by John Garner

With things changing so quickly at the moment the fine details of this article may have altered by the time of publication. Indeed, the whole of the details of this article may have changed. Given my penchant for inaccuracy I could begin all my monthly columns with this disclaimer, but Covid 19 has given me the perfect excuse. It's arguably the only positive thing I can think of in relation to this virus. Or maybe not.

Usually August is the busiest month in Dorset. This is entirely understandable. The beaches are packed, and the tracks and paths are full of hikers and ramblers and that's just the way it is and as it should be. The Purbeck Way, the coastal path, the bridleways and the footpaths are there for everyone to use and it's great that they are there.

At the start of the lockdown all the trails were pretty deserted. A fairly self-evident statement. You could generally see another walker from a great distance and make an exaggerated semi-circular detour round the edge of the field to avoid any chance of contact whatsoever.

Rightly or wrongly, our collective confidence has grown. Now we do a strange avoidance dance every time we get within about 10 feet of anybody and we're doing the dance more often. Striding off into the distance every time you see someone now would result in either a never-ending walk or a very quick one as you scurry back to the safety of your 4 walls. Neither option fits the bill.

The pubs and restaurants seem to have been reasonably well-attended, but this attendance survey is based purely on me driving past and craning my neck to see how many people are sat by the window. Not very scientific, but as we've seen science should only be used when it backs up the agenda you've already decided upon. I haven't summoned up the courage to eat or drink inside one as yet. I've had a pizza outdoors and some 'smashed avocado' on toast also outside, but I'm still very wary of eating in. And if there's a restaurant owner, publican or café proprietor reading this (and heaven alone knows why you would be) these warblings are merely my own insecurities being played out.

The natural world cracks on regardless. The House Martins are still in residence and their relentless activity shows no signs of abating. Neither does the extraordinary amount of waste they produce. That's a lot of insects. A small price to pay for such acrobatic entertainment.

Masks may or may not be compulsory in shops now. (Actually, as I write they have just been made compulsory, but this is at 4-30 on a Monday and by 6 o'clock they may well be discretionary again depending on who's turn it is with the playground microphone.

Clarity has not been the watchword of big bad Dom and his chums. Masks can look a bit 'Silence of the Lambs' but scaring the s*** out of people is a small price to pay for your health. Maybe the crap produced by the House Martins has been exacerbated by seeing people in masks. Or again,

maybe not. We are being told to spend our way out of the recession. I tried to do my bit earlier today but couldn't find a restaurant in which to do so. So, I returned home and tried to think about the things that made the lockdown bearable.

I'm not the biggest spender anyway so I didn't miss that. I didn't even really miss the smashed avocado, which I can reasonably faithfully reproduce at home. Even the smell and taste of fresh coffee has been replicated by a new coffee machine, one of the few purchases during the lockdown.

None of these things caused anything other than an occasional frown if truth be known. Family, friends and nature have been the sustaining influences over the enforced isolation. As we carefully edge out of the door and back towards some kind of normality, it might be good to remember what has kept us going through the last few months.

Daily walks were a tonic. Seeing the changes in the landscape as the season went from spring to summer on a daily basis has put us much more in touch with the area.

I have also become somewhat enamoured with the basics of social media to keep in touch with close friends and family and whilst I recognise that when our busy lives regain momentum, this may well be the first thing to fall by the wayside, I hope not.

I hope to be taking regular walks as the Summer gives way to Autumn and then into the Winter. And, with luck, a return to the season of spring and the good feelings that are nearly always engendered in that season will see a change in all our circumstances for the better.

It will, by then, be a year since the beginning of the lockdown and we will either be in recovery or dealing with this thing in whatever way we can.

Either way, the role of the outdoors in whichever scenario we find ourselves will still, and always be, vital.



Holme Sawmill

Producers of Quality English Timber & Timber Products

Seasoned Hardwood Logs & Kindling

A wide range of timber in stock,

we can cut & produce to your specifications.

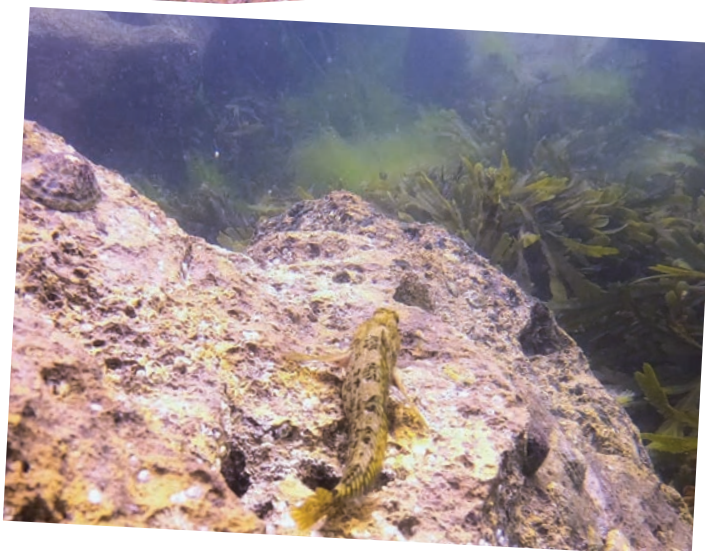
We specialise in beautifully crafted bespoke timber products

Tel: 01929 552480 Email: holmesawmill@yahoo.co.uk

A Glimpse Under The Waves

Ever wondered what you're standing on when you nip in for a paddle?

Editor, Nico Johnson, offers a look at our coastline from beneath the waves....





13D Riverside Park Wimborne
Dorset BH21 1QU

01202 888561

www.firebydesign.co.uk

Agricultural Shows Launch Virtual Farming Series



The Dorset County Show and Gillingham & Shaftesbury Show are coming together for the first time to bring British farming to the public's homes via a new virtual content platform – 'Farming @ Home'.

Aiming to promote agriculture and educate

the nation, 'Farming @ Home' will see Show Organisers work together to produce and share a wide range of authentic, topical content across social media channels.

Content will provide an in depth, real life view into the lives of Dorset farmers from all walks of life – from mainstream farming enterprises including dairy, sheep, pig and arable, to more unique farm enterprises, to showcase the diversity of British agriculture.

The launch of the new virtual content platform comes following the cancellation of both the Dorset County Show and Gillingham and Shaftesbury Show this year. Spanning nearly 200 years of history, both Shows are well-established annual fixtures in the county calendar for both the agricultural and local community, typically attracting around 80,000 visitors each year as a collective.

Launching next week, the 'Farming @ Home' virtual content will be free to access, with the first piece in the series exploring Dairy Farming.

Rebecca Hill, Chairman of the Dorset County Show commented: "Our Dorset Agricultural shows are critical for educating the public about the farming industry, as well as promoting our county's wealth of high-quality food and craft producers.

"While the COVID-19 pandemic has sadly meant neither Show can take place this year, our nation's farmers have continued working incredibly hard to keep up with demand – so we wanted to find an alternative way to support them and promote excellence in agriculture, the countryside and rural life.

'Farming @ Home' is designed to reach the public in an easily accessible format, providing new and engaging content to help give a deeper understanding of the workings of our agricultural industry, as well as Dorset's artisan producers.

"We're delighted to be combining forces with the Gillingham & Shaftesbury Show to drive this forwards and showcase all the incredible things our county has to offer."

James Cox at the Gillingham & Shaftesbury Show added: "Now more than ever, it's important that we all come together to support one another during these uncertain times, so our 'Farming @ Home' launch with the Dorset County Show is testament to this.

"Our county is renowned for its rich agricultural heritage and diversity, so 'Farming @ Home' is set to celebrate this and raise awareness about agriculture on a wider scale – tapping into the ever-growing popularity of social media and production of shareable content."

'Farming @ Home' will be hosted on the Dorset County Show's and Gillingham & Shaftesbury Show's Facebook, Twitter, Instagram and YouTube channels from next week:

Facebook:

<https://www.facebook.com/DorsetCountyShow/>

<https://www.facebook.com/GillinghamandShaftesburyShow>

Twitter:

<https://twitter.com/DorsetCShow>

https://twitter.com/GandS_Show

Instagram:

<https://www.instagram.com/dorsetcountyshow2020/>

<https://www.instagram.com/gillinghamandshaftesburyshow/>

YouTube:

<https://www.youtube.com/channel/UCyXCAJlb174WNLVBL6H9AaH>

https://www.youtube.com/channel/UCqTUIaQTnTaWdeg_rt4pvxQ

Studland's Dynamic Dunes



**National
Trust**

Data from the Cyril Diver citizen science project in 2016, revealed that Studland is losing its dramatic mix of habitats. It showed species like Sand Lizard and Meadow Pipit shrinking in distribution, their numbers squeezed to the dune edges.

Climate change, air pollution, reductions in land use and over-protective management are all causes of our dynamic dunes turning static. Now Studland's mosaic landscape is slowly being smothered by gorse and trees. Open sandy habitats are being buried and rare life pushed out.

Pictured, below: Left: in 1936, right, in 2014



By Julia Galbenu (Dynamic Dunescapes Engagement Officer)

On the edge of Purbeck, past the wildflower meadows and pretty towns, across the coast and over the beachline.

There lie Studland's wild dunes. A playground of sandy hills and endless adventure. A land of constant change with bare ground, long grasses, pretty heathland, dense scrubland and scattered trees.

A home for special and rare life. And a place that is in trouble.



Dynamic Dunescapes is a nationwide project that aims to bring life back to the dunes of England and Wales.

At Studland, four routes will be taken to restore the land:

1. Bare ground creation using excavators
2. Reintroduction of cattle grazing
3. Removal of invasive carp from Little Sea





4. People

What better way to open the land, limit vegetation growth and create some much-needed disturbance than our very own feet?

We want to remove the presumption that exploring the dunes will harm them. Instead we want to encourage people on the dunes, to learn about them, experience their beauty and maybe even help them.

If this intrigues you, keep an eye out for upcoming activities, events, opportunities to volunteer and participate in citizen science. If you can't wait till then, trail off the beach and explore the secret paths hidden within the dunes.

The Dynamic Dunescapes project will essentially open the gates to

Studland's dunes. Reforming natural cycles of dune dynamics to restore a mosaic landscape. When this happens, it is also critical that we strike the right balance.

We must target our efforts at the right place and time of the year. Being mindful of different breeding seasons and avoiding vulnerable areas.

If we strike the right balance and let nature steer us, we can restore so much of what has been lost – we can again see this mosaic landscape of open sandy habitats with lots of special life hidden inside.

For we have always needed the dunes, but it is only just becoming clear to us now that the dunes need us too.



*Are you looking to Maximise
your outdoor Living space?*

BRAND NEW SHOWROOM in Wareham, Dorset

- ✓ Dorset's only Veranda, Awning & Aluminium Pergola Showroom Experience
- ✓ We offer Innovative outdoor living solutions
- ✓ Free Installations
- ✓ 25% discount on purchases made from all Showroom appointments
- ✓ 24 months interest free option (subject to terms & conditions)
- ✓ 30 years' experience
- ✓ 55,000 satisfied customers across the UK

Call us today for a showroom appointment: 01929 554901 www.nationwideltd.co.uk



DURLSTON

COUNTRY PARK & NATIONAL NATURE RESERVE



We are delighted that "Walking & drawing with Tony Kerins" reopens the Fine Foundation Gallery. Visitor numbers are being controlled to enable social distancing.

Please be patience should you be asked to wait before entry, as this is for our safety! The exhibition showcases pieces predominately influenced by a walk in Purbeck. Tony reflected:

"It's one of the features of Durlston that you climb through enclosed paths to an elevated vista, open on two sides to the sea. At first you see things close up, growing and changing. Then there's open space and you look out, to where you have come from or where you might go."

Along with the exhibition of drawings and paintings will be prints and an accompanying book for purchase until the 9th August! Shortly after Tony we welcome a new display from the Dorset Area of Outstanding Natural Beauty Exhibition (AONB).

Sixty years ago, almost half of Dorset was officially recognised as OUTSTANDING – an astonishing mix of beautiful landscapes and great views. For the diamond anniversary celebrations, the Dorset AONB asked, "what do you think is so special about the AONB landscape".

Four hundred images were submitted of which sixty have been selected and form this "Landscapes for Life" exhibition.

Outdoors the young of the Painted Lady butterflies that arrived in early

spring now emerge on our shores. Having been laid here as eggs, the metamorphosed caterpillars emerge as butterflies.

These must return to Africa and Asia to lay their eggs there as our winters are too harsh for them to overwinter here. Common Blue, Gatekeepers, Large White, Meadow Brown and Red Admiral may also be seen.

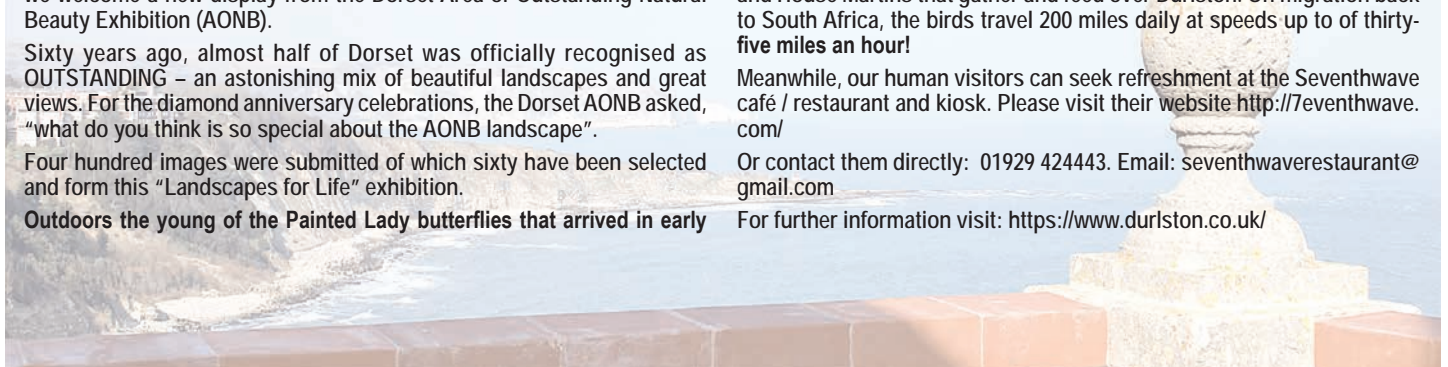
The three-inch-long Great Green Bush-cricket is an impressive insect, but will you be skilled enough to photograph one? Smaller specimens about include Dark Bush-cricket, Grey Bush-cricket and Roesel's Bush-cricket as well as Long-winged Conehead, Field Grasshopper, Stripe-winged Grasshopper, Common Green Grasshopper and the most numerous Meadow Grasshopper.

This insect bounty is a perfect food source for the hundreds of Swallows and House Martins that gather and feed over Durlston. On migration back to South Africa, the birds travel 200 miles daily at speeds up to of thirty-five miles an hour!

Meanwhile, our human visitors can seek refreshment at the Seventhwave café / restaurant and kiosk. Please visit their website <http://seventhwave.com/>

Or contact them directly: 01929 424443. Email: seventhwaverestaurant@gmail.com

For further information visit: <https://www.durlston.co.uk/>






Holme for Gardens

- Your Local **Garden Centre** with knowledgeable staff
- Large **Farm Shop** with Local Produce at its best
- The **Orchard Café** with delicious Holme-made cakes, cream teas & lunches

There's No Place like Holme this Spring for...

- Traditional Cottage Garden Plants
- Colourful Bedding Plants
- Spring/Summer Flowering Shrubs

Enjoy a cream tea or two with friends on the Orchard's tranquil terrace area by the pond.

GLORIOUS SPRING GARDENS NOW OPEN

Holme Nurseries Ltd, West Holme Farm, Wareham, Dorset. BH20 6AQ - 3 miles from Wareham
office@holmeforgardens.co.uk | www.holmeforgardens.co.uk | 01929 554716




Gazette Gardening

with Simon Goldsack

Let's Hear It for Hydrangeas

Hydangeas are a familiar plant in English gardens and their popularity is well warranted. They love living by the coast as this is where many are found growing wild in Japan.

They flower throughout late summer and even into autumn the flowers continue to provide colour and interest as they mature. Not many shrubs can boast a five-month display period!

There are many popular species but I would like to draw your attention to *H. paniculate*, as in recent years there have been a huge number of new introductions.

H. paniculata is a far tougher form than other species, tolerating much lower winter temperatures and it's not fussy about soil type so long as the drainage is good. Some forms will attain 2m but most of the modern hybrids have been selected for a more compact shape and or for the beauty of the flowers.

The flowers are borne in huge, conical clusters that are quite spectacular. As well as the long flowering period they mostly start off white and mature to various shades of pink. Have a look for the following varieties:

Hydrangea pan. 'Bobo' (below) is a dwarf form with compact strong stems. White maturing to pink. 1m.



Hydrangea pan. 'Limelight' (left) is one of the early selections reaching 1.6m. The colouring is creamy green in bud opening to pure white. A little pinking late on in the season.

Hydrangea pan. 'Little Lime'. (top right) The lime green flowers fade to cream and eventually assume some pink late on in the season. 1.2m

Hydrangea pan. 'Pinky Winky' (2nd down on right) is initially white but quickly turns pink from the base



of the flower panicle giving a lovely two-tone effect.

Hydrangea pan. 'Silver Dollar' (right) is another compact form reaching 1.2m. The flowers are more rounded than other forms and the stems are strong.

Hydrangea pan. 'Sundae Fraise'. (bottom right). A compact and bushy form reaching 1.2m with flowers that quickly turn pink and white.

Holme for Gardens will be featuring these lovely plants throughout August along with many other late summer flowering plants.

If you need advice, one of the Holme gardening experts will be happy to help you.

We look forward to seeing you soon!



Wareham In Bloom - Carry On Regardless!



We're carrying on regardless, Covid-19 is not going to beat us and Wareham WILL get its annual town centre flower display! This was the rallying cry for the members of the Wareham in Bloom Committee who vowed to battle on, virus or no virus, at this critical time in our nation's history, as the Government's lockdown directive was announced and funding sources from sponsorship dried up.

There followed frantic efforts to fund and source plants and prepare baskets and stands ready for the big day in June when all members and community volunteers were asked to join in with the planting up of North Street and the Town Hall.

Thankfully, it was a bright and sunny day and planting was achieved by the end of the morning, with the crew sticking to a strict plan and social distancing a top priority - easy to say but difficult to stick to at all times! Since then, more planting of baskets has been achieved on the public library walls and northern entrance to Wareham by Town Hall staff, and outside the police station in Worgret Road by volunteer Bill Rogers. The result has been a colourful and life enhancing sight, with the plants now thriving in situ, giving residents - and hopefully, many visitors - a sight for sore eyes.

Volunteers are always needed, you don't have to join the committee, and if you wish to help out please contact the Chairman of Wareham in Bloom, Cllr Carol Turner on 01929 556761, who will be delighted to hear from you. A little deadheading and watering can go a long way!

Rod Curtis, Wareham in Bloom Publicity Officer



Nature In Lockdown



The RSPB is asking Dorset residents to share how nature has supported them during lockdown

- Nationwide celebration of nature during lockdown begins
- The RSPB is inviting Dorset residents to share how nature has lifted their spirits during lockdown, from nature aficionados to nature novice's exploring their green spaces for the very first time
- During lockdown, more than ever, we've seen how important the natural world is to our wellbeing, with 77% of people in England finding that visiting nature has been important for their general health and happiness.

The RSPB is inviting people from Dorset and across the UK to share the new things they have noticed that's different in their world, and what they have started to value more during these unsettling times as part of a nationwide celebration of nature and wildlife

Since the UK first went into lockdown it's been a unique time for most of us. This spring has been unlike any other and, more than ever, we've seen how important the natural world is to our health and wellbeing.

From enjoying the uplifting sound of birdsong through an open window, to getting a welcome dose of fresh air and exercise in a local park, many of us have found solace in nature and had time to notice what's going on around us.

Adam Murray, Head of Community Empowerment at the RSPB, said: "Connecting with the natural world is more important than ever. Over the last few months, as we juggled work, family life and wellbeing, all from the confines of home, the natural world became a playground, a gym, a tonic, and much more besides. But while our lives have changed, the threats to nature have not gone away.

"We'd love you to share the new things you have noticed and started to appreciate more in your world – large and small. Whether it's cleaner air, the wildlife in your local park or getting creative in your support of the natural world, we'd love to hear about it. We want to know what you've

started to value during these strange times."

Nature enthusiast, Daisy Hughes, said: "I've noticed that some of my nearby verges are being mown less often, meaning they're full of ox-eye daisies, orchids, dandelions, trefoil and clovers – gorgeous, amazing for pollinators and an absolute oases for insects in a heavily built-up area! Would love to keep it like this after lockdown wherever growth doesn't obstruct road view – would be great to see councils following "no-mow May".

To get involved, simply share your stories and photos using #MyWorldNow on social media. Share the campaign with friends and family and post about what you've been noticing and appreciating in your world to join the conversation this July

A recent study found that 74% of people in England had noticed more nature in their neighbourhoods since the Coronavirus outbreak in the UK than they would normally at this time of year, and so the RSPB can't wait to see and hear about what you've been spotting.

Sharing ideas along the way to help encourage more wildlife to your doorstep, and as lockdown begins to ease, the charity is urging its supporters to share how important nature is to them.

With people also now valuing nature and green spaces more since lockdown began, the RSPB will be on hand to provide some simple steps you can take to take action to help care for these special places in the years to come.

SEPTEMBER 2020 EDITION

DEADLINE

NOON, 7TH AUGUST



**Margaret Green
Animal Rescue**

**Dorset's best
kept *Secret***

margaretgreenanimalrescue.org.uk

**Church Knowle
Rehoming &
Visitor Centre,
Wareham
BH20 5NQ**

t: 01929 480474

Registered Charity No: 1167990

Arts & Entertainment

Purbeck Valley Folk Festival 2020

Purbeck Valley Folk Festival have announced that they are postponing their festival to 2021.

Festival Director, Catherine Burke said, "We're really disappointed and we've waited as long as we can, but we can't continue planning with no certainty that the festival can go ahead. And as things stand, we don't want to be part of the pandemic problem."

"We had been looking into options for trying to run a socially distanced festival, IF the government were to allow it, but Purbeck is so much more than just sitting watching a stage, and anything we've come up with is so far removed from our lovely little festival that it wouldn't be something that we would be happy doing."

Obviously they have had a lot of costs already this year, with advertising and the many residual costs of small businesses (accountants, websites, mailing costs, etc.) so they have launched a Crowdfunder to raise money and try to recoup some of the costs.

"Purbeck Valley Folk Festival has such a lovely community and there were so many people getting in touch, asking how they could help us out, as a small non-profit making business. We launched a Crowdfunder and we've been delighted by the support we've received so far. We reached 50% of our goal within the first week. It's been really lovely to receive so many messages of support too; so many people telling us how much our little festival means to them, and their families." said Catherine.

Please help our local small festival by supporting their Crowdfunder project - the design for this year's 'lockdown' merchandise is really cool. They have some really lovely stainless steel Purbeck pint cups, hoodies, stickers, tea-towels, tote bags and more.

Take a look here: <https://www.crowdfunder.co.uk/support-pvff>

Purbeck Valley Folk Festival will also be running an online festival over this year's festival dates (17-20 August) with some great 'live' performances from bands that would have been playing, and other competitions and fun. Take a look online: www.purbeckvalleyfolkfestival.co.uk

PURBECK VALLEY FOLK FESTIVAL
20-23 AUGUST

WEEKEND TICKETS FROM £100 INCL. CAMPING

LOS DE ABAJO
DREVER MCCUSKER & WOOMBLE
WATKINS FAMILY
ELEPHANT SESS
KATIE MATTICK
THE DANCE CARDS
THE BREATH
CUT CAPERS
PONS AELIUS
WE AFRO TALLAWAH
MONSTER CEILIDH BAND
NINEBARROW
CARRICK SISTERS
INDIA ELECTRIC CO
WARD & PARKER
SALT HOUSE
THE MAGPIES
THE MODEL FOLK
PLUS MORE!

MORE THAN JUST GREAT MUSIC...

CRAFT AREA
CROCHET - POTTERY
TIE-DYE - STONE CARVING
WILLOW WORKSHOPS
BLACKSMITH - ORIGAMI
PRINTING - CYANOTYPE
TRADITIONAL WOOD TURNING
PEBBLE PAINTING

KIDS AREA
STORYTELLING - GIANT SCRABBLE - FANCY DRESS - RHYME TIME
TOY SWAPSHOP - THEATRE & GAMES WORKSHOPS - CRAFTS
WISHING TREE - WELLY WANGING - HOOLA-HOOPING
TREASURE HUNT - SPACE HOPPER OBSTACLE COURSE
CIRCUS AREA: JUGGLING - UNICYCLING - DIABLOS - DEVILSTICKS
STILT WALKING - AEROBATICS WITH INFLATABLE TUMBLE MAT

5 STAGES - 2 CEILIDHS - OPEN MIC - SESSIONS - WORKSHOPS - POETRY - FIRE SHOWS
BEAUTIFUL LITTLE FESTIVAL ON A SMALL FARM WITH VIEWS ACROSS THE PURBECK HILLS AND CORFE CASTLE - EVERYONE'S FAVOURITE FESTIVAL

PURBECKVALLEYFOLKFESTIVAL.CO.UK

Rural Podcast Shares Extraordinary Stories



New Podcast Shares Extraordinary Stories from Rural Communities

Stories from the Sticks is a brand-new podcast featuring tales from rural communities created by Scratchworks Theatre and supported by Arts Council England.

Scratchworks has toured theatre shows to isolated communities across the South West Dorset for many years and the theatre-makers have met many wonderful characters along the way.

City-dwellers themselves, Laura, Siân and Alice have always appreciated being welcomed into remote villages to hear stories of love, history, local myth and community spirit.

"We've heard some amazing tales from people in villages across Dorset. Lockdown has turned everything upside down - we can't perform in these communities right now - so instead we're providing a platform to share their stories with the wider world." Said Laura Doble, Scratchworks Theatre



The latest episode (Episode 2) features lifelong friends, Fran and Jan from Martinstown, Dorset. This episode is full of songs and original music inspired by socially-distanced singing on the village green.

We hear tales of duck races in the river, Fran's infamous muesli pudding and the time everyone

pulled together to rescue a war veteran from the floods.

As Scratchworks say: 'Martinstown is a village with history growing out of its soil and flowing down the river. As idyllic as it sounds, there's a glimmer of mischief behind its charm.'

The interviews are interwoven with original music by Jack Dean plus narration and singing in Scratchworks' signature style, giving a distinctly theatrical feel to the podcast. The company are also keen to receive creative responses from listeners:

'We're hoping these podcasts will inspire others to get creative too. People can send in responses in any format - drawings, photos, music, short films - and we'll share them on the Scratchworks website.'

Stories from the Sticks can be downloaded from most podcast platforms including Apple, Spotify, Deezer, Pocket Casts, Stitcher and A Cast. A subtitled version is provided on YouTube.

All links can be found via www.scratchworkstheatre.com

Creative responses to the podcast should be sent to scratchworkstheatre@gmail.com





BURNGATE
STONE CARVING CENTRE

WE ARE OPEN! COME AND SEE US!



August Opening Hours: Mon - Fri: 10am - 1pm, Sat & Sun: 10am - 4pm
Join us for a cup of tea or coffee, a slice of cake or some Purbeck Ice Cream!

LOCAL ARTS & CRAFTS MARKET

Join us to browse a wide range of craft and art items for sale from many local artists and craftspeople who will be really excited to see you again after lockdown!

Refreshments available - opening hours as above.

OUR SITE IS 'COVID-SECURE' AND WE TAKE YOUR SAFETY SERIOUSLY
FOLLOW THE DINOSAUR FOOTPRINTS TO MAINTAIN SOCIAL DISTANCING!

FAMILY 'HAVE-A-GO' AT STONE CARVING SESSIONS

Tues 4th Aug, Wed 5th Aug, Thur 6th Aug, Tue 11th Aug,
Wed 12th Aug, Thur 13th Aug, Tue 18th Aug,
Wed 19th Aug, Thur 20th Aug, Tue 25th Aug,
Wed 26th Aug, Thur 27th Aug - all from 10am - 12 noon

£30 per adult, £17.50 per child. Learn the basic skills of engraving.

ADULT STONE CARVING, Sat 22nd Aug, 10am - 4pm

£80 per adult. Learn the basic skills of stone carving.

WINTER EVENING SOCIAL ARTS & CARVING GROUP

NEW! Please call for details: 6pm-8pm, every Weds night, Sept - April.

FRIENDS OF BURNGATE

Do you enjoy arts and crafts?

We're looking for new people to join our 'friends' scheme and get involved at the Centre. From welcoming visitors and helping run our tea room, to getting involved with our arts and crafts projects, we need YOU! Call us for details - we'll be delighted to hear from you!

PRE-BOOKING FOR COURSES IS ESSENTIAL AS SPACES ARE LIMITED.

CALL: 01929 439405 or email: info@burngatestonecentre.co.uk

Kingston Road, Langton Matravers. BH19 3BE. 01929 439405
info@burngatestonecentre.co.uk www.burngatestonecentre.co.uk
Registered charity: 1135118



October Blues Festival 2020 - Cancelled



Hello you Lovely Lot! I'm still at home and shielding, as many of you may be. You are all very much in my thoughts during this difficult time. I hope you are keeping safe and well, and thank you very much for the large part you play in the success of Swanage Blues Festivals.

People are asking me for guidance about the autumn event scheduled for 1st to 4th October 2020. I was hoping to hear something up to date and definite from the government but in the absence of that, I've been looking at the Guidance for Performing Arts and related information about rules and risk assessments etc.

As things stand with the emergency regulations, I can't see how we could go ahead with the festival in its usual party format: small, crowded bars and restaurants etc with no crowd control other than your good nature..

The possibility of an outdoor event, even if permitted, would be a massive and risky undertaking even if wasn't in October during a pandemic.

It pains me to say that it's probably better to give the October festival a miss and see what the future brings... we'll look forward to hopefully seeing all the Blues fans back with us for our March 2021 festival!

With very best wishes, Steve Darrington.

Email: info@swanage-blues.org Pics by DubbleXposure.



Hall & Woodhouse Dorchester Literary Festival



Helen Baggott (pictured, left), a well-known local writer who lived in Swanage for thirty years, has been long-listed for the popular Hall & Woodhouse Local Writing Prize, run by the Dorchester Literary Festival.

"I am delighted to have been long-listed for my book 'Posted in the Past'." says Helen. "Researching and writing a book that resonates with so many readers and is now being recognised in this competition is wonderful. There seems to be a real interest in genealogy, heirlooms, ancestry and social history, and

Posted in the Past seems to connect all these topics." 'Posted in the Past' reveals the true stories from postcards sent more than a hundred years ago. Even the routine messages of train arrivals and coughs and colds are transformed by the research into the lives and times of our ancestors. The man who helped prepare Lord Kitchener's last meal, a doctor who cared for Edward VII and a ten-year-old servant girl are all discovered through

postcards. "Although I now live in Sturminster Newton, I still have family in Swanage – my roots go back centuries in the area with the quarrymen of Purbeck. Over the past year I've returned to Swanage many times and to speak for the museum and library – the library of my childhood."

"In a world currently dominated by postponements and cancellations, we're pleased that we've been able to keep the prize going," says Paul Atterbury, who runs the Dorchester Literary Festival with Janet Gleeson. "Now in its third year, the prize attracted entries which were, if anything, more diverse than ever, and it's great to see so much talent still flourishing around us."

The Prize Ceremony, where the winner will be awarded £1,000, is currently scheduled for the 5th October and will be held at the Duchess of Cornwall in Poundbury. "Although, of course, everything is a moveable feast at present," says Paul. "We're still very much working towards the Literary Festival taking place and will do all we can to ensure it's a safe environment for everyone."

The long-listed authors are, in alphabetical order:

Gail Aldwin – The String Games
Helen Baggott (pictured) – Posted in the Past
Ann Biggins – Losing Jane
Viv Endecott – Exploring Englishness
Cathie Hartigan – Notes from the Lost
Brent Shore – Blessed are the Meek

Health & Beauty

Matron's Round - Our Local Hospitals' Monthly Column

This month I would like to update you on the changes that Covid-19 has made to the way patients access two of our services. These changes will remain in place for the foreseeable future.

The Minor Injury Unit at Swanage Hospital no longer offers a drop-in service. If you have a minor injury, please call us on 01929 422282. Your details will be taken and you will speak to one of our specialist nurses who will give you telephone advice. If you then need to be seen face to face they will make an appointment for you, or re-direct to an appropriate service.

If you have Covid-19 symptoms for example cough, fever, loss of taste or smell, please do not telephone the hospital. Instead go online to <https://www.nhs.uk/conditions/coronavirus-covid-19/> or contact 111.

If your condition is life-threatening e.g. chest pain, severe shortness of breath, heavy blood loss or loss of consciousness then dial 999 for an ambulance.

Another change is in accessing our physiotherapy service. Aches and pains can cause frustration and worry and impact on your daily activities. In most cases you can treat these yourself in your own home, with the right guidance.

The new Dorset MSK Physiotherapy website (www.msksdorset.nhs.uk) explains common complaints and provides strategies to guide your

recovery and management of symptoms. Exercise programs with pictures and step-by-step guides are available on the site. There is also a variety of links to resources which provide you with additional information and support.

If after following this guidance symptoms still persist, there is an online self-referral option which allows you access to any physiotherapy department across the county simply by selecting your GP practice and preferred physiotherapy team.

Once your referral reaches us, it will be triaged by an experienced clinician and an appointment offered by telephone or video.

Following the initial assessment, if the clinician feels it is necessary to see you in person they will arrange an appointment at Wareham Hospital. We regret that we are currently unable to offer face to face appointments for all patients.

We thank you for your kind understanding during this time.

Until next time, take care, Matron Donna.



Swanage Hospital Minor Injuries Unit - Open 7 days a week from 8am - 8pm

If you have an injury, we're here to treat it!

Call us on 01929 421329. We're here for YOU, so use our services!



Home visit hearing care across Purbeck
Call today to book your appointment
t: 01202 511386
e: info@keytohearing.co.uk
w: www.keytohearing.co.uk



Keeley Salmon RHAD MSHAA

SHIATSU

Japanese Acupressure Therapy

by
Nichola Morgan
B.A. Dip. Seitai Shiatsu (Japan)
For Wholeness & Wellbeing

SWANAGE (01929) 427289



CHIROPODY

Rachel Ciantar


Home Visits & Clinic Appointments

**Comprehensive foot care - Diabetic Patient's Care
Biomechanics & Orthotics**

Registered with Society of Podiatrist & Chiropractors, HPC Registered

Contact 07979 840542

NEW PATIENTS £5 OFF FIRST TREATMENT



West Dorset Mobile Foot Clinic

Nail Cutting, including Diabetic Feet, Cracked Heels, Fungal Infections,
Corns, Calluses, Medical Pedicures, Warm Wax Therapy, (For Foot & Joint Pain).

07903 722542 Roy Fox
07712 525058 Christine Fox

www.westdorsetmobilefootclinic.com

Video Call Support Offers Lifeline

Thousands of Dorset residents forced to stay home by the COVID-19 pandemic are being treated online through a new video consultation system. Dorset HealthCare is at the forefront of NHS trusts using 'Attend Anywhere' to provide care, support and advice to patients who can't attend a hospital or GP surgery due to lockdown restrictions. Since the end of March, the Trust has provided more than 6,300 online consultations for services ranging from mental health and learning disabilities to pain management, minor injuries, physiotherapy and sexual health.

While the system had been trialled in Dorset for several months, it has really proved its worth since COVID-19 hit the UK. Attend Anyway allows people to see a clinician via a secure, pre-arranged video call. You simply

enter an online waiting area at the agreed time, via a dedicated web link on their computer, smartphone or tablet. The clinician is notified when you arrive, and joins the consultation when ready. You don't need to set up any kind of user account - you just click the 'start video' call button on the service's web page (or via a link in an email or text message you have been sent) and follow the prompts. Any personal information provided on entry is not stored after the consultation has finished.

Attend Anywhere can be used anywhere with good internet connection. All you need is a Chrome or Safari web browser and a web camera on your device. For more information on how to use the system and which services offer it, plus links to the individual 'waiting rooms', go to www.dorsethealthcare.nhs.uk/attend-anywhere

Simon's Wax and Relax
The No.1 Place for Waxing or Trimming



Tel. 07517 652395
Email: info@simonswaxandrelax.co.uk
Web: simonswaxandrelax.co.uk

The Little Shop Of Calm

6 West Street, Wareham, Dorset. BH20 4JU
Wellness to the Heart of Wareham



Organic Skincare & Wellbeing Products are available online and for collection
MASSAGE THERAPY BACK SOON!
Visit our website: www.littleshopofcalm.co.uk for details

Risky Behaviour! Condoms Donation....

RISKY BEHAVIOUR: OVER HALF OF BRITS ADMIT THEY WON'T USE PROTECTION ONCE THE PUBS OPEN

LELO wants to stock the nation's pubs with free condoms to combat Brits risky sex exploits post-lockdown. 60% of Brits admit they will not use protection to prevent contracting and transmitting STIs after lockdown fully relaxes

Intimate lifestyle brand LELO will donate 1000s of HEX Condoms to pubs across the nation ahead of reopening, to prepare for the surge in risky behaviour. To ask for free condoms all pubs need to do is email release@thisiscow.com

13% of Brits said they wanted to have sex within an hour of restrictions being lifted - Over half of Brits say they have never even been tested for an STI (63%)

Since lockdown began back in March 2020, Brits have been forced into curbing any risky sex exploits, but according to new research released by intimate lifestyle brand LELO, 60% of Brits admit they will not use protection following the restrictions after lockdown ends*. In fact, 13% of Brits said they want to have sex within the hour of being allowed out and pubs opening, with a further 13% admitting to wanting sex within twenty-four hours.

Off the back of this, and to help combat the prevention and transmission of STIs in the UK, LELO is donating thousands of their bestselling LELO HEX Condoms to the nation's pubs. Condoms are incredibly effective at preventing most STI's when used correctly. The intervention couldn't be more timely, considering over half of Brits say they have never even been tested for an STI (63%).

To help ensure the nation practices safe and satisfying sex, LELO HEX condoms were designed with pleasure at the forefront, delivering strength, thinness and sensation through its revolutionary hexagonal structure.

Sexpert at Lelo, Kate Moyle commented: "We found these figures incredibly worrying, especially when we consider that many sexually transmitted infections are symptomless, which highlights the importance of testing even when you feel fine. Left untreated, some STIs can impact more long-term health, such as future fertility and the ability to get pregnant. With this in mind, it seems the risks really do not outweigh the benefits of using condoms which are the most reliable form of contraception for protecting against both unwanted pregnancy and STI's, which when used correctly don't detract from the enjoyment of sex."

Pubs can apply to receive Hex Condoms at Release@thisiscow.com

ARE YOU SUFFERING FROM PAIN OR DISCOMFORT?

We can help to heal your:
Back & neck pain..Sciatica..Tension..Headaches..Arthritic pain
Frozen Shoulder..Sports Injuries..Muscle Strains..Repetitive Strains
Poor Posture & much more
Practices based in Swanage & Wareham



01929 766008
Guy Ryder
Registered Osteopath
www.purbeck-osteopathy.co.uk

Our teeth need healthy Gums to survive a Lifetime

Diseased Gums seriously affect our General Body Health, as well

CHECK OUT YOUR GUM HEALTH SOON



FREE 30 minute Specialist Periodontics Consultation offered - if you mention this advert!

deWaal Specialist Periodontics
MouthPeace Dental in WOOL, Dorset.
Tel: 01929 462269.
Email: Wool@MouthPeace.com
www.Specialist-Periodontics.com

WAREHAM PHYSIOTHERAPY

HELEN GORDON, MCSP. HCPC registered 

NOW BACK IN THE CLINIC!

Effective treatment from experienced chartered physiotherapists for spinal, limb, joint & muscle pain, sciatica, arthritic pain, whiplash, sports injuries & postural problems

CONTACT: 07765 129786
www.warehamphysio.co.uk

Spotlight Event Diary

Diary Entries are FREE if your event is FREE. If you charge, then it's £5 plus VAT per entry, per month. DEADLINE for MAY is noon, 10th APRIL

KEY: * = Start time not known or n/a; Ffi = for further information; Sw = Swanage; Wm = Wareham; VH = Village Hall, Telephone code 01929 unless otherwise stated.

SEPTEMBER 2020

WEEKLY EVENTS

Please call prior to attending events listed to ensure they are still on!

EVERY MONDAY

- 09.00 **U3A Table Tennis Group** meet at Harmans Cross VH.
- 09.30 **Under 2.5 years old group.** Till 11am. at Parish Hall, Wm.
- 09.45 **Toddler Club** URC, Sw. Till 11.15
- 10.00 **Table Tennis Club** Sw FC All ages/abilities £2.50 Till noon. 480093
- 10.30 **Flowers with Liz** at the Purbeck Workshop in Wool. The Workshop provides craft activities free of charge to those touched by cancer - friends and family are welcome too. Unit 6, Woolbridge Business Centre, East Burton Rd, Wool. BH20 6HG. www.purbeckworkshop.org 07757 776907. Email: richris95@gmail.com
- 13.00 **Play and Learn** at Wareham's Children's Centre, Streche Rd, Wm. Till 2.45pm
- 13.00 **Under 1s and Tums** at Chapel Lane, Swanage. Till 3pm
- 14.00 **Pins and Needles** at Harmans Cross VH.
- 14.00 **Swanage Digital Champions.** Support people in the community to use the internet and gain basic online skills. Booking essential on 01929 423485.
- 14.00 **Wareham Short Mat Bowls.** Meet at Furzebrook Village Hall. New members welcome to come along and meet us!
- 14.00 **Swanage Disabled Club** meet until 4pm. Meeting place alternates between Catholic Hall & Queensmead Hall, Sw. Transport available. Call Mrs Daphne Saville on 01929 425241 ffi.
- 16.00 **Colour Me Happy.** Adult colouring session at Swanage Library. Drop in.
- 16.45 **Soccer Skills** Sw FC First Sch chldn £1 Till 5.45. 425175
- 18.00 **Lesbian and Gay Friendship Group** meets every Monday evening for social events and shared interests, such as meals, walking and outings. Ffi: contact Karen via email: outinpurbeck@gmail.com
- 18.00 **Swanage Tennis Club** at Beach Gardens, Sw. Free Cardio Tennis taster. Till 7pm
- 18.00 **Swanage Tennis Club** at Beach Gardens, Sw. Free Matchplay taster session for prospective new members. First 3 sessions are free. Until 8.30pm.
- 19.00 **Wareham Choral Society** meet URC Meeting House, Church St, Wm. Till 9. New singers always welcome.
- 19.00 **Swanage Youth Club.** School year 10 and upwards. Till 9.30pm
- 19.00 **Whist.** Come & join us at the Reading Room, Church Hill, Swanage. Ffi, call 07984 968733
- 19.00 **Purbeck Chess Club.** Mortons House Hotel, Corfe Castle. Ffi, call Steve Peirson on 01929 552504.
- 19.30 **Purbeck Quire** rehearse at Wm Methodist Church. New/visiting singers (no audition necessary). String & wind players also welcome. Ffi: 423505 or 480737.
- 19.30 **Wareham Art Club Workshop** at Wareham Parish Hall.

Ffi: 553718.

- 19.30 **Wm Folk Dance Club** Stoboro' VH. All welcome. 552763/551029
- 19.30 **Swanage Air Cadets** meet at Air Training Corps HQ, Court Road, Sw. Cadets age 12+. Ffi: email: oc.2185@aircadets.mod.
- 20.00 **DARTS** at the RBL Club, Sw.
- 20.00 **Herston Hall Management C'ttee Bingo**
- EVERY TUESDAY**
- 09.00 **Swanage Tennis Club** at Beach Gardens, Sw. Free Cardio Tennis taster. Till 10am
- 09.30 **Isle of Purbeck Arts Club.** Painting and sketching. At the Catholic Church Hall, Rempstone Rd, Sw. Till 1pm. Outdoors in summer. Ffi: Gina on 421689.
- 09.30 **Well Baby Clinic** at Chapel Lane, Swanage. Till 11.30am.
- 09.30 **Kiddies Corner Mother & Toddler Group** (term time only) No fee - donations welcome. Purbeck Gateway Church. 551415
- 09.30 **Wareham Art Club Workshop** at Wareham Parish Hall. Ffi: 553718.
- 09.30 **First Steps Parent & Toddlers' Group.** Swanage Methodist Church till 11.30am during term time. Ffi: Sylvia Garrett 425420, office hours.
- 10.00 **Men & Women's Mixed Walking Football Club** at Swanage Football Club. Come and try! All levels welcome, even if you've never played before. Come and join in or just come along to watch a very friendly group of people playing football. Until 11.30am. Call Nick on: 07745 907509
- 10.00 **Swanage Tennis Club** at Beach Gardens, Sw. Free Matchplay taster session for prospective new members. First 3 sessions are free. Until 11.30am.
- 10.00 **Wareham Croquet Club** meet at the Recreation Ground until 5pm. New members and visitors welcome. Call Tony on 01929 550190 or Lesley on 01929 553927 or email warehamgolfcroquetclub@hotmail.com
- 10.00 **Sandford Toddlers** at Sandford Community Hall, till 11.30am.
- 10.00 **Short Tennis** at Sw FC All ages & abilities £1.50 Till noon. 425175
- 10.00 **A Place Of Welcome** at 21 Commercial Road, Sw. Friendly drop-in for everyone, providing a free cup of tea or coffee, a listening ear, conversation and basic information. Everyone welcome, whatever the circumstances.
- 10.20 **Adult Dance Classes.** Modern Line dance. Until 11.20am. At The D'Urberville Centre, Wool. Ffi: 01202 243803 or see: www.purbeckdancestudio.co.uk
- 10.30 **Employment Hub at Swanage Library.** Until 12.30pm. Book via Skilla dn Learning on 01202 262300.
- 10.30 **Swanage Walking for Health Group** starter walks (15-30mins). Start from the Mowlem Shelter on Swanage

- Seafront. Get back into the swing of things gently! Ffi: 481000
- 10.30 **Wareham Walkers.** Convivial health walks for mainly older people, of up to two hours in and around Wareham, ending with coffee at a local tea room or pub. Ffi: www.wareham-walkers.org.uk or call 552933.
- 12.00 **Nature Tots** (0-4yrs) at Bovington Memorial Hall Garden. Until 2pm.
- 14.00 **Wareham Short Mat Bowls.** Meet at Furzebrook Village Hall. New members welcome to come along and meet us!
- 14.00 **Swanage Walking for Health Group.** Walks of 60-90mins, various locations. Walks are very social, for a range of abilities. Walks start from car parks at Studland, Corfe, Arne, Durlston, Langton, Acton, Worth and Kingston. Ffi: 481000.
- 14.00 **Swanage Town Walk.** Local historian takes walks lasting 90 minutes. Meet outside the Museum in the 'Square'. No charge but voluntary contributions welcome.
- 14.00 **Harman's Cross Village Hall Art Group** Till 5
- 18.00 **Sw Youth Centre Girls' Night** (Yr 8+) Till 10
- 18.15 **Sw Cricket Club** Practice till 8.30pm
- 18.30 **Sw Bridge Club** Mowlem Community Room. 421840
- 19.00 **Wareham Air Cadets** meet at Air Training Corps HQ, St Martin's Lane, Wm. Cadets age 12+. Ffi: email: oc.2185@aircadets.mod.
- 19.30 **Swanage Group of Alcoholics Anonymous** meets at Swanage Day Centre, High Street, Swanage. If you want help to stop drinking, you are welcome. Or call 01202 296000 for more details.
- 19.30 **Women's Walking Football Club** at Swanage Football Club. Come and try! All levels welcome, even if you've never played before. Come and join in or just come along to watch a very friendly group of people playing football. Until 9pm. Call Nick on: 07745 907509
- 19.30 **Sw & Langton Folk Dance Club** Langton VH. Ffi: 421913
- 19.00 **Belvedere Singers** rehearsal at St Mark's CE VA Primary School, High St, Sw. Parking on-site. Till 9pm. All singers welcome! 423350.
- 19.00 **Give Rugby A Try! FREE!** at Swanage & Wareham Rugby Club, Bestwall Rd, Wm. We're looking for new players, so come and have a go! Until 9pm. Over 18s only. Call John C. on: 07970 500357 Ffi.
- 20.00 **Carey Hall, Wm Bingo**
EVERY WEDNESDAY
- 09.00 **St Mark's Toddlers Group**, St Mark's Church, Swanage. Herston, Sw Till 11am
- 09.45 **Corfe Wool Workshop** Corfe VH, East St. Members £1.50; non-members £2.50. Till 12.00. 427067
- 10.00 **Short tennis for adults at Swanage Football Club.** All welcome. Equipment supplied. Till noon.
- 10.00 **Breast Feeding Group** at Wareham's Children Centre, Streche Rd, Wm. Offering peer support and breastfeeding counsellor advice. Till 12 noon. Ffi: 552864
- 10.30 **Adult Dance Classes.** Modern Line dance. Until 11.30am. At St Edward's Church hall, Swanage. Ffi: 01202 243803 or see: www.purbeckdancestudio.co.uk
- 10.30 **Play and Learn at Kids of Wool** (BH20 6DY) until 12 noon.
- 10.30 **Books and More** - at Swanage Library. Reading & discussion group.
- 13.00 **Studland Toddler Group** at Studland Village Hall until 2.30pm.
- 14.00 **Herston Senior Citizens** meet Herston Hall, Jubilee Rd, Sw. All welcome
- 14.00 **Health Qigong: Fitness and relaxation.** Till 3pm. With Penny at the Mowlem Community Room, Sw. Ffi 07969925502
- 14.30 **Local Historian takes you on a town walk** around Swanage, lasting 1 1/2 hours. No need to book, just turn up in the Swanage Museum in the Square, voluntary contributions welcome.
- 15.00 **Extend Exercise Class**, now at Morton Village Hall. To improve strength, balance and flexibility. All welcome. Donations welcome. Ffi: 471490.
- 16.15 **Swanage Football Club U-7s** Training til 5.15pm. £1. Ffi: 426346
- 17.15 **Swanage Football Club U-9s** Training til 6.15pm. £1. Ffi: 426346
- 18.00 **Swanage Tennis Club** at Beach Gardens, Sw. Free Cardio Tennis taster. Till 7pm
- 18.00 **Swanage Youth Club.** School years 7&8. Till 8.30pm
- 18.00 **Table Tennis** at Harmans Cross Village Hall. All ages & abilities welcome. Coaching given. Till 8pm or later. Ffi: 424591
- 18.30 **Sw & Wm Hockey Club Junior (6-14yrs)** Training, Wm Sports Centre. Until 7.30pm. Email: swanagewarehamhockey@outlook.com
- 19.00 **Wm Bridge Club** at the Library, South St. 552046
- 19.00 **Swanage Depression Support** group. We meet on the 1st and 3rd Wednesday each month at the Lower Hall, Salvation Army, Kings Rd East, Sw. BH19 1ES, until 9pm. Ffi: Nick on: 07766352062 or email: nickviney@hotmail.com or call Mary on: 01929426896.
- 19.00 **Wareham Depression Support** group. We meet on the 2nd and 4th Wednesday each month at Not Just Sundaes, South Street, Wareham. BH20, until 9pm. Ffi: John: 01929556315 or 07871 727278 or email: johnoneil905@yahoo.co.uk
- 19.00 **Swanage Town Band** meet for our weekly practice in the Council Chamber, Swanage Town Hall. New musicians warmly welcomed. Please call David Cook (musical Director) for further information on: 01929 422909.
- 19.00 **Give Rugby A Try! FREE!** at Swanage & Wareham Rugby Club, Bestwall Rd, Wm. We're looking for new players, so come and have a go! Until 9pm. Under 16s-18s only. Call John P. on: 07725 567541 Ffi.
- 19.00 **Purbeck Runners** meet at Beach Gardens Pavillion, Sw.
- 19.30 **Swanage Musical Theatre** meet Swanage Bay View Complex Rehearsal Room. All welcome. Ffi: 426161
- 19.30 **Sw & Wm Hockey Club (13+ years)** Training, Wm Sports Centre. Till 9pm. Email: swanagewarehamhockey@outlook.com
- 20.00 **Sw Youth Centre Club Night** (Yr 9+) Till 10
- 20.15 **Dorset Buttons Morris Practice.** URC Hall, Wm. 423234/421130
- 20.30 **Wm Swimming Club Adults.** All standards + stroke improvement. Till 10
- 22.00 **Sw Youth Centre Club Night** (16+) Till 11.59
EVERY THURSDAY
- 08.30 **Swanage Tennis Club** at Beach Gardens, Sw. Free Cardio Tennis taster. Till 9.30am.
- 09.00 **Carey Crafters** meet every Thursday at Carey Hall, Mistover Road, until 12.30pm (come anytime between). No age or gender restriction. All crafts welcome we have a wide variety!. Come along and share your craft or learn a new one! Contact Donna on 07870 993311 or Helen

- on 07368 352737 ffi.
- 09.00 **Swanage Painting Club.** Catholic Church Hall, Rempstone Rd, Sw. Friendly group. New members including beginners welcome. Till 1pm. Ffi: Jane on 01929 427078
- 09.30 **Play and Learn** at Chapel Lane, Swanage, till 11am.
- 09.30 **Well Baby Clinic** at Streche Road, Wareham, until 12 noon.
- 09.30 **Swanage Tennis Club** at Beach Gardens, Sw. Free Matchplay taster session for prospective new members. First 3 sessions are free. Until 11am.
- 09.30 **Sensory Play** for under ones, at Bovington Centre until 10.30am
- 09.30 **Adult Dance Classes.** Latin American & Ballroom dance. Until 10.30am. At the Wareham Scout & Guide Hut, N. Bestwall Rd, Wareham. BH20 4HX. Ffi: 01202 243803 or see: www.purbeckdancestudio.co.uk
- 10.00 **Wyvern Savings & Loan Credit Union** opens until 12 noon at Not Just Sundaes, South Street, Wareham, opposite the Library. A secure place to save and loans available at fair rates. Call in for a cuppa and a chat, or call 01305 268444.
- 10.00 **Wm Parent & Toddler Group** During term Parish Hall, Quay Till 11.45. 556806
- 10.00 **Wool Country Market** D'Urbeville Hall. Cakes, preserves, plants, crafts, vegetables. Coffee & biscuits available.
- 10.00 **Tea, Coffee, Biscuits** at Queensmead Hall, Sw. Til 11am. Adm 50p
- 10.00 **Volunteer Centre Drop-In** at Wareham Library till 12pm. Find out about volunteering to support community groups & charities.
- 10.00 **Wareham Croquet Club** meet at the Recreation Ground until 5pm. New members and visitors welcome. Call Tony on 01929 550190 or Lesley on 01929 553927 or email warehamgolfcroquetclub@hotmail.com
- 10.15 **Chess** at the Cafe Tratt, Lower High Street, Swanage (from 8th February 2018). Call in for a friendly game of chess and a chat. All welcome.
- 10.30 **Mid-Week Market Morning Service** URC, Church St, Wm. Prayer requests to Revd. Simon Franklin 556976
- 10.30 **Woodworking** with Bernard and Terry at the Purbeck Workshop in Wool. The Workshop provides craft activities free of charge to those touched by cancer - friends and family are welcome too. Unit 6, Woolbridge Business Centre, East Burton Rd, Wool. BH20 6HG. www.purbeckworkshop.org 07757 776907. Email: richris95@gmail.com
- 11.00 **Sensory Play** for 1-4yrs old at Bovington Centre, until 12 noon.
- 13.30 **Under 1 year olds** at Wareham's Children's Centre, Streche Rd, Wm. Anti-natal mums welcome. Till 3pm. Ffi: 552864.
- 13.00 **Wareham Area Men's Shed** meets at Purbeck Connect, Sandford Lane, Wm. Ffi: call Chris on 554758, Harold on 792591 or Mike on 288045
- 13.30 **Toddler Group.** All Saints' Church, Sw. 423937. Till 3pm (Term times)
- 14.00 **Swanage Town Walk.** Local historian takes walks lasting 90 minutes. Meet outside the Museum in the 'Square'. No charge but voluntary contributions welcome.
- 14.00 **Wareham Happy Cafe.** Friendly conversation, talks, activities and some fun to put a spring in your step! Everyone welcome. Held at the Not Just Sundaes Cafe in South Street, Wareham. BH20 4LU. From 5th March 2020 onwards. FREE. Until 3.30pm.
- 14.00 **Studland Chair-based Exercise** in the Village Hall, Studland. Ffi: Julie on 558139 or email: jbrad@uwclub.net
- 14.15 **Sw Over-60s** Meet in the Rectory Classroom, Swanage, Sw. All Welcome.
- 17.45 **Swanage Youth Club.** Learning Difficulties and disability (age 11-25) night. Till 7.30pm
- 18.00 **Isle of Purbeck Arts Club.** Weekly evening Art Group. Aimed at beginners, at Purbeck New Wave Gallery, 25 Commercial Rd, Sw. BH19 1DF. till 9pm.
- 18.15 **Sw Cricket Club** Practice till 9pm
- 18.30 **Swanage Sea Rowing Club Circuit Training** at Swanage Middle School. Ffi: 07776 201455
- 19.00 **Health Qigong: Fitness and relaxation.** Till 8pm. With Penny at Furzebrook VH, Wm. Ffi 07969925502
- 19.00 **Over 40s Men's Walking Football Club** at Swanage Football Club. Come and try! All levels welcome, even if you've never played before. Come and join in or just come along to watch a very friendly group of people playing football. Until 8.30pm. Call Nick on: 07745 907509
- 19.00 **Purbeck Gateway Club** meets at Wareham Youth Centre until 9pm. Purbeck Gateway is a club for adults with learning difficulties. We meet during term time and have fun! All welcome. Ffi: Lew on 552173. Email: Lewisbell1@aol.com
- 19.15 **Wm Town Band Brass & Woodwind** players welcome. 551478/01202 242147
- 19.30 **Short Mat Bowls** in the Durbeville Hall, Wool. All standards welcome, till 9.30pm. Ffi: 552682
- 19.30 **Purbeck Arts Choir** meet for rehearsals, with conductor David Fawcett, at St Mary's School, Northbrook Road, Swanage. Sept-May. All welcome. For more information please phone Liz Roberts 01929 481419
- 19.30 **Swanage Youth Club** Youth Action (year 7 - sixth form). Till 9.30pm
- 20.00 **Herston Hall OAP Committee Bingo Sw**
- EVERY FRIDAY**
- 08.45 **Coffee @ 112 - Drop In For Coffee!** Catch up with friends at 112 High Street (United Reformed Church) in Sw. Cake and bacon butties. Fair trade stall. Donations for 'Besom in Purbeck' and church funds.
- 09.00 **Swanage Tennis Club** at Beach Gardens, Sw. Free Cardio Tennis taster. Till 10am
- 09.30 **Health Qigong: Fitness and relaxation.** Till 10.30am. With Penny at Furzebrook VH, Wm. Ffi 07969925502
- 09.30 **Wareham Area Men's Shed** meets at Purbeck Connect, Sandford Lane, Wm. Ffi: call Chris on 554758, Harold on 792591 or Mike on 288045
- 09.30 **Little Fishes Baby and Toddler Group.** Catholic Church Hall, Rempstone Road, Swanage. Term time only. Until 11.30am. Ffi: Alex on 07904 412067.
- 10.00 **Table Tennis Club** Sw FC All ages/abilities £2.50 Till noon. 480093
- 10.00 **A Place Of Welcome** at 21 Commercial Road, Sw. Friendly drop-in for everyone, providing a free cup of tea or coffee, a listening ear, conversation and basic information. Everyone welcome, whatever the circumstances.
- 10.30 **Do you want to volunteer in Swanage?** Meet the team at the Volunteer Bureau in Swanage Library! Until 12.30pm.
- 11.00 **Swanage Library Rhyme Time**, ages 0-4, until

- 11.30am.
- 11.00 **Toddler Time** For Under 5s And Carers. Wareham Library. Stories, songs and crafts. Every Friday, including school holidays. Ffi: 01929 556146
- 14.00 **Wareham Short Mat Bowls.** Meet at Furzebrook Village Hall. New members welcome to come along and meet us!
- 14.30 **Short Mat Bowls** at Durbeville Hall, Wool. Till 4.30pm. All standards welcome. Ffi: 552682.
- 18.00 **Swanage Tennis Club** at Beach Gardens, Sw. Free Matchplay taster session for prospective new members. First 3 sessions are free. Until 8.30pm.
- 18.00 **Purbeck War-Game & Model Club.** Royal British Legion, Sw. 426096.
- 18.00 **Sw Youth Centre Club** 12-13 (Yr 7-9) Till 8
- 18.00 **Purbeck Youth Choir** at the United Reformed Church Hall, Sw. 8-18 years old. Till 7pm. Ffi: Jay Buckle on: 07947 866945
- 18.30 **Sw Bridge Club** Mowlem Community Room. 421840
- 19.00 **Sw Youth Centre Seniors Club Night** (Yr 9+) Till 9.30pm.
- 19.30 **Short tennis** for adults at Swanage Football Club. All welcome. Equipment supplied. Till 9.30pm. £3.
- 19.45 **Alcoholics Anonymous Wareham.** Talk and tea from 19.15, meeting from 19.45 until 21.00. At Wareham Day Centre, 21 Bonnets Lane, Wareham. BH20 4HB. If you think you may have a problem with alcohol, you are welcome. You can learn about living sober from people who do. The first Friday of each month is also open to professionals and friends/family of problem drinkers. Ffi: 01202 296000.
- 20.00 **Sw Youth Centre Live Bands** (as advertised) Till 10pm.
- 22.00 **Sw Youth Centre Late Session** (Yr 9+) till 11.59pm (members free)

EVERY SATURDAY

- 08.00 **Purbeck Runners** meet at the Mowlem, Sw. 4/5 mile run.
- 09.00 **Sw CC U11 - U15 Practice** till 10.30
- 09.30 **Sw CC U9 & U10 Practice & Kwik Cricket** till 10.30
- 10.00 **Tea, coffee and home-made cakes** in the Parish Hall on Wareham Quay during the Community Market. Till 2pm. Bric-a-Brac stall weekly. Christian bookstall most weeks. All welcome for a warm-up and a friendly chat.
- 11.00 **Lego and Megablok Mayhem** at Swanage Library, until 12 noon.
- 20.00 **Herston OAP Committee Bingo** at Herston Hall, Sw
- ### EVERY SUNDAY
- 09.00 **Purbeck Runners** meet at the Mowlem, Sw. 8+ mile run.
- 10.00 **Arts and Crafts Market** at the Mowlem in Swanage. A wide range of local art for sale, including pottery, glass, cards, fabric and much more! To book your table, or for more information, call Tony on 01929 421321.
- 10.00 **Give Rugby A Try! FREE!** at Swanage & Wareham Rugby Club, Bestwall Rd, Wm. We're looking for new players, so come and have a go! Until noon. Under 6s-16s only. Call Claire on: 07799 842225 Ffi.
- 10.30 **Stoborough Emmanuel Baptist Church** meet at Stoborough First School, Stoborough. All very welcome.
- 13.30 **Swanage Tennis Club** at Beach Gardens, Sw. Free Cardio Tennis taster. Till 2.30pm
- 14.30 **Swanage Tennis Club** at Beach Gardens, Sw. Free Matchplay taster session for prospective new members. First 3 sessions are free. Until 4.30pm.
- 19.00 **Quiz Night with cash prizes** at the Red Lion, High Street, Swanage. All welcome - come along and see if you can win the prize pot!

LOCAL TRADE ADVERTISING

Purbeck Chimney Sweep

TEL: 01929 423244
MOB: 07974 809779

ICS Always happy to help and advise

TERMINATOR PEST CONTROL

WASPS • BEES • FLEAS • RATS
MICE • ANTS • SQUIRRELS • BIRDS

All Purbeck areas covered
01929 554898
MOBILE: 07831 351877

BINDON ABBEY SCAFFOLDING

WOOL - WAREHAM

Reliable service and competitive pricing
T: 07501 465192
Email: bindonabbeysc scaffolding@outlook.com

J.A. CONSTRUCTION
(DORSET) LTD.

Specialist in Purbeck Stone Walling
General Building, Extensions,
Renovations, Roofing, New Builds
and all types of Ground Work.
Also available for Plumbing,
Electrics & Carpentry.

Tel: 01929 554249
Fax: 01929 552294

Mobile: 07973 388190
www.jaconstructiondorset.co.uk
Email: sales@jaconstruction.co.uk

DIGITAL AERIAL UPGRADES

*SKY & FREESAT INSTALLATIONS
*LCD/PLASMA SALES & REPAIRS
*WALL MOUNTING & INSTALLATION SERVICE

For simply a better service contact
REPAIRLINE
7 WEST STREET WAREHAM
Members of **Checkatrade.com** 01929 554692
Where reputation matters

Carpet & Upholstery Cleaning

Highest standards guaranteed
Fully certified & insured
No hidden charges & no VAT
Call Steve at **Pile-Up** on
01929 553861 or **07974 529017**

JIM BAGGLEY BUILDING SERVICES Ltd

Renovations,
Alterations,
Extensions,
Kitchen Fitting,
New Cut Roofs,
Loft Conversions,
Upvc Windows & Doors,
Carpentry & Joinery

Tel: 01305 852311 or 07469 793452
Email: jessjimbaggleyltd@gmail.com

FMB
The sign of building quality

SEPTEMBER edition deadline: Friday 10th August 2020

LOCAL TRADE ADVERTISING

Whizzbits

Computer Sales & Support

Virus/Spyware removal • Upgrades & repair
Networking • Windows problems fixed
Wireless set-up • Internet & e-mail

Tel: 01929 421989 or 07900 992110

Call Pete for a prompt & reliable service



Colin Mowbray

Gas Installer

Plumbing, Heating & Tiling

01929 550160 / 07790 056396



Central Heating, Plumbing, Boiler Servicing
Bathrooms & Showers, Unvented Systems

PROPOINT

Call for a realistic quote 01929 421663

07768 660833



Re-pointing roofing

Wall tie replacement

Cavity cleaning

Tray & lintel replacements

facias & Guttering

WAREHAM GAS SERVICES

For all your plumbing & heating requirements

Servicing of appliances available

Contact Steve:

07714 386457 or 01929 288521



KDL PLUMBING & HEATING

Immersion heaters, cylinders, cold water tanks,
ballvalves, taps, showers, bathrooms, radiators,
heating problems and more!

FREE ESTIMATES & ADVICE - NO CALL OUT CHARGES

Mobile: 0747-512-8249 or 01929 448548

ALL AREAS SERVED

OVEN & WASHING MACHINE REPAIRS

and other appliances

Washing Machines, Dishwashers,
Tumble Dryers, Electric Cookers,
Fridges, Freezers.

Colin Shailer.

01929 554809 07711 165062

colinshailer@gmail.com



CMS Electrical Repairs

DIRTY OVEN!

Clean Ovens Domestic Ltd

DOMESTIC OVEN CLEANING

NON caustic, fresh solution every time.

Hobs, Extractors and Microwaves

Covering the Whole of Dorset

PHONE 0800 707 6629

SOOTY THE SWEEP

Local Full Time Chimney Sweep for 30 years

Nacs, Hetas, City & Guilds Qualified

Be safe! Reliable Advice Given

Covering All of Dorset

All chimneys and flues swept

Woodburner Servicing

Cowls, bird nets, pots, etc.

Stoves, liners, grates, fire tools

Kiln dried LOGS, CCTV Surveys

Insured and certificates given.



01929 554700/427427

www.sootythesweep.com



It's really rather simple you know.

If you are looking at this space,
then so are your potential customers.

Book your trade ad now, there's a
good chap.

Please call 01929 424239. Quite.

MALLWOOD ROOFING LTD

Family business - all aspects of roofing, including:

Built-up Felt, Cold Applied Liquid System
Slatting & Tiling

All new roof coverings fully guaranteed

TEL: 01202 020063

or 07950 972289

Checkatrade.com



Established in Purbeck since 1952

- SPECTUS. PVC-U Aluminium & Timber Framed Windows
 - Doors • Patio Doors
 - BI-Folding Doors • Window Repairs
 - Misted Unit Repairs • Garage Doors
 - 'Kestrel' PVC-U Facia, Soffit, Mouldings etc
 - Conservatories • Roof Atriums
- ~ Fully Qualified ~

FENSA

All work
guaranteed

TEL: 01929 481 581

enquiries@wfsnookandsonltd.co.uk

www.wfsnookandsonltd.co.uk



Bug Busters Pest Control

Professional Reliable Service

Wasps, Mice, Rats, Ants, Flies, Fleas,
All dealt with promptly & efficiently.

All Dorset areas covered Tel: 01929 460011
www.bugbustersdorset.com Mob: 07973 407027

The Artificial Grass Installer

Your lawn should be a pleasure, not a chore

Pet friendly and easy to maintain

We fit artificial grass throughout Dorset

Senior discounts available

Please call for your FREE quotation

Contact: Roger Hill

on: 01929 550621 / 07708 923998

35 Ropers Lane, Wareham, Dorset. BH20 4QT



Find us on Facebook:

artificialgrassinstallerdorset

Buds of Mare

Wedding Flowers & Funeral Tributes

Bouquets Made To Order

Contact Caroline for further details

07966462974

IDEAL SKIP HIRE

Skips from 2 - 40yds

SAND GRAVEL HARDWARE
SHINGLE & TOP SOIL

Available loose or in 25kg & 1 ton bags
Delivery or Collection

Trade & DIY customers welcome

A Fast, Friendly & Efficient Service

TEL: 01929 422980

Countryside Tree Surgeons

Professional specialists - NPTC certified tree surgeons

All aspects of Tree Surgery, Hedge Trimming & Fencing

FREE QUOTATION

Established 18 years. Fully Insured. Family-run business

Please call Wayne Pitman

0800 389 3992 (office)

01929 551816 (home)

07979 447777 (mobile)

BRIAN MOORE

INDEPENDENT TELECOM ENGINEER

(Ex-BT)

Repair of phone lines & broadband

HALF BT PRICES!!

07858 458997 - 01929 554886

Michael B. Alberry

DECORATOR

Property Decoration & Renovation

07796 640538

01929 424882

LOCAL TRADE ADVERTISING

SANDIE'S BARBERSHOP

191 HIGH STREET, SWANAGE

Open Mon - Fri, 9am - 5pm,

Sat 8.30am - 3pm

We are closed on Sunday.

Late night Thursday till 7pm

01929 426364

Brickcraft

Checkatrade.com
Where reputation matters

Construction

Building Contractors

- Extensions
- Artificial Lawns
- Patio/Paving
- Garden Walls

Insurance & General Building Work Undertaken

Call Charlie on 07973 834175 or 01929 405075

www.brickcraftconstruction.com



Professional valeting & detailing
Collection, drop off & mobile service

Call Alan on 07584 670097

A.D.S PROPERTY SERVICES

General Builder

EXTENSIONS,
KITCHENS & BATHROOMS,
BRICKWORK,
PATIOS, FENCING,
PLASTERING,
DECORATING,
ROOF REPAIRS
& CHIMNEYS

Tel: Andy Smith 01929 553535 City & Guilds
Mobile: 07743 440906

DOORS, WINDOWS & LOCKS

GLASS REPAIRS: MISTED, DAMAGED DOUBLE
GLAZED UNITS REPLACED.

PVC-U & TIMBER WINDOWS & DOORS

INSTALLED. INTERIOR DOORS FITTED.

PVC-U DOOR PANELS REPLACED.

CAT FLAPS FITTED.

LOCKS OPENED, REPLACED, UPGRADED.

SNAPPED KEYS EXTRACTED.

HANDLES - HINGES - LETTER BOXES - SEALS

GASKETS REPLACED

DOOR & WINDOW RESTRICTORS &

KEY SAFES FITTED

TEL: 01929 481496

MOBILE: 07484 186617

EMAIL: dwlocks@outlook.com

FENSA, MTC-CRB CHECKED. GGF1 INSURANCE-BACKED GUARANTEE



Roy Osmond Ltd
Traditional Forge Works

Light Fabrication, Security Grills, Hand & Balcony
Rails, Fire Escapes & Bespoke Work
Stainless Steel and Glass Balconys

Telephone on: 01929 400520
or mobile: 0779 6044859

NJA Specialist Tree Care

All aspects of Tree Surgery
& Hedgework undertaken

Fully insured and NPTC Qualified
Free Quotations and advice

07703 210647 or 01929 481600



Ian Michie
TREE CARE

Professional & skilled arborists

Tel: 01929 554281

Mobile: 07837024558

www.ianmichietreecare.com

Nick Honess Plumbing & Heating

Boiler Installation,
Servicing and repairs

• Gas Certificates • LPG

• Full range of traditional
plumbing services.

01929 423379/07702 474 667



510434

FENCING

All Types Supplied & Erected
FREE ESTIMATES

JL Corbin Fencing Contractors

01929 552 061 07774 207 924



LYTCHETT MINSTER
JOINERY LTD

Manufacturers of Purpose-made
HARD & SOFTWOOD JOINERY

01202
622441

E: info@lytchettminsterjoinery.co.uk
www.lytchettminsterjoinery.co.uk

SAM FOOKS

General building and Garden maintenance

Including: Pointing, Patios,

Garden Walls and Fencing

Tel: 07772 794056 / 01929 421250

Email: samfooks1988@icloud.com



ROOFING SPECIALIST SPARROW'S

Over 30 years

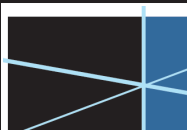
Membership Federation of Master Builders

NO JOB TOO SMALL

01929 421156

07974 077885

The Premier Trade Organisation
High Performance Flat Roofing Specialists
Re-Roofing - Slating & Tiling
Roof Repairs - UPVC Facias & Gutters
Chimneys Removed or Repointed
sparrowroof@gmail.com



SWANAGE
& DORSET

SCAFFOLDING & ROOFING

All aspects of Residential & Commercial Scaffolding

Flat Roofing - Re-roofs, Slate or Tile, All repair works

Emergency Call Outs - Free Quotations & Estimates

Temporary Roof Coverings - Fully Insured

OUR PRICE WON'T BE BEATEN

01929 424553 01258 858214

07813 346993

Garage Doors

New Installations

Repairs

Servicing

Automation



Dorset Doors Ltd - Wareham

01929 660789

LOCAL TRADERS

USE THEM OR LOSE
THEM FOLKS!

KEEP IT LOCAL

SWANAGE PROPERTY MAINTENANCE

Kitchens: Bathrooms: Renovations
Electrical: Plumbing: Heating Systems
Flooring: Plastering: Decorating



Email: spmdorset@outlook.com

Call Dave: 07803 728371 01929 761372

LOCKSMITH

Police recommended insurance approved locks available
Additional Security for Garage & Gates, Key safes, Codelocks
UPVC multipoint & Wooden door lock specialist
Local Master locksmith & Safe Engineer Service

07709 545701

www.parrotlocks.co.uk
paul@parrotlocks.co.uk



Proud members of
Checkatrade.com
Where reputation matters

LOCAL TRADE ADVERTISING



Swanage based
Window &
Door Company
FENSA

Installers of

Windows - Doors - Bi-fold Doors - Conservatories
Fascias - Soffits - Guttering - Cladding
Window & Door Repairs
Misted Sealed Units replaced
UPVC - Aluminium - Timber
Ggfi Insurance back guarantee • 10 years guarantee

For a free, no obligation quote contact us on:

Office 01929 424199 Mobile 07538 950 230

Email - redhillwindowsltd@hotmail.co.uk

Web - www.redhillwindowsltd.co.uk

20 years experience working in Purbeck

ARC Electrical

Swanage based

Rewires - Additional Sockets
Data Points - Lighting
P.A.T. Testing

07702 571189

Purbeck Aerials.Com

Same day service Free Sat SKY
TV Aerials WI-FI Wall Mounting
30 years trading experience

We offer same day service and an OAP discount

Online Shop 01929 553705
07976 222887



Bathrooms

Ensuites - Wetrooms - Cloakrooms
Mobility - Bath out shower in

Design & Installation Service

- Large modern showroom with inspirational displays
- No job too small
- Free site survey and quotations

Unit 9, Justin Business Park,
Sandford Lane, Wareham BH20 4DY
01929 551963 www.roomh2o.co.uk

Great Escape Gardens

General Maintenance Specialist
Preparation & Planting

TREE PRUNING & FELLING, PATIOS & DECKING
FENCES & GATES

01929 781680, 07767 028248

www.greatescapedgardens.co.uk

Quality Sweep

- Power or manual sweep & HEPA filtered vacuum
- CCTV inspection
- Bird nest removal
- Certificate issued with every sweep

Tel: 01305 852134 Mobile: 07941 350127

SWEEPS FROM £40



Fireplaces, gas fires and wood burning stoves

Full installation service
Gas Safe and HETAS
registered engineer

Tel: 07506536368

Email: kb-gas-stoves@hotmail.com

Web: www.kbgasstoves.com

Join our trusted Trade advertising section and let locals know what services YOU offer!

Six month block (single trade advert) £158.76 (inc. VAT)

USE OUR LOCAL TRADES PEOPLE OR LOSE THEM!

Purbeck Domestic & Trade Waste



Fully Insured - Registered Waste Carrier

Domestic Clearances - Commercial Clearances
Garden Clearance

Waste Electrical & Electronic Disposal

White Goods - Old Furniture & beds - Light Demolition

Evening & weekend collections available by appointment

Telephone: 01929 550 615

Mobile: 07816 456 814

www.purbeckdomestictradewaste.co.uk



AMAZING PRINT

AT MINIMAL ENVIRONMENTAL COST

GIVE YOUR BUSINESS THE BOOST IT DESERVES

Superb quality, cost effective
eye-catching design and print

**Get the word out and watch
your sales soar!**

- Leaflets • Company brochures
- Publicity material
- Full design service

blackmore

superb print - naturally

01747 853034

sales@blackmore.co.uk

Longmead, Shaftesbury, Dorset, SP7 8PX

www.blackmore.co.uk

Man & Van

available to hire

Rubbish Clearance

**Half the price of a skip -
and we do all the work!**

07767 479438

Fully licensed & insured

PURBECK WHOLEFOODS



Community
Mask
Trees

We're proud
to be your
local stockist!

We are proud to be part of the 'Community Mask Tree' group. Local volunteers provide masks which are made available to the public for a small donation of £2, which will go to Forest Holme Hospice. You will find the masks we have available hung on our shop porch. Please do pick the one you like and support Forest Holme!

Opening Hours: Mon - Sat, 9am - 1pm

We're serving from the shop
door and taking
telephone orders.

Local deliveries can be arranged
on a one-to-one basis.

REFILLS STILL AVAILABLE!

We are here for you
We are open - we are safe!

37 North Street, Wareham. BH20 4AD. Tel 01929 552332 email purbeckfoods@yahoo.com