

The Purbeck Gazette



June 2021
Issue no. 257

Published by Purbeck Media Ltd

20,000 Copies:
Swanage to Dorchester,
Lulworth to Bere Regis

*You can also read online or download the entire magazine in book format at:
www.purbeckgazette.co.uk*



Cream Of The Arts Crop! Pg 33 - 35



Chadwick Memorial Update Pg 8



Eyes Along The Coast Pg 14



Bread & Cheese Wheel Pg 23

PURBECK WHOLEFOODS



Find us at Wareham Market on Saturdays
FREE local home delivery

37 North Street, Wareham. BH20 4AD.

Tel 01929 552332



THE SILENT WOMAN
PUB & DINING | WAREHAM, DORSET

WE'RE GOOD TO GO

YOUR LOCAL PUB IS BACK OPEN
NEW OWNERS · NEW MENU · ALL WELCOME
thesilentwoman.co.uk | 01929 552909

SWANAGE TYRES
NOW TESTING CLASS 4 &
CLASS 7 VEHICLES!

6 Victoria Avenue Industrial Estate, Swanage
01929 421398

Gasways Heating
Plumbing and Heating Specialists
Domestic & Commercial

01929 427713 / 07889 409584

Proud members of
Checkatrade.com
Where reputation matters

safe
REGISTERED
187204

Gasways Heating

Editor's note...



Welcome to the June edition of your Purbeck Gazette! We are BACK in full print once again - whoop! The past year has been a shocker, hasn't it?! At the time of writing, concerns are growing with regards to the newer Indian Corona strain, which has hit the north of the UK. At this point, anything we can do to avoid any future lockdowns must be done to protect the extremely fragile local economy, as well as to save lives. Whilst everything is due to open up again, finally, I ask that you all remain vigilant as you make the concerted effort to attend local events and get your shopping from local businesses. On that note - I mentioned local events - because they are BACK ON! At last! It's just amazing to have something to look forward to, isn't it?!

This month we bring you a packed Arts and Entertainment section, bursting with things to get out and do - for the first time in over a year. People are putting their best foot forward and are getting organised to welcome you to their event as safely as possible. We also have a ton of local arts and crafts folk opening up in June, inviting you round to their place - go and see them! They'll be delighted and I'm sure you'll enjoy being able to make plans for fun days out once more!

Finally - for over a decade, David Holman has been one of our proofing team, as well as being a huge support to the Gazette. I'm absolutely devastated to say that David passed away recently after a short illness. We will bring you more next month about the life of this extraordinary man and internationally-renowned playwright, but for now, all of our love goes to David's family and Polly, his best four-legged friend.....

The Purbeck Gazette is delivered by:



We distribute 20,000 copies of the Purbeck Gazette every month to properties in Purbeck utilising Logiforce GPS-tracked delivery teams.

(Residents in blocks of flats, or who live up long driveways or in lesser populated areas will not get a door-to-door delivery. You will not receive a copy if you display a 'no junk mail' sticker on your letterbox)

Purbeck has a population of approx. 45,300, we print & distribute 20,000 copies for Purbeck and further afield (Crossways, Broadmayne, Bloxworth etc).

You will not therefore ALL get a paper copy! 1 in 3 properties get a copy. We ensure a good spread of distribution throughout the whole area to get the best response for our advertisers, who are our business customers.

We publish in-full online for those households who do not receive a paper copy through the door.

See: www.purbeckgazette.com

The **JULY 2021** edition has a **deadline** of 10th June.

The **AUGUST 2021** edition has a **deadline** of 9th July.

Public Notices & Information



Compiled for the Purbeck Gazette by
National Coastwatch Institution, Swanage



Solar & Tidal Predictions - June '21

Peveril Ledge, Swanage

Date	HW	LW	HW	LW	HW	Moon / Tides	Sunrise	Sunset
01-Jun	01:54	08:52	14:17	21:29			05:00	21:10
02-Jun	02:54	09:59	15:16	22:36			04:59	21:11
03-Jun	04:04	11:04	16:24	23:44		NP	04:59	21:12
04-Jun	05:28	12:06	17:40				04:58	21:13
05-Jun		00:41	06:37	13:02	18:45		04:57	21:14
06-Jun		01:36	07:27	13:52	19:37		04:57	21:15
07-Jun		02:23	08:09	14:37	20:21		04:56	21:16
08-Jun		03:05	08:47	15:19	21:01		04:56	21:17
09-Jun		03:44	09:22	15:58	21:36		04:56	21:18
10-Jun		04:21	09:56	16:35	22:09	NM	04:55	21:18
11-Jun		04:55	10:29	17:11	22:38	SP	04:55	21:19
12-Jun		05:30	10:59	17:46	23:07		04:55	21:20
13-Jun		06:03	11:27	18:21	23:37		04:55	21:20
14-Jun		06:39	11:59	18:59			04:54	21:21
15-Jun	00:12	07:17	12:38	19:40			04:54	21:21
16-Jun	00:55	08:02	13:26	20:29			04:54	21:22
17-Jun	01:48	08:54	14:23	21:28			04:54	21:22
18-Jun	02:54	09:57	15:29	22:37			04:54	21:23
19-Jun	04:11	11:11	16:40	23:51		NP	04:54	21:23
20-Jun	05:25	12:21	17:48				04:55	21:23
21-Jun		00:55	00:59	13:21	13:28		04:55	21:23
22-Jun		01:52	02:00	14:16	14:30		04:55	21:24
23-Jun		02:45	08:16	15:08	20:38		04:55	21:24
24-Jun		03:36	09:08	15:59	21:31	FM	04:56	21:24
25-Jun		04:25	09:57	16:48	22:22	SP	04:56	21:24
26-Jun		05:14	10:45	17:37	23:10		04:57	21:24
27-Jun		06:01	10:51	18:25	23:58		04:57	21:24
28-Jun		06:48	12:18	19:13			04:58	21:24
29-Jun	00:46	07:36	13:05	20:02			04:58	21:23
30-Jun	01:35	08:26	13:53	20:55			04:59	21:23

NM = New Moon + FM = Full Moon + NP = Neap tides + SP = Spring Tides

All times are local

Swanage Town Council Meetings - JUNE 2021

ALL 'IN-PERSON' MEETINGS PREVIOUSLY OPEN TO THE PUBLIC ARE SUSPENDED DUE TO COVID RESTRICTIONS - PLEASE CONTACT THE COUNCIL DIRECTLY FOR INFORMATION

Wareham Town Council Meetings - JUNE 2021

ALL 'IN-PERSON' MEETINGS PREVIOUSLY OPEN TO THE PUBLIC ARE SUSPENDED DUE TO COVID RESTRICTIONS - PLEASE CONTACT THE COUNCIL DIRECTLY FOR INFORMATION

Dorset Council

For details of council meetings, councillors and decisions please use the web address: www.dorsetcouncil.gov.uk/committees

Alternatively, if you use the old 'Dorsetforyou' address:

www.dorsetforyou.gov.uk/committees - you will be redirected to the same link called 'committee meetings and papers'.

About Purbeck Media Ltd

The Purbeck Gazette prints 20,000 copies every month and delivers throughout the region from Swanage to Dorchester, Lulworth to Bere Regis. The Purbeck Gazette is published by Purbeck Media Ltd. All editing, graphic design and lay-up is completed in-house by Purbeck Media Ltd. The Purbeck Gazette is printed by Blackmore Ltd of Shaftesbury and delivered by Logiforce GPS-tracked distribution. The Purbeck Gazette website is managed and edited on-site by Purbeck Media Ltd. Purbeck Media Ltd also publishes The Purbeck Guidette, the Purbeck Visitor Guide. All rights reserved.

OUR TEAM: The Gazette team consists of: Nico Johnson, Editor, Kay Jenkins, Sales & Accounts Executive, David Hollister, Columnist, John Garner, Columnist, Regula Wright, Columnist. Purbeck Designs (some graphics), Kim Steeden, Spotlight Diary Editor.

VOLUNTEERS: A massive thanks to our volunteers, whose help is invaluable each month. Our proof reader is the very professional Gerry Norris, with volunteer Photographer, Tim Crabb, also on-hand.

Telephone Sales & Client Contact

We reserve the right to maintain contact with our advertising clients, past and present, through the use of telephone calls and emails. We retain customer's names, addresses, emails and telephone numbers on file. If you do not wish to hear from us to be reminded of upcoming deadlines, please do let us know!



100 years of the Royal British Legion is marked with a ceremony at Swanage War Memorial on 15/5/21. Picture by Robin Boulwood

Contents

ARTS & ENTERTAINMENT	30
BUSINESS MATTERS	20
COMMUNITY MATTERS	6
COUNCIL MEETINGS	2
FEATURES	
Arts Are BACK! We encourage you out and about!	33 - 35
Blast From The Past - June 2011	20
Cerne Abbas Giant Older Than Thought	7
Election Results	10
Ferry Announces Fare Rises	16
John Garner writes - Away from The Numbers	25
Gazette Gardening with Simon Goldsack	26
National Coastwatch	14
Purbeck Valley Folk Festival 2021	33
Suttles Celebrate Chris' 70th!	29
Telling It Like It Is - David Hollister writes	6
Trevor Chadwick Memorial Update	
FOOD - Godlingston Manor Kitchen Gardens	23
HEALTH & BEAUTY	37
LETTERS	4
MOTORING	24
NATURAL MATTERS	25
TRADE ADVERTS	41
DIARY SPOTLIGHT	39

CONTACT US

17b Commercial Road
Swanage, Dorset BH19 1DF
www.purbeckgazette.co.uk

**THE OFFICE IS NOT OPEN
TO GENERAL PUBLIC.
ADVERTISERS ONLY PLEASE!**

Editorial Enquiries:

Editor, Nico Johnson
01929 424239
ed@purbeckgazette.co.uk

Advertising Sales:

at: www.purbeckgazette.co.uk
Kay Jenkins 01929 424239 ext.1

TO ADVERTISE

See our website shop at:
www.purbeckgazette.co.uk
for rate card, booking & payment
Prices from £25.80 (inc VAT)
Discounts available

The legal stuff...

Every effort is made to ensure the accuracy of information contained in this magazine, but the Editor is unable to accept responsibility for any omissions or errors that may occur.

The inclusion of any article or advertisement does not constitute any form of accreditation or approval by the Editor.

**No part, written or visual,
of this publication may be
reproduced without written
permission of the Editor.**

DEADLINE FOR THE JULY EDITION IS NOON, 10th JUNE

Your Letters

The clue is in the heading above - these are our readers' letters. They are NOT articles, they are letters. By you. Our readers. They are not our letters, they are yours - your letters. Simple!

Please send all letters to ed@purbeckgazette.co.uk with 'letter to the editor' in the email subject line. Please do not exceed 350 words. If handwritten, please ensure it is short and legible.

PLEASE DO NOT DUPLICATE LETTERS TO OTHER PUBLICATIONS - WE DO NOT PRINT MULTI-PUBLICATION LETTERS.

JULY deadline: noon, 10th JUNE

Wareham Church Update

Dear Readers,

I would like to update your readers on what has been happening in the Parish of Wareham Church of England Family.

Last year, at the start of the first Covid-19 lockdown, churches nationwide were obliged to close, so the Church had to reimagine new ways to reach out into the community. We started by recording on-line church services available on YouTube and also available as a recorded telephone service. We managed to stay in touch with our congregations by hosting virtual coffee mornings, quiz nights, as well as the regular Zoom committee meetings, prayers and sermon discussions. Also, the several homegroups throughout the parish made sure that their members were all coping with the imposed restrictions and isolation.

Since last year we were able to reopen our churches for socially distanced communion services and latterly we were able to reintroduce the choir, although members of the congregation as yet cannot sing inside the church. However, we overcome this by joining together and singing a hymn outside after the service!

Of course, bills still needed to be paid but with all of the regular fundraising events having to be postponed we had to come up with new ideas. Parishioners responded with a real spirit of generosity and as well as monetary gifts, another novel idea that was hit upon was an Antiques and Collectables Appeal. This gave parishioners an opportunity to donate unwanted items of merit, such as china, silver, jewellery, watches, paintings, etc.

Then, through the generosity of Dukes of Dorchester Auctioneers; Woolley and Wallis of Salisbury, Auctioneers, who waived their sellers fees, and also Mrs. Amy Brenan of Heirlooms Jewellers, Wareham and Mr. Terry Parsons, of the Dorset Coin Company, Parkstone, we managed to raise a staggering £12,500. This sum will help to contribute towards general church funds, overseas mission and community support locally. We are most grateful to all who selflessly donated items.

Moving forward, the pandemic has caused us to re-evaluate the future growth of our churches. We aim to keep the on-line services, in tandem with live church services and then to reach out in whatever way we can to the wider community, after all our mission is to serve.

We aim to keep our churches open and if you feel you would like to volunteer as a guardian and guide to welcome and help people; or join in any way, or simply attend one of our church services, we would love to see you. You can be assured of a warm welcome by our Wareham church family community.

The Reverend Canon Simon Everett. Rector of the Parish of Wareham.
Telephone: parish office on 01929 550905, Email: rector@warehamchurches.org.uk
Website: www.warehamchurches.org.uk

Regret Closing Of Forum

Dear Readers,

The Association of Dorset 50+ Forums

It is with much regret that I have to report that the above association, together with the vast majority of 50+ and Seniors' Forums in Dorset, has been dissolved.

This is due to the lack of volunteers coming forward to become committee members and to help in general. The monies that were held for the Wareham Area Seniors' Forum have been distributed between six charities relating to older people within Purbeck, plus Age UK NSWD, who were the initiators of the forums under the guiding light of Hilary Foggo.

The RED LION

Beer, Ale & Cider Specialists
Food served 12 noon - 3pm, 6pm - 9pm

High Street, Swanage. 01929 423533

At our last meeting we had two committee members and one helper and it was thought that we could not, in all honesty, give the service to our members that we would like. This has been the story for the original seventeen forums within Dorset, with one exception that disappeared into the ether.

We are sorry we are no longer able to provide a service to the older people of Dorset and are very much afraid that this will be a continuing theme as people return to work after our last horrendous year.

We wish you well and hope to keep in contact with you in some form.

Anne Laugharne, Ex Chair of the Association of Dorset 50+ Forums and Ex Chair of the Wareham Area Seniors' Forum.

Keep Eyes On Pets!

Dear Nico,

According to Dorset Police, the incidence of pet abduction has increased by some 70% during the C-19 lockdown.

Whilst this is not confined to Dorset, there are many visitors with their dogs in Swanage; cats are also on the thieves' agenda. Often using distraction tactics to target dog walkers, thus enabling them a better chance of stealing the animals. Any offer of a pet, especially under dubious circumstances, should result in researching the provenance thoroughly.

Media highlight of this practice always relates to the family members missing their pets: however, it seems to go unmentioned how traumatising kidnap must be for the animals involved.

Domestic pets relate to familiarity and routine in much the same way as we all do; imagine being deported to another planet and losing the name that you were once called by, possibly resulting in reactive behaviour.

Perhaps it is time to observe the world not only through our own eyes, but through the eyes of our charges; NOT the money-puppets some have become.

Keep your eyes on your pets, update their satellite chips on change of address or phone number, so that everyone returns home safely.

Yours sincerely, Myk Hamilton, by email

Ten Years Gained!

Dear Readers,

Further to my letter on Scarves for Falkland veterans, may I apologise and say it's forty years next year, not fifty.... Serious typo! Makes us all ten years older.....!

Thanks, Carolyn Hooper, by email

More Traffic For Corfe?

Dear Readers,

Do we really need new homes and much more traffic in West Street, Corfe Castle? Here is a poem I have penned:

In Corfe Castle every day

Our beautiful picturesque little town

There's one narrow road where lorries and cars

Creep painfully up and down

The locals didn't want new homes around

This beautiful picturesque little sight

So traffic should all go up East Street

Instead of it all turning right

The middle of town, in the Square



Square & Compass

Worth Matravers

www.squareandcompasspub.co.uk

01929 439229

JUNE 2021

Best pub in the world! (if you like it, that is...)

We are open with our usual hours, seven days a week.

We're hoping to reopen indoors in June when current restrictions are lifted.

Ale, cider, pies, pasties & cake are all available!

Support your local, independent establishments!

Stupid Fred on his daily run

Parked his van on the Cross by the Bakers

To pop in for a tea and a bun

Opposite to where Fred had parked his van

A truck came and made a quick stop

In front of the church by a no parking sign

To unload all his goods for a shop

With this badly parked truck on one side

And Fred's van blocking all of the view

There was just a small gap between them

About enough for a car to squeeze through

Now this big lorry came on his daily run

The driver was miserable Ted

A long-faced man, with no sense of fun

Not a humorous thought in his head

With the very slow traffic, Ted's lorry moved on

The Gallery not yet to be seen

Holiday makers were all in the road

So Ted couldn't find a gap in between

As miserable Ted sat there in dismay

No traffic behind could get through

Ted's lorry is not moving from that spot

Til he finished what he had to do

It was soon that the traffic reached gridlock

Nothing could move either way

People were shouting, horns were blowing

It was hell on that hot, summer's day

The lorry, the van and delivery van

Had effectively throttled the Square

All this trouble and chaos was caused

By a truck that should not have been there.

It was hours before things started to move

The police came in traffic jam choppers

Roads and side streets all around

Were swarming with wardens and coppers.

The moral is, no more can be sold



WPM Residential Lettings

If you need to Let or want to Rent, contact WPM.
We offer a personal service to Landlords & Tenants

15c Commercial Road, Swanage. 01929 426200

Web: www.wpmlettings.co.uk Email: wpmlettings@gmail.com

A personal book-keeping service
tailored to your needs

Phone now

01929 425660

07974 971919

Email: peter.seale@talk21.com

Peter D. Seale

ACCOUNTANCY SERVICES
BOOK-KEEPING
TAX RETURNS

About this turmoil and hassle

Fred's still sat there scratching his head

Trying to get out of Corfe Castle...

Ken Williams, by hand

Public Space Vandalism?

Dear Readers,

While walking my dog about the grassed areas of Swanage, I am aghast by the maintenance of these areas. We, the rate payers, pay £136,000 per annum for a Chief Horticulturist and to my horror, untrained labourers, armed with strimmers, mowed nearly all of the daffodils as soon as the flowers had nearly died off. Even in junior school on nature walks, we were taught that the leaves of daffodils put the nutrients back into the bulbs when they die back, so that they will flower the next year.

Worse still, on Sandpit Field, they slaughtered all the protected Bluebells whilst some were still in bud and yet to flower. I have photos of both of the above and I consider it to be sheer vandalism. On top of this, despite there having been little rain and many frosts in April, the grass hasn't really grown. We have a young employee who tells me he is in charge of grass cutting this year. Cutting grass which hasn't grown, weekly, destroying the daisies, dandelions and buttercups, depriving the bees, butterflies and many insects of their food, as well as killing many at the same time. These actions then also impact the bird population as they are deprived of food - the insects and caterpillars which young birds need to survive.

(No rates from me from now on then - the £136,000 Chief can pay them!)

Simon Molloy, by hand

High & Mighty Continuance

Dear Gazette,

I write in response to your past two editions - containing first a letter from Lord Allcock of Denton (April), followed by a letter from King Catwallah III of Langton-Upon-Hill (May), written in response to Lord Allcock.

Both are clearly uncouth and lowly individuals as I have not had occasion to invite either to my selected dinner parties for the great, good and worthy. I therefore suggest both titles to be balderdash and codswallup.

I, Lady Farquhar Belissima of Worth, am known to be the only true local landed gentry on the isle and dispute claims of your previous two correspondents suggesting they know anything of interest or note with regards to the Isle of Purbeck - the opinions of the lowly are known to be worthless.

Yours, Lady Farquhar Belissima, hand-delivered by uniformed Footman.

@29 re-cycle

29 Commercial Road, Swanage. BH19 1DF

We throw HUGE amounts of electrical items away every year.

At @29 re-cycle, we aim to STOP some of this waste!

We test and clean every electrical item and guarantee them for three months, and sell them at roughly 25% of the original price.

Proceeds donated to:

THE LIKULEZI PROJECT (registered charity 12838)

Email: info@africaaware.net www.africaaware.net

Please contact the charity directly for further information,
or ask us for a leaflet explaining their work

OPEN MONDAY - FRIDAY, 10am - 5pm.

ALWAYS WANTED: Smaller pieces of furniture, household & electrical items.

Drop in to shop, or ring/text Jane on 07795 193090 for collections.

Community Matters

TELLING IT LIKE IT IS...

Just Do It...

by David Hollister

If you tell someone that there are eight million stars in the galaxy, they will believe you. If you tell them that the paint is wet, they will automatically stretch out their fingers and touch it.

If you see that a column in this magazine is headed: 'Telling It Like It Is' and see that it's written by me, you should – by now – know what to expect. That it will be me – Mr Marmite – actually 'telling it like it is' and occasionally turning over a few stones. I welcome comments, complaints and criticism. But I would prefer that you have the courage of your convictions and don't hide behind an alias. What are you afraid of?

At the last online meeting of Swanage Town Council, I exercised my right to question the council on the subject of the paramedic car. On a previous occasion, I'd asked them to let me know whose name would be on the document if – as I regrettably expect – the Ambulance Car is taken away. Still nobody can answer. I don't want to hear that it's the CCG, or Dorset Council, or the NHS. These are all organisations over which someone must be responsible. On whose desk the buck will stop. Hopefully, someone with the courage to sign their real name, not 'squiggle pp'. Still no reply.

I have been assured by a Councillor that more negotiation is afoot and that very possibly Swanage will have a real ambulance back to do the work of the paramedic car. How does that work? Where will it be kept? Can we be assured that it won't be kidnapped to take people to queue at Poole or Bournemouth Hospital? In other words – a rapid response vehicle staffed by qualified paramedics as we have now.

We won't turn down a proper Swanage-based ambulance, but we also need the flexibility of a car that can get to the casualty in five minutes as we have at present. Over to you, Councillor; can you reply to this request and set out exactly what's happening and when it's likely to happen? We don't need any more 'engagement events.' Stop waffling, CCG and SWAST. We have had prevarication and – on occasion – elasticity of the truth – from so many angles. So: a simple yes or no. And if "no", a name. Not a lot to ask, is it?

Making a little progress on all the other stuff; a useful letter from Jack Wiltshire, Head of Highways on Dorset Council. He confirms that the absence of a footway in Harmans Cross is dangerous and then goes on to say that they can only deliver schemes within the available budget. May I respectfully point out that we in South Instow have had a local contractor supply and lay a road three times the width and half the length of the required footway. For £2500 including VAT.

I have asked Worth Matravers Parish Council to ask Dorset Council to confirm the budget that they think is necessary to save lives in Harmans Cross. I will report that back to you next month. I do hope that Dorset Council has insurance against a Corporate Manslaughter charge.....

More positive news on the Wareham bridge..... "We are looking to build a shared footway/cycleway over the existing road bridge. This would be delivered using a mixture of local developer contributions and national funds." Tantamount to an admission that "Danger – Pedestrians in Road" is unacceptable which we've been telling them for so long. Watch this space

Still talking to the Community Highways Officer regarding the recurring puddle. We had a useful meeting on site recently, and he thought that

we'd identified the problem with inadequate drainage. It rained. We hadn't. So, I wrote again. He now says: "Following a meeting with our flood risk management team, I will look into installing a channel cut through the verge to allow surface water to run off the lowest point of the dip in the road..... I will keep you updated on its progress."

A solution which I have been putting forward for at least three years requiring a sledgehammer and a spade, and half a day's work for someone stronger than me! A local resident, a qualified roads surveyor, has offered his advice, an offer the County Highways Officer has ignored.

And that Langton junction? I am told by a Councillor that there will shortly be a site meeting (yet another site meeting) which the Highways people will attend, plus a local parish councillor, and to which he assures me that I will be invited along with my qualified roads surveyor friend. I wouldn't dream of advertising the date and time on the local Facebook group, or indeed on my radio show, as we wouldn't want members of the public coming along and causing a traffic hazard.....

So, the Ferry Company won their Toll Application to the Department of Transport. Did anyone really think they wouldn't? So, some of the fares went up on 17th May 2021 and will provide them with some much-needed revenue. Cars and light vans will be £4.75 (previously £4.50), coaches and minibuses will be £9.50 (£9.00). All remaining fares appear to remain the same. Best value is 100 passes for cars at only £295.00 – that's £2.95 a journey. Yes, I know it's a huge outlay to most people. But the saving for regulars is such that even if you put it on your credit card, it's still cheaper.

As I write, the main road through Sandford is once again controlled by traffic lights due to road works for two weeks, with their associated queues, even if they don't break down! Queue in the countryside for a ferry, or at traffic lights, children's crossings, roundabouts and road junctions? No contest.

I understand that the Great Dorset Beach Clean was over-subscribed to the point where 'all places are full'. I took this up with Sustainable Swanage who said that 'numbers had to be limited this year due to Covid restrictions.' Surely such rejection can only serve to deter people from getting involved? So, my answer is simply this – "hands, face, space and fresh air". Surely there's enough fresh air on the beach for all of us?

You don't have to 'sign up'. You need sturdy shoes, sturdy gloves, a good supply of black bags and a good supply of common sense.

In the words of Nike – "Just Do It".

PURBECK COAST
101.2FM

YOUR COMMUNITY RADIO STATION, BROADCASTING FROM THE COMMUNITY, FOR THE COMMUNITY AND BY THE COMMUNITY. LISTEN LIVE TO DAVID HOLLISTER ONLINE ON DRIVE TIME, WEEKDAYS, FROM 4-6PM

www.purbeckcoast.com text: 07553 236500 01929 424424
hello@purbeckcoast.com Purbeckcoast Purbeck Coast

PURBECK GOOD NEIGHBOURS

COMMUNITY FUND

Do you need some help ?
Our Volunteers are Ready & Willing
They can do all sorts of things for example:-

- Help with Shopping
- Change Light Bulbs - Move some Furniture
- Remove Rubbish - Walk the Dog
- Re-tune TV or help with Mobile Phone
- Small Repair Jobs

Just give us a call!
01929 424363

Purbeck Good Neighbours
All we ask is a minimum donation of £2.00

Bovington Tailors

Ladies & mens alterations
Loose covers,
Antique upholstery
Medal mounting & framing

Unit 3, Bovington Shopping Centre,
King George V Road, Bovington

01929 462195

www.bovingtontailors.
wordpress.com

**Clock &
Watch
Repairs**

Free Collection

Georgian Gems

28 High Street, Swanage.
01929 424697

MATT HILLAN

Building Alterations
& Maintenance

All Trade Aspects Undertaken
Free Estimates Fully Insured

01929 427296

07971 690817

Happy to help and advise

**Curtains
by Clare**

Have your curtains
made for you
at very reasonable rates

Also curtain repairs
and alterations

Phone 01929 550714
mobile 07969 695338

**Cerne Abbas Older Than
Thought Previously!**

National Trust archaeologists surprised by likely age of enigmatic Cerne Giant – but some mystery still remains

Britain's largest chalk figure probably first created in late Saxon period. Results rule out theories that giant is prehistoric or Roman. 'Exciting' results surprise archaeologists and historians. New theory suggests giant was forgotten for generations before being rediscovered and re-chalked. New 'fly-through' video created so people can explore the landmark virtually

After twelve months of scientific analysis, the National Trust can for the first time reveal the likely age of the Cerne Giant, Britain's largest and perhaps best-known chalk hill figure.

Now, after state-of-the-art sediment analysis funded by the National Trust, the University of Gloucestershire, Allen Environmental Archaeology and the Pratt Bequest, National Trust archaeologists have concluded the giant was probably first constructed in the late Saxon period. Independent geoarchaeologist Mike Allen, whose research is helping the Trust understand more about the landscape in which the giant was created, said the result was surprising. "This is not what was expected. Many archaeologists and historians thought he was prehistoric or post-medieval, but not medieval. Everyone was wrong, and that makes these results even more exciting."

National Trust senior archaeologist Martin Papworth said: "The archaeology on the hillside was surprisingly deep – people have been re-chalking the giant over a long period of time. The deepest sample from his elbows and feet tells us he could not have been made before 700AD, ruling out theories that he is of prehistoric or Roman origin. "This probable Saxon date places him in a dramatic part of Cerne history. Nearby Cerne Abbey was founded in 987AD and some sources think the abbey was set up to convert the locals from the worship of an early Anglo Saxon god known as 'Heil' or 'Helith'. The early part of our date range does invite the question, was the giant originally a depiction of that god?"

But other samples – taken with permission from Historic England and the Secretary of State – gave later dates of up to 1560, which presented Martin and his team with a conundrum, because the earliest documented record of the giant is a church warden's account of repairing him in 1694.

"The science suggests he could be medieval, but intriguingly, surviving documents from Cerne Abbey don't mention the giant. In the 16th century it's as if the giant's not there, and John Norden's survey of 1617 makes no mention of him. And why would a rich and famous abbey – just a few yards away – commission, or sanction, a naked man carved in chalk on the hillside?" Martin's working theory is that the giant may have been a medieval creation but then – for reasons we may never know – was neglected for several hundred years, before being rediscovered.

More information is available on www.nationaltrust.org.uk/cerne-giant

ASHLEY BLINDS
curtains • shutters • awnings

GET
READY
FOR
SUMMER

perfectly made to measure



FREE home appointments, expert survey and fitting
www.AshleyBlindsUK.com **01929 498028**

Swanage & Purbeck Concierge Ltd

Specialists in home and lifestyle management



Do you find yourself
wishing you had more
hours in the day?



Rediscover your freedom
by leaving your daily
responsibilities to us.

Telephone: 07488 301008

Email: enquiries@swanageandpurbeckconcierge.com

Website: www.swanageandpurbeckconcierge.com

TALK TO US

any time you like, in your own way,
about whatever's getting to you

CALL: 116 123 (FREE)

EMAIL: jo@samaritans.org

WEB: samaritans.org

**VISIT US: find your
nearest branch on
our website**



A registered charity

Trevor Chadwick Memorial Update



Images: Above: Sculptor, Moira Purver, in the studio. Others: The statue in progress.

This is a significant stage in the life of the sculpture of Trevor Chadwick and a very poignant moment for sculptor, Moira Purver. After a year of work, it is now ready for the mould to be made.

As the mould for Trevor is completed at the studio, it's time to plan for the next exciting stage. The mould enables us to preserve the form of the clay sculpture, but of course the aim is to be able to install a life size bronze of the sculpture in Swanage to celebrate the amazing actions of Trevor Chadwick, who put his own life at risk to save the lives of 669 children.

The mould will be made by the Talos Art Foundry, with the clay sculpture being separated at the arm of the child standing. This is to enable him to be taken to the foundry for the mould to be made and the mould of Trevor and the baby will be done 'in situ' at Moira's studio in Langton.

Moira said, "At first when I was asked to do it, I never thought it would happen. Then I read several books and thought: 'this has to happen because he was such an amazing man, incredibly brave and warm and this helped put the children at ease.'"

Moira went on to say that she wanted to capture the powerful connection between Trevor and the children - she only wanted three figures and wanted them to relate to each other and to be something intimate because Trevor wasn't a formal man.

The project has been funded by donations up to this stage but now we need to raise the money for the final bronze and for the installation of the sculpture. This requires us to raise a further £85,000 to complete the project.

We really hope that you will want to help us celebrate the life of Trevor who was a quite unique and amazing man. Any donations can be made through the website of the Trevor Chadwick Memorial website: <https://trevorchadwick.uk/donate/>

There is also a bronze of the original maquette (which is ¼ life size) - Trevor's height in this is 188cm (18 ½ inches). It would be good to know if you would consider buying a bronze of the maquette as part of our fundraising. It would be priced at £3,600 with everything above the foundry costs going to the project.



HARMANS CROSS VILLAGE HALL

Rural wedding reception venue in beautiful surroundings

We still have a couple of vacancies for 2021 autumn weddings and a few 2022 spaces available - please call or email us now to avoid disappointment.

The Harmans Cross Village Fete

We are still planning on running our fabulous annual fete on Monday 30th August!

We are now taking bookings from stallholders (closing date: 31st July)

We will be accepting a maximum of 60 stalls, so don't delay! Book your stall today!

Hall Bookings for Events & Meetings

We are welcoming enquiries for hall bookings - please contact us for details!

www.harmanscrosshall.co.uk
or phone 07769 826994



Pinks
ELECTRICAL SERVICES LTD

NOT JUST ELECTRICIANS THAT CARE...

WE CAN OFFER A ONE STOP SHOP FOR ALL YOUR KITCHEN & BATHROOM INSTALLATIONS OR PROJECT MANAGE FULL REFURBISHMENTS OF ALL SIZES.

GIVE US A CALL AND LET US SHOW YOU HOW GOOD IT CAN BE BY THINKING PINKS!
01929 423024 • 07748 034849

Checkatrade.com
Where reputation matters

APPROVED CONTRACTOR

Registered Competent Person Electrical

Unit 17, Anvil Centre, Prospect Business Park, Swanage, BH19 1EJ

Fundraising Year Gets Off To A Flying Start!



Emma Regan, centre, with her team of walkers who completed twenty-six miles

Dorset's Douch Family Funeral Directors have raised more than £2,700 for the Dorset and Somerset Air Ambulance by completing a sponsored walk. Five teams from across the group's seven branches completed up to 26 miles in a day for their charity of the year.

They included 'Wendy's Walkers', whose eldest member was 79 and managed to smash her ten-mile target.


Wearing branded t-shirts they also raised awareness about the importance of the air ambulance. The group's target for the year was £3,000, so they have raised nearly all of it in one go and hope to exceed it with other fundraisers.

Emma Regan who organised it said: "It was one of our first fundraisers for our new charity of the year and we raised more than we'd hoped. We'd like to thank everyone who sponsored us and made all the blisters worthwhile. Six of us walked the length of a full marathon and the others did half that – but it was a warm day and tough.

"The air ambulance is extremely important and receives no funding from the government or national lottery. Every life-saving mission costs approximately £3,000, so every penny raised is put to good use – and money from the walk is still coming in. We had twenty-three staff, family and friends taking part. They included Chris Baldry, who saw the walk advertised on Facebook and wanted to take part.

"As ever they all really put in a lot of effort to complete it and find sponsors. We have other fundraisers planned for the year and obviously hope to raise as much as possible for this great charity."

The funeral group has seven branches which are in Wimborne, Ferndown, Wareham, Poole, Swanage, Blandford and Corfe Mullen.



HEIRLOOMS
JEWELLERS & SILVERSMITHS
Wareham

Expertly curated
antique, pre-owned
and modern
jewellery

Tuesday - Friday
9.30am - 5pm
Saturday
9.30am - 2pm

BESPOKE COMMISSIONS
VALUATIONS • REPAIRS
ENGRAVING • RESTRINGING
CLOCK & WATCH
SERVICING

21 South Street, Wareham, BH20 4LR
01929 554207
WWW.HEIRLOOMSJEWELLERY.CO.UK

RICS

CARPETS SELECT



- **SIT BACK**, relax, put your feet up and choose a carpet, vinyl or laminate flooring away from the crush of the high street ... You can with Carpets Select ... the carpet store that comes to your door!
- With over 45 years combined experience Steve Wheller and John Cropp are sure to meet all your flooring needs.
- As members of the Guild of Master Craftsmen Carpets Select pride themselves as being able to provide both quality workmanship and outstanding service, as well as extremely competitive prices.
- Call Steve or John the Master Craftsmen of the carpet world.

ALL MAJOR CREDIT CARDS ACCEPTED

01929 460005

THE GUILD OF MASTER CRAFTSMEN

Out Of The Blue

Dorset Police



Well here we are, the first month of the summer season and looking forward to the longest day. As ever, we still need your feedback and would encourage more of you to get in touch. If you can find five minutes, please use this link and have your say: <https://www.surveymonkey.co.uk/r/PurbeckEmail> Listening and

acting upon what you have had to say enables us to target both our resources and patrol.

So, what have we been up to? Well, during the period April 07 2021 – May 07 2021, we dealt with a total of 615 occurrences in Purbeck, of which 190 were recorded crimes and resulted in 48 arrests. There were also 87 occurrences of road traffic collisions.

We have seen an increase in thefts from vehicles, in particular the theft of Catalytic Converters. Please be vigilant and report any suspicious activities immediately. For general advice regarding theft from unattended vehicles - <https://www.dorset.police.uk/help-advice-crime-prevention/home-property-belongings/vehicle-crime-removeitlockit/>

- Remove everything of value from the vehicle prior to arriving at your destination; thieves will see you hiding things in the boot, glovebox or foot well.
- Take items with you if possible, including any removable stereos and Sat Navs and wipe off any marks left by your Sat Nav.
- Ensure your windows and doors are secured and secure before you walk away.
- Double check the central locking has worked and the vehicle is secure.
- Keep driving documents and personal correspondence at home.
- Where possible park your vehicle in a busy, well-lit area.
- Never leave your keys in the vehicle, even if you are just leaving

WORKING
TOGETHER
for a safer community

PACT

Partners And Communities Together

it for a few seconds.

Finally, if you need to contact Dorset Police please call our Police Enquiry Centre by calling 101 or email 101@dorset.pnn.police.uk. Always call 999 in an EMERGENCY when there is a risk of HARM or a CRIME in progress. Alternatively, call the free CRIMESTOPPERS line on 0800 555 111.

You can also use our website to report a number of issues, from full crime reports to lost property; just use the following link <https://www.dorset.police.uk/do-it-online/>

Don't forget to visit us on our Facebook page [Facebook.com/Purbeck-police](https://www.facebook.com/Purbeck-police) and Twitter - @PurbeckPolice – we really value your support and comments. You can also see our latest priorities and up and coming events at <https://www.dorset.police.uk/neighbourhood-policing/purbeck/>

Why not register on Dorset Alert? By registering for the free Dorset Police community messaging alerts, you will receive information on: local crime and incidents where we believe that sharing information with you will help to prevent further offences occurring, crimes and incidents where you may be able to help by providing vital information, current crime trends, crime prevention advice and Safer Neighbourhood activity and opportunities to meet the team. You can also receive news from our partner agencies such as Dorset Fire and Rescue Service or Trading Standards and community safety messages.

Purbeck Neighbourhood Policing Team

Results For May 2021 By-Elections And Referendums

People have voted and the results are in for the May 2021 town council by-elections and neighbourhood plan referendums in Dorset. An election also took place for the Police and Crime Commissioner.

Although elections did not take place this year for Dorset Council councillors (they happen in 2024), some town council by-elections and neighbourhood plan referendums were held.

The results were as follows:

Town council by-elections and successful candidates

Lyme Regis Town Council – Tara Dawn Webb (Turnout 37.3%)

Weymouth Town Council – Wyke Regis Ward – Becky Suzanne Blake, Labour Party (Turnout 35.4%)

Weymouth Town Council – Preston Ward – Peter Dickenson, Conservative Party (Turnout 52.7%)

Shaftesbury Town Council – West Ward – Virginia Rhiannon Edwyn-Jones, Independent (Turnout 37.7%)

Swanage Town Council – Swanage North Ward – John Michael Bishop, Conservative Party (Turnout 45.2%)

Ferndown – Ferndown Central Ward – Grant Clifford Parrott, Local Conservatives (Turnout 35.1%)

Neighbourhood Plan Referendum results:

Arne – 479 votes in favour, 36 against (Turnout 47.2%)

Blandford+ – 2,054 votes in favour, 394 against (Turnout 25.9%)

Chickerell – 1,006 votes in favour, 184 against (Turnout 24.7%)

Milton Abbas – 162 votes in favour, 32 against (Turnout 42.3%)

Portland – 1,653 votes in favour, 346 against (Turnout 21.5%)

Puddletown – 341 votes in favour, 45 against (Turnout 33.5%)

Shaftesbury – 1,556 votes in favour, 216 against (Turnout 26.9%)

See @DorsetCouncilUK on Twitter for detailed results.

Full details of the results will also be available later.

Next steps for neighbourhood plans

The neighbourhood plans will now be taken to Dorset Council Cabinet, where councillors will decide whether to formally adopt them (or 'make' them). If formally adopted, the neighbourhood plans will be used to inform decisions on planning applications in the area.

When adopted, neighbourhood plans become part of the development plan for an area. See the adopted local plans. They sit alongside a local plan and are considered in deciding whether or not planning permission should be given.

See more information about neighbourhood plans and the referendums

Police and Crime Commissioner election

An election for a new Police and Crime Commissioner (PCC) in Dorset was also held on 6 May.

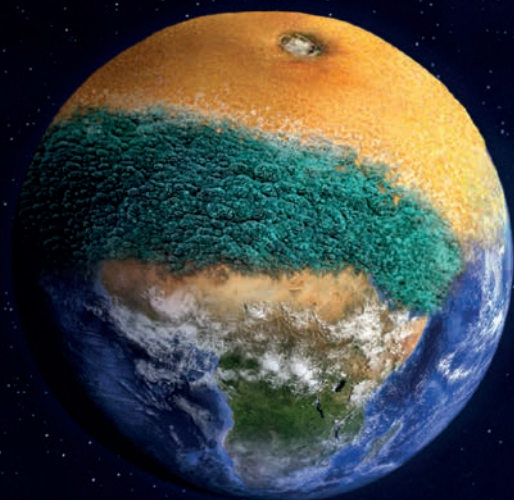
Results will be announced by BCP Council and will be shared on their website.

A PCC is responsible for policing across the county (covering both the Dorset Council and BCP Council areas). Find out more about the Dorset PCC.



CLIVE R. CRABB
07974 383159
clivecrabb12@gmail.com
 Waste Carrier License Holder

HOUSE REMOVALS, HOUSE CLEARANCES,
 SHED/GARAGE CLEARANCES, 'MAN & VAN' SERVICES,
 COLLECTION/DELIVERY TO & FROM AUCTIONS
 GARDEN CLEARANCE & GRASS CUTTING
 FLAT PACK FURNITURE ASSEMBLY



WASTING FOOD FEEDS CLIMATE CHANGE.

30% of global greenhouse gases
come from producing our food -
we can't afford to waste it.

It's time to act now.

lovefoodhatewaste.com



Supported by  **Dorset
Council**

wrap

Swanage Cricket Club



Swanage Cricket Club has seen an exceptional first month of the season with the Club welcoming both new and 'old' members back to the club.

The three Saturday adult sides and the Sunday team have all been in action with some outstanding performances from the club's thriving youth and ladies section in particular. All of the club's youth teams from the under-8s all the way through to the under-15s have all performed admirably.

The batting highlights have been from Freddie Long and Craig Wells who have both already registered centuries. As well as that, there have been half-centuries for Charlie Dyke, Simon Goldsack and Mike Nash.

With regards to the bowling, there has been some excellent performances by the following people:- Ron Barker, Jack and Tommy Battrick, Andrew Hancock, Ben Hodder, Steve Kent, Harry Long, Gary Marsh, Safia Nadaf, Sid Nash, Jacob Pope, Steve Ramsey, Ryan Stearn and Lily Wood.

For all of the other latest news/results, please feel free to visit our website:- www.swanagecricketclub.co.uk

You **can** get everything you want with your new carpet..

Spring Offer

80/20

Wool Carpet

From

£18.99

Sq mtr

**FREE
Estimates.
Full Fitting
Service.
Honest
Advice.**



Purbeck Furnishing

Tel: 01929 422703

61 Kings Road West, Swanage, BH19 1HQ

Prefer to shop at home? If you have problems getting to us, we will come to you...Call us to arrange a **FREE** home visit!

Need Help? We will arrange to move furniture, take up your old flooring and remove all the rubbish. Just ask for details.

Carpets : Vinyls : Karndean: Beds: Curtains: Blinds:

Wareham Town Council Update

Julie, our Gazette correspondent, details the goings on in recent council meetings.....



News from Wareham Town Council April and May

At the April meeting, Councillors observed one minute's silence in memory of Mrs Dawn Russell.

Councillor Cotton's motion, that the Town Council contact the owners of the land within the temporary fencing at the level crossing about removing the fencing and re-planting the land, was passed unanimously.

Questioned by Planet Purbeck, the Town Clerk stated that the Council does not use peat compost and does not use pesticides on open land. The Town Clerk was asked to investigate more environmentally friendly weed killer.

If the easing of Coronavirus restrictions went ahead as planned, the Corn Exchange was to be open for weekday bookings from 17th May. Councillors discussed how unlocking and locking of the Corn Exchange could be managed for evening and weekend bookings.

Councillor Schofield asked that his replacement on the parking issues working party, Councillor Gooding, ensures that members of the public who have been involved be kept up-to-date. In response to complaints about Hauses Field skate park, the Amenities Committee had delivered a questionnaire to neighbouring properties.

Forty-five of the forms were returned with fifteen asking for the removal of the skate park and thirty wanting its retention, albeit with improvements. In addition, a petition with 114 signatures in support of the skate park had been presented to the Council.

Since Wareham In Bloom was taken in-house by the Town Council, any separate activity and any fundraising should be under a separate name such as "Friends of Wareham In Bloom". The cost of the plants and planters comes out of the Town Council precept.

Essential and expensive repairs to the roof of 2 Mill Lane have begun. The Mayor of Wareham had pointed out that before setting a bench on North Walls, the permission of the Manor and Ancient Monument consent should have been obtained.

It turns out that depositing lumps of stone, as promised by the Westgate developers, beside the road comes under the Dorset Council policy on Art, Statues and Monuments on the Highway, which requires checks for safety and acceptability entailing extra cost and delay.

Councillors Keith Green and Malcolm Russell can call on lots of experience in their respective roles of Mayor and Deputy Mayor. At the Annual Council Meeting, which was brought forward to 5th May so that it could legally take place by Zoom, the Mayor named Dorset Guides and Dorset Scouts as his nominated charity.

Some Councillors had had cause to know the value of the Ambulance car and Wareham Town Council voted to work to keep it.

The date and agenda of the next meeting will be on the Council's website, www.wareham-tc.gov.uk, or 'phone 01929 553006.

TALK TO US

any time you like, in your own way,
about whatever's getting to you

CALL: 116 123 (FREE)
EMAIL: jo@samaritans.org
WEB: samaritans.org

VISIT US: find your
nearest branch on
our website



A registered charity

THE SWANAGE BOOKSHOP

35 Station Road, Swanage. 01929 424088.

STAYCATIONERS! We have an amazing range of walking books, maps, local history books and books on nature to inspire you!

IN STOCK: Dorset artist, Jenny Hunt with her delightful range of art, books, cards and mugs - ideal gifts!

We still order-in with next day delivery

IN STOCK:

'Wartime Purbeck' by Bob Bunyar

THE SWANAGE BOOKSHOP

35 STATION ROAD

01929 424088



www.editionone.co.uk

Credit/Debit cards and cheques accepted

M_J furnishing

15 West Street, Wareham, Dorset.

Tel: 01929 552773

Email: mjfurnishing@hotmail.com

Visit: www.mifurnishing.com



**New Carpet and
Hard Flooring Cleaning
Machines!
Now available for Hire!**

The New FiveStar
With Multi Rinse
Extraction
And Brush



The LW Hi-Tec

**Hard Floor
Washer and Drier
Perfect for L.V.T**





**DESIGN
SUPPLY
INSTALLATION**

fire BY DESIGN

WOOD | MULTIFUEL | GAS | ELECTRIC

FIND OUR SHOWROOMS

13A & 13D
RIVERSIDE PARK
WIMBORNE, BH21 1QU

CONTACT US

01202 888561
WWW.FIREBYDESIGN.CO.UK
INFO@FIREBYDESIGN.CO.UK

Raising Awareness Of Child Exploitation

Dorset Police and Devon & Cornwall Police launch campaign to raise awareness of online child exploitation

Campaign uses new animations to show children what they should do if they are contacted by criminals online

Devon & Cornwall Police and Dorset Police are working together to raise awareness of the risks to young people online and to encourage them to talk to a trusted adult if they are approached.

The campaign, called 'Looks sus? Tell us!', featured a series of animations which have been created to be shared on different social media platforms to raise awareness of the early signs of grooming. They are also designed to encourage children and young people to be suspicious of, and to report, particular kinds of approaches on social media or via other channels such as online gaming chat. There is also an animation aimed at parents to encourage them to have those difficult conversations with their children.

Alongside the animations, campaign web pages are being launched with more information and sources of help and advice for both young people and parents/guardians or professionals who work with children. The campaign focuses particularly on child sexual exploitation (CSE) where the NSPCC reports the most commonly used social media channel is Instagram. However, there are overlaps with other kinds of online grooming, to recruit for county lines for example, so one of the animations shows this kind of grooming too.

Despite the subject matter, the tone of the animations is kept light with cute, colourful characters. The 'child' character is not depicted as a victim, instead their quick thinking helps solve the problem. However, the animations do carry a serious message; that you never know who you're talking to online and that an online 'friend' may not be who you think they are.

T/Detective Superintendent Matt Bourne of Devon & Cornwall Police said: "Because we understand the challenges a young person might face in disclosing any unwanted attention online, we have also created an animation for parents and guardians as part of the campaign to encourage them to have those difficult conversations with their children."



PURBECK MOBILITY CENTRE
SALES · HIRE · SERVICING

As the weather warms up, rediscover the beautiful world outside

COME AND TEST DRIVE OUR ROLLATORS

MODELS FOR BOTH INDOOR AND OUTDOOR USE AND FOR ALL BUDGETS!

Meet the robust Topro Olympos - all-terrain rollator with shock-absorbing off-road tyres and seat. Now comes in small and medium frames and with backrest as standard.

NEW IN

The new Topro 5G and Best-seller Topro Classic lightweight, strong, folding rollators with seats. Both come with 10kg capacity shopping bag and backrest as standard.

Indoor 4 wheeled rollator with brake, basket and tray. Folds up for easy storage.

Come and meet us at St. Johns Hill, Wareham, Dorset, BH20 4NB
Disabled parking directly outside shop
Monday to Friday 9am-5pm, Saturday 9am-1pm.
www.purbeckmobility.com
shop@purbeckmobility.com
LIKE US ON FACEBOOK @Purbeckmobility
01929 552623



National Coastwatch

Eyes along the coast

Every now and then an event happens that makes you think some people have a guardian angel sitting on their shoulder. On the Saturday of the Early May Bank Holiday weekend, a young man fell off the cliffs at Handfast Point (Old Harry Rocks). Amazingly he survived and was pulled from the sea by some kayakers who just happened to be passing when the incident happened.

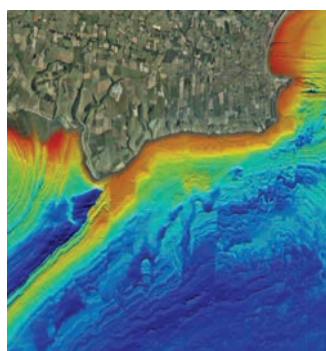
Within minutes, the Swanage Lifeboats were launched, and the Coastguard Rescue Teams (CRT) from St Alban's Head and Swanage were dispatched to the scene. The St Alban's team were involved because the Swanage CRT were already involved in an incident. The casualty was transferred to Swanage, by lifeboat, and was then transported to hospital. Unbelievably his injuries were three broken ribs, a punctured lung, and a lot of bruising!

The incident almost makes you ask "what if?": what if the tide was out more; what if the kayakers hadn't been passing; what if he hadn't had the foresight to push himself off the cliff as he fell? The outcome might have been much different if all those factors hadn't lined up. Perhaps the one thing that wasn't a 'what if' was the response of our fantastic Lifeboat and Coastguard teams. All volunteers, they can be relied on to answer the call day and night, every day of the year. Anyone who uses the coast or the waters around the coast owe these people a big thank you for their dedication.

Perhaps the biggest 'what if?' that springs to mind is what if he hadn't got so close to the edge? The cliffs around the Purbeck coast are part of what makes this area so fantastic, but they are not a place to be complacent or to take risks. Even as the rescue was happening, the CRTs had to move people away from the cliff edge!

What appears to be a solid cliff edge, often hides an overhang with nothing below it. Our cliffs are very dynamic and should be treated with respect. The footpaths along them are often uneven and slippery. It makes a lot of sense to wear suitable footwear and to keep well back from the edge.

The fascinating geology that makes up the Purbeck coastline continues under the sea but is usually hidden from view. A few years ago, Dorset Wildlife Trust, working with the Maritime and Coastguard Agency, Channel Coastal Observatory and National Oceanographic Centre, undertook a project to map the seabed around the Dorset Coast. The Dorset Integrated Seabed Survey (DORIS - pictured, below left) used a detailed form of echo sounding called multibeam bathymetry.



The survey revealed the complex geology that is the Purbeck seabed and enabled us to see the system of ledges and fault lines that cause the Peveril Point and St Alban's tide races. I'd recommend anyone with an interest to visit the Dorset Wildlife Trust's website (<https://www.dorsetwildlifetrust.org.uk/doris>).

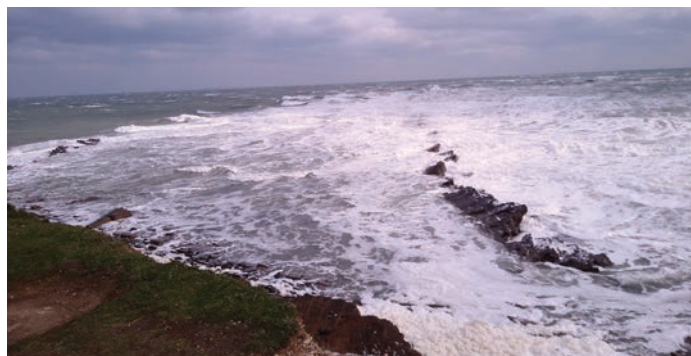
The ledges are formed from the tilting of the rocks millions of years ago and create an obstruction to the tidal flow. When the tides are running fast both headlands have a tongue of white water spreading out from them. The

rocks at Peveril Point are relatively close to the surface and to avoid the race, vessels should keep to the east of the Peveril Ledge buoy.

On a visit to Swanage, Thomas Hardy referred to them as "... sinister ledges of limestone jutting from the water like crocodile's teeth". While local vessels often know when to go inside the buoy and how close to the shore they can get, there have been several incidents where yachts have caught their keels on the ledges.

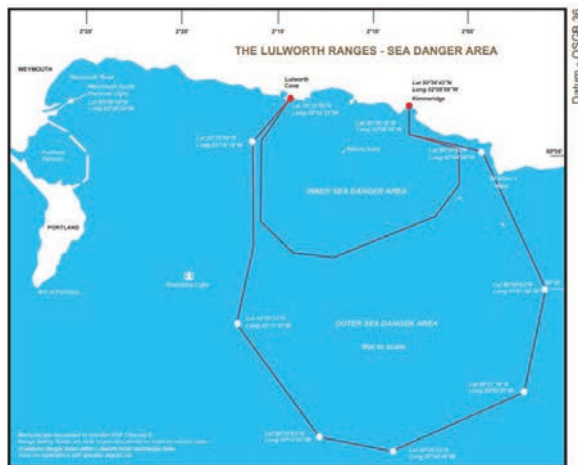
We have also had cases of canoeists and paddleboarders getting caught in the race and being swept into Durlston Bay. Unless you are experienced, a good rule of thumb is turn left across the bay rather than right towards the Point.

In contrast, the ledges at St Alban's are much deeper and, in some parts,



plunge down a vertical cliff face to fifty metre's deep. They extend a considerable distance offshore and that can mean that vessels have to head out to sea to avoid the rough water. For smaller vessels there is, however, a relatively sheltered passage that hugs the cliffs. Not surprisingly, it's known as the 'inner passage'. Despite being an easier route, it can still be quite lumpy on a strong spring tide!

When heading west, you soon hit calm water once in the lee of St Aldhelm's Head, but very soon come across the Lulworth Firing Ranges. When the tanks are firing there is an exclusion zone that can extend up to six miles south of the ranges. The Range produces a notice to mariners which gives details of the range area, firing times and how to contact the range safety boats. (If you stray inside the exclusion zone you may find the safety boats contact you pretty quickly!).



The notice can be downloaded from Weymouth Harbour's website (<https://www.weymouth-harbour.co.uk/links/>). The detailed firing times for a month can be downloaded from the Gov.uk website. Alternatively, you can also check by giving the St Alban's Lookout a call on Channel 65. This is the dedicated NCI radio channel and can be used to contact any of our lookouts.

As the summer progresses, more and more of us will be taking part in activities along the coast, either on land or on the sea. Taking simple precautions such as having the appropriate clothing and equipment, and making sure craft are serviceable, can mean that these activities are enjoyable and safe and do not need the intervention of the emergency services.

Hopefully as restrictions decrease, we will be able to welcome visitors back to our stations where we can tell you about our work and give you local information. If you're tired and thirsty after a long walk, the lookout at St Alban's does tea and biscuits (prepacked at the moment!) on bank holidays. An alternative way for water users to contact us is via Channel 65. All you need to do is preface the call with the station name.

This is NCI St Alban's Head and NCI Swanage, listening on channel 65, NCI out.



Loving your Garden

BE IN WITH A CHANCE OF WINNING:

- ☀ PIZZA OVEN WORTH £300
- ☀ HANGING EGG CHAIR WORTH £175
- ☀ GARDEN FURNITURE WORTH £250
- ☀ OTHER GARDEN GOODIES

 **Lewis-Manning Hospice Care**

Get your tickets from
lewis-manning.org.uk

Charity Registration No.1120193
Terms and conditions apply, visit our website for more details. Players must be 16 and over. UK residents only.

‘Loving Your Garden’ Launch



Lewis-Manning Hospice Care

Lewis-Manning Hospice Care launches ‘Loving Your Garden’ campaign and partners with Dorset horticulturist David Hurron

Lewis-Manning Hospice Care has launched a brand-new campaign called ‘Loving Your Garden’. The initiative will run for four months, from 4th May until the end of August. The charity hospice is encouraging everyone to fall in love with their outdoor spaces this spring and summer. With the help of David Hurron, acclaimed gardening journalist and associate editor of BBC Gardeners’ World Magazine, and the charity’s fantastic prize draw, all of Dorset will be sure to achieve a space they love!

David Hurron said, “For me, gardens and growing spaces are not just somewhere to grow plants, but they are all about people and memories. They help to forge links between the generations and allow us to grow plants that remind us of loved ones, relations and friends. And these memories are all the more important during end-of-life care, which is why I am delighted to be supporting the Lewis-Manning Hospice Care ‘Loving Your Garden’ campaign which is all about sharing our special places in our local area.”

Area Fundraiser Vicki Gray advised: “We are really excited to be launching ‘Loving Your Garden’. It’s an opportunity for people to showcase and celebrate their favourite garden spaces, whether that be a garden, a kitchen windowsill, balcony, prized allotment or a public space that inspires them. We will be asking the public to share images of their favourite spaces on social media using the hashtag #LovingYourGarden

“We are delighted that last year’s Glorious Gardens judge and Dorset horticulturist David Hurron is supporting the charity again.

“Each month there will be a specific focus and theme; how gardens can help to promote mental health, physical health, social and environmental health.

“With David’s help we will also be providing monthly videos to support our themes. He will be offering advice, hints, tips and guidance to

supporters to enable and encourage them to further develop, enjoy and love their gardening spaces. We all know after the challenging year we’ve all experienced how important being outdoors is and the mental health benefits it brings. Video content will include items such as how to invite wildlife into your garden, making your garden eco-friendly, staying fit in the garden and much more.

“As part of ‘Loving Your Garden’ we will be running a Summer Prize Draw, with some fabulous prizes including a garden dining set, bistro table and chairs, a hanging egg chair, an Ooni pizza oven, plus many more garden goodies.

“We are extremely grateful for the generosity and support of local companies, including Dunelm, Eco Sustainable Solutions, Fire in a Box, Bex Triggs Yoga and WilsonPT, who have donated prizes for the prize draw.”

Tickets for the prize draw cost just £2 a ticket and can be purchased from the website lewis-manning.org.uk/loving-your-garden

#LovingYourGarden

SELF STORAGE UNITS

From 10ft x 6ft up to 15ft x 16ft
For furniture, classic cars, documents

Insured & Alarmed

At East Stoke, Wareham

www.purbeckselfstorage.co.uk

Call 07836 369969



JUNE FRITH
07507 933219
 info@swanageflorist.co.uk
Swanage flowers
for every occasion
Birthdays, Weddings,
Funerals, Events

Ferry 'Delighted' To Announce Fare Rises

Following an application by The Bournemouth-Swanage Motor Road & Ferry Company to the Department for Transport in early 2020, to increase the maximum tolls chargeable, the Sandbanks Ferry Company is delighted to announce that the application has been approved.

Jason du Toit, General Manager of the Sandbanks Ferry Company, said: "We are pleased that after much consultation and a Public Inquiry, our application has been approved.

"These small incremental increases will allow us to continue to maintain our current vessel, the Bramble Bush Bay, to a high standard whilst allowing the company to set funds aside in the Ferry Replacement Reserve for a new craft in 2032."

Following the outcome of the Public Inquiry held earlier this year, the table below sets out the toll charges for all classes with effect from 00:01 Monday 17 May 2021.

The Ferry Company is pleased to be able to keep many of these increases below the maximum set by the Department of Transport.

Sandbanks Ferry Toll Cards (SFTCs) are available free of charge from the Ferry Office and the Toll Booths on Ferry Road. Further details can be found at <https://www.sandbanksferry.co.uk/tolls/discounts>.

For any further enquiries on how to take advantage of this offer please contact the Ferry Office.

Visit the Sandbanks Ferry Company at www.sandbanksferry.co.uk, follow us on Twitter at @sandbanksferry or on Facebook at www.facebook.com/sandbanksferry

		Until Sun 16 May 2021	17 May 2021 until 31 March 2022
Class 1	Pedestrian	£1.00	£1.00
Class 2	Pedal or Motor Cycle	£1.00	£1.00
Class 3	Passenger vehicle < 16 persons (Cars)	£4.50	£4.75
Class 4	Passenger vehicle > 16 persons (Coaches)	£9.00	£9.50
Class 5	Goods vehicle < 3,500kgs (Cars)	£4.50	£4.75
Class 6	6 Goods vehicle 3,500kgs - 20,000kgs (Trucks)	£9.00	£9.50
Class 7	50 tickets for Pedestrians	£45.00	£45.00
Class 7b	100 tickets for Pedestrians	£85.00	£85.00
Class 9	50 tickets for cycles	£45.00	£45.00
Class 9b	100 tickets for cycles	£85.00	£85.00
Class 10	10 tickets / passes for Motor Cars	£36.00	£36.00
Class 11	50 tickets / passes for Motor Cars	£170.00	£170.00
Class 11b	100 passes for Motor Cars (limited offer)	£295.00	£295.00
Class 12	10 tickets / passes for Goods Vehicles (Trucks)	£72.00	£72.00
Class 13	50 tickets / passes for Goods Vehicles (Trucks)	£340.00	£340.00
Class 14	10 tickets / passes for Buses & Coaches	£72.00	£72.00
Class 15	50 tickets / passes for Buses & Coaches	£340.00	£340.00



ADVERTISING

**HELPING PEOPLE
 SELL STUFF TO
 OTHER PEOPLE
 EVERYWHERE**

01929 427644 - www.villageinn-swanage.co.uk
 1.5 miles from Swanage

OPEN FOR BUSINESS!



We are now open and are pleased to be able to welcome our customers back!

Booking is preferred indoors.
 Please wait to be seated.
 Table service only.

OPEN ALL DAY FOR DRINKS
BREAKFASTS: 10am - 11.45am
LUNCH: 12 noon - 2pm
EVENING MEALS: 5pm - 9pm



LIVE IN CARE SERVICE



*A modern, personal and cost effective
 alternative to residential care*



Our Live in Care Service

- One-to-one care
- Stay in the comfort of your own home
- Personalised care package
- Privacy
- Dignity & independence
- Every day can be how you want it to be
- Develop a personal relationship with your Bluebird Care Assistant



Call your local team

01929 500 515

purbeck@bluebirdcare.co.uk



INTERIOR AND EXTERIOR PAINTER AND DECORATOR

- All aspects of painting & decorating undertaken
- Domestic, new build & commercial
- Qualified with 30 years experience
- First class finish



- FREE written quotation
- Fully insured - NO VAT
- No job too big or small

CALL GAVIN ON:

07977 047314 or 01929 471704

Email: g.lewis515@btinternet.com





ISLE OF PURBECK GOLF CLUB



We're Open Daily!

Open to the Public - Everyone Welcome

Breakfast 8:30am - 11:30am

Bar Menu 11:30am - 4:30pm

Restaurant Menu 12:00 pm - 3:00pm

Sunday Roast 12:00pm - 3:00pm

Our Sunday Roasts Are Back

EVERY SUNDAY FROM 12PM - 3PM

2-Course Meal £21

3-Course Meal £25

**Fathers Day
20 June**

Don't miss any occasion to get the family together. Book early to avoid disappointment.

Why Not Join?

Memberships Available
Golf and Social

Please check our website for details
or contact our pro shop on 01929 450354
or proshop@purbeckgolf.co.uk

Booking Advised Smart Casual Dress

For more information please visit www.purbeckgolf.co.uk
email iop@purbeckgolf.co.uk or call 01929 450361

The Purbeck Transport Strategy

The Transport Strategy was submitted to Dorset Council on 19 February 2021. A response was received on 29 March and this was circulated, a reply agreed and sent. The DC view was that many of the proposals were already in hand or planned. The general feeling of PTAG members was that progress was slow or non-existent and that DC should be adapting to changing circumstances, in particular the climate crisis and increasing pressure of visiting traffic and development.

Bus Services

PTAG has supported efforts by a group in Wareham St Martins to arrange a bus to serve the holiday parks. Following positive discussions with bus operators, More Bus has announced a Breezer 31 via the Wareham Holiday Parks, Wareham, Bovington (Tank Museum and Monkey World), Wool, Winfrith and Lulworth, from 29 May. The Damory operated Breezer 30 restarts from 29 May from Weymouth to Swanage via Lulworth. The First operated Jurassic coaster X52 runs from Bridport to Bovington via Weymouth and Lulworth from 30 May and the X54 from Weymouth to Poole via Lulworth, Winfrith, Wool and Wareham, runs year-round, but on its summer timetable from 30 May. Full details can be found on www.travelinesw.com (thanks to Friends of Wool Station)

PTAG has been in discussion with the other Dorset TAGs about the Dorset Council response to the Government's Bus Back Better initiative. Consultation has been promised with the TAGs and other groups on the Bus Improvement Plan to be developed.

20 mph limits

Several parish councils in Purbeck are keen to put in place 20mph limits through their villages. The Dorset Council criteria are difficult to meet and appear to be out of step with national guidelines. Following an initial on-line meeting, including Dorset Council, a separate group has now been set up for Dorset, as part of the national '20s Plenty!' campaign. (Dorset@20splentyforus.org.uk) It is understood that Dorset Council intends to review the Speed Limit Policy - which is outdated - to reflect Dept for Transport guidance. PTAG is pressing Dorset Council for consultation on this review. Contact: Nick Ward, PTAG Chair (nick.ward@myphone.coop)

**BECOME
A FRIEND OF
SWANAGE PIER**

...and help to secure
the Pier's future for
generations to come.

One year's membership

just £24



To join, visit
swanagepiertrust.com
or call us on 01929 425 806



Blast From The Past!

This month, A Decade Ago...

Looking back at the cover of the June 2011 edition is almost like peeking into another world after the year we've all just been through; happy faces at the Royal Wedding party, details for the 'Corfest' festival in the village of Corfe Castle and Tankfest Evolution - a packed day with crowds enjoying the thrill of tanks and military vehicles showing off their skills.....

Well, at the time of writing, we are very much hoping that life is returning to normal, as much as possible - slowly, slowly....!

In June 2011, the villagers of Corfe Castle organised 'Corfest', which ran from Friday 10th June for a full week and offered a wide variety of activities and events for the whole family, in and around the village and castle.

We published three full pages detailing all the exciting activities planned, which included music and dance in the castle grounds, crafts and produce fairs, pet and dog shows, children's entertainers and a big BBQ and a village 'It's a Knockout' competition! The festival was supported by a wide range of village retailers and service providers, making the event a real community affair, enjoyed by all. Sadly, Corfest seems to have disappeared over the subsequent years - possibly something to consider reviving?



Swanage folk were delighted in May 2011 when they happened upon Liam Gallagher and (then) wife Nicole Appleton meandering around the town on a day out together. Local photographer, Kate Cross, captured a stunning picture of them outside the Photographer's Lounge, which at the time was based in Swanage High Street.

Gazette editor, Nico Johnson, didn't believe the rumour that Liam was hanging out by the town library and in nipping out to put the rumour to bed, she ran literally straight into Liam round the corner from

the Gazette office! (pictured, above, outside Georgian Gems).



Our June 2011 front cover also featured a stunning picture of local hairdresser, Peter Flynn (with Dermot), dressed to impress in order to celebrate the wedding of Prince William and Catherine Middleton (married on 29th April 2011). Many Purbeckians got together, dressed up in their finery and partied to celebrate the next generation of the Royal family.

Street parties were held throughout the region, with neighbours, friends and families getting together, enjoying a picnic and generally having a rip-roaring time. On the left is the full page we published in June 2011, showing a selection of the party pictures we were sent by the community.

The team working day and night to get 'The Swanage School' agreed, built and opened reported in June 2011 that the new school would hopefully be situated at the site of the old Grammar School in Northbrook Road, Swanage. At the time, then-owners, the Welfare Dwellings Trust, said they would gift the old school site to Education Swanage in return for permission to build houses on the remainder of the site.

Education Swanage had recently welcomed a surveyor from Partnerships for Schools, who toured the building. It was thought to be suitable for the new school and was 'in very good condition'. Many of the original features remained, including wooden floors and the science lab, complete with

The **Purbeck** Gazette

June 2011
Issue no. 137

20,000 Copies:
Swanage to Dorchester,
Lulworth to Bere Regis

POLICE NEWS updates online at:
www.purbeckgazette.co.uk

Corfest

Corfest Programme. Pages 40,41,42

Your Royal Wedding Party Pics! Page 11

TANKFEST EVOLUTION
25TH & 26TH OF JUNE
TankFest Evolution. Page 26

Swanage Hospital Newsletter. Page 46

FUJIFILM FILM & DIGITAL PRINTS

50 PRINTS FOR ONLY £5.00

Swanage Post Office, Kings Road, SWANAGE. BH19 1ER 01929 422 461

Tawny's
FINE WINE • MEAT & FISH • BUTCHERY • GARDEN • EVERY DAY

ENQUIRIES & BOOKINGS 01929 422781
32 HIGH STREET • SWANAGE www.tawnysonline.co.uk

J.J. Taxis
4 and 6 seaters available
Special rates for long distance journeys

01929 427755
Email: info@jtaxi.biz

Garden Design Landscaping

- Paths • Drives • Patios • Fencing
- Lighting • Walls • Lighting • Decking

R. Harvey
01929 553705 • 07976 222887
www.harveybuild.co.uk

original worktops and sinks. Of course, some work and modernisation would be required, so Education Swanage began sketching out how the building would fit with the planned curriculum and what extra facilities would be needed.

Swanage waved farewell to Bob and Jill, who'd said goodbye to Swanage Post Office after six years at the helm. They passed the baton to Mick and Tracey from Poole. Mick's son, Liam, now runs Swanage Post Office as Mick and Tracey stepped down a couple of years ago.

The Swanage Coastguard team held a presentation evening at Swanage Bay View to mark fifty years of service between two Coastguard Rescue Officers. Coastguard, Ian Brown (pictured below left) was awarded his twenty-year service medal by Norman Smee (Coastal Safety Manager, HM Coastguard) and John Bentham (pictured below right) received the clasp to his long service medal (thirty years).





WPM Residential Lettings

If you need to Let or want to Rent, contact WPM.
We offer a personal service to Landlords & Tenants

15c Commercial Road, Swanage. 01929 426200
Web: www.wpmlettings.co.uk Email: wpmlettings@gmail.com

Dogs Welcome In Purbeck Shops!



Hello Gazette Readers!

I am Andy of The Courtyard Studio - Art in the Heart of Swanage, Tilly Mead, Commercial Road, Swanage. Since the shop opened in November 2019, I have been welcoming dogs with a water bowl outside and treats inside and dogs are welcome to come in.

In the 2021 lockdown, I saw that Weymouth and Portland had a scheme with a common sticker to show which businesses were dog friendly and asked them if we could have a group for Swanage and Purbeck.

It is now set up on Facebook and I have started visiting businesses with said stickers (pictured, left).

Since getting the stickers, twenty-two local businesses have already signed up. I will be ordering a second batch of stickers, so if you are a business owner who welcomes dogs and would like to take part, please contact me at the shop (Mon, Tue and Sat every week) or email me at: andy@andyknillart.com.



Purbeck Valet

We are now fully reopen again!
We're back to our usual opening hours:

Open: 9am - 4pm, Mon, Tues, Weds & Fri
9am - 1pm, Thurs & Sat

Alterations, domestic & trade full laundry service - all with a smile!

73, High Street, Swanage, Dorset.
01929 424900 www.purbeckvalet.co.uk



JAMES SMITH
FUNERAL DIRECTORS

SERVICE

Broad shoulders. So you don't have to carry the weight alone.

TEL. 01929 422 445
OFFICE@JAMESSMITHFUNERALS.CO.UK
JAMESSMITHFUNERALS.CO.UK

over 100 years
Douch Family
Funeral Directors
understanding • care • value • service



The Friends of Wareham Hospital are so pleased and proud that Wareham Hospital has been used as the Purbeck Covid Vaccination Centre since January 2021.

Almost 30,000 members of our Purbeck community have received their Pfizer or Astra Zeneca vaccines in our local centre which is in the top three Nationally for % of patients treated.

The Purbeck Primary Care Network, which brings together our 6 local GP Practices, has done an excellent job for us during Covid-19 vaccinations, as have the small army of volunteers who have worked alongside the health care teams acting as Stewards (inside and outside the hospital), vaccinators and Tea makers.

An amazing Purbeck Team effort which has been so well received by those attending the Centre. We thank you all.

We also thank the dedicated staff of Wareham Hospital who have kept the many services provided at the hospital running during the difficult times of the last year.

Many never knew there was a hospital in Wareham - I think that may have changed now!

Please do support our Friends Group. We welcome new members and financial help as we support Wareham Hospital and all Purbeck Services.

Maggie Hardy, Friends Chair. Charity No 252073
(Gazette Article space funded by well-wisher)

Business



Redmayne Bentley

Equity Exposure

When we think about equity exposure in portfolios, whether in the UK or overseas, there are several common ways that this can be achieved. First, there is direct equity exposure – this means purchasing shares in individual companies. These could be listed on the London Stock Exchange or on other overseas exchanges.

There is also exposure via collective investments such as an investment trust, unit trust or OEIC (Open Ended Investment Company) which could be invested in a specific sector such as mining or technology or a geographic area.

The area could be narrow, such as an individual country, wider such as the Asia Pacific region, or could be a globally-focused fund. Funds may also have an investment objective such as high income or growth. With any collective investment you are relying on the fund manager to select the best investments and make changes to the fund when they feel that it is sensible to do so.

The fund's performance can be compared to similar funds and it should be easy to find information on the fund's aims, performance record and underlying holdings. Holding collective investments is generally more expensive than individual shares as the holder is paying for the ongoing management of the fund.

It is, however, a useful way of obtaining a diversified investment and is usually the most practical way of gaining overseas equity exposure in a portfolio as, depending on the fund chosen, it can be based in Sterling and can be classified as a UK investment, which makes the tax position more straightforward.

Exposure can also be gained via a tracker fund or an ETF (Exchange Traded Fund) - this typically involves passive exposure to a specific stock market index and the investment will mirror movements in that index. This tends to be a cheaper option than a collective investment where the managers are actively managing the fund.

Any of the above ways can be used to introduce an equity element into a portfolio whether you have your investments professionally managed or manage them yourself and many of the investments in all three categories can be held in an ISA.

If your portfolio is professionally managed, your investment manager will also ensure that, overall, your investments fall within your desired risk level and meet your objectives and they would also tend to align the asset allocation of your portfolio to a chosen portfolio index such as one of the MSCI PIMFA Private Investor Indices.

Kate Spurling, Investment Manager, Redmayne Bentley, Tel: 01202 714 450

Redmayne Bentley is authorised and regulated by the Financial Conduct Authority. Members of the London Stock Exchange. The Redmayne Bentley Bournemouth and Poole office is located at 139 Commercial Road, Ashley Cross, Poole, Dorset, BH14 0JD. Follow us on Twitter @redmaynebentley and visit us on the web at www.redmayne.co.uk/bournemouth



Selling a property?

With the property market booming, a timely reminder of a change in Capital Gains tax rules for declaring the disposal of a residential property.

- The gain or loss has to be declared online via a dedicated HMRC portal. Do not leave this until the last minute, if you are selling a property set up the account now.
- It must be submitted and paid within 30 days of the completion of the sale
- If you currently file a personal tax return, or any of the entries are estimated, you will still need to complete a further return to include the actual entries
- There are penalties and interest for late filing or payment

Normal rules continue to apply to the declaration of non residential (commercial properties or land).

If the property has been only used as your main residence then there is no gain to declare.

Capital gains tax rules are complicated in some cases and you should take advice if you have any concerns.

MKL Accountants Limited

Chartered Certified Accountants
Herston Cross House, 230 High Street
Swanage BH19 2PQ

T: 01929 425552

E: mail@mkla.co.uk

W: www.mkla.co.uk

John Garner Copywriting

- Brochures
- Website and SEO copywriting
- Features and articles
- Press releases
- Blogs
- Email content
- Direct marketing letters
- Newsletters
- Proofreading



johngarnercopywriting.co.uk
johngarnercopywriting@gmail.com
Mobile: 07827 871261
Office: 01929 556245

Local Financial Advice

Investments, pensions, protection and mortgages for your family or business.

Quilter
Financial
Advisers

For a free initial consultation
contact Ian Futcher on:

M: 07581282440 E: ian.futcher@quilterfa.com

Working From Home? Find Out What You Can Claim....

With thousands of workers forced to work from home since March 2020, setting up a desk from the kitchen table has become an attractive option for companies looking to reduce overheads and slash rents.

According to the Office for National Statistics, almost half of British workers were working away from their office or factory last June, with many companies now planning to embrace a mix of home and office working.

This sudden change in circumstances has meant many people have taken on an unanticipated amount of running costs. Electricity, telephone charges, Wi-Fi and even tea and coffee all add up and come at the expense of the homeworker. However, if you are working from home, you may be able to claim tax relief for some of your bills.

Here, Victoria Pearson, a Partner at Perrys Chartered Accountants, explains what you can and can't claim if you are working from home.

My office or factory is closed and I have to work from home. What expenses can I claim?

If you have to work from home, because your office or factory is closed, then you can claim tax relief, but only for the things to do with your work. These include business telephone calls or the additional cost of gas and electricity for your work area.

However, if you use things for both business and private use, such as broadband access, then you cannot claim for these.

I have decided to work from home permanently. Can I claim tax relief?

You cannot claim any tax relief if you choose to work from home. If you decide to work from home voluntarily, there may be other expenses you are entitled to.

For example, if you set up a business from home, and you operate as a sole trader or partnership, you can include your business costs in your self-assessment tax return. These include a proportion of the cost of things such as council tax, heating, lighting, phone calls and broadband.

How do I make a claim for tax relief?

If you are eligible for claiming tax relief and you normally complete a self-assessment tax return form, you can make your claim using this method. Otherwise, you can complete a P87 form online via your Government Gateway account. If you haven't got a Government Gateway account, you can complete a postal form.

Alternatively, from April 2020 your employer can pay you up to £6 a week (£26 a month) to cover any additional costs if you have to work from home. For previous tax years, you can be paid £4 a week (£18 a month).

Do I need to keep records if I claim tax relief when having to work from home?

The good news is you will not need to keep any records to claim the working at home tax relief so long as your claim does not exceed the £6 a week entitlement from April 2020 (or £4 a week for previous tax years). However, if you believe your costs are a lot higher than this you could claim more, but you will need to provide proof of your expenditure.

What other expenses can I claim for?

Whether you're working from home or not, you might be able to claim tax relief for other expenses.

For example, if you use your own money for things that you must buy for your job and you only use these things for your work, such as:

- Uniforms, work clothing and tools
- Vehicles you use for work
- Travel and overnight expenses
- Professional fees and subscriptions
- Buying other equipment

You cannot claim tax relief if your employer either gives you all the money back or provides an alternative, such as giving you a laptop but you want a different type or model.

For some claims you must keep records of what you've spent, such as receipts or invoices. You have four years from the end of the tax year in which you spent the money to make a claim.

Tax can be a complicated business so it is always worthwhile seeking the help of a professional, such as a qualified accountant, to help ensure your claim is correct.



Specialist legal advice and solutions
For whatever life brings - at home or at work



Private Client Solicitors who are always on your side

Our specialist team can assist with Wills, Trusts, Estates,
Lasting Powers of Attorney and Probate

Contact us today:

✉ enquiries@battens.co.uk

☎ 01929 768720

🌐 www.battens.co.uk

🏠 Wareham, Dorchester, Yeovil, Sherborne,
Castle Cary, Bath and London

Lexcel
Legal Practice & Quality Mark
Law Society Accredited

HOME

MOTOR

**STILL HERE, ON YOUR DOORSTEP AND
HAVE BEEN THROUGHOUT COVID!**

SWANAGE INSURANCE BROKERS Ltd

Authorised and Regulated by the Financial Conduct Authority

Tel: 424228

Email : office@swanageinsurance.co.uk

CONTACT OUR HELPFUL AND EXPERIENCED STAFF

TRAVEL

BUSINESS

Whizzbits
Computer Sales & Support

- PC and Laptop support & repair
- Virus removal and prevention
- Internet setup (wireless/wired)
- Microsoft Windows issues resolved
- Computer hardware sales & upgrade
- PC Health & security checks
- Data recovery & backup
- 1-2-1 Tuition



Call Pete on:

01929 421989

or 07900 992110

Email: info@whizzbits.co.uk

www.whizzbits.co.uk

JULY EDITION DEADLINE

NOON, 10th June

EMAIL your copy to:

ed@purbeckgazette.co.uk

ELLIS
JONES
SOLICITORS

Legal advice for tomorrow. Today.

We are a leading regional law firm with offices across the South Coast and London.

Call us on 01929 422233

ellisjones.co.uk

Bournemouth | Canford Cliffs | Ringwood | Swanage | Wimborne | London

Lasting Powers Of Attorney Thrown Into Spotlight



Swanage law firm Ellis Jones Solicitors has warned that the 'heart-breaking' plight of TV presenter Kate Garraway has hammered home the importance of Lasting Powers of Attorney (LPA).

Kate has spoken on Good Morning Britain of her difficulties in managing her husband Derek's affairs without an LPA in his year-long battle against Covid. She also highlighted their struggle in a recent hard-hitting TV documentary.

Associate solicitor Nicola Hall said it exploded the myth that a person's next of kin will automatically be able to take medical and care decisions for them if they are unable to do so.

Nicola, who specialises in wills, trusts and probate, said: "Many people will have seen Kate's heart-breaking story. It highlighted the difficulties she faced by not having Lasting Powers of Attorney in place to manage her husband Derek's affairs. She was unable to access funds to manage his care or refinance her mortgage and she didn't even have the legal right to access his medical notes due to data protection restrictions because he didn't have a Property and Finance Lasting Power of Attorney."

A Power of Attorney is a legal document in which one person gives another the right to make decisions on their behalf. There are two types: covering

property/financial affairs and health/welfare. Nicola said: "Research by Solicitors for the Elderly shows that 65 per cent of people think our next of kin will automatically be able to make medical and care decisions for us if we are unable to do so.

"However, unless a Lasting Power of Attorney for Health and Welfare is in place, this will not be the case. Whilst there has been a rise in the number of enquiries made about Lasting Powers of Attorney during the pandemic, only 22 per cent of people actually have one.

"Kate Garraway's situation has shown that the need for Lasting Powers of Attorney can arise at any age and, to avoid a difficult situation like this, it is important to ensure that the correct documentation is in place."

Nicola added: "According to Which? 22,000 Lasting Powers of Attorney are rejected every year, so it is essential that the documentation is correct. Crucial, complex and difficult decisions can be involved so it is important to get the right advice."

Kate Garraway is a presenter on ITV's Good Morning Britain. She documented her husband's battle in a programme called Finding Derek. Nicola is a fully accredited member of Solicitors for the Elderly and a full member of Society of Trust and Estate Practitioners. Ellis Jones is a full-service law firm with its Swanage office in the High Street in the town centre. It also has offices in Bournemouth, Canford Cliffs (Poole), Swanage and Wimborne as well as London.

www.ellisjones.co.uk

**PURBECK
COAST** 101.2FM

YOUR COMMUNITY RADIO STATION, BROADCASTING FROM THE COMMUNITY,
FOR THE COMMUNITY AND BY THE COMMUNITY. LISTEN LIVE TO DAVID
HOLLISTER ONLINE ON DRIVE TIME, WEEKDAYS, FROM 4-6PM

www.purbeckcoast.com text: 07553 236500 **01929 424424**
hello@purbeckcoast.com Purbeckcoast Purbeck Coast

ADVERTISING

**HELPING PEOPLE
SELL STUFF TO
OTHER PEOPLE
EVERYWHERE**

From The Kitchen Garden...



By Regula
Wright,
Godlingston
Manor Kitchen
Garden

Bread & Cheese Wheel

After too long a time of dry and cold weather, we finally got the rain the crops and grass so desperately needed. Looking up from sowing seeds, the hills look so much greener after a good soaking, although the ground is still rock hard. It was incredible to start ploughing in very early spring while the soil was just about dry enough and to finish making most seed beds, leaving dust behind.

Anyway, I got on with sowing into modules and pricking out into ever bigger trays. There's always a bit of trepidation when the time comes to plant out those unblemished young seedlings. While they're in the polytunnels, they grow in near ideal conditions...fresh compost, out of the wind, plenty of water and light. However, after hardening off and then planted into rows outside, life gets a bit tougher.

The night time temperatures can still be on the chilly side and can check their growth. The deer/rabbits/pigeons and mice also like to nibble my valuable plants and I need to protect them without increasing the time and hassle factor too much. Eventually, I have to make a decision, stick with it and get going planting out for days on end. This is also the ideal time to direct sow many of the vegetables I grow and before I know it, I'm running out of space...

Soon enough, the first sown crops are ready to harvest, making space for a later batch of something else. Apart from all the new plant life happening, my latest chicken run and new duck run are nearing completion and I can't wait to move them into their luxury environment and give the old space a good rest.

The polytunnel with terrible wind damage got skinned and although I've got a new skin ready to go on, I might just use the framework for now, stick some netting over it and use it as a deer and pigeon proof brassica space and with a bit of clever companion planting, I may even distract the cabbage white butterfly.

The second polytunnel is nearly all planted up with tomatoes, peppers and basil and the third still needs a bit of preparation as it empties out of baby plants in trays. This one is destined for my sweet potato growing trial.

The cows on the hill are mostly getting on fine, giving birth to some beautiful calves. Every time I'm in awe how the herd moves away from the

cow in labour, giving her space and privacy. As I'm checking them three times a day, I hope to spot if there's a girl in trouble.

In busy times like these, it's always good to have a quick lunch to tuck into. This bread and cheese wheel is perfect prepared in the evening, baked in the morning and still warm for lunch the following day.

Bread and Cheese Wheel - Ingredients:

- 200 ml warm water
- 200 ml warm milk
- 170 ml vegetable oil
- 10 gr. sugar
- 10 gr. dried yeast
- 1 egg white
- 550 gr. strong flour
- any cheese you like (cheddar, mozzarella, feta)
- sprinkle of black onion seeds
- 1 egg yolk

Method:

- mix all the dry and liquid ingredients together with a spatula until it forms a very soft dough then knead with your hands into a ball.
- leave the dough to rest in the mixing bowl and cover it up (for at least 30 minutes or overnight)
- stretch the dough out with your hands to fit a round baking tin
- cut the dough into segments with a spatula or dough card
- fill each segment with a cheese slab
- brush with the egg yolk and sprinkle on the black onion seeds
- bake at 180C for around 30 minutes

HIGH STREET CAFE

Great local food, just how you like it!

Join us for a superb full breakfast, cooked just how YOU like it, to order, using fresh ingredients.
Vegetarian options available

THE BEST BREAKFAST CAFE IN TOWN!
CLOSED ON THURSDAYS

3 High Street, Swanage. BH19 2LN. 01929 427542



Godlingston Manor



Kitchen Garden

Seasonal, freshly-picked fruit,
vegetables, herbs & cut flowers

...grown on your doorstep...

For more information,
contact Regula Wright on 07758 013230
regula@talktalk.net

Motoring

Love Nature? Stop Killing Animals on Our Roads Then!

During the past year and with the lockdowns we have all experienced, many of us turned to the natural world and immersed ourselves in gardens and outdoor spaces, enjoying birdsong, stunning skies and the occasional glimpse of a deer, badger, squirrel, rabbit, hare or fox. Literally within days of lockdowns easing, our roads have become littered with the corpses of the very animals people said they were gaining a lot from watching. It seems that once one steps into a vehicle and starts up the engine, that enjoyment of the living world evaporates and the mindless slaughter of the very animals we all enjoyed watching whilst struggling through the coronavirus situation, starts up in earnest.

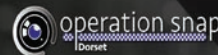
Well - in order to get somewhere a couple of seconds faster, you do not have to mow down a creature who may well have become used to quieter roads and lanes over the past year. If you've enjoyed nature in any form over the past year, then please, take those feelings into the car with you when you strap-in and remember that whilst smaller and seemingly less significant than humans, each living thing has a right to life and a right to be treated with respect.

Being crushed beneath car or van wheels is not a form of showing respect to any living creature. Quite the opposite. It puts all those sentiments towards nature, so beautifully voiced over the past few months, to shame. It's not only wildlife that's affected - recent reports state that domestic cats are being hit in ever greater numbers on UK roads, leaving families mourning the loss of a family member, seemingly due to someone simply not bothering to stop and wait a few seconds.

Of course, unavoidable accidents DO happen. However, many animals currently being killed on our roads are as a result of sheer impatience; the need to get where we're going faster. If you're not an emergency responder, then we can actually all spare a minute or two to give a creature a chance of survival - can we not?

Captured a driving offence on your dashcam or other device?

You can send your video or photos to us and help to keep our roads safe
www.dorset.police.uk/opsnap



Greystone Garage

- ✓ SERVICING & REPAIRS
- ✓ MOT'S CLASS 4
- ✓ TYRES

TEL: 01929 427775

WWW.GREYSTONEGARAGE.CO.UK



ST MICHAELS GARAGE

"THE PURBECK FORD CENTRE"
Valley Road, Swanage
tel: 01929 480221

2014/14 Fiat Fiorino 16V Multijet, No Vat, 85814 Miles, Diesel, Manual, 1.2 Litre, 3dr, Van, White. Air Bag, Remote Central Locking, Full Bulkhead, Service History, One Owner, Ply Lined, SWB.....£4,295

2020/20 Ford EcoSport Titanium 1.0 EcoBoost 125Ps, 1100 Miles Only, Petrol, Manual, 1.0 Litre, 5dr, Hatchback, Blue Lightning, Climate Control, Part Leather Upholstery, PAS, Anti-lock Brake System with Brake Assist, Alloy Wheels, Remote Central Locking, Cruise control and Speed Limiter, Front and Rear Electrically Adjustable and Heated Door Mirrors, Height Adjustable Drivers Seat, Reverse Customers, One Owner, Front and Rear Electric Windows, Sync3 Navigation with 8" Touch Screen, Reverse Cameraaaaa, Hill Start Assist, Automatic Headlights and Automatic Windscreen Wipers, Rear Parking Sensors.....£15,995

2018/67 Ford Fiesta Titanium 1.0 EcoBoost 100Ps, 30268 Miles, Petrol, Manual, 1.0 Litre, 5dr, Hatchback, Moondust Silver, Climate Control, Remote Central Locking, Cruise control and Speed Limiter, Service History, Front Electric Windows, Blind Spot Information, Reverse Sensors, , Electrically Folding and Heated Door Mirrors£9,495

2010/10 Ford Fusion Zetec Climate Automatic, Low mileage Automatic, 51803 Miles, Petrol, Automatic, 1.6 Litre, 5dr, Hatchback, Moondust Silver, Air Conditioning, ABS, Passenger Air Bag, Alloy Wheels, Remote Central Locking, Front Electric Windows, Service History, CD Player, Height/Reach Adjust Steering Wheel, Rear Parking Sensors, Multi-function Trip Computer.....£3,295

See all our stock at
www.stmichaelsgarageswanage.co.uk

"Motoring Locally since the 60s"



foleys

Vauxhall & German Automotive Specialists

Valley Road, Swanage, BH19 3DZ (Harman's Cross)
Tel: 01929 480215. Email: info@foleysgarage.co.uk

2016 (16) Vauxhall Viva SL 10, 5dr, in Light Blue, Leather Interior, Cruise Control, Climate Control, Electric Front Windows, Electric Mirrors, FSH, 15000 miles and only £20 a year Tax£6595

2016 (66) Honda Civic 1.8i-VTEC SR, 5dr, Auto, in white, Sat Nav, Bluetooth, Cruise Control, Front and Rear Parking Sensors, Rear Parking Camera, DAB Radio, Panoramic Roof, Electric Windows, Only 24000 miles, FSH.....£12,595

2017 (17) Nissan Note Black Edition 1.2 in White/Black, Black Alloys, Cruise Control, Bluetooth, Air Cond, Electric Windows, Electric Mirrors, FSH, 21900 miles, Only £20 Year Road Fund Licence.....£6995

2015 (15) Nissan Note 1.2 DiG-S Tekna 5 Dr in Blue, Sat Nav, Climate Control, Bluetooth, Cruise Control, Reverse Parking Aid, DAB Radio, Alloys, USB Connect, 1 Owner, FSH, £0 Road Fund Licence, 36000 miles.....£7595

2017 (66) Vauxhall Corsa Energy 1.4 5Dr in White, Apple Car Play, Electric Windows, Alloys, Cruise Control, Electric Mirrors, Bluetooth, DAB Radio, USB Port, Heated Screen, 1 Owner with FSH and only £30 Road Fund Licence, 24800 Miles.....£7595

2012 (12) Nissan Micra 1.2 Acenta 5 Dr in White, Sat Nav, Bluetooth, Radio/CD Player, Electric Mirrors, Electric Windows, Air Cond, Alloy Wheels, Only £30 Road Fund Licence, 50100 miles.....£3995

Natural Matters

Away From The Numbers (one for you Jam fans!)



By John Garner

Picture: Isle of Lewis, Hebrides, NJ

It's been a strange spring so far this year. Weather wise that is-nothing was really as strange as last spring all things considered. Last year, whilst most of us were hermetically sealed inside our houses and gardens, with just the occasional foray outside, the sun at least was conspicuous in its intensity to help us through the dark days of the first lockdown. Not really happened this year so far.

When the sun has shone it's been cold and when it hasn't, it's been wet. Northerly winds seem to be the problem. Occasionally we've had a whoosh of south westerly air and the mildness has been welcome, but the accompanying rains can put a dent in your outdoor activity.

Swanage and Wareham, our twin metropolises (yep that is the grammatically correct plural of metropolis) have been pretty busy as the shops and cafes open again. People generally seem to have become more adventurous and for some it would appear to be important to get back to something relating to normal. I've even had a pint or two in my local pub garden. Hmmm. Beer.

You can still escape the crowds if you're prepared to head into the countryside, but even these destinations will get busier as the restrictions are lifted. Purbeck should probably brace itself for a fairly intense summer as going abroad still presents a number of risks. Local campsites look full of vans and caravans. All good for local businesses, one would hope.

Out of Purbeck it's still pretty quiet. Once you get over the A35 into North Dorset, the roads become significantly less busy. Is this the answer for people in this area? Should we head north into the rolling hills of north Dorset or perhaps even over the border into...gulp....Somerset?

It's certainly very appealing to be in a very different area but still be reasonably close to home. Especially if the weather turns. A few years ago, I headed up to Scotland, replete with wet weather gear. It took about fourteen hours to get there, about the same time as it took to get to Switzerland the year before. Or the South of France the year after.

Scotland is a long way although it's a brilliant place, but mainly it's a long way. We were lucky that year. The sun shone on day one and the temperature got up to 22 degrees. Day two dawned and it was similar. On day three, we headed up a mountain and the temperature at the base on our return was 25 degrees. The evenings were warm. Day four, five and six continued in the same vein.

By day seven, we were eagerly peering out of the window hoping for a

dramatic Hebridean storm to come sweeping along the lock to liven up the relentless monotony of the daily sunshine. What a chore.

This was not normal. There was no sunscreen for sale anywhere. I saw no outdoor furniture or barbecues optimistically purchased and set out in the gardens that might suggest this was a regular occurrence. It was however, quite the most beautiful place and the equal of the two aforementioned destinations.

So, it was certainly worth it, but as I might have mentioned, it was an awfully long way and would have felt a very much longer way still if the rain had fallen for a portion of the stay.

Now I don't often let the weather put me off, but after a long journey and a long dark winter, I can use a bit of sun.

I also like new places so as stunning as Purbeck is, it's good to see some new places but maybe without going too far afield.

So, it's possibly time to explore new places but possibly places that aren't fourteen hours away. I cycled in Somerset a few years ago and it was really good. So that's an option. Exmoor is only a couple of hours from here,, so that could be done for a day or maybe two. The Isle of Wight is brilliant for another day trip.

It turns out that despite lacking the southern option (apart from the Isle of Wight) we are in a good launching point for lots of places that will almost definitely be less busy than here and possibly just as interesting and beautiful.

Now, you're probably thinking, why am I writing a column in a local paper, suggesting getting out of the locality and experiencing other places of interest that are practically on our doorstep and maybe not as good.

Well, it's all about sharing the wealth. We get this place for most of the year and we're very lucky to have it. It's a unique place.

But I also like to see places when they're not overrun so I'll be crossing county borders this summer to get to know some new places. I don't feel comfortable going to Europe yet, mostly because of the quarantine I might have to endure on the return. But I'm really looking forward to seeing new places close to home.

So close to home that I can come home and enjoy home if the weather isn't playing ball.



Holme for Gardens

• Your Local **Garden Centre** with knowledgeable staff • Large **Farm Shop** with Local Produce at its best • The **Orchard Café** with delicious Holme-made cakes, cream teas & lunches

There's no place like the Holme Amphitheatre for OUTDOOR EVENTS

- Sunday 6 June - PASTURES NEW
- Sat 10th & Sun 11th July - A Midsummer Night's Dream
- Friday 23rd July - The Tempest
- Saturday 21st August - Little Red & the Big Bad Wolf
- Tuesday 17th August - She Stoops to Conquer
- Monday 30th August - Alice's Adventures

**VISIT OUR WEBSITE
TO FIND OUT MORE**

www.holmeforgardens.co.uk/upcoming-events

Holme Nurseries Ltd, West Holme Farm, Wareham, Dorset. BH20 6AQ - 3 miles from Wareham
office@holmeforgardens.co.uk | www.holmeforgardens.co.uk | 01929 554716



Gazette Gardening

with Simon Goldsack

Sumptuous Salvias!

We are lucky enough to live in one of the mildest and sunniest locations in the country and so we are able to grow many beautiful and interesting plants that would not survive even just a few miles north of here.

One such group of plants are Salvias, more commonly known by their herb name, Sage. They are a large group of plants many with scented foliage which is not surprising as they are closely related to mint. However, it is the beautiful flowers which display for up to six months of the year that make them so attractive to gardeners.

Sages are best planted in full sun but will tolerate some shade. The varieties featured below are reliably hardy in Purbeck, as long as you apply a generous mulch of compost around the base of the plant before the winter chill sets in.

Prune back to the lowest pair of active buds in April, followed by a light trim in May to produce strong well branched plants with lots of growing points. Flowering starts in mid May and can continue to Christmas if there are no hard frosts. Wow, what value!

Holme will have a wide selection of excellent Salvias grown in Purbeck by our friends Bob and Gill. Many will also be planted in the Holme borders for you to enjoy in a garden setting. See you at Holme soon!



Above: Salvia jamensis 'Flammen'



Above: Salvia jamensis 'Melen'



Above: Salvia uliginosa



Above: Salvia 'Hot Lips'



Above: Salvia jamensis 'Pluen'



Above: Salvia 'Royal Bumble'



Above: Salvia 'Wendy's Wish'



Above: Salvia 'Black and Blue'



Above: Salvia 'Violette de Loire'



Above: Salvia 'Bleu Amor'



Holme Sawmill

Producers of Quality English Timber & Timber Products

Seasoned Hardwood Logs & Kindling

A wide range of timber in stock,
we can cut & produce to your specifications.

We specialise in beautifully crafted bespoke timber products

Tel: 01929 552480 Email: holmesawmill@yahoo.co.uk

Margaret Green Animal Sanctuary



Can you help?

Margaret Green Animal Rescue are in need of prizes for their summer raffle.

Are you a local business that can donate a day out or a meal for two? Then please consider helping with a prize.

The charity's raffle is a great way to raise funds for the animals in their care.

They can also take items such as wine, chocolates and hampers! So if you are having a clear out and can offer something to help please do get

in touch. The summer raffle will run leading up to the Dog Show on the 1st August, held at the Church Knowle Centre, with winners announced on the day.

Don't delay, they would love to hear from you!

Items may be able to be collected but either via post or drop off would be ideal.

Please contact the Community Fundraiser Christine on christine.rolfe@mgar.org.uk

DURLSTON

COUNTRY PARK & NATIONAL NATURE RESERVE



Durlston comes to life with a bounty of wildflowers and insects. One of my favourite plant's has pairs of conjoined leaves with a stem that pierces like a sword through its hilt. Its name, Yellow Wort, seems inadequate for such a fascinating form, so to me it is Hilt Wort or Piercing Wort! The lemon and custard-coloured flowers of Common Toadflax bloom beside the road just before the demonstration quarr. More yellow flowers include the spikes of Agrimony, Meadow Vetchling and Hay / Yellow Rattle.

Whilst the Bee Orchids display extravagant pink, black and gold flowers, the Pyramidal Orchids show pink forms, shaped as its name suggests. The former orchid needs be searched for, possibly upon Lighthouse Green, as does Dyer's Greenweed and the pink of Sainfoin.

Of course, these flowers attract pollination insects, including butterflies. Look out for the Adonis Blue, Common Blue and Small Blue butterflies, and the cocoons, appearing as swellings upon grass blades, of the Six Spot Burnet Moth caterpillars. Towards the month's end, the colourful day flying moths emerge with black wings with red spots, the latter warning predators of their being poisonous!

Offshore, it is worth keeping an eye open for passing pods of Bottlenose Dolphins, whilst off Peveril Ledges, in Durlston Bay or off Durlston Head, you may hear Sandwich Tern calls as they dive for fish.

Joyous June performances:

Whilst we are delighted to be able to again be offering some familiar events, we also have some special ones this month. Thanks to Artsreach, The Lord Chamberlain's Men will give an outdoors

performance of Macbeth. The UK's premier all male theatre company are to perform at 19:00 on Sunday 27th June. Tickets need be booked via: <https://artsreach.co.uk/event/the-lord-chamberlains-men-macbeth>

We welcome the return of the Cabinet of Living Cinema, who will be performing in the Pleasure Grounds aviary glade. Their performance "#100years: Enchanted Cinema" will be on the night of the Summer's Solstice (Saturday 19th June). Join them in optional 1920s attire, with music from the roaring 20s that accompanies a celebration of one hundred years of animation. Tickets need be booked via: <https://thecabinetoflivingcinema.org.uk/live-events/>

The aviaries glade is also the venue for 'The Woodland Clan Story': Live outdoor performance for families. A musical narration of the book, with original score performed by composer Chris Dickie. Bring a picnic and sing along with the voices of beak, bone, feather, and song. Although free, booking is required through Durlston.

In the Gallery:

From mid-June the Fine Foundation Gallery host's "Painting in the Parks - and other Adventures!" Antonia Phillips and Richard Wisbey explored all fifteen UK National Parks. Their two-month exploration is expressed in painting, prose, and prints.

We have more events for June and beyond so please visit the Events page on our website for more details. In addition, our printed events guide is now available to pick up and a range of outlets.

Visit the Durlston website: <https://www.durlston.co.uk/>

Visit the Seventhwave website: <https://7eventhwave.com/>



RECYCLED PLASTIC FURNITURE

Won't go mouldy or rot
Solid - durable – wear resistant
FREE recycled plastic shovel
with every order!

Cleans with a damp cloth
Bespoke designs welcomed
Looks just like wood!

Made locally - Delivered fully assembled



Call Adam or Nick on 0800 035 1470 for a personal service
sales@rplasticmatters.co.uk www.recyclingplasticmatters.co.uk

Animal Welfare - New Action Plan For The U.K.

UK launches first ever action plan to improve the welfare and conservation of animals at home and abroad

Animals to be formally recognised as sentient beings in UK law

Measures include banning the import of hunting trophies, prohibiting live animal exports for slaughter and fattening, cracking down on pet theft and puppy smuggling and banning keeping primates as pets

In a first of its kind, the Government has published an action plan for animal welfare that will revolutionise the treatment of animals in the UK and introduce measures to protect the welfare of animals abroad. Now that we have left the EU, the UK has new freedoms to further strengthen animal welfare standards and reinforce its position as a global champion of animal rights. The Action Plan for Animal Welfare, launched by the Environment Secretary George Eustice, will build on our existing world leading standards by recognising animals as sentient in law and committing to a range of new game changing welfare measures to protect pets, livestock and wild animals.

During a visit to Battersea Dogs and Cats Home, the Environment Secretary said that the Government would take a significant step forwards on animal welfare by formally recognising animals as sentient beings through a new Animal Sentience Bill that will be introduced to Parliament tomorrow (13 May), putting animal welfare at the very heart of government policy decision making.

The Action Plan for Animal Welfare also sets out how the government will:

Improve welfare for pets by:

- tackling puppy smuggling through changes to import rules
- introducing compulsory microchipping for cats
- cracking down on pet theft through a new government taskforce
- banning remote controlled training e-collars

Protect wild animals by:

- making it illegal to keep primates as pets
- introducing new laws to crack down on illegal hare coursing
- supporting legislation to restrict the use of glue traps

- funding wildlife conservation projects both at home abroad

Protect animals abroad by:

- banning the import of hunting trophies from endangered animals
- banning the sale of ivory by implementing the Ivory Act this year
- prohibiting the import and export of detached shark fins to protect the iconic shark species
- exploring a ban on the sale of foie gras
- banning the advertisement in this country of unacceptable low-welfare animal practices abroad – such as elephant rides

Improve welfare for farmed animals by:

- ending the export of live animals for fattening and slaughter
- introducing new measures to improve welfare during transport
- giving the police more powers to protect farm animals from dangerous or out of control dogs
- examining the use of cages for poultry and farrowing crates for pigs
- improving animal welfare at slaughter
- incentivising farmers to improve animal health and welfare through future farming policy

To deliver these reforms, the Government will be introducing a series of Bills in due course focusing on animal sentience, kept animals here in the UK and the welfare of animals. There will also be a series of non-legislative changes to promote animal welfare over the coming months, with a number of regulations due to be brought forward as early as this year.

The Government will also ensure that animal welfare is not compromised in all our future trade negotiations. Recognising the links between animal health and welfare and the health of our planet, the Government is also working closely with industry to transform future farming policy through the Animal Health and Welfare Pathway which will forge a new deal between government and farmers to promote healthier and higher welfare animals. The Pathway will pay farmers to improve animal health and welfare, reduce carbon emissions and slow the rise of anti-microbial resistance.

You stay up to date with all the latest developments by searching #ActionForAnimals.



Norden Farm Shop & Mini Garden Centre. Open 7 days a week

In stock : large range of roses – shrubs – perennials – bamboo canes – composts – Gravel - Flower & Vegetable seeds - Garden accessories - Pest control - Plant feeds and much more! New range of Spear & Jackson Garden Tools in stock.



Wide variety of bird feed, feeders & nest boxes in store. Animal & pet feeds. Equestrian feed and accessories. Local produce: honey, jams, chutneys, meat, ciders, ales and more! Free range eggs, inc. Quail, Duck, Goose & Bantam.



NEW! Hollis Mead Organic Fresh milk from our new vending machine on-site!

Find us on the A351 1/2 mile before Corfe Castle on the Wareham side. 01929 480098

Suttles Offer Discounts & Giveaways To Celebrate Chris' 70th Birthday!



3rd July 2021 marks Suttle's Chairman Chris Suttle's 70th birthday (pictured, left)!

So they are having seven weeks of discounts, competitions and giveaways finishing with a charity raffle to celebrate.

The Suttle family have been quarrying in the Isle of Purbeck since the 1920s, and it was in 1970, after four years working in Bournemouth that Chris Suttle himself started quarrying (after years of helping in the school holidays!).

Many years have since passed and Suttles, with Chris Suttle at the helm, now operate at

California Quarry and Swanworth Quarry in the Isle of Purbeck as well as over in Poole at their Manning's Heath Depot.

They also have their own fleet of lorries, plus a civil engineering arm and over one-hundred members of staff.

Check their social media to be involved with the many giveaways and competitions they will be holding over the next seven weeks! Raffle tickets are available now and the draw will be from the 28th June until 3rd July.

Money raised from the raffle will go to People First Dorset and People First Forum; two charities that help keep adults with learning difficulties stay connected and organise social events such as 'The Big Night Out'.

Happy birthday Chris from your community - have a great one!



Special Offer



Suttles Chairman Chris Suttle is turning 70 this July!

Use 'BIRTHDAY70' online or call us up to receive 10% discount on your next order*

Keep an eye on our social media for more offers & discounts!





Tel: 01929 439444

***Only available on bagged aggregates | Excludes delivery | Offer valid until 30th May 2021**

 Suttlestonequarries
  @suttles_group

Arts & Entertainment

Swanage Blues Festival

Words by Steve Darrington

Swanage Blues Festival is scheduled to return on 30 September – 3 October 2021. Along with the usual attractions, we are immensely proud to present an exclusive night at the Mowlem, showcasing the best of the British blues, soul and roots scene.

Younger guns they may be, but individually, all the artists involved are already making a significant mark in the industry, showcasing the quality end of UK-based blues, roots and soul.

Award-winning bluesman Connor Selby has already played Wembley Stadium at the behest of The Who, Welsh songbird Laura Evans' last four singles have been 'A Listed' on BBC Radio Wales, while fellow valley girl Jade Like The Stone has won public praise from the likes of Jimmy Page and Will.i.am.

Roots artist Hollie Rogers has already graced festival stages at Glastonbury, Black Deer, Cornbury Festival and more, whilst Melbourne-born Georgia van Etten is currently the fourth most played artist on Blues Radio, as well as recently appearing on the prestigious BBC 4 programme Loose Ends, securing BBC Radio 2 airplay as well as a BBC Radio London session with renowned tastemaker Robert Elms.

The five artists will appear with top-class band 'The Company' who, quite apart from their individual CVs (think Stevie Winwood etc), have themselves worked as the road outfit internationally for acts like Lucky Peterson (RIP), Grammy Winner Mike Farris, UK vocal royalty Jo Harman and others.

Full details of tickets and prices are unavailable at time of going to press.

For more information check the festival website regularly, or subscribe to the blues festival's monthly emailing newsletter which is also at www.swanage-blues.org





THE BLUES ROOTS SOUL COLLECTIVE









CONNOR SELBY

GEORGIA VAN ETTEN

JADE LIKE THE STONE

HOLLIE ROGERS

LAURA EVANS



with Full Band - "THE COMPANY" - featuring
Sonny Winslow * Nat Martin * Martin "Magic" Johnson * Stevie Watts

SATURDAY 2nd OCTOBER 2021

MOWLEM THEATRE, SHORE ROAD, SWANAGE

Information at www.swanage-blues.org

Purbeck International Chamber Music Festival IS ON!



We are thrilled to announce a live and world class line up of musicians and performers for this year's PICMF. Join Colin Currie, Stephen Kovacevich, Brett Dean, Tamsin Waley-Cohen, the Carducci Quartet, Jeanette Winterson and Artistic Director, Natalie Clein, for a weekend of programmes inspired by the idea 'Light'.

There will be music by Beethoven, Brahms, Haydn, Debussy, Brett Dean and much more, with deeply inspiring and uplifting words written and narrated by the one and only Jeanette Winterson. It will be a weekend of unique happenings, full of joy, life and light. For more information, tickets and locations, please visit: www.picmf.org

Purbeck International Chamber Music Festival is an exciting artistic development curated by Natalie Clein and her fellow musician friends.



The Festival takes place every year at the end of summer in the beautiful surroundings of Purbeck in Dorset in historic locations, churches, unusual sites and schools.

Our artistic director invites exceptional musicians, actors and lecturers from both home and abroad to make music with her in the intimate venues which the extraordinary Isle of Purbeck offers. The Festival has been growing since 2009 when we started under the umbrella of the Purbeck Art Weeks. This evolved into an annual event which brings together international stars and an enthusiastic audience. Festival's mission is also to nurture young talents. Every year, events for young musicians, families and children's concerts are planned with the aim of reaching out into the broader community.

Mowlem Aims To Become 'Cultural Heart of Swanage'

The Mowlem plans to reopen with a full programme from late July, but has been using the lockdown to consult local people and to improve its facilities and equipment.

1569 local people responded to The Mowlem's community consultation in February and March - a sample size of over 10% of the population of Swanage! The consultation asked for views on the future of the Mowlem Theatre and asked for opinions regarding past experiences as well as for ideas for the short term and the long term. The Mowlem's Trustees have been digesting the results of the survey and have thanked local people for taking the time to answer their questions.

"We want to make The Mowlem the thriving cultural centre Swanage deserves, which not only reflects the needs of the town throughout winter but also caters for our many valued visitors in our summer season."

The survey identified issues such as the need for more accessible facilities, better marketing and making it easier to book tickets. In their response the Trustees said "You identified that the facilities at The Mowlem needed improving. In particular people commented that The Mowlem needed better access, toilet facilities, decor, seating and temperature control. Some of these we have been busy trying to upgrade during lockdown but others are now on our list so thank you for your feedback."

"You wanted The Mowlem to have a strong brand, better communication and advertising so people know what's on. During lockdown we updated the website to enable you to book seats online and we now regularly post on Facebook and Instagram. People want to get to know us at The Mowlem and learn who we are. We want to be an approachable venue, eager to listen and learn from our community."

The Mowlem is an entirely independent charitable trust with a board of nine trustees, six of whom have joined in the last twelve months. Chaired by Matthew Haysom, the board has a wealth of business, educational and arts experience - you can read more about them on the 'About Us' page of the Theatre's website at www.themowlem.com where there are also more details about the consultation responses and how the Mowlem plans to respond to them.

THE MOWLEM

RE-OPENING JULY 2021

For the latest
updates on our
reopening programme
please follow us on
Facebook & Instagram
or sign up to
our mailing list at
www.themowlem.com

WITH SIGNED SONG AND BSL INTEGRATED INTERPRETATION AT EVERY PERFORMANCE

HORDERNCIANI LTD 100 SWANAGEREP#THEMOWLEM
MUSICAL MAGIC FOR ALL THE FAMILY

THE PRINCESS AND THE PAUPER

A NEW MUSICAL

ADAPTED BY DAVE SIMPSON
From the novel *The Prince & The Pauper* by Mark Twain
MUSIC BY TERESA BARLOW

THE MOWLEM THEATRE, SHORE ROAD, SWANAGE, BH19 1DD

17-21. 24-28 AUG 2021

FOR FURTHER DETAILS PLEASE SEE

HORDERNCIANI.COM



Exciting New Event For Children!

Festival On The Field Comes To Swanage



On Saturday July 17th, a new event is coming to Swanage! All are welcome to Festival on the Field, being held for the first time at The Swanage School.

Festival on the Field will be a fun, family day-out featuring live music and performances, arts and crafts, workshops, inflatables, science and technology, storytelling and more, along with delicious refreshments and a bar for the grown-ups.

Big Top Mania, who create the circus field at Camp Bestival each year, will be pitching their Big Top and entertainers will be on hand all day to delight with shows and circus activities.

Headteacher Jenny Maraspin says: "Our inaugural Festival on the Field is a chance to throw open the doors and welcome everyone to a great day of children's entertainment, music and good food."

"We are fortunate to be able to put this on at short notice in a year when so many of the larger events in Purbeck have had to be cancelled again and we are really looking forward to being part of the Swanage summer calendar."

Festival on the Field will run from 10am - 4pm on Saturday, 17th July. Entry to the event is free and includes Big Top Mania shows and most of the workshops.

Follow Festival on the Field on Facebook and Instagram for more information: @swanagefestivalonthefield

Community & Culture Fund Opens In Dorset

Want to make a difference to people living in your community? Apply to Dorset Council's new project and event fund for arts, museums, heritage, community, play and physical activities.

The new fund launched on 30 April to help kick-start new activities and projects supporting disadvantaged, marginalised or under-served groups in Dorset, including those affected by the Covid crisis.

Charities, parish councils, constituted community groups and cultural organisations can apply for sums between £1,000 and £5,000 to support projects that will make a social impact, improve access to high quality cultural activities and align with the priorities set out in Dorset Council's Plan.

Eligibility criteria and how to apply

- Applicants will need to meet the council's new eligibility criteria which requires:
- projects must be delivered in the Dorset Council area
- applicants must be able to raise at least 20 percent of the total project costs
- applicants must be able to complete their project within twelve months

More information about eligibility criteria and how to apply to the community and culture project fund is available online at www.dorsetcouncil.gov.uk/community-and-culture-project-fund.

Applications can only be submitted online and must be completed by Friday 11 June.

Cllr Jill Haynes Dorset Council Portfolio Holder for Customer and Community Services said: "I'm delighted Dorset Council has established this new fund to support community and cultural projects in our local area, despite ongoing pressures on our budgets."

Grant awards will be made in July with the expectation that projects will start in the autumn. Round 2 funding opens on 1 November 2021.

Find out more about the Community and Culture project fund and the application process at www.dorsetcouncil.gov.uk/community-and-culture-project-fund



SAY GOODBYE TO ZOOM! AND HELLO TO LIVE PERFORMANCE

The **CABINET** of Living Cinema

#100years Tour: Enchanted Cinema

Outdoor Cinema & Live Scores in Magical Locations

Durlston Castle, Swanage 19 June and 31 July 8pm

Bournemouth Natural Science Society 2 July 8pm

Hallr Wood, Somerton 10 July 8pm

TICKETS £15 per person:

cabinetoflivingcinema.eventbrite.co.uk



The Arts Return!

It's been a difficult year for everyone - now things are beginning to look up (at last!), we're really delighted to publish a pretty full arts and entertainment section for the first time in over a year!

So many events organisers, artists, craftspeople and local outlets have really struggled over the past twelve months and despite the worry and stress, they're all geared-up to welcome visitors once more. Purbeck generally offers-up an unbeatable array of festivals and events, stretching the usual tourist season out so that these days, we expect a full schedule of events to enjoy from March through to October most years.

With little or no public events held since 2019, it's hoped that as we slowly return to 'normal', event organisers will be able to get together and invite us all along to a good 'old fashioned' event - with other people!

In our May and June editions we have previously filled our pages with various arts and crafts folk as we celebrate Purbeck Art Weeks at this time of year, as well as the bi-annual Dorset Art Weeks. This year, Purbeck Art Weeks hope to bring you a slightly later festival in September, whilst still offering up a fabulous array of musical entertainment this month in place of the usual 'open studios'.

We're delighted to let you know that some of the artists and craftspeople who usually take part in either Dorset or Purbeck Art Weeks are open right now, are exhibiting, and are joyfully welcoming the public back in.

Over the following few pages, you'll find the cream of the local arts bunch, reaching out directly to you, our fabulous readers, to tempt you out and about once more this month - we vote you take them up on the offer!

From the team at Purbeck Art Weeks:



Get ready to enjoy Purbeck Art Weeks Festival 2021!

We are thrilled that we can go ahead with PAW Festival again this year and will be bringing it to you in a slightly different way.

It will take place in two parts, with five Festival concerts in the second week of August, followed in September by our celebration of the visual arts with Open Studios and exhibitions. The new dates for your diaries are:

August 7th – 21st for our five Festival concerts with some star performers.

September 11th – 26th for our Open Studios, illustrated talks and collective exhibition at Rollington Barn.

We have a wonderfully rich and varied feast of music and art lined up – with something for everyone, so do come along and enjoy this celebration of creativity across Purbeck.

First off the blocks are our concerts – and tickets for these can be booked through our website at www.purbeckartweeksfestival.co.uk/events from June 21st. We look forward to welcoming you back to live music!

To find out more about our August concerts, and our Open Studios and Exhibitions and other events in September, please go to www.purbeckartweeksfestival.co.uk.

To keep up to date with news and views please follow us on Facebook.



From the team at Corfe's 'Town House':

Nestled in the heart of Corfe Castle village, you'll find the Town House. Run by the wonderful and welcoming Sturch family, the Town House is a real gem.

Angela Sturch is a celebrated artist and has created some truly fantastic artwork based around the Isle of Purbeck and including some of our favourite and best known local scenes.

Angela's artwork is available on a wide variety of objects - from cards, t-towels, tote bags, jigsaws and much more - something for everyone!

This really is a great little arts and collectables shop to pop in and have a browse. Whilst you're in Corfe, you could always stop for a bite to eat at Corfe Bakery and then take a gander at the simply astonishing array of gin available at Corfe Castle Village Stores!

From the team at Burngate Stone Carving Centre:

Burngate has been in hibernation for the past year, conserving funds and preparing to reopen with a full schedule of carving courses, from two-

The Town House

The Square, Corfe Castle. 07427 003500



Come and see our re-vamped covid-friendly shop!!

Lovely new designs in Aprons, Cushions, Tote Bags and Tea Towels.

Also available from our website:

www.angelasturch.co.uk - many more delights are available exclusively in-store!

Come and be delighted! A warm welcome awaits!



**PURBECK
ART WEEKS
Festival**

**7-12 August
Festival Concerts**

**11-26 September
Open Studios
and Exhibitions**

2021

PAW FESTIVAL CONCERTS

Saturday 7th August | 6.30pm
Lady St Mary, Wareham
I FAGIOLINI, THE CHANGING SEASONS

Tuesday 10th August | 6.30pm
St James', Kingston
FIERI CONSORT/CHELYS CONSORT OF VIOLS
Part songs and fantasias

Wednesday 11th August | 6.30pm
Lady St Mary, Wareham
MICHAEL COLLINS (CLARINET) & LONDON WINDS
Wind Quintets

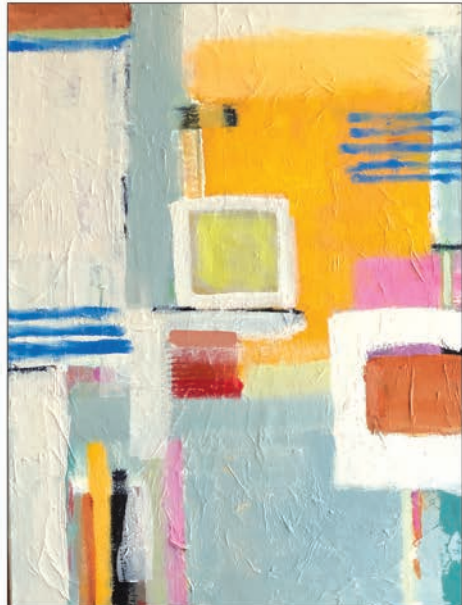
Thursday 12th August | 6.30pm
Lady St Mary, Wareham
RACHEL PODGER (violin) & SESTINA (vocal group)
Music by Bach, Tallis, Byrd and others

Saturday 21st August | 6.30pmt | St Mary's, Swanage
TROMBONE QUARTETS

TICKETS AVAILABLE AT:
www.purbeckartweeksfestival.co.uk/events
FROM JUNE 21



Mountains of Mourne, John Austin-Williams



Corner of my mind, Barbara Davis

Dorset Art Weeks 22nd May – 6th June

Venue 29 – Take 4 Artists

John Austin-Williams
Barbara Davis – Dick Hewitson
Joan Scott

The Fine Foundation Gallery
Durlston Castle, Durlston Country
Park, Swanage BH19 2JL

Also Venue 29: Heather Gibbons
Painting Purbeck. The Learning
Centre, Durlston, Swanage.

Both venues open daily
11am – 4.30pm



Land Song 2, Heather Gibbons



Fishermen's Cottages, Joan Scott

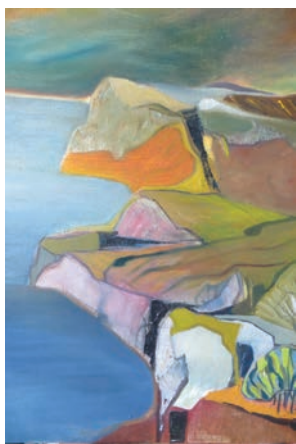


Pillbox with cleared ground, Dick Hewitson

hour 'have a go' sessions for the whole family (age eight upwards), to full day, adult only classes. The centre reopened on May 17th and has spaces available now for all classes, so don't hesitate! Book your space today and see what amazing carvings you can create!

Stone carving classes are actually a great way of relieving pressure and stress as the process of carving involves concentration and mindfulness, which is possibly something we could all do with after the past year. The centre caters for everyone over the age of eight - with no upper age limit! The stone carving tutors are patient and friendly, ensuring there is a creative, relaxed atmosphere for you to enjoy whilst you chip away.

This month, Burngate will also be hosting a wide variety of local arts and crafts makers, with an art and crafts fair running throughout June.



From the 'Take 4 Artists and Heather Gibbons at the Fine Foundation at Durlston Castle':

Visit the Fine Foundation Gallery to find four artists who follow their individual ways of working with paint and other materials to present a diversely captivating collection of works, derived from a range of subject matter, style, personal interest and inspiration.

With just four selected artists on show here, you can really absorb the impact of each work to get a 'flavour' of each artist's interpretation and working methods of their chosen subject matter. The Fine Foundation Gallery sets the scene, providing the perfect backdrop for this 'Celebration of DAW 2021'.

Heather Gibbons returns again to the Learning Centre at Durlston 'once more with feeling' - Painting Purbeck in her own indomitable style to portray the land shapes and coastline of her immediate surroundings.

Heather's work captures the raw essence of a certain wilderness, characteristic of this area. Interest in geology and strata of this coastline remain paramount to her work as it evolves through colour, line, shape and texture! Both of these exhibitions are a rewarding experience - it is well worth paying Venue 29 at Durlston a visit! (front cover image, this edition, by John Austin-Williams)

BURNGATE STONE CARVING CENTRE



We are Open!

**Purbeck Makers Market
Arts and Craft until 13th June
Tea and cake and views**

Next Courses coming up:

Saturday 19th June

Lettering & Engraving

Saturday 26th June

Adult All Day Stone Carving

*We are always happy to set up bespoke
courses for groups - get in touch for details*

**Stone Carving Lettering & Engraving
Stone Walling Family 'Have a Go' workshops**

01929 439405

www.burngatestonecentre.co.uk

Cathy Veale Exhibition



22nd May-
6th June

For details:
www.cathyveale.co.uk
07886451932

Venue 121
www.dorsetartweeks.co.uk



From renowned artist, Cathy Veale:

Dorset Art Weeks is one of the largest Open Studio events in the country, (but will be slightly different this year.) To make the event more flexible and safe for artists and visitors, all the opening days and times will only be featured digitally, both on the website and in the new app which you can download: www.dorsetartweeks.co.uk

Cathy Veale is a well-known local artist with an unmistakable style rich in luminosity and colour. Renowned for her large watercolour seascapes Cathy is attracting increasing acclaim with her stunning coastal scenes, taking inspiration from the beautiful Purbeck coastline.

You'll be able to visit Cathy Veale's home studio to view her latest original paintings and limited edition prints from 22nd May to 6th June, open 10am - 5pm. For more details visit www.cathyveale.co.uk



From Marita, artisan Purbeckian silversmith:

Marita runs the cosy and beautiful silversmithing shop in Swanage's back lanes area (BH19 1DF), 'Studio by the Sea'.

Marita creates unique silver designs to suit all tastes, offering bespoke necklaces, rings, bangles, pendants, earrings, toe-rings and

much more. Providing a personal service in true artisan style, Marita is your first-stop-shop for all things stunning, creative, beautiful and silver!

From Antonia Phillips: Painting in the Parks – and other Adventure!

Paintings : Prose : Prints

Celebrating our National Parks: from Dartmoor to the New Forest via Loch Lomond.

Original artwork created on site, responding to each landscape. Visual and written diaries. Prints and Cards.

Antonia Phillips and partner, Richard Wisbey, spent two months travelling to all fifteen UK National Parks as Ant and Dick's Excellent Adventure. Discover how the journey came about – and where it has led. 'Experience our epic Journey and how we did it - be inspired!'

Usually known for her artwork depicting Dorset landscapes, Antonia's journey took her through an amazing collection of coastlines, hills and dales, fields and lochs. All fifty-two paintings from her journey were created on location, within the landscape itself and a unique opportunity to discover the charm and character of each.

It was also Antonia's first time visiting many of them, she says: "It was an incredible, whistle stop tour and really focused the mind, to get a feel for each place we had to make quick decisions as to where I would set up my easel. Come rain or shine too!"

Now living over the hills in West Dorset, Antonia's artwork was a familiar sight in Swanage – in galleries, from one of her school art projects or the famous Pier Head mural.

Finally - after all that shopping, pay a visit to art-supporting 'Old Stables Surf & Turf Bistro in Commercial Lane, Swanage:

Alyson is very well-known in Purbeck for her exceptional customer service and her creative, inspired and delicious menus. The Old Stables welcomes you to take the weight off your feet after exploring the quality arts and crafts Purbeck has to offer. Enjoy a freshly-prepared top quality meal in a relaxing and comfortable environment right in the heart of Swanage and allow Alyson to remind you how real customer service feels!

STUDIO BY THE SEA



Handcrafted Sterling
Silver Jewellery

A wide range of designs available
Something to suit everyone!

Gift Vouchers available!
SUPPORT LOCAL!



35a Commercial Rd, Swanage. 07791 467919

antonia phillips Painting in the Parks

antoniaphillips.co.uk

paintings : prose : prints

2 months
3069 miles
52 paintings
15 National Parks

15 - 30 June

Fine Foundation
Gallery

Durlston Castle

Swanage

BH19 2JL

10.30 - 5pm

(closed 21 June)

**EXPERIENCE OUR EPIC JOURNEY
...AND OTHER ADVENTURES!**

ANT & DICK'S EXCELLENT
ADVENTURE BE INSPIRED

Old Stables Turf & Surf Bistro

June Opening Hours:

Wed - Sun, from 10am breakfast, lunches from 12 noon

Weds, Thurs, Fri, Sat - Dinner from 5.30pm

Sunday lunches from 12 noon

Please book!

Commercial Road, Swanage. Tel: 01929 421364



PURBECK VALLEY FOLK FESTIVAL

19-22 AUGUST

WEEKEND TICKETS £135 INCL. CAMPING

LOS DE ABAJO
LONDON/MEXICO

KATHRYN TICKELL & THE DARKENING

WATKINS FAMILY HOUR
SEAN AND SARA FROM NICKLECREEK

DREVER MCCUSKER & WOOMBLE
NOAH AND THE WHALE'S

MATT OWENS

ELEPHANT SESSIONS

JACKIE OATES & JOHN SPIERS - THE BREATH - LAURA CORTESE & THE DANCE CARDS
IAN PROWSE'S AMSTERDAM - EDGELARKS - GADARENE - CARDBOARD FOX - WARD & PARKER
CUT CAPERS - BENJI KIRKPATRICK AND THE EXCESS - TOPETTE!! - MONSTER CEILIDH BAND
NINEBARROW BAND - PONS AELIUS - CARRIVICK SISTERS - THE MODEL FOLK - OWL IN THE SUN
DANA IMMANUEL & THE STOLEN BAND - CEITIDH MAC - THE MAGPIES - PLANTEC - SALT HOUSE
INDIA ELECTRIC CO - THREEPENNY BIT - WAREHAM WHALERS - THE LAST INKLINGS - KATIE SPENCER
BUFFOS WAKE - KITTY STEWART - WE AFRO TALLAWAH - QUINNS QUINNEY + LOADS MORE!

MORE THAN JUST GREAT MUSIC...

CRAFT AREA
CROCHET - POTTERY - TIE-DYE - STONE CARVING
WILLOW WORKSHOPS - BLACKSMITH - ORIGAMI
CYANOTYPE - TRADITIONAL WOOD TURNING
PEBBLE PAINTING - PRINTING

KIDS' ACTIVITIES
STORYTELLING - GIANT SCRABBLE - FANCY DRESS - RHYME TIME - CRAFTS
TOY SWAPSHOP - THEATRE & GAMES WORKSHOPS - WISHING TREE - WELLY WANGING
HOOLA-HOOPING - TREASURE HUNT - SPACE HOPPER OBSTACLE COURSE
CIRCUS AREA: JUGGLING - UNICYCLING - DIABLOS - STILT WALKING - ACROBATICS WITH TUMBLE MAT

5 STAGES - 2 CEILIDHS - OPEN MIC - SESSIONS - WORKSHOPS - POETRY - FIRE SHOWS
 BEAUTIFUL LITTLE FESTIVAL ON A SMALL FARM WITH VIEWS ACROSS THE PURBECK HILLS & CORFE CASTLE - EVERYONE'S FAVOURITE FESTIVAL

WWW.PURBECKVALLEYFOLKFESTIVAL.CO.UK

Purbeck Valley Folk Festival - Family Fun!



There's fun to be had for all the family at Purbeck Valley Folk Festival, often attended by three (or even four) generations of the same families! Purbeck Valley Folk Festival's reputation for incredible and diverse music is well-known - there's something for everyone from hillbilly banjos to reggae, to singer-songwriters, to full on diddy dancing. What's more of a secret is everything else that comes with the festival. Although the festival prides itself on great music and respect for musicians, this is by no means just a music festival.

One of the stand-out things about PVFF as a festival is the incredible crafts area with artisan craftspeople demonstrating their talents and running workshops. What's even nicer is that each craft workshop is accessible to all by being affordable. Each workshop just covers the cost of the materials, and although you may be able to try some crafts which have more expensive materials, every workshop has a something that you can try for only £3.

From stone-carving, to pottery, to crochet, to wicker model making, to blacksmithing, there's always something you can try your hand at.



Then there's the kids' activities, and we're not just talking about bouncy castles. We have a brilliant arts and crafts tent for kids, truly fascinating and engaging storytellers, puppet shows with hurdy-gurdies (if you don't know this instrument, look it up!), a whole area of circus skills, rhyme time for babies and toddlers, a treasure hunt, and loads more.

Brand new for this year, we will be joined by Mad 4 Animals. They'll be bringing their displays of all sorts of creepy-crawlies, with fun and informative shows. After the shows, you have the chance to get up close and personal with snakes, tarantulas, scorpions, lizards, giant African snails, hissing cockroaches, turtles and many more.

The festival will be able to go ahead on step 3 of the government's roadmap out of lockdown (with Covid-secure measures), so as you can imagine, tickets are selling fast. Don't miss out, buy your tickets now!

Full weekend tickets are available now - Adults £135, Youth £70, Children £30. Locals can use the promo code BH19 or BH20 to get a 20% discount on all tickets.

For tickets and more info: www.purbeckvalleyfolkfestival.co.uk

Both pictures thanks to Trev Rich Photography

Health & Beauty

Matron's Round - Our Local Hospitals' Monthly Column

The Dorset Forensic Child and Adolescent Mental Health Service (FCAMHS) team has now moved into its new office in Wareham Hospital.

FCAMHS is a specialist NHS adolescent mental health service.

The team is made up of the following professionals:

- Consultant Psychiatrist
- Forensic Psychologist
- Team Administrator

We are experienced in working with young people under the age of 18 who reside in, or originate from, Dorset. We accept referrals from professionals when there is a concern about a young person's mental health with high risk behaviour that is causing concern.

Some of the young people might be involved with the criminal justice system, or are at risk of entering it. We focus on the needs of the young person and our interventions include:

- Consultation and formulation work, collaboratively with professionals, performing in depth assessment of risk of harm to others
- Using a trauma informed framework with the focus on protective

factors

- Offering advice on offence-related interventions, considering mental health needs
- Assisting in clarifying a diagnosis in complex and high risk cases

We will discuss different approaches that may meet the needs of the young person or their family/carers. Where appropriate we can offer ongoing support, remaining involved for as long as it is considered helpful.

We may or may not meet with the young person and their family/carers depending on the support needed. If possible we will discuss these plans with all involved.

In addition to the clinical and consultative role of FCAMHS, we also offer colleagues and external professionals strategic advice, service development and training relating to FCAMHS functions.

Until next time, take care and remember Hands, Face, Space, and Fresh Air.

Matron Donna



Swanage Hospital Minor Injuries Unit - Open 7 days a week from 8am - 8pm

If you have an injury, we're here to treat it!

Call us on 01929 422282. We're here for YOU, so use our services!

WAREHAM PHYSIOTHERAPY

HELEN GORDON, MCSP. HCPC registered



NOW BACK IN THE CLINIC!

Effective treatment from experienced chartered physiotherapists for spinal, limb, joint & muscle pain, sciatica, arthritic pain, whiplash, sports injuries & postural problems

CONTACT: 07765 129786

www.warehamphysio.co.uk

SHIATSU

Japanese Acupressure Therapy

by

Nichola Morgan

B.A. Dip. Seitai Shiatsu (Japan)

For Wholeness & Wellbeing

SWANAGE (01929) 427289



CHIROPODY

Rachel Ciantar

Registered with The College Podiatry & HCPC

Home Visits & Clinic Appointments

**Comprehensive foot care
Diabetic Patient Care**

**2 Daisy May Arcade, King's Road East, Swanage
Contact 07979 840542**

Key to
Hearing LTD

Home visit hearing care across Purbeck

Call today to book your appointment

t: 01202 511386

e: info@keytohearing.co.uk

w: www.keytohearing.co.uk



Keeley Salmon RHAD MSHAA

ARE YOU SUFFERING FROM PAIN OR DISCOMFORT?

We can help to heal your:

Back & neck pain..Sciatica..Tension..Headaches..Arthritic pain
Frozen Shoulder..Sports Injuries..Muscle Strains..Repetitive Strains
Poor Posture & much more

Practices based in Swanage & Wareham



**01929
766008**

Guy Ryder
Registered Osteopath

www.purbeck-osteopathy.co.uk

Simon's Wax & Relax

The No.1 Place
for Waxing or Trimming

SIMON'S
WAX
& RELAX

Tel. 07517 652395

Email: info@simonswaxandrelax.co.uk

Web: simonswaxandrelax.co.uk

West Dorset Mobile Foot Clinic



Nail Cutting, including Diabetic Feet, Cracked Heels, Fungal Infections, Corns, Calluses, Medical Pedicures, Warm Wax Therapy (For Foot & Joint Pain).

07903 722542 Roy Fox
07712 525058 Christine Fox

www.westdorsetmobilefootclinic.com

JULY EDITION DEADLINE
NOON, 10th June
EMAIL: ed@purbeckgazette.co.uk

Purbeck Chiropractic



McTimoney Chiropractic is a gentle and effective treatment for the whole body

It is proven to be effective in treating the following conditions:

- Back, neck and shoulder pain
- Muscular aches
- Pain, discomfort & stiffness in joints
- Arthritic pain
- Sports injuries
- Migraine

Effective treatment by an experienced Registered Chiropractor for a wide range of musculoskeletal conditions

Paul Hind BSc (Hons) Chiro, MSc, MMCA, LRCC
For an informal discussion, call Paul on:
07973 308829
www.purbeckchiropractic.com



Hello From Swanage Medical Practice

News from Swanage Medical Practice



We know that improving access to primary care services is a top priority for our patients. At the practice we give a lot of consideration to our operating procedures and constantly review how that provision affects our patients.

The pandemic, and the subsequent changes we have made to keep you and us safe, has highlighted opportunities to improve the way you access the appropriate support for your healthcare needs.

General Practice is changing with an emphasis on 'streaming' patients towards the most appropriate support for their need which isn't always a conversation with a Doctor.

Dependent on your enquiry it may be that you are better and more quickly served by getting support from our Paramedic, Advanced Nurse Practitioner, Nurse Practitioners, Practice Nurse, in-house or community Pharmacist, social Prescriber, self-referral to a community service or charitable support.

It will mean more convenient access to care and a stronger focus on population health and prevention.

With this in mind, and as alluded to in previous communications, the Sit and Wait surgery has become a:

Paramedic & Nurse led Duty Team

The Sit and Wait is now led by our Advanced Nurse Practitioner Shelley Basharan, Paramedic Tammy Fox, and Nurse Practitioners Ali Page/Jane Haysom. They'll deal with the urgent same day list with, if needed, support from a Duty Doctor who will be in place to assist if necessary.

This change will enable your Doctors to focus on continuity of care for their patients with more complex long-term conditions.

New Members of medical team

We'd like to welcome to the practice Advanced Nurse Practitioner Shelley Basharan who brings with her a wealth of clinical experience including prescribing and family planning, and is a valuable addition to our team. Welcomed also are two new GPs – Dr Andrew Macintosh who some of you have already met, joins us as a Partner and in time will take over most of Dr L Watson's patients, and Dr Linda Arthur who joins us as a salaried GP and will take on Dr Jason Clark's patients.

Most of you are already aware that Dr Watson and Dr Clark both retire soon. During this time of change we kindly ask that patients currently registered with Dr Watson and Dr Clark don't ask to transfer to specific doctors. We have a process of allocating patients to GPs in a fair and equitable manner. This ensures that no one GP has more patients than they can manage, given the time that they are here, i.e. full-time, part-time, etc. We hope you will appreciate that it is in everyone's interest for us to maintain an even distribution of patients among the GPs so that patients receive timely treatment and minimal waiting times for booked appointments.

Your sustained support during this unprecedented time has been tremendous and the high uptake of the Covid Vaccine amongst our local population is very encouraging.

With your continued co-operation the national effort to 'get back to normal' is well on its way!

Thank you from the Swanage Medical Practice team.

Train to be Wellbeing Coach

Swanage Retreats
Bella Vista BH19 1LS

Contact: Naomi
naomi@swanageretreats.co.uk
01929 422562



Advertise your Health or Beauty Service HERE!
See www.purbeckgazette.co.uk for rates

Spotlight Event Diary

Diary Entries are FREE if your event is FREE. If you charge, then it's £5 plus VAT per entry, per month. DEADLINE for JULY is noon, 10th JUNE

KEY: * = Start time not known or n/a; Ffi = for further information; Sw = Swanage; Wm = Wareham; VH = Village Hall, Telephone code 01929 unless otherwise stated.

JUNE 2021

WEEKLY EVENTS

Please call prior to attending events listed to ensure they are still on!

EVERY MONDAY

- 09.00 U3A Table Tennis Group meet at Harmans Cross VH.
- 09.30 Under 2.5 years old group. Till 11am. at Parish Hall, Wm.
- 09.45 Toddler Club URC, Sw. Till 11.15
- 10.00 Table Tennis Club Sw FC All ages/abilities £2.50 Till noon. 480093
- 10.30 Flowers with Liz at the Purbeck Workshop in Wool. The Workshop provides craft activities free of charge to those touched by cancer - friends and family are welcome too. Unit 6, Woolbridge Business Centre, East Burton Rd, Wool. BH20 6HG. www.purbeckworkshop.org 07757 776907. Email: richris95@gmail.com
- 13.00 Play and Learn at Wareham's Children's Centre, Streche Rd, Wm. Till 2.45pm
- 13.00 Under 1s and Tums at Chapel Lane, Swanage. Till 3pm
- 14.00 Pins and Needles at Harmans Cross VH.
- 14.00 Swanage Digital Champions. Support people in the community to use the internet and gain basic online skills. Booking essential on 01929 423485.
- 14.00 Wareham Short Mat Bowls. Meet at Furzebrook Village Hall. New members welcome to come along and meet us!
- 14.00 Swanage Disabled Club meet until 4pm. Meeting place alternates between Catholic Hall & Queensmead Hall, Sw. Transport available. Call Mrs Daphne Saville on 01929 425241 ffi.
- 16.00 Colour Me Happy. Adult colouring session at Swanage Library. Drop in.
- 16.45 Soccer Skills Sw FC First Sch chldn £1 Till 5.45. 425175
- 18.00 Lesbian and Gay Friendship Group meets every Monday evening for social events and shared interests, such as meals, walking and outings. Ffi: contact Karen via email: outinpurbeck@gmail.com
- 18.00 Swanage Tennis Club at Beach Gardens, Sw. Free Cardio Tennis taster. Till 7pm
- 18.00 Swanage Tennis Club at Beach Gardens, Sw. Free Matchplay taster session for prospective new members. First 3 sessions are free. Until 8.30pm.
- 19.00 Wareham Choral Society meet URC Meeting House, Church St, Wm. Till 9. New singers always welcome.
- 19.00 Swanage Youth Club. School year 10 and upwards. Till 9.30pm
- 19.00 Whist. Come & join us at the Reading Room, Church Hill, Swanage. Ffi, call 07984 968733
- 19.00 Purbeck Chess Club. Mortons House Hotel, Corfe Castle. Ffi, call Steve Peirson on 01929 552504.
- 19.30 Purbeck Quire rehearse at Wm Methodist Church. New/visiting singers (no audition necessary). String & wind players also welcome. Ffi: 423505 or 480737.
- 19.30 Wareham Art Club Workshop at Wareham Parish Hall. Ffi: 553718.
- 19.30 Wm Folk Dance Club Stoboro' VH. All welcome. 552763/551029
- 19.30 Swanage Air Cadets meet at Air Training Corps HQ, Court Road, Sw. Cadets age 12+. Ffi: email: oc.2185@aircadets.mod.
- 20.00 DARTS at the RBL Club, Sw.
- 20.00 Herston Hall Management C'ttee Bingo

EVERY TUESDAY

- 09.00 Swanage Tennis Club at Beach Gardens, Sw. Free Cardio Tennis taster. Till 10am
- 09.30 Isle of Purbeck Arts Club. Painting and sketching. At the Catholic Church Hall, Rempstone Rd, Sw. Till 1pm. Outdoors in summer. Ffi: Gina on 421689.
- 09.30 Well Baby Clinic at Chapel Lane, Swanage. Till 11.30am.
- 09.30 Kiddies Corner Mother & Toddler Group (term time only) No fee - donations welcome. Purbeck Gateway Church. 551415
- 09.30 Wareham Art Club Workshop at Wareham Parish Hall. Ffi: 553718.
- 09.30 First Steps Parent & Toddlers' Group. Swanage Methodist Church till 11.30am during term time. Ffi: Sylvia Garrett 425420, office hours.
- 10.00 Men & Women's Mixed Walking Football Club at Swanage Football Club. Come and try! All levels welcome, even if you've never played before. Come and join in or just come along to watch a very friendly group of people playing football. Until 11.30am. Call Nick on: 07745 907509
- 10.00 Swanage Tennis Club at Beach Gardens, Sw. Free Matchplay taster session for prospective new members. First 3 sessions are free. Until 11.30am.
- 10.00 Wareham Croquet Club meet at the Recreation Ground until 5pm. New members and visitors welcome. Call Tony on 01929 550190 or Lesley on 01929 553927 or email warehamgolfcroquetclub@hotmail.com
- 10.00 Sandford Toddlers at Sandford Community Hall, till 11.30am.
- 10.00 Short Tennis at Sw FC All ages & abilities £1.50 Till noon. 425175
- 10.00 A Place Of Welcome at 21 Commercial Road, Sw. Friendly drop-in for everyone, providing a free cup of tea or coffee, a listening ear, conversation and basic information. Everyone welcome, whatever the circumstances.
- 10.30 Adult Line Dance Class. FREE taster session at D'Urberville Centre, Wool. Till 11.30am with fully qualified instructor. All Covid-19 safety measures in place. Call Donna: 01202 243803 or email: donnadiebelius@gogglemail.com
- 10.30 Employment Hub at Swanage Library. Until 12.30pm. Book via Skilla dn Learning on 01202 262300.
- 10.30 Swanage Walking for Health Group starter walks (15-30mins). Start from the Mowlem Shelter on Swanage Seafront. Get back into the swing of things gently! Ffi: 481000

- 10.30 Wareham Walkers. Convivial health walks for mainly older people, of up to two hours in and around Wareham, ending with coffee at a local tea room or pub. Ffi: www.wareham-walkers.org.uk or call 552933.
 - 11.30 New Adult Latin American & Ballroom Dance Class for beginners. FREE taster session at D'Urberville Centre, Wool. Till 12.30pm with fully qualified instructor. All Covid-19 safety measures in place. Call Donna: 01202 243803 or email: donnadiebelius@gogglemail.com
 - 12.00 Nature Tots (0-4yrs) at Bovington Memorial Hall Garden. Until 2pm.
 - 14.00 Wareham Short Mat Bowls. Meet at Furzebrook Village Hall. New members welcome to come along and meet us!
 - 14.00 Swanage Walking for Health Group. Walks of 60-90mins, various locations. Walks are very social, for a range of abilities. Walks start from car parks at Studland, Corfe, Arne, Durlston, Langton, Acton, Worth and Kingston. Ffi: 481000.
 - 14.00 Swanage Town Walk. Local historian takes walks lasting 90 minutes. Meet outside the Museum in the 'Square'. No charge but voluntary contributions welcome.
 - 14.00 Harman's Cross Village Hall Art Group Till 5
 - 18.00 Sw Youth Centre Girls' Night (Yr 8+) Till 10
 - 18.15 Sw Cricket Club Practice till 8.30pm
 - 18.30 Sw Bridge Club Mowlem Community Room. 421840
 - 19.00 Wareham Air Cadets meet at Air Training Corps HQ, St Martin's Lane, Wm. Cadets age 12+. Ffi: email: oc.2185@aircadets.mod.
 - 19.00 New Adult Line Dance Class. FREE taster session at Corfe Castle VH. Till 8pm with fully qualified instructor. All Covid-19 safety measures in place. Call Donna: 01202 243803 or email: donnadiebelius@gogglemail.com
 - 19.30 Swanage Group of Alcoholics Anonymous meets at Swanage Day Centre, High Street, Swanage. If you want help to stop drinking, you are welcome. Or call 01202 296000 for more details.
 - 19.30 Women's Walking Football Club at Swanage Football Club. Come and try! All levels welcome, even if you've never played before. Come and join in or just come along to watch a very friendly group of people playing football. Until 9pm. Call Nick on: 07745 907509
 - 19.30 Sw & Langton Folk Dance Club Langton VH. Ffi: 421913
 - 19.00 Belvedere Singers rehearsal at St Mark's CE VA Primary School, High St, Sw. Parking on-site. Till 9pm. All singers welcome! 425074.
 - 19.00 Give Rugby A Try! FREE! at Swanage & Wareham Rugby Club, Bestwall Rd, Wm. We're looking for new players, so come and have a go! Until 9pm. Over 18s only. Call John C. on: 07970 500357 Ffi.
 - 20.00 Carey Hall, Wm Bingo
- ### EVERY WEDNESDAY
- 09.00 St Mark's Toddlers Group, St Mark's Church, Swanage. Herston, Sw Till 11am
 - 09.45 Corfe Wool Workshop Corfe VH, East St. Members £1.50: non-members £2.50. Till 12.00. 427067
 - 10.00 Short tennis for adults at Swanage Football Club. All welcome. Equipment supplied. Till noon.
 - 10.00 Breast Feeding Group at Wareham's Children Centre, Streche Rd, Wm. Offering peer support and breastfeeding counsellor advice. Till 12 noon. Ffi: 552864
 - 10.30 Adult Dance Classes. Modern Line dance. Until 11.30am. At St Edward's Church hall, Swanage. Ffi: 01202 243803 or see: www.purbeckdancestudio.co.uk
 - 10.30 Play and Learn at Kids of Wool (BH20 6DY) until 12 noon.
 - 10.30 Books and More - at Swanage Library. Reading & discussion group.
 - 13.00 Studland Toddler Group at Studland Village Hall until 2.30pm.
 - 14.00 Herston Senior Citizens meet Herston Hall, Jubilee Rd, Sw. All welcome
 - 14.00 Health Oigong: Fitness and relaxation. Till 3pm. With Penny at the Mowlem Community Room, Sw. Ffi 07969925502
 - 14.30 Local Historian takes you on a town walk around Swanage, lasting 1 1/2 hours. No need to book, just turn up in the Swanage Museum in the Square, voluntary contributions welcome.
 - 15.00 Extend Exercise Class, now at Morton Village Hall. To improve strength, balance and flexibility. All welcome. Donations welcome. Ffi: 471490.
 - 16.15 Swanage Football Club U-7s Training til 5.15pm. £1. Ffi: 426346
 - 17.15 Swanage Football Club U-9s Training til 6.15pm. £1. Ffi: 426346
 - 18.00 Swanage Tennis Club at Beach Gardens, Sw. Free Cardio Tennis taster. Till 7pm
 - 18.00 Swanage Youth Club. School years 7&8. Till 8.30pm
 - 18.00 Table Tennis at Harmans Cross Village Hall. All ages & abilities welcome. Coaching given. Till 8pm or later. Ffi: 424591
 - 18.30 Sw & Wm Hockey Club Junior (6-14yrs) Training, Wm Sports Centre. Until 7.30pm. Email: swanagewarehamhockey@outlook.com
 - 19.00 Wm Bridge Club at the Library, South St. 552046
 - 19.00 Swanage Depression Support group. We meet on the 1st and 3rd Wednesday each month at the Lower Hall, Salvation Army, Kings Rd East, Sw. BH19 1ES, until 9pm. Ffi: Nick on: 07766352062 or email: nickviney@hotmail.com or call Mary on: 01929426896.
 - 19.00 Wareham Depression Support group. We meet on the 2nd and 4th Wednesday each month at Not Just Sundaes. South Street, Wareham. BH20, until 9pm. Ffi: John: 01929556315 or 07871 727278 or email: johnoneil905@yahoo.co.uk

- 19.00 **Swanage Town Band** meet for our weekly practice in the Council Chamber, Swanage Town Hall. New musicians warmly welcomed. Please call David Cook (musical Director) for further information on: 01929 422909.
- 19.00 **Give Rugby A Try! FREE!** at Swanage & Wareham Rugby Club, Bestwall Rd, Wm. We're looking for new players, so come and have a go! Until 9pm. Under 16s-18s only. Call John P. on: 07725 567541 Ffi.
- 19.00 **Purbeck Runners** meet at Beach Gardens Pavillion, Sw.
- 19.30 **Swanage Musical Theatre** meet Swanage Bay View Complex Rehearsal Room. All welcome. Ffi: 426161
- 19.30 **Sw & Wm Hockey Club (13+ years)** Training, Wm Sports Centre. Till 9pm. Email: swanagewarehamhockey@outlook.com
- 20.00 **Sw Youth Centre Club Night (Yr 9+)** Till 10
- 20.15 **Dorset Buttons Morris Practice.** URC Hall, Wm. 423234/421130
- 20.30 **Wm Swimming Club Adults.** All standards + stroke improvement. Till 10
- 22.00 **Sw Youth Centre Club Night (16+)** Till 11.59
EVERY THURSDAY
- 08.30 **Swanage Tennis Club** at Beach Gardens, Sw. Free Cardio Tennis taster. Till 9.30am.
- 09.00 **Carey Crafters** meet every Thursday at Carey Hall, Mistover Road, until 12.30pm (come anytime between). No age or gender restriction. All crafts welcome we have a wide variety!. Come along and share your craft or learn a new one! Contact Donna on 07870 993311 or Helen on 07368 352737 ffi.
- 09.00 **Swanage Painting Club.** Catholic Church Hall, Rempstone Rd, Sw. Friendly group. New members including beginners welcome. Till 1pm. Ffi: Jane on 01929 427078
- 09.30 **Play and Learn** at Chapel Lane, Swanage, till 11am.
- 09.30 **Well Baby Clinic** at Streche Road, Wareham, until 12 noon.
- 09.30 **Swanage Tennis Club** at Beach Gardens, Sw. Free Matchplay taster session for prospective new members. First 3 sessions are free. Until 11am.
- 09.30 **Sensory Play** for under ones, at Bovington Centre until 10.30am
- 09.30 **Adult Dance Classes.** Latin American & Ballroom dance. Until 10.30am. At the Wareham Scout & Guide Hut, N. Bestwall Rd, Wareham. BH20 4HX. Ffi: 01202 243803 or see: www.purbeckdancesstudio.co.uk
- 10.00 **Wyvern Savings & Loan Credit Union** opens until 12 noon at Not Just Sundaes, South Street, Wareham, opposite the Library. A secure place to save and loans available at fair rates. Call in for a cuppa and a chat, or call 01305 268444.
- 10.00 **Wm Parent & Toddler Group** During term Parish Hall, Quay Till 11.45. 556806
- 10.00 **Wool Country Market** D'Urbeville Hall. Cakes, preserves, plants, crafts, vegetables. Coffee & biscuits available.
- 10.00 **Tea, Coffee, Biscuits** at Queensmead Hall, Sw. Till 11am. Adm 50p
- 10.00 **Volunteer Centre Drop-In** at Wareham Library till 12pm. Find out about volunteering to support community groups & charities.
- 10.00 **Wareham Croquet Club** meet at the Recreation Ground until 5pm. New members and visitors welcome. Call Tony on 01929 550190 or Lesley on 01929 553927 or email warehamcroquetclub@hotmail.com
- 10.15 **Chess** at the Cafe Trait, Lower High Street, Swanage (from 8th February 2018). Call in for a friendly game of chess and a chat. All welcome.
- 10.30 **Mid-Week Market Morning Service** URC, Church St, Wm. Prayer requests to Revd. Simon Franklin 556976
- 10.30 **Woodworking** with Bernard and Terry at the Purbeck Workshop in Wool. The Workshop provides craft activities free of charge to those touched by cancer - friends and family are welcome too. Unit 6, Woolbridge Business Centre, East Burton Rd, Wool. BH20 6HG. www.purbeckworkshop.org 07757 776907. Email: richris95@gmail.com
- 11.00 **Sensory Play** for 1-4yrs old at Bovington Centre, until 12 noon.
- 11.30 **New Adult Line Dance Class.** FREE taster session at Corfe Castle VH. Till 12.30pm with fully qualified instructor. All Covid-19 safety measures in place. Call Donna: 01202 243803 or email: donnadiebelius@gogglemail.com
- 13.30 **Under 1 year olds** at Wareham's Children's Centre, Streche Rd, Wm. Anti-natal mums welcome. Till 3pm. Ffi: 552864.
- 13.00 **Wareham Area Men's Shed** meets at Purbeck Connect, Sandford Lane, Wm. Ffi: call Chris on 554758, Harold on 792591 or Mike on 288045
- 13.30 **Toddler Group.** All Saints' Church, Sw. 423937. Till 3pm (Term times)
- 13.00 **New Adult Latin American & Ballroom Dance Class** for beginners. FREE taster session at Corfe Castle VH. Till 2pm with fully qualified instructor. All Covid-19 safety measures in place. Call Donna: 01202 243803 or email: donnadiebelius@gogglemail.com
- 14.00 **Swanage Town Walk.** Local historian takes walks lasting 90 minutes. Meet outside the Museum in the 'Square'. No charge but voluntary contributions welcome.
- 14.00 **Wareham Happy Cafe.** Friendly conversation, talks, activities and some fun to put a spring in your step! Everyone welcome. Held at the Not Just Sundaes Cafe in South Street, Wareham. BH20 4LU. From 5th March 2020 onwards. FREE. Until 3.30pm.
- 14.00 **Studland Chair-based Exercise** in the Village Hall, Studland. Ffi: Julie on 558139 or email: jbrad@uwclub.net
- 14.15 **Sw Over-60s** Meet in the Rectory Classroom, Swanage, Sw. All Welcome.
- 17.45 **Swanage Youth Club.** Learning Difficulties and disability (age 11-25) night. Till 7.30pm
- 18.00 **Isle of Purbeck Arts Club.** Weekly evening Art Group. Aimed at beginners, at Purbeck New Wave Gallery, 25 Commercial Rd, Sw. BH19 1DF. till 9pm.
- 18.15 **Sw Cricket Club** Practice till 9pm
- 18.30 **Swanage Sea Rowing Club** Circuit Training at Swanage Middle School. Ffi: 07776 201455
- 19.00 **Health Qigong: Fitness and relaxation.** Till 8pm. With Penny at Furzebrook VH, Wm. Ffi 07969925502
- 19.00 **Over 40s Men's Walking Football Club** at Swanage Football Club. Come and try! All levels welcome, even if you've never played before. Come and join in or just come along to watch a very friendly group of people playing football. Until 8.30pm. Call Nick on: 07745 907509
- 19.00 **Purbeck Gateway Club** meets at Wareham Youth Centre until 9pm. Purbeck

Gateway is a club for adults with learning difficulties. We meet during term time and have fun! All welcome. Ffi: Lew on 552173. Email: Lewisbell1@aol.com

- 19.15 **Wm Town Band Brass & Woodwind** players welcome. 551478/01202 242147
- 19.30 **Short Mat Bowls** in the Durbeville Hall, Wool. All standards welcome, till 9.30pm. Ffi: 552682
- 19.30 **Purbeck Arts Choir** meet for rehearsals, with conductor David Fawcett, at St Mary's School, Northbrook Road, Swanage. Sept-May. All welcome. For more information please phone Liz Roberts 01929 481419
- 19.30 **Swanage Youth Club** Youth Action (year 7 - sixth form). Till 9.30pm
- 20.00 **Herston Hall OAP Committee** Bingo Sw
EVERY FRIDAY
- 08.45 **Coffee @ 112 - Drop In For Coffee!** Catch up with friends at 112 High Street (United Reformed Church) in Sw. Cake and bacon butties. Fair trade stall. Donations for 'Besom in Purbeck' and church funds.
- 09.00 **Swanage Tennis Club** at Beach Gardens, Sw. Free Cardio Tennis taster. Till 10am
- 09.30 **Health Qigong: Fitness and relaxation.** Till 10.30am. With Penny at Furzebrook VH, Wm. Ffi 07969925502
- 09.30 **Wareham Area Men's Shed** meets at Purbeck Connect, Sandford Lane, Wm. Ffi: call Chris on 554758, Harold on 792591 or Mike on 288045
- 09.30 **Little Fishes Baby and Toddler Group.** Catholic Church Hall, Rempstone Road, Swanage. Term time only. Until 11.30am. Ffi: Alex on 07904 412067.
- 10.00 **Table Tennis Club** Sw FC All ages/abilities £2.50 Till noon. 480093
- 10.00 **A Place Of Welcome** at 21 Commercial Road, Sw. Friendly drop-in for everyone, providing a free cup of tea or coffee, a listening ear, conversation and basic information. Everyone welcome, whatever the circumstances.
- 10.30 **Do you want to volunteer in Swanage?** Meet the team at the Volunteer Bureau in Swanage Library! Until 12.30pm.
- 11.00 **Swanage Library Rhyme Time,** ages 0-4, until 11.30am.
- 11.00 **Toddler Time** For Under 5s And Carers. Wareham Library. Stories, songs and crafts. Every Friday, including school holidays. Ffi: 01929 556146
- 14.00 **Wareham Short Mat Bowls.** Meet at Furzebrook Village Hall. New members welcome to come along and meet us!
- 14.30 **Short Mat Bowls** at Durbeville Hall, Wool. Till 4.30pm. All standards welcome. Ffi: 552682.
- 18.00 **Swanage Tennis Club** at Beach Gardens, Sw. Free Matchplay taster session for prospective new members. First 3 sessions are free. Until 8.30pm.
- 18.00 **Purbeck War-Game & Model Club.** Royal British Legion, Sw. 426096.
- 18.00 **Sw Youth Centre Club** 12-13 (Yr 7-9) Till 8
- 18.00 **Purbeck Youth Choir** at the United Reformed Church Hall, Sw. 8-18 years old. Till 7pm. Ffi: Jay Buckle on: 07947 866945
- 18.30 **Sw Bridge Club** Mowlem Community Room. 421840
- 19.00 **Sw Youth Centre Seniors Club Night (Yr 9+)** Till 9.30pm.
- 19.30 **Short tennis** for adults at Swanage Football Club. All welcome. Equipment supplied. Till 9.30pm. £3.
- 19.45 **Alcoholics Anonymous Wareham.** Talk and tea from 19.15, meeting from 19.45 until 21.00. At Wareham Day Centre, 21 Bonnets Lane, Wareham. BH20 4HB. If you think you may have a problem with alcohol, you are welcome. You can learn about living sober from people who do. The first Friday of each month is also open to professionals and friends/family of problem drinkers. Ffi: 01202 296000.
- 20.00 **Sw Youth Centre Live Bands** (as advertised) Till 10pm.
- 22.00 **Sw Youth Centre Late Session (Yr 9+)** till 11.59pm (members free)
EVERY SATURDAY
- 08.00 **Purbeck Runners** meet at the Mowlem, Sw. 4/5 mile run.
- 09.00 **Sw CC U11 - U15 Practice** till 10.30
- 09.30 **Sw CC U9 & U10 Practice & Kwik Cricket** till 10.30
- 10.00 **Tea, coffee and home-made cakes** in the Parish Hall on Wareham Quay during the Community Market. Till 2pm. Bric-a-Brac stall weekly. Christian bookstall most weeks. All welcome for a warm-up and a friendly chat.
- 11.00 **Lego and Megablok Mayhem** at Swanage Library, until 12 noon.
- 20.00 **Herston OAP Committee** Bingo at Herston Hall, Sw
EVERY SUNDAY
- 09.00 **Purbeck Runners** meet at the Mowlem, Sw. 8+ mile run.
- 10.00 **Arts and Crafts Market** at the Mowlem in Swanage. A wide range of local art for sale, including pottery, glass, cards, fabric and much more! To book your table, or for more information, call Tony on 01929 421321.
- 10.00 **Give Rugby A Try! FREE!** at Swanage & Wareham Rugby Club, Bestwall Rd, Wm. We're looking for new players, so come and have a go! Until noon. Under 6s-16s only. Call Claire on: 07799 842225 Ffi.
- 10.30 **Stoborough Emmanuel Baptist Church** meet at Stoborough First School, Stoborough. All very welcome.
- 13.30 **Swanage Tennis Club** at Beach Gardens, Sw. Free Cardio Tennis taster. Till 2.30pm
- 14.30 **Swanage Tennis Club** at Beach Gardens, Sw. Free Matchplay taster session for prospective new members. First 3 sessions are free. Until 4.30pm.
- 19.00 **Quiz Night with cash prizes** at the Red Lion, High Street, Swanage. All welcome - come along and see if you can win the prize pot!

TALK TO US
any time you like, in your own way,
about whatever's getting to you
CALL: 116 123 (FREE)

LOCAL TRADE ADVERTISING

 **Bug Busters Pest Control**
Professional Reliable Service
Wasps, Mice, Rats, Ants, Flies, Fleas,
All dealt with promptly & efficiently.
All Dorset areas covered Tel: 01929 460011
www.bugbustersdorset.com Mob: 07973 407027

From **REPAIR TO REPLACEMENT**
Windows, Doors, Conservatories, Fascias &
Glazing. Garden Rooms now available.

Purbeck
Conservatories &
Windows Ltd
Fensa Registered Company
For a FREE quotation and prompt
service, please call us on:
01929 554321 or 07734 534286
Email: purbeckcw@hotmail.co.uk

KDI PLUMBING & HEATING
Immersion heaters, cylinders, cold water tanks,
ballvalves, taps, showers, bathrooms, radiators,
heating problems and more!
FREE ESTIMATES & ADVICE - NO CALL OUT CHARGES
Mobile: 0747-512-8249 or 01929 448548
ALL AREAS SERVED

 **Roy Osmond Ltd**
Traditional Forge Works
Light Fabrication, Security Grills, Hand & Balcony
Rails, Fire Escapes & Bespoke Work
Stainless Steel and Glass Balconys
Telephone on: 01929 400520
or mobile: 0779 6044859

Great Escape Gardens
General Maintenance Specialist
Preparation & Planting
TREE PRUNING & FELLING, PATIOS & DECKING
FENCES & GATES
01929 781680, 07767 028248
www.greatescapedgardens.co.uk

 **SWANAGE**
& DORSET
SCAFFOLDING & ROOFING
All aspects of Residential & Commercial Scaffolding
Flat Roofing - Re-roofs, Slate or Tile, All repair works
Emergency Call Outs - Free Quotations & Estimates
Temporary Roof Coverings - Fully Insured
OUR PRICE WON'T BE BEATEN
01929 424553 01258 858214
07813 346993

wf SNOOK
Established in Purbeck since 1952
• SPECTUS. PVC-U Aluminium &
Timber Framed Windows
• Doors • Patio Doors
• Bi-Folding Doors • Window Repairs
• Misted Unit Repairs • Garage Doors
• 'Kestrel' PVC-U Facia, Soffit, Mouldings etc
• Conservatories • Roof Atriums
~ Fully Qualified ~
All work guaranteed
TEL: 01929 481 581
enquiries@wfsnookandsonltd.co.uk
www.wfsnookandsonltd.co.uk

OVEN & WASHING MACHINE
REPAIRS
and other appliances
Washing Machines, Dishwashers,
Tumble Dryers, Electric Cookers,
Fridges, Freezers.
Colin Shailer.
01929 554809 07711 165062
colinshailer@gmail.com

CMS Electrical Repairs

MALLWOOD ROOFING LTD
Family business - all aspects of roofing, including:
Built-up Felt, Cold Applied Liquid System
Slating & Tiling
All new roof coverings fully guaranteed
TEL: 01202 020063
or 07950 972289 Checkatrade.com

Garage Doors
New Installations
Repairs
Servicing
Automation

Dorset Doors Ltd - Wareham
01929 660789

DIRTY OVEN!
Clean Ovens Domestic Ltd
DOMESTIC OVEN CLEANING
NON caustic, fresh solution every time.
Hobs, Extractors and Microwaves
Covering the Whole of Dorset
PHONE 0800 707 6629

SOOTY THE SWEEP
Local Full Time Chimney Sweep for 30 years
Nacs, Hetas, City & Guilds Qualified
Be safe! Reliable Advice Given
Covering All of Dorset
All chimneys and flues swept
Woodburner Servicing
Cows, bird nets, pots, etc.
Stoves, liners, grates, fire tools
Kiln dried LOGS, CCTV Surveys
Insured and certificates given.

01929 554700/427427
www.sootythesweep.com

Buds of Mave
Wedding Flowers & Funeral Tributes
Bouquets Made To Order
Contact Caroline for further details
07966462974

IDEAL SKIP HIRE
Skips from 2 - 40yds
SAND GRAVEL HARDCORE
SHINGLE & TOP SOIL
Available loose or in 25kg & 1 ton bags
Delivery or Collection
Trade & DIY customers welcome
A Fast, Friendly & Efficient Service
TEL: 01929 422980

3D Detect - Deter - Dependable
Fire Alarms
Intruder Alarms
CCTV
Installation & Maintenance
Security Systems Ltd
Call:
07946 775549
Email: info@3dsecuritysystems.co.uk

Quality Sweep
• Power or manual sweep
& HEPA filtered vacuum
• CCTV inspection
• Bird nest removal
• Certificate issued with
every sweep
Tel: 01305 852134 Mobile: 07941 350127
SWEEPS FROM £40

LOCAL TRADE ADVERTISING

SANDIE'S BARBERSHOP

191 HIGH STREET, SWANAGE

Open Mon - Thurs, 9am - 5pm,
Fri 9am - 2pm, Sat 8.30am - 3pm

We are closed on Sunday.
Late night Thursday till 7pm

01929 426364

LOCKSMITH

Police recommended insurance approved locks available
Additional Security for Garage & Gates, Key safes, Codelocks
UPVC multipoint & Wooden door lock specialist
Local Master locksmith & Safe Engineer Service

07709 545701



www.parrotlocks.co.uk
paul@parrotlocks.co.uk



Proud members of
Checkatrade.com
Where reputation matters

A.D.S PROPERTY SERVICES

General Builder

EXTENSIONS,
KITCHENS & BATHROOMS,
BRICKWORK,
PATIOS, FENCING,
PLASTERING,
DECORATING,
ROOF REPAIRS
& CHIMNEYS

Tel: Andy Smith 01929 553535 **City&Guilds**
Mobile: 07743 440906

DOORS, WINDOWS & LOCKS

GLASS REPAIRS: MISTED, DAMAGED DOUBLE
GLAZED UNITS REPLACED.
PVC-U & TIMBER WINDOWS & DOORS
INSTALLED. INTERIOR DOORS FITTED.
PVC-U DOOR PANELS REPLACED.
CAT FLAPS FITTED.
LOCKS OPENED, REPLACED, UPGRADED.
SNAPPED KEYS EXTRACTED.
HANDLES - HINGES - LETTER BOXES - SEALS
GASKETS REPLACED
SECONDARY GLAZING SUPPLIED
AND INSTALLED

TEL: 01929 481496

MOBILE: 07484 186617

EMAIL: dwlocks@outlook.com

FENSA, MTC-CRB CHECKED. GGFI INSURANCE-BACKED GUARANTEE



ROOFING SPECIALIST SPARROW'S

Over 30 years

Membership Federation of Master Builders

NO JOB TOO SMALL

01929 421156

07974 077885

The Premier Trade Organisation
High Performance Flat Roofing Specialists
Re-Roofing - Slating & Tiling
Roof Repairs - UPVC Facias & Gutters
Chimneys Removed or Repointed
sparrowroof@gmail.com

NJA Specialist Tree Care

All aspects of Tree Surgery
& Hedgework undertaken

Fully insured and NPTC Qualified
Free Quotations and advice

07703 210647 or 01929 481600

Purbeck Chimney Sweep

TEL: 01929 423244
MOB: 07974 809779



ICS Always happy to help and advise

TERMINATOR PEST CONTROL

WASPS • BEES • FLEAS • RATS
MICE • ANTS • SQUIRRELS • BIRDS

All Purbeck areas covered

01929 554898

MOBILE: 07831 351877



J.A. CONSTRUCTION

(DORSET) LTD.

Specialist in Purbeck Stone Walling
General Building, Extensions,
Renovations, Roofing, New Builds
and all types of Ground Work.
Also available for Plumbing,
Electrics & Carpentry.



Tel: 01929 554249

Fax: 01929 552294

Mobile: 07973 388190

www.jaconstructiondorset.co.uk

Email: sales@jaconstruction.co.uk

DIGITAL AERIAL UPGRADES

*SKY & FREESAT INSTALLATIONS
*LCD/PLASMA SALES & REPAIRS
*WALL MOUNTING & INSTALLATION SERVICE
*REPAIRS TO DOMESTIC GOODS

REPAIRLINE

7 WEST STREET WAREHAM

Members of **Checkatrade.com** **01929 554692**
Where reputation matters

BINDON ABBEY SCAFFOLDING

WOOL - WAREHAM

Reliable service and competitive pricing

T: 07501 465192

Email: bindonabbeysc scaffolding@outlook.com



Countryside Tree Surgeons

Professional specialists - NPTC certified tree surgeons

All aspects of Tree Surgery, Hedge Trimming & Fencing
FREE QUOTATION

Established 18 years. Fully Insured. Family-run business
Please call Wayne Pitman

0800 389 3992 (office)

01929 551816 (home)

07979 447777 (mobile)

BRIAN MOORE INDEPENDENT TELECOM ENGINEER (Ex-BT)

Repair of phone lines & broadband

HALF BT PRICES!!

07858 458997 - 01929 554886



It's really rather simple you know.

If you are looking at this space,
then so are your potential customers.

Book your trade ad now, there's a
good chap.

Please call **01929 424239**. Quite.

Whizzbits

Computer Sales & Support

Virus/Spyware removal • Upgrades & repair
Networking • Windows problems fixed
Wireless set-up • Internet & e-mail

Tel: 01929 421989 or 07900 992110

Call Pete for a prompt & reliable service



Colin Mowbray

Gas Installer

Plumbing, Heating & Tiling



01929 550160 - 07790 056396

Central heating, Plumbing, Boiler Servicing,
Bathrooms & Showers, Unvented Systems

PROPOINT

Call for a realistic quote **01929 421663**
07768 660833

Re-pointing roofing

Wall tie replacement

Cavity cleaning

Tray & lintel replacements

facias & Guttering



LOCAL TRADE ADVERTISING

REDHILL
Windows

Installers of

Swanage based
Window &
Door Company
FENSA

Windows - Doors - Bi-fold Doors - Conservatories
Fascias - Soffits - Guttering - Cladding
Window & Door Repairs
Misted Sealed Units replaced
UPVC - Aluminium - Timber
Ggfi Insurance back guarantee • 10 years guarantee

For a free, no obligation quote contact us on:
Office 01929 424199 Mobile 07538 950 230
Email - redhillwindowsltd@hotmail.co.uk
Web - www.redhillwindowsltd.co.uk
20 years experience working in Purbeck

Michael B. Alberry

DECORATOR

Property Decoration & Renovation
07796 640538
01929 424882

Buds of Mave

Wedding Flowers & Funeral Tributes
Bouquets Made To Order
Contact Caroline for further details
07966462974

room H₂O **Bathrooms**
Ensuites - Wetrooms - Cloakrooms
Mobility - Bath out shower in

Design & Installation Service

- Large modern showroom with inspirational displays
- No job too small
- Free site survey and quotations

Unit 9, Justin Business Park,
Sandford Lane, Wareham BH20 4DY
01929 551963 www.roomh2o.co.uk


Ian Michie
TREE CARE

Professional & skilled arborists
Tel: 01929 554281
Mobile : 07837024558
www.ianmichietreecare.com

Purbeck Aerials.Com
Same day service Free Sat SKY
TV Aerials WI-FI Wall Mounting
30 years trading experience
We offer same day service and an OAP discount

Online Shop  **01929 553705**
07976 222887

 **LYTCHETT MINSTER JOINERY LTD**

Manufacturers of Purpose-made
HARD & SOFTWOOD JOINERY

01202 622441 E: info@lytchettminsterjoinery.co.uk
www.lytchettminsterjoinery.co.uk

FENCING
All Types Supplied & Erected
FREE ESTIMATES
JL Corbin Fencing Contractors
01929 552 061 07774 207 924

SAM FOOKS
General building and Garden maintenance
Including: Pointing, Patios,
Garden Walls and Fencing
Tel: 07772 794056 / 01929 421250
Email: samfooks1988@icloud.com

Join our trusted Trade advertising section and let locals know what services YOU offer!

Six month block (single trade advert) £158.76 (inc. VAT)

USE OUR LOCAL TRADES PEOPLE OR LOSE THEM!

Purbeck Domestic & Trade Waste



Fully Insured - Registered Waste Carrier

Domestic Clearances - Commercial Clearances

Garden Clearance

Waste Electrical & Electronic Disposal

White Goods - Old Furniture & beds - Light Demolition

Evening & weekend collections available by appointment

Telephone: 01929 550 615

Mobile: 07816 456 814

www.purbeckdomestictradewaste.co.uk



SWANAGE PIZZA & BURGERS

Enjoy freshly made hand-thrown pizza using the best ingredients at the town's most reasonable prices!

DELIVERY - TAKEAWAY

EAT IN - ORDER YOURS

ON SWANAGE 427777



ORDER ONLINE!

SCAN THE QR CODE OR VISIT

SWANAGEPIZZA.CO.UK

Man & Van

available to hire

Rubbish Clearance
Half the price of a skip -
and we do all the work!

07767 479438

Fully licensed & insured

AMAZING PRINT

AT MINIMAL ENVIRONMENTAL COST

GIVE YOUR BUSINESS THE BOOST IT DESERVES

Superb quality, cost effective
eye-catching design and print

**Get the word out and watch
your sales soar!**

- Leaflets • Company brochures
- Publicity material
- Full design service

blackmore

superb print - naturally

01747 853034

sales@blackmore.co.uk

Longmead, Shaftesbury, Dorset, SP7 8PX

www.blackmore.co.uk

VIP stockists of YOUR Purbeck Gazette!

Lytchett & Upton Council, Lytchett Minster
The Courtyard Craft Centre, Lytchett Minster

The Baker's Arm Pub, Dorchester Road

The Clay Pipe Inn, Organford Rd

Crossways Post Office, Crossways

The Spar Shop, Puddletown

The Post Office, Winfrith

Mace Stores, Bere Regis

Bartlett's Store, Bere Regis

Holme Nurseries, East Holme

Co-op Food & Petrol Station, Sandford

Horseys Newsagents, Wareham

Premier Stores, Carey, Wareham

Purbeck Mobility, Wareham

The Hidden Deli, Wool

Gillett's Spar Shop, Wool

The Lookout Stores, Stoborough

Stoborough Garage, Stoborough

Foleys Garage, Harmans Cross

St Michael's Garage, Harmans Cross

Swanage Tourist Information Centre

Swanage News Newsagents, Swanage

MColls Newsagents, Swanage

Jenkins Newsagents, Swanage

Arkwrights Stores, Swanage

Ballard Stores, North Swanage

Costcutters, Herston, Swanage

Richardson's Budgens, Swanage

Triangle Garage, Swanage

Durlston Castle/Seventhwave Restaurant, Durlston, Swanage

The Scott Arms pub, Kingston

Corfe Castle Village Stores, Corfe Castle

Langton Village Stores & Post Office, Langton

Studland Stores, Studland



THANK YOU TO OUR AMAZING STOCKISTS - SUPPORT LOCAL!

EKLEKTIKA
www.EKLEKTIKA.INFO
Antique Retro Vintage

**SWANAGE'S
ANTIQUES
CENTRE**

NEED A STUFFED BADGER? A CUTLASS?

A PEARL NECKLACE? A HATSTAND?

**FOR ANTIQUES, RETRO, VINTAGE AND
COLLECTABLE ITEMS THAT ARE JUST A
LITTLE BIT UNUSUAL, VISIT US AT**

2 INSTITUTE ROAD, SWANAGE

**We buy & sell antiques,
jewellery, weaponry and
unusual items!**

01929-422477