



20,000 copies:
Swanage to Dorchester,
Lulworth to Bere Regis

The Purbeck Gazette



MISSION ACCOMPLISHED

Pensioners coin in the cash for good cause on Land's End to John O'Groats cycle ride

We Are Moving!

Come and see us from August at our New Shop

PURBECK WHOLEFOODS

19 North Street, Wareham BH20 4AJ

contact@purbeckwholefoods.co.uk 01929 552332 www.purbeckwholefoods.co.uk



SWANAGE & PURBECK TAXI

Local & Long Distance. 4-8 seater. also drivers required. Please call

07969 927424

SWANAGE TYRES

NOW TESTING CLASS 4 & CLASS 7 VEHICLES!

6 Victoria Avenue Industrial Estate, Swanage

01929 421398

WPM Residential Lettings

If you need to Let or want to Rent, contact WPM. We offer a personal service to Landlords & Tenants

15c Commercial Rd, Swanage 01929 426200

Web: www.wpmlettings.co.uk

Email: wpmlettings@gmail.com

What's inside this issue...

Arts & Entertainment	41-44
Business	36-37
Durlston Country Park events	21
Events Diary	49-50
Food & Drink	26
Gardening	27
Health & Wellbeing	28-29
History	19
Letters	34
Local Services	51-54
Margaret Green Animal Rescue	38
Motoring	31
National Coastwatch	22
Natural Matters	23
Pets	38-39
Politics	32-33
Recruitment	11
Sport	35
Telling It Like It Is	20
Wareham Town Council report	9

NEWS

Music by the Sea concert	4
Poole Flower Show preview	4
'Purbeck Schindler' statue	5
Britain in Bloom visit to Wareham	6
Beach litter complaints	8
Margaret Green dog show	12
Steam loco restoration milestone	14
Wareham church's 1,000-year plaque	16

Opening Hours:
Monday-Friday
9am - 5.30pm

Book Online:
purbeckgazette.co.uk

The Purbeck Gazette
is delivered by:



We distribute 20,000 copies of the Purbeck Gazette to properties in Purbeck utilising Logiforce GPS-tracked delivery teams.

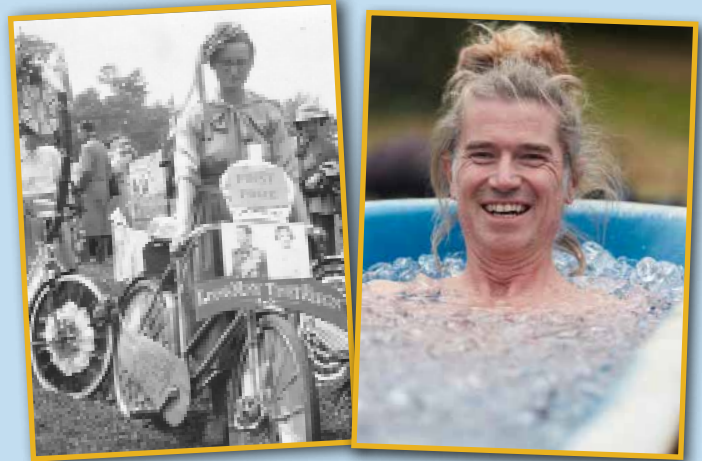
(Residents who live up long driveways or in lesser populated areas will probably not get a door-to-door delivery. You will not receive a copy if you display a 'no junk mail' sticker on your letterbox)

Purbeck has a population of approx. 45,300, we print & distribute 20,000 copies for Purbeck and further afield (Crossways, Broadmayne, Bloxworth etc).

You will not therefore ALL get a paper copy! 1 in 3 properties get a copy. We ensure a good spread of distribution throughout the whole area to get the best response for our advertisers, who are our business customers.

We publish in-full online for those households who do not receive a paper copy through the door.

See: www.purbeckgazette.com



■ Left – Wareham Museum is marking the Queen's Platinum Jubilee with a display of photos, magazines and souvenirs from Royal events in Wareham in years gone by. Turn to page 19.

■ Right – Ice baths are just a small part of Camp Bestival previewed on page 42.

ADVERTISING



Debi Thorne

Advertising Sales Manager

Debi.thorne@blackmorevale.net
07714 289409



Donna Garner

Account Manager

Donna.garner@blackmorevale.net
07714 289408



Jane Toomer

Senior Account Manager

Jane.toomer@blackmorevale.net
07714 289411

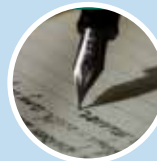


Jaz Radford

Classified Adverts

adverts@purbeckgazette.co.uk
01963 400186

EDITORIAL



We love hearing your news and views.

Get in touch with us by emailing:

ed@purbeckgazette.co.uk



Lloyd Armishaw

Publisher

ed@purbeckgazette.co.uk
01963 400186



Bramble Bush Bay, Studland. PHOTO: Robin Boulwood

Public Notices & Information

Swanage Town Council Meetings – AUG 2022

PLEASE CONTACT THE COUNCIL DIRECTLY FOR INFORMATION

Phone: 01929 423636
<https://swanage.gov.uk/>

Wareham Town Council Meetings – AUG 2022

PLEASE CONTACT THE COUNCIL DIRECTLY FOR INFORMATION

Phone: 01929 553006
<http://wareham-tc.gov.uk>

Dorset Council

For details of council meetings, councillors and decisions please use the web address:
www.dorsetcouncil.gov.uk/committees
 Alternatively, if you use the old 'Dorsetforyou' address:
www.dorsetforyou.gov.uk/committees - you will be redirected to the same link called 'committee meetings and papers'.

About The Blackmore Vale Ltd

The Purbeck Gazette prints 20,000 copies every month and delivers throughout the region from Swanage to Dorchester, Lulworth to Bere Regis. The Purbeck Gazette is published by The Blackmore Vale Ltd. All editing, graphic design and lay-up is completed in-house by The Blackmore Vale Ltd.

The Purbeck Gazette is printed by Blackmore Ltd of Shaftesbury and delivered by Logiforce GPS-tracked distribution. The Purbeck Gazette website is managed and edited by The Blackmore Vale Ltd. Blackmore Vale Ltd also publishes The Purbeck Guidette, the Purbeck Visitor Guide. All rights reserved.

OUR TEAM: The Gazette team consists of: Lloyd Armishaw, Debi Thorne, Rusty Harness and Mark Pritchett.

The legal stuff...

Every effort is made to ensure the accuracy of information contained in this magazine, but the Editor is unable to accept responsibility for any omissions or errors that may occur.

The inclusion of any article or advertisement does not constitute any form of accreditation or approval by the Editor.

No part, written or visual, of this publication may be reproduced without written permission of the Editor.

Compiled by National Coastwatch Institution, Swanage								
Solar & Tidal Predictions - Aug '22								
Peveril Ledge, Swanage								
Date	HW	LW	HW	LW	HW	Moon / Tides	Sunrise	Sunset
01-Aug		06:36	11:55	18:53			05:35	20:53
02-Aug	00:06	07:08	12:26	19:27			05:36	20:51
03-Aug	00:38	07:43	13:01	20:05			05:38	20:49
04-Aug	01:16	08:23	13:43	20:49			05:39	20:48
05-Aug	02:01	09:10	14:33	21:44			05:41	20:46
06-Aug	02:58	10:10	15:35	11:52			05:42	20:44
07-Aug	04:16	11:28	16:58			NP	05:43	20:43
08-Aug		00:15	05:55	12:52	18:26		05:45	20:41
09-Aug		01:31	07:10	14:03	19:39		05:46	20:39
10-Aug		02:36	08:13	15:04	20:42		05:48	20:37
11-Aug		03:32	09:08	15:57	21:37		05:49	20:35
12-Aug		04:21	09:56	16:45	22:26	FM	05:51	20:34
13-Aug		05:07	10:40	17:29	23:09		05:53	20:32
14-Aug		05:51	11:22	18:13	23:50	SP	05:54	20:30
15-Aug		06:33	12:03	18:55			05:56	20:28
16-Aug	00:29	07:14	12:44	19:37			05:57	20:26
17-Aug	01:09	07:56	13:25	20:20			05:59	20:24
18-Aug	01:51	08:39	14:08	21:07			06:00	20:22
19-Aug	02:38	09:29	14:56	22:05			06:02	20:20
20-Aug	03:34	10:38	15:54	23:21			06:03	20:18
21-Aug	04:42	11:54	17:07			NP	06:05	20:16
22-Aug	05:59	00:34	18:30	13:04			06:06	20:14
23-Aug		01:43	07:14	14:09	19:48		06:08	20:12
24-Aug		02:38	08:12	15:00	20:39		06:09	20:10
25-Aug		03:21	08:53	15:41	21:13		06:11	20:08
26-Aug		03:59	09:27	16:18	21:42		06:12	20:06
27-Aug		04:34	09:58	16:53	22:12	NM	06:14	20:04
28-Aug		05:08	10:28	00:00	22:41	SP	06:15	20:02
29-Aug		05:41	10:57	17:57	23:09		06:17	19:59
30-Aug		06:12	11:26	18:29	23:38		06:19	19:57
31-Aug	00:09	06:43	12:32	19:01			06:20	19:55

NM = New Moon + FM = Full Moon + NP = Neap tides + SP = Spring Tides

All times are local 08-22

News

Henry's and Will's legacies live on through Music by the Sea

By Lorraine Gibson

RAISE your mood, as well as much-needed cash, for Swanage-based charities at Music by the Sea, a concert by local musicians.

The daytime gig for all ages is particularly close to the town's heart for two reasons.

It's organised by www.willdoes.co.uk, a charity founded in honour of William Paddy, an animal-loving boy with a cheeky grin who grew up near Swanage, loved horse riding, snowboarding, rugby and tennis, but sadly died aged 14.

Will's mum, Les, set up willdoes in his memory to help young people who find themselves struggling to cope with daily life.

The gig also pays tribute to another local boy, Henry Searle, who at the age of 19 was given 12 to 14 months to live after a brain cancer diagnosis.

Henry survived longer than expected and his family says it was the support, generosity and kindness of family, friends, local charities, far-reaching communities of fundraisers, medical



Henry Searle was diagnosed with brain cancer at the age of 19. Professionals and strangers worldwide that gave Henry more precious years of quality life.

His mum, Vicki, said: "After the success of last year's Music by the Sea, and to keep Henry's memory and Will's charity going, local acts will be performing songs Henry loved, and there will be food and stalls run by Cancare and Willdoes.

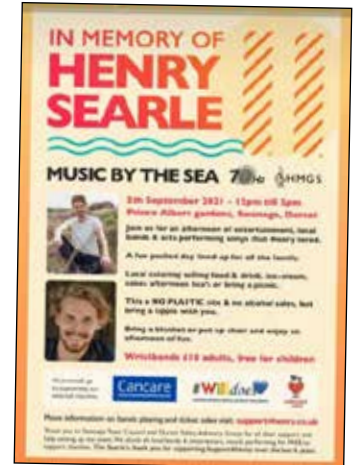
"We supported Save the Ambulance Car's administration costs last year – it was a great result for

Swanage."

Vicki added: "We want to continue to support locally in Henry's memory, as a thanks for the love and kindness we received from Swanage during his seven-year battle."

Music by the Sea is ideal for families and is a plastic- and alcohol-free event.

Local caterers will be selling food, tea and cakes or you can bring your own picnic – and a blanket or chair – and don't forget to tip or give generously wherever possible to these worthy causes!



Wristband/entry:

Adults £10, children free (16 and under). Proceeds will support Willdoes, Cancare and Save Our Ambulance Car.

Buy wristbands on the day or in advance from www.support4henry.co.uk and www.willdoes.co.uk and collect – using your confirmation email as proof of purchase – from the entrance or Finance Office, Swanage Railway BH19 1AU and Eve, 361 High Street, Swanage.
 ■ Music by the Sea, Prince Albert Gardens (BH19 2AR), Sunday, 4 September, noon to 5pm.

Flower show is back in business

THE long-running Poole Flower Show is set to re-launch post-pandemic and raise funds for local community hospice Lewis-Manning Hospice Care, which supports patients with life-limiting illnesses and their loved ones in Purbeck, Poole and East Dorset.

The show will run over two days on Saturday and Sunday, 27-28 August, at the Hamworthy Club, Magna Road, Canford Magna.

The popular show, sponsored by Compton Acres, is being organised by husband-and-wife team David and Pam

Bassil, as they have done for over 20 years now.

David said: "The show has been a part of the local show calendar for many years and everyone is thrilled the flower show is re-starting as it's been sorely missed, as we were forced to abandon it during Covid times.

"Exhibitors are growing flowers in advance of the show. There will be different classes for judging, including flowers, fruit and vegetables, floral arrangements and pot plants. There will be 139 different classes and lots of trophies to award!"

"There will also be handicraft, cookery and children's classes. Poole Flower Show is very fortunate to have some well-known local faces to assist with judging. Names include dahlias judge Gwynne Davis, who's a renowned horticulturist.

"John Lockwood will be judging the Fruit and Vegetables categories. He is a former horticultural officer at Poole Council with a breadth of knowledge and passion for his subject.

"Marion Martin will judge pot plants and cut flowers categories. She's a long-

standing judge who also runs the Busy Bees gardening club on Canford Heath."

Compton Acres owner Bernard Merna said: "Compton Acres are honoured and excited to be sponsoring Poole Flower Show and supporting the great work of a fantastic local charity."

David added: "The last date for entering the competition will be three days before the show and it is hoped the level of interest achieved in 2019 will be matched."

To find out more and to enter, contact David at dcbassil@tiscali.co.uk

News

Statue pays tribute to teacher who saved hundreds of children

THE heroic work of Swanage schoolteacher Trevor Chadwick, 'the Purbeck Schindler', has been recognised in a life-size statue to be unveiled later this month.

Chadwick's difficult and dangerous work in Prague, Czechoslovakia, was critical to saving 669 children from certain death at the hands of the Nazis just before the outbreak of the Second World War.

The Trevor Chadwick Memorial Trust started its appeal two years ago to pay tribute to the unsung hero by planning to erect a statue near the recreation area at Swanage seafront.

The trust has so far raised

more than £70,000 of the total of £80,000 needed, with many in the community providing donations in support of the cause.

Local sculptress Moira Purver has created the statue which will be unveiled on Bank Holiday Monday, 29 August, at 3pm.

Three of Trevor Chadwick's grandsons will carry out the unveiling and Swanage Town Band will be playing. Everyone is welcome to go along.

Oskar Schindler was a German industrialist credited with saving the lives of 1,200 Jews during the Holocaust by employing them in his factories.



HAND IN HAND
The life-size Trevor Chadwick statue on Swanage seafront.

100th Birthday

On 13th August 2022 Eileen Mary Stuckey nee Lill, former Deputy Head of Wareham Secondary School, celebrates her 100th birthday. Congratulations and best wishes from all family and friends.

LULWORTH
DORSET

TRADITIONAL PUB • KITCHEN • GARDEN

THE WELD ARMS

East Lulworth BH20 5QS • theweldarms.co.uk • 01929 400 211

LULWORTH CASTLE & PARK

A Magnificent Building Steeped in History...

C17th Castle • Chapel • Church
Extensive Parkland • Woodland Walks
Playground • Castle Tearoom

OPEN SUNDAY - THURSDAY
10:30-5PM

Our Brand New Peacock Park
Woodland Playground is Now Open
Car Parking £5 All Day
Castle Admission
Adults £7 • Children £3/£5 • Under 4's Free

Find Us: East Lulworth, BH20 5QS

Castle Closed 29th July - 6th August
For Castle Details
Please Call 01929 400 211

LULWORTH

01929 400352 • www.lulworth.com

lulworth.com

10th & 11th September

10am to 5pm both days

ENJOY
A GREAT
DAY OUT

TICKETS
£7 IN ADVANCE
OR £8 ON THE DAY
UNDER 15s FREE

BUY
TICKETS

www.cheesefestival.co.uk

Fine Cheese, Foods, Crafts, Real Ale,
Entertainment and much more...

News

Britain in Bloom judgement day

BRITAIN in Bloom judge John Lockwood toured Wareham, an entrant in the Small Town section in the South and South-East region, on a perfect sunny day.

He walked around the town centre, including the Library garden, the Cemetery, Rempstone Centre and Church Green.

He then followed a driving route taking in the Town Pound, the Friends of Wareham Hospital garden, Purbeck Youth Centre garden, the Youth Club and Purbeck Day Centre allotments at Northmoor and the Northmoor Wildlife Haven – where a group of local volunteers have turned 17 large wooden sleeper boxes into a superb example of community gardening at its best.

Wareham Community



In the library garden.

Growers (WCG) chairman Rod Curtis said: “We were judged under the themes of ‘Horticulture, Environment and Community’.

“I thank the town council for its stunning Jubilee-themed flower displays this year and also our hard-working WCG members – along with every local business, voluntary group and resident who has contributed in any way towards judging



Explanation of a community wildlife survey at Lady St Mary Church day.

“With a Silver Gilt award last year, we are still ‘Going for Gold’. Results will be announced in September – in

the meantime we are organising our own local ‘In Bloom’ competition. Watch this space, fingers crossed for Wareham!”



Diamond Dolly Evening Cruise

After your ‘9 to 5’ come and join us for an evening of fun, food and dancing with Diamond Dolly. Enjoy watching the sunset in Poole Harbour whilst listening to the best hit’s from our very own tribute to Dolly Parton.

Your ticket includes:

- 3 hour cruise
- Live Performance from Diamond Dolly
- Food 50’s Hot Dogs & Popcorn

FROM
£35PP

Cruise day
16th Sept 2022

Boards	7:15 pm
Departs	7:30pm
From	Poole Quay
Return	10:30pm

citycruises 
by Hornblower™



Air Festival Cruises

Choose from two amazing packages:

Cruise days

1st, 2nd, 3rd, 4th September 2022

Package 1: Full Day
£55 per person

Your ticket includes:

- 6 hours & 15 minute cruise
- 2 course BBQ
- Fully licensed bar

	Departs	Returns
Thursday	12:00pm	6:00pm
Friday	11:30am	6:00pm
Saturday	11:30am	6:00pm
Sunday	12:15pm	5:30pm

FROM
£19.50PP

Package 2:
Red Arrows
£19.50 per person

Your ticket includes:

- 2 hours & 45 minute cruise
- Fully licensed bar

	Departs	Returns
Thursday	3:15pm	6:00pm
Friday	3:15pm	6:00pm
Saturday	3:15pm	6:00pm
Sunday	12:15pm	3:15pm

BOOK NOW:

citycruisespoole.com
or +44 (0)20 77 400 400



News

Fete funds fun time for young carers

VILLAGERS were delighted to attend and contribute towards the much-missed Worth Matravers Village Fete again in May – and now funds raised have been donated to local causes close to residents’ hearts.

Fete chief organiser Jack Ross said: “We were delighted to have been able to reinstate our charity fete and help raise much-needed funds for MYTIME and the restoration of our church roof.

“Our community really benefited from this opportunity to come together and help create such a successful event.”

MYTIME chief executive Krista Sharp said: “MYTIME has been overwhelmed by the generosity and support received from residents in Worth Matravers.

“Funds raised will enable us to host a fun-filled festival day for more than 60 young carers



Charlie and Karen from MYTIME with fete organiser Jack Ross.

at the MYTIME R&R Retreat Centre in Worth during the summer holidays.

“We feel very lucky to belong to such a wonderful community and we couldn’t do what we do without them.”

MYTIME provides young carers with a break at its outdoor centre in Worth Matravers. These breaks are an opportunity for youngsters to have fun, make friends and take some time for themselves.

Future village events in Worth can be found on the village website, www.worthmatraversvillagehall.org



Locals involved in the village fete at Worth Matravers.

ASHLEY BLINDS
awnings • shutters • curtains
perfectly made to measure

TRADING STANDARDS APPROVED

BUY WITH CONFIDENCE

MADE IN BRITAIN

LOCAL FAMILY COMPANY
ESTABLISHED 20 YEARS
FREE home appointment,
expert survey and fitting
01929 498028
www.AshleyBlindsUK.com

Est. 2002 by Martin & Vera

DOOR TO DOOR DISTRIBUTORS WANTED

in the Wareham & Swanage area.
For full details contact
Lorraine - 07850 529937 or email
lorraine_drake@iCloud.com

Square & Compass
Worth Matravers
www.squareandcompasspub.co.uk 01929 439129

AUGUST 2022

WE HAVE LIVE MUSIC !!

5th - Savage Underdogs 9pm
14th - Fantasy Orchestra 2pm.
19th - Dana Wylie 9pm
20th - Kitty Stewart 9pm
21st - Fellow Pynins 2pm

Visit the squareandcompasspub.co.uk for updates

HEIRLOOMS
JEWELLERS & SILVERSMITHS

Expertly curated
Antique,
Pre-owned
and
Modern Jewellery

BEFORE COMMISSIONERS
VALUATORS
JEWELLERY AND SILVER REPAIRS
ENGRAVING - RESTORATION
CLOCK & WATCH REPAIRING

21 South Street, Wareham, BH20 4LR
01929 554207 www.heirloomsjewellery.co.uk

RICS

News

Beach litter levels still rubbish, says Oly

By Lorraine Gibson

WORLD-RECORD breaking swimmer and eco-crusader Oly Rush is so fed up with beach-goers leaving their litter on Dorset's sands he's setting-up a charity to deal with it.

He and his supporters regularly rid the beaches of plastic but when he recently saw the amount left on one of them he blasted the thoughtless people who'd left it strewn with rubbish over the hot July weekend.

Oly, from Upton, visited Bournemouth beach in the evening and was appalled at the amount of plastics, beer cans and other detritus left behind – worse, this is being



Oly Rush is frustrated by the amount of rubbish left on beaches.

repeated around the coast and he's urging beach-goers to stop being selfish.

After breaking the world record for swimming around the Isle of Wight last year to highlight pollution, he's since become the first person to swim around Grand Cayman.

Now he aims to turn his

Project Planet group of beach cleaners into a registered charity to devote more time to cleaning the oceans.

He said: "I knew the beach would be a mess. The council cleans it all up in the morning, so often people don't get to see what it's like after a hot day. If more people did, they might

think twice.

"There are bins all along the promenade but still people leave their waste on the sand. It doesn't seem to matter how many signs there are – or awareness campaigns – some people don't take any notice.

"But if you ask them to take their waste home and give them a bag, most people will do it – it just needs mild shaming. With hot weather ahead, I'd urge everyone to dispose of their litter or take it home. Don't be selfish.

"I now want to get into schools to educate the children and also clear our coasts of plastic which can then be recycled."

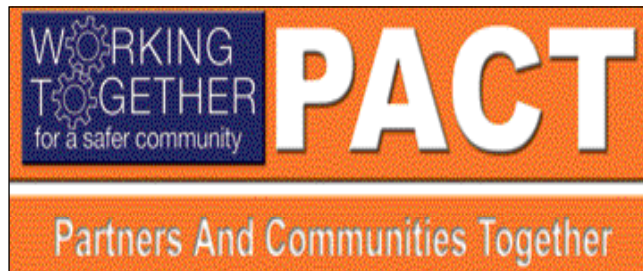
Out Of The Blue

ANOTHER busy month in Purbeck with Swanage Carnival in full swing and the school holidays under way. We know you are busy in these summer months, but if you can find five minutes to spare, we would appreciate it if you could let us know your opinions, so keep those priority surveys coming – <https://www.surveymonkey.co.uk/r/PurbeckEmail>

So, what have we been up to? Well, between 7 June-7 July we dealt with 630 occurrences in Purbeck, of which 210 were recorded crimes and resulted in 69 arrests. There were also 106 road traffic collisions.

At this time of year, with people on holiday and car parks overflowing, we experience an increase in thefts from vehicles. Please be vigilant and report any suspicious activities immediately. For general advice regarding theft from unattended vehicles – <https://www.dorset.police.uk/help-advice-crime-prevention/home-property-belongings/vehicle-crime-removeitlockit/>

- Remove everything of



value from the vehicle before arriving at your destination – thieves will see you hiding things in the boot, glovebox or footwell.

- Take items with you if possible, including any removable stereos and sat-navs, and wipe off any marks left by your sat-nav.
- Ensure your windows and doors are secured and secure before you walk away.
- Double check the central locking has worked and the vehicle is secure.
- Keep driving documents and personal

correspondence at home.

- Where possible park your vehicle in a busy, well-lit area.
- Never leave your keys in the vehicle, even if you are just leaving it for a few seconds.

And finally, if you need to contact Dorset Police, please call our Police Enquiry Centre on 101 or email 101@dorset.pnn.police.uk Always call 999 in an EMERGENCY when there is a risk of HARM or a CRIME in progress. Alternatively, call the free CRIMESTOPPERS line on 0800 555111.

You can also use our website to report several issues, from full crime reports to lost property – just use the following link: <https://www.dorset.police.uk/do-it-online/>

Don't forget to visit us on

our Facebook page [Facebook.com/Purbeck-police](https://www.facebook.com/Purbeck-police) and Twitter – @PurbeckPolice – we really value your support and comments. You can also see our latest priorities and up-and-coming events at <https://www.dorset.police.uk/neighbourhood-policing/purbeck/>

Why not register on Dorset Alert. By registering for free Dorset Police community messaging alerts you will receive information on local crime and incidents where we believe sharing information with you will help to prevent further offences occurring, crimes and incidents where you may be able to help by providing vital information, current crime trends, crime prevention advice and Safer Neighbourhood activity, and opportunities to meet the team. You can also receive news from our partner agencies such as Dorset Fire and Rescue Service and Trading Standards, and community safety messages.

**PURBECK
NEIGHBOURHOOD
POLICING TEAM**

News from Wareham Town Council – June

APOLOGIES to the Sea Cadet whose bagpipe I changed into a bugle in May's report of the council's Jubilee event. I was there and he played brilliantly!

Dorset Council's (DC's) Household Support Fund exists to help pensioners who receive pension credit or who spend ten per cent or more of their income on fuel and have less than £10,000 in savings. Phone 01305 221027 or ask Citizens Advice East Dorset and Purbeck on 0800 144 8848.

Everyone eligible should have received their £150 Council Tax Rebate by now.

Ukrainian refugees and their hosts meet as a group in Not Just Sundaes.

Construction of the cycle/footpath link from the A351 to Northmoor Way was delayed while a mammal tunnel was installed.

Cllr Cotton said the DC survey on the Worgret Road playing field included questions about its use which were not relevant because the field was not open to the public.

A project manager is to be appointed to oversee the refurbishment of Wareham Council's four play areas. The pitches at the Recreation Ground are to be improved. A building survey of the town hall will be carried

out.

The candidate offered the position of town clerk had declined. Another conditional job offer had been made and it was hoped to engage a locum until the new town clerk can

start. The deputy town clerk has resigned and the position is advertised on the council's website.

Charles, the street cleaner, retired on 1 July.

Councillors did not know if he would be replaced. It was suggested that litter collection at the weekend was more important than on weekdays.

The council was to write to

Aster to ask it to re-build the garages on the north side of the site in Moretons Lane – a little larger and with electric vehicle charging points, if possible. The garages had been out of use since December 2019 and there is a waiting list for garages.

For various reasons, including building regulations, no progress had been made on the provision of an office for the council and tourist information in the Corn Exchange. Not Just Sundaes was offering to temporarily host tourist information and was applying to the council for a loan to buy materials.

The town council's next meetings are on Tuesdays 9 August and 20 September, and members of the public are welcome to attend at 7pm in the town hall. Further information is available on the council's website, www.wareham-tc.gov.uk, or from the office on 01929 553006.

JULIE BRADSHAW



STOCKISTS REQUIRED

The Purbeck Gazette is seeking new outlets for the magazine. For full details contact Lorraine on 07850 529937 or email lorraine_drake@iCloud.com

PERSONAL INJURY

GET THE COMPENSATION YOU DESERVE

If through no fault of your own, you have suffered accidental injury or medical malpractice, speak to one of our highly experienced personal injury solicitors.



Read Rob Dutton's article on compensation for accidents at work

Personal relationships built on trust and understanding...

...that's refreshing | www.hklaw.uk



HK Humphries Kirk
SOLICITORS

Get in touch with our experts.

■ Bournemouth 01202 421111
■ Dorchester Office 01202 540507
■ Dorchester 01490 279100
■ Dorchester 01306 201007

■ Poole 01202 710916
■ Poole 01202 725400
■ Bournemouth 01202 423301
■ Wareham 01929 532141

www.hklaw.uk

WAREHAM LIONS CLUB
SWIM FOR CHARITY 2022
 SATURDAY 15th and SUNDAY 16th OCTOBER 2022
 At the PURBECK SPORTS CENTRE

The Swim is open to all clubs, business houses, schools, associations, youth Organisations, family groups etc, there is no limit to the number of teams entered by any organisation

Each Team participating may consist of up to 15m swimmers with an adult NON swimming team captain. Each team will be responsible for their own sponsorship.

Each team will receive 75% of their sponsorship with 25% going to the Lions

Wareham Lions Club will organise, supply necessary forms and will be running the event on the Saturday and Sunday.

For further information contact John Goodwin
 Telephone: 01929 552170 Email john.goodwin17@btinternet.com

SELF STORAGE UNITS

From 10ft x 6ft up to 15ft x 16ft
 For furniture, classic cars, documents
 Insured & Alarmed
 At East Stoke, Wareham
www.purbeckselfstorage.co.uk
 Call 07836 369969

PURBECK MOBILITY CENTRE
 SALES · HIRE · SERVICING

FOR ALL YOUR MOBILITY NEEDS, MORNING, NOON AND NIGHT

Cosyfeet

Come and meet us at St. Johns Hill, Wareham, Dorset, BH20 4NB
 Disabled parking directly outside shop
 Monday to Friday 9am-5pm, Saturday 9am-1pm.
www.purbeckmobility.com
shop@purbeckmobility.com
 01929 552623

LINK UP ON FACEBOOK @Purbeckmobility

News

Go on, try something new at 'The Shed'

DURLSTON Country Park in Swanage is inviting people to join a new weekly group at 'The Shed'.

The session is led by one of the park's rangers and welcomes people of all ages and abilities to socialise, learn new skills and volunteer in support of Durlston.

The 'Everyone Needs a Shed!' project offers a relaxed style of working with tasks like gardening, woodworking, painting, crafts and more.

Volunteering at The Shed is open to all, including people with disabilities and long-term health conditions.

Assisted by its team of 'Sheddies', 'The Shed' hosts a variety of sessions every week,

including 'Cuppa & Chat', which aims to bring people together and make new friends, and activities for students with autism from the Purbeck View School.

'Everyone Needs a Shed!' was established as part of the Durlston Pleasure Grounds Project at Dorset Council's Durlston Country Park in 2019. The project aims to enhance the Victorian landscape at Durlston for people and wildlife.

Ben Holley, a community ranger at Durlston Country Park, said: "Over the past few years The Shed has grown into a brilliant asset for the park and our local community.

"We are excited to expand opportunities once again with the new Tuesday volunteer session – please come along and get involved".

The new weekly group is every Tuesday 2-4pm. To find out more and learn about all the available sessions visit www.durlston.co.uk/EveryoneNeedsAShed.aspx

MJ Furnishing
 15 West Street, Wareham - 01929 552773
www.mjfurnishing.com

From Carpets, Designer Flooring, Curtains and Blinds, to Sofas and Beds. We offer quality, affordability and unbeatable service

Sherborne
 Lift & Rise Recliners

SHAKESPEARE Beds

01929 552773

Volunteering at Swanage Railway

THE Swanage Railway has been carrying visitors to Purbeck between Swanage and Norden for nearly 30 years using beautiful heritage steam locomotives and carriages.

Entirely rebuilt by volunteers since the line was abandoned by British Rail in 1972, the railway is now one of the biggest tourist attractions in the area.

We are a friendly and social team, so why not join our volunteers who carry out virtually all of the operational and maintenance tasks needed to carry upwards of 200,000 passengers annually.

We currently have volunteering opportunities in our catering outlets at Norden, historic Corfe Castle and Swanage. Full training will be given if required.

If you think volunteering at Swanage Railway is for you, please contact Jonathan Evans, Volunteer Recruitment & Retention Officer, by email at iwanttovolunteer@swanagerailway.co.uk or by phone on 07436 792026 to arrange a meeting at Swanage station to discuss what the railway can offer and how you can start helping today.

Museum needs helpers

THE Purbeck Mining Museum, which opened in 2014, records the history of ball clay extraction, the mines, the pits and tramways that once dominated the landscape and still are in evidence over the heathland we see today.

Ball clay is a key ingredient used in many products in the ceramic and porcelain industries both nationally and internationally.

The Museum is centred around an original clay transshipment building and a narrow gauge railway, both of which were once common sights in Purbeck the 19th and 20th centuries.

We are currently looking for enthusiastic

and friendly volunteers to carry out front-of-house duties, welcoming our visitors and giving them a brief introduction to the museum, the area and its heritage.

Full training will be given, and as part of the Swanage Railway Trust, all volunteers are entitled to the same benefits as those who volunteer on the heritage railway.

Further information on the Purbeck Mining Museum can be found at www.purbeckminingmuseum.org

If you would like to find out more about volunteering with us, please contact Jonathan Evans on iwanttovolunteer@swanagerailway.co.uk



Join our catering team of friendly & social volunteers

We currently have opportunities for Hospitality Assistants at our catering outlets at Norden, historic Corfe Castle or Swanage.

No experience necessary - full training will be given

To find out more please contact:
iwanttovolunteer@swanagerailway.co.uk



Get involved with the heritage and history of Purbeck's industrial past



The Purbeck Mining Museum at Norden is looking for friendly and enthusiastic volunteers for front-of-house activities, welcoming visitors to explore the interactive exhibits of this fascinating museum.

To find out more about our opportunities please contact:
iwanttovolunteer@swanagerailway.co.uk

News

Family fun with four-legged friends

By Lorraine Gibson
WAGGIEST Tail and Most Appealing Eyes are just two of the titles up for grabs at what promises to be one of summer's most fun events.

Margaret Green Animal

Rescue will be raising money for the animals in its care at this year's pet-friendly Country Dog Show at the charity's Church Knowle Centre.

They promise a fantastic day

of dog show classes, exciting attractions, local traders' stalls, plenty of refreshments and loads of other fun stuff – like have-a-go agility, flyball and a raffle.

The charity is especially grateful to the local businesses and supporters sponsoring classes this year, so take a bow: Hillside Veterinary Centre: Child Handler (six to 11 years) and Waggiest Tail; Sooty and Sam: Best Condition (Male); The BV Magazine: Best Rescue (Male and Female); Purbeck Ice Cream: Child Handler (12 - 16yrs); Burn Technology Limited: Best Condition (Female); Paul Hutton-Cornish: Most Appealing Eyes.

"We are so grateful for all their support and we are really looking forward to seeing you and your four-legged friends on the day," said the team.

"If you would like to



The eyes have it: Most Appealing Eyes is one of the classes at the dog show.

sponsor a dog show class, email comms@mgar.org.uk and a member of the team will be in touch with further details."

For more information about the event visit www.margaretgreenanimalrescue.org.uk

GOT A STORY? Email ed@purbeckgazette.co.uk

MATT HILLAN
Building Alterations
& Maintenance
All Trade Aspects Undertaken
Free Estimates Fully Insured
01929 427296
07971 690817
Happy to help and advise

**Curtains
by Clare**
Have your curtains
made for you
at very reasonable rates
Also curtain repairs
and alterations
Phone 01929 550714
mobile 07969 695338

REMOVALS

CLIVE R. CRABB
01929 427922
07974 383159
clivecrabb12@gmail.com
Waste Carrier License Holder
**HOUSE REMOVALS, HOUSE CLEARANCES,
SHED/GARAGE CLEARANCES, 'MAN & VAN' SERVICES,
COLLECTION/DELIVERY TO & FROM AUCTIONS
FLAT PACK FURNITURE ASSEMBLY**



Blandford Fashion Museum is a small, unique, volunteer-led heritage organisation with big ambitions. We now have a number of vacancies that will help us achieve our aims and take us into the future.

MUSEUM OPERATIONS MANAGER – 12 MONTH CONTRACT

We are seeking applicants for a new role of Museum Operations Manager to assume responsibility for the day-to-day running of the Museum. This includes financial management, co-ordinating the volunteer management team, leading volunteer engagement, supporting the Museum's outreach activities and assisting with grant applications.

Although experience of working in a museum environment is ideal, it is just as important that applicants can demonstrate great organisational skills, the ability to engage and inspire others and have the ambition to make a difference.

This is a part time (22.5 hours per week), one-year contract role – with the potential to extend. The successful candidate will be responsible for their own tax and insurance.

Safety certificates with experience.

VOLUNTEER ROLES

TREASURER/TRUSTEE

Due to the resignation of our current volunteer Treasurer, the Museum is seeking applicants for the role of a Museum Treasurer who also sits on the Board of Trustees.

Supported by the Museum Operations Manager the role is responsible for guiding the Board and the Museum in all aspects of financial and accounting management, including the preparation and submission of Annual Reports and audited accounts to HMRC, Companies House and the Charity Commission as required.

Experience and knowledge of preparing reports and accounts, business accounting methods and banking procedures is essential.

PUBLICITY OFFICER

The Museum is also seeking applicants for the volunteer role of Publicity Officer.

Responsible for driving the Museum's publicity agenda, including social media, this role plays a key part in keeping the Museum in the public eye. Applicants should have a good command of written English, be comfortable using social media and experience (or a willingness to engage) with the media and press.

For further details and to apply for any of these roles please contact fashionmuseumblandford@gmail.com or 01258 453008

SUTTLES REDUCES CARBON IMPACT BY INVESTING IN 2 NEW LORRIES



In its drive to reduce emissions to Net Zero by 2040, Isle of Purbeck and Poole-based Suttle Stone Quarries, Dorset's stone experts, has invested over £290,000 in 2 new Volvo lorries for the delivery of its loose stone products. The new lorries are replacing older models, and are known to be more efficient, reducing the carbon impact on the environment by around 20 tCO₂e per year.

ABOUT THE LORRIES

The lorries were supplied by commercial transport group MC Truck and Bus, who were able to assist with calculating the carbon reduction benefit of replacing the lorries via Volvo's web-based footprint calculator tool. The new energy-efficient Volvo lorries deliver Suttles' crushed limestone and aggregate supplies to businesses and residents across Dorset, which are widely used for landscaping and engineering projects.



Suttle Stone Quarries' 2 new lorries

HOW THE LORRIES WILL HELP IN THE FUTURE

With Suttles' Swanworth Quarry stone reserves coming to an end, Suttles needs to protect the future of its business, the people it employs, as well as the future of local businesses who rely on its service. Since 2012, Suttles has been working closely with Dorset Council to extend the area it quarries and provide a package of nature and climate benefits. If the application is approved, the 2 new lorries will play an important role in the extension of the quarry. Keeping deliveries local will save thousands of tonnes of CO₂ emissions per year – the newer lorries will boost that figure even more.



SUTTLES' NET ZERO COMMITMENT

Suttles takes its commitment to the environment seriously and is on its way to achieving Net Zero emissions by 2040. Since 2018, the company has reduced its carbon footprint by almost 400 tCO₂e and is continuing to make improvements. Suttles painstakingly reviewed the whole of its business to see where it could make CO₂ savings. So far, it has installed 120 solar panels at its Worth Matravers quarry site, as well as upgrading its equipment and processes, which have led to savings of nearly 100 tCO₂e throughout 2021 alone.

Read more here:



Suttles
www.suttles.co.uk

News

Milestone in steam loco restoration

A UNIQUE Victorian steam locomotive has been re-wheeled in 'a hugely significant milestone' towards restoring the historic engine to full working order and returning it to steam for the first time since 1948.

Dating from 1893 and the last survivor of its class, London and South Western Railway T3 No. 563 had travelled a total of more than 1.5 million miles when it was withdrawn from service by the Southern Railway Company in August, 1945.

Bound for a scrapyard after being one of the finest express passenger train locomotives of the Victorian era, the T3 was saved from being cut up so it could be used to help celebrate the centenary of Waterloo station in London in 1948.

It is hoped to have the 81-tonne T3 locomotive back in steam and hauling trains, for the first time in 75 years, in



T3 No. 563 is being restored in the Forest of Dean, Gloucestershire.

time for the centenary of the Southern Railway and the 185th anniversary of the formation of the London and South Western Railway.

Part of an ambitious £500,000 restoration project, the locomotive's re-wheeling comes as the Swanage Railway Trust's 563 Locomotive Group appeals to the public to sponsor a boiler stay or a boiler tube to help with the cost of restoring the T3's boiler.

Subject to a further £150,000 being raised, the restoration of the T3 – which is owned by the Swanage Railway Trust after the locomotive was donated by the National Railway Museum in 2017 – could be complete by the summer of 2023.

563 Locomotive Group treasurer Steve Doughty said: "Reuniting the wheels with the locomotive's frames, to make a rolling chassis, is a hugely significant milestone.

"With both driving wheels and leading wheels in position, the stage is now set to complete the boiler this year and enable the final assembly."

Swanage Railway Trust chairman, and volunteer signalman on the railway, Gavin Johns said: "We are working hard to ensure the engine's preservation for future generations to enjoy and the best way to do that is by seeing No. 563 brought back to life so it can haul trains for the first time in 75 years.

"Given its Victorian heritage, the T3 has an incredibly rich history to tell and it is unique because it is the only surviving tender engine designed by the renowned locomotive engineer William Adams."

T3 No. 563 is being restored by specialist contractors at the Flour Mill workshops in the Forest of Dean, Gloucestershire.

You **can** get everything you want with your new carpet..

Spring Offer

80/20

Wool Carpet

From

£18.99

5q mtr

FREE
Estimates.
Full Fitting
Service.
Honest
Advice.



Purbeck Furnishing

Tel: 01929 422703

61 Kings Road West, Swanage, BH19 1HQ

Prefer to shop at home? If you have problems getting to us, we will come to you...Call us to arrange a FREE home visit!

Need Help? We will arrange to move furniture, take up your old flooring and remove all the rubbish. Just ask for details.

Carpets : Vinyls : Kardean: Beds: Curtains: Blinds:



KnitWits is the inspirational one stop Wimborne wool shop offering a range of yarns and accessories.

Coming soon!

YARNSTRAVAGANZA

17-24th September 2022

Supported by the UK Hand Knitting Association
a variety of events for knitting, crochet and
crafting

Knit Wits
the wool shop

Unit 1, Jessopp House Mill Lane, Wimborne BH21 1JQ

T: 01202 889629 W: knitwitsdorset.co.uk

News

Marathon ride on a bicycle made for two

PENSIONERS Bob and Sue Richardson, from Wareham, have been coining in the cash for a good cause on a tandem bike ride from Land's End to John O'Groats.

The pair, both in their 70s, took a month to complete the 2,000km journey in aid of the dermatology team at Poole Hospital and raised £2,221.

The team provided care when Bob developed Bullous Pemphigoid, a rare auto-immune disease which causes large, painful fluid-filled blisters to form on the skin.

Bob and Sue are enthusiastic tandem cyclists and when Bob was healthy again they began planning their fundraising adventure on their trusty bike 'Daisy'.

On the ride they endured every type of weather, including gale force winds and heavy rain, and kept their supporters up to date via their Facebook page.

Bob and Sue said: "We have achieved more than we ever believed we could. Thank you to everyone who contributed – it is humbling in these hard times and means so much to us.

"This department really have no idea how much they



Bob and Sue Richardson.

helped Bob to be positive when his diagnosis was made. He was at an extremely low ebb and feared the worst, but their care and compassion were exemplary.

"We have so much to think about and process. We faced our demons and survived. The most precious memories will be of the people we met, so kind and positive and so humbling. There we were, two naive pensioners on a quest to prove that age is just a number. We achieved that and we are proud. If we have inspired others, then that makes everything worthwhile."

Anyone inspired by Bob's and Sue's story can donate at www.justgiving.com/fundraising/bobsue-richardson22





Do you need some help ?

Our Volunteers are Ready & Willing
They can do all sorts of things for example:-

- Help with Shopping - Change Light Bulbs
- Move some Furniture - Remove Rubbish
- Re-tune TV or Help with Mobile Phone
- Small Repair Jobs

Just give us a call!
07726 458346

All we ask is a minimum donation of £2.00

Purbeck Good Neighbours

Working with Swanage
Linking Lives



Just Shutters

FOR BEAUTIFUL HOMES

01202 240 769

justshutters.co.uk

News

Plaque marks 1,000 years of church

A MILLENNIUM plaque to celebrate the 1,000th anniversary of Wareham's St Martin on the Walls Church has been unveiled.

Local sculptor Jonathan Sells designed and carved the plaque which depicts the story of St Martin cutting his cloak to share with a beggar.

The plaque was carved in Purbeck stone supplied from

W.J. Haysom's stone quarry at St Aldhelm's Head, Worth Matravers.

King Canute is said to have rebuilt the church in 1020 after an earlier place of worship at the site, believed to have been built by St Aldhelm in the 7th century, was destroyed by Vikings.

The idea for the plaque came about when local

resident Malcolm Lewis, who helps run the not-for-profit initiative Art4Action, noticed a small sign on the tower, giving the church's probable construction date as 1020, while out on a walk with his family during the first lockdown in 2020.

He said: "I thought a sign should be erected to mark our fantastic Saxon church's 1000-year anniversary, so I contacted a member of the Wareham Church of England family about organising it. However, they told me that while they had planned to have a little celebration party that year, there was no budget to pay for a stone plaque."

So, just before Christmas 2020, through the second of their Art4Action auctions that year, they raised a substantial portion of the funds needed to

pay for a plaque.

Jonathan Sells has lived with cerebral palsy and hearing impairment all his life.

He has lived and worked in Corfe Castle for 35 years and has produced several of public pieces locally.

He is probably best known in Wareham for his Cottes Auctioneers statue, created as a double celebration of 700 years of Wareham Market and 100 years of Cottes Auctioneers.

He also has public sculptures in Christchurch, in the Priory Gardens; in Bournemouth, outside the BIC; in Plymouth; Somerset (Highbridge); and London (Queen Mary University Hospital).

Jonathan said it was a great honour to create something to commemorate a church of such importance to Wareham.





Kayaking Trips Around Swanage Bay
British Canoeing Courses (Sea Kayak and Personal Performance)
Old Harry Rocks Sea Kayak Adventure
Kayak and Paddle Board Hire

BOOK YOUR NEXT ADVENTURE
07735 582663

H2OADVENTURES.CO.UK



GOT A STORY? Email ed@purbeckgazette.co.uk



POOLE
FLOWER
SHOW

SATURDAY 27TH
AUGUST 1PM - 5PM

SUNDAY 28TH
AUGUST 10AM - 4.30PM

THE HAMWORTHY
CLUB, CANFORD
MAGNA, BH21 3AP

TOMBOLA • PLANTS • CRAFTS
CAKES & PRESERVES STALLS

Sponsored by



COMPTON ACRES



Lewis-Manning
Hospice Care
Registered Charity No. 1120489



Veritable feast of all things vintage

POOLE Quay went back in time for a popular vintage festival following a two-year break due to Covid-19.

Visitors to the weekend-long Poole Goes Vintage, many in an impressive display of vintage-themed clothes and fancy dress, enjoyed the best of vintage music, dance, shopping and vehicles.

Shoppers had the chance to browse vintage accessories, clothes and shoes, as well as gifts,

memorabilia and vintage photography.

Sounds from the 1940-60s had visitors dancing in the street and the event also featured a display by Bournemouth Lindy Hop Club and of classic cars by South Coast Cruisers, and Pearl's Pin Up Parlour.

Fun for all the family included face painting and vintage fairground rides.

PHOTO: Tom Scrase



Purbeck's own crematorium

WITH the closure of Poole Crematorium, Harbour View has become the only crematorium in Poole and Purbeck.

Although the Poole Crematorium building is set to re-open in the Autumn, it will be as a ceremony hall only as it is not planned to replace the cremator.

The deceased will instead be transferred by road to Bournemouth Crematorium for an unattended cremation after the service, as has been the case since April 2020.

At Harbour View Crematorium and Woodland Burial Ground,

Advertiser's announcement

cremations are carried out in a stunning, purpose-built crematorium, set in a peaceful rural location next to ancient woodland.

The choice of three air-conditioned ceremony halls means small or large congregations can be accommodated comfortably.

Plenty of free parking is available just a short, level walk from the ceremony halls. A separation of at least 90 minutes is guaranteed between services.

State-of-the-art audio-visual equipment is available in each ceremony hall, and catering and refreshments are available at the Purbeck Tea Room, part of the main Ceremony Hall, which has spectacular views of Poole Harbour and the Purbeck Hills.

Harbour View also offers a beautiful woodland burial ground for the scattering or burial of cremated remains. Mourners may also use the grounds for peaceful contemplation and reflection.

Funerals at Harbour View can be arranged directly, without the need



for a funeral director; and because everything needed for a funeral service is available on-site there is no need for funeral vehicles or to move mourners between locations. Funerals at Harbour View can also be arranged exclusively through branches of Tapper Funeral Services. All-inclusive funeral packages are available from £2,795. For more information, visit www.harbourview.co.uk

The only crematorium in Poole, Purbeck and North Dorset

BCP Council has announced that Poole Crematorium at Gravel Hill will be closed until at least September 2022, and currently has no plans to replace the defunct cremators. Harbour View is an ideal alternative.

Funeral packages from **£2,795***



A complete funeral service is available directly, without the need for a Funeral Director.

A beautiful, peaceful location for funerals and memorial services

Easily accessible from the A35

At least 90 minutes between funerals

Air-conditioned ceremony halls

Full funeral home facilities available on-site

Ceremony halls suitable for small or large congregations

Catering facilities available on-site for wakes



Harbour View

CREMATORIUM | FUNERAL HOME | WOODLAND BURIAL GROUND

Available directly via Harbour View, or through any office of Tapper Funeral Services.

Call 01202 680111 or visit www.harbourview.co.uk

*Covered at time of printing, March 2022

News

Design a charm for the Queen

CHILDREN in Wareham are being given the chance to design a jewellery charm – and the winner will have their design made to keep and a copy sent to the Queen to celebrate her Platinum Jubilee.

Heirlooms of Wareham is celebrating five years of relaunching the business in the town and is inviting children and adults to design a piece of jewellery which includes an element of what makes living in Wareham special to them.

Heirlooms owner Amy Brenan said: “We love being a business in Wareham and there is so much to celebrate about its history, location and heritage. It’s going to be fascinating to find out what it means to other people.”

She added: “Children can design a charm for a bracelet or necklace, and adults can design a pendant that they feel



Heirlooms owner Amy Brenan. best shows how amazing it is living here.

“The winners will have their pieces made up to keep, as well as a copy of the winning children’s design being sent to the Queen.”

The closing date for entries is Friday, 26 August. Entry forms are available from the shop at 21 South Street, Wareham, or from its website, www.heirloomssoftwareham.co.uk/jewellery-design-competition

What are Lasting Powers of Attorney and why do I need one?

Like Wills, lasting powers of attorney (LPA's) are an essential part of estate planning. Why? While wills only come into effect once a person has died, LPAs are effective if someone is still alive but no longer able to function normally.

LPAs allow you to nominate a trusted person called an attorney. They can make decisions on your behalf if you are no longer able to do so.

An LPA gives the attorney the authority to act on your behalf. Both financially and with matters pertaining to your health and care. It goes without saying that attorneys must be people you trust.

“Without a ‘lasting power of attorney’ document created in advance, families can find themselves locked out of an ailing loved one’s finances and facing a complicated court process to be appointed their ‘deputy’, with fees running into many thousands of pounds.”

Chris Tennant

But what happens if someone doesn't have an LPA? If you lose mental capacity a bank would freeze all accounts – including any in joint names. Even family members would not be able to access them at first.

Obtaining access to the accounts requires a long, drawn-out application to the Court of Protection, and this is a far more expensive process than getting an LPA in the first place.

There are two types of LPA document – one that covers financial matters and the other health. You should get both types of LPA drawn up as soon as possible, well in advance of when – or if – they might be needed.

Advertiser's announcement

Monkey World provides a great day out

MONKEY World Ape Rescue Centre in Dorset is home to more than 260 primates, including 50-plus chimpanzees and Europe’s official crèche for orphaned orangutan infants.

Self-guided audio tours combine fun with conservation and animal education, and explain all about man’s closest living relative.

Visitors can see the stars of TV’s ‘Monkey Life’, then kids can ‘monkey around’ in the Great Ape Play Area with its variety of swings, slides and climbing frames.

You can even help Monkey World to rescue and rehabilitate more primates by adopting a monkey or ape. ‘Adoptive parents’ receive a year’s pass to the park, a photograph of their adopted primate, certificate and copies

of the ‘Ape Rescue Chronicle’ up to three times a year.

Kids can also learn through play throughout the holidays by joining the Monkey World Summer Challenge! For just £2.50, children can sign up to the challenge, which runs until October.

Each challenger will receive a card to fill with stickers and a Monkey World pencil. The park has a huge number of fun challenges and activities to complete, and those who manage to do five over the summer period will receive a certificate and be entered into a prize draw!

See the website for the full list of challenge dates and purchase the challenge at the adoption centre at the park.

Monkey World is just minutes from the A31 near Wool, and is open every day – except Christmas Day – 10am to 5pm. Book online to save up to 10 per cent off gate prices at www.monkeyworld.org/book-tickets/

Will Writing and Legacy Planning

Protect your assets from care costs and inheritance tax

Save on the cost of high street solicitors

- Will writing
- Lasting power of attorney
- Asset protection trusts
- Property protection trusts
- Inheritance tax solutions and probate
- Pre-paid funeral plans
- FREE consultations
- Fixed price on ALL products
- No hidden extras
- Free home visits and consultations



Institute of Professional Willwriters
PROFESSIONAL • ETHICAL • COMPETENT

☎ 07832 331594

maplebrookwillservices.co.uk

Book an appointment with a Maplebrook Wills by calling 07832 331594



Back to another Royal jubilee...

WAREHAM Museum is marking the Queen's Platinum Jubilee with a display of photos, magazines and souvenirs from Royal events and jubilee celebrations in Wareham in years gone by.

You can see these photos of celebrations marking the silver jubilee of King George V, the Queen's grandfather, in May 1935.

They show the carnival procession making its way down North Street.

Then, as now, it was an opportunity to dress up and make imaginative and whacky

floats. Some details in the street scenes have changed since 1935, such as the Methodist church, and the National Provincial Bank – later Natwest – but otherwise there are few changes.

Wareham Museum is in the Town Hall and is open Monday to Saturday, 10am to 4pm. Entrance is free.

The museum tells the story of the town from prehistoric times to the present day.

Wareham was one of the most important towns in the Saxon Kingdom of Wessex, and museum visitors are



greeted by a graphic of a Saxon king holding the iconic Wareham sword.

The museum also has a special display about T E Lawrence – Lawrence of Arabia.

And it has books, postcards

and souvenirs for sale, and free quiz sheets for younger visitors.

Find out more on its website, www.wtm.org.uk or Facebook page.

Ben Buxton
Wareham Museum



GOT A STORY? Email ed@purbeckgazette.co.uk

SWANAGE INSURANCE BROKERS Ltd
 Authorised and Regulated by the Financial Conduct Authority
 Confused when you compare the market?
 Don't go to compare, let us do it for you!
 Just call on **our** direct line.... simple.
01929 424228
 email: office@swanageinsurance.co.uk
MOTOR - HOME - COMMERCIAL - LIABILITY - TRAVEL

JAMES SMITH
FUNERAL DIRECTORS

SERVICE
Broad shoulders. So you don't have to carry the weight alone.

TEL: 01929 422 445
 OFFICE@JAMESSMITHFUNERALS.CO.UK
 JAMESSMITHFUNERALS.CO.UK

Douch Family
Funeral Directors

Telling It Like It Is

Lidl store plans good news?

Is it good to hear that Lidl will be putting in planning permission to build a supermarket at Sandford? Its aim is to create 40 new jobs with no zero-hours contracts and to 'significantly improve shopping options and choice for local people', 114 parking spaces, electric car charge points, retention of trees to the south-east of the site and existing hedgerows along the Sandford Road boundary.

Well, is it good? Will it stop you going to Poole for your shopping? Will it seriously damage the excellent Co-Op at Sandford and will it decimate the little McColl's grocery store in Sandford Road which has so far survived in the face of the Co-Op. Will the jobs it creates be fresh jobs and will the 40 recruits be drawn locally from an imaginary pool of retail staff that is already empty – everywhere you go there are signs 'staff wanted'. Will the already overloaded Sandford Road roundabout end up as a permanent traffic jam?

Lidl will get its permission. And open its store. And locals will flock to it regardless of other implications because 'big money' talks and, really, all people care about is money, not collateral damage.

And on the subject of money... while on a drive up to St Neots recently, I caught myself watching the filling station prices to try and save a few pence – then I twigged. It's all psychological! My Tiguan holds 15.3 gallons, nearly 70 litres. Gives me 600 miles. Diesel prices in Purbeck

currently range from 1.97.9 to 1.99.9 a litre. That's a difference of 2p a litre or £1.40 a full tank. In the overall scheme of things, it's just not worth driving out of Purbeck just to save £1.40, is it! So I just fill up when the car asks me to and have to forego the packet of jelly babies!

In last month's *Purbeck Gazette* I commented on an incident in Swanage in which three youngsters were set upon and robbed by a gang of thugs. I passed this report to the office of the Police and Crime Commissioner and received the following response:

"Dorset Police received a report of a robbery involving three male teenage victims that occurred at around 10.15pm on Saturday, 30 April, 2022, in Station Road in Swanage. Items stolen included clothing, cash, Apple AirPods and two mobile phones, one of which was subsequently recovered nearby.

"Officers attended the scene and have subsequently been carrying out a number of enquiries, including a review of all available CCTV footage. Robbery is a serious offence, the investigation is still ongoing and we are exploring all avenues to bring the offenders to justice. We acknowledge the impact this crime would have had on the victims and we routinely refer victims to external support services to help them addressing this.

"This incident was reported to the Force at 10.20pm on Saturday, 30 April, 2022, with information provided that the victims were inside a public venue safeguarded with their



parents and the offenders were believed to have left the scene. With local officers already committed with other incidents graded at the highest risk, further units were dispatched and attended the scene at the earliest opportunity. Through our local policing command areas, we are able to ensure that at the times of highest demand officers from other parts of the county can be redeployed to assist with priority incidents.

"Initial accounts were taken from two of the victims immediately after the incident. We have apologised for the delay in seeing the third victim. We would like to reiterate that this delay did not hamper our investigation into this matter, and we were able to initiate our investigation from the two accounts immediately given and the information shared at the scene.

"Purbeck has a dedicated Neighbourhood Policing Team (NPT) that is supported by response officers from the local policing command area and also now benefits from the support of the Neighbourhood Enforcement Team, which supports the NPT by tackling issues that matter most to local communities and cause the most harm. Our PCSOs are extremely valuable part of our neighbourhood teams and are welcomed and appreciated by lots of communities. They provide a very visible policing presence and are very much involved with our partners in proactively working in communities to tackle anti-social behaviour and other neighbourhood issues. They do not investigate robbery.

"We would encourage

anyone who has information about this incident to please report it to Dorset Police by contacting 101, quoting occurrence number 55220068364."

I make no further comment on this incident other than to let you know when the Police inform me that the culprits have been apprehended and suitably punished. And to say that, sadly, one of the victims was so traumatised he still will not venture from his home unaccompanied.

Sad to hear that the foodbanks are still desperate for stock. The cost-of-living increase bites us all but especially those who find themselves in need of the foodbank, and those who would never have dreamed a year ago they'd need a foodbank now. Right now, it's more important than ever for the more fortunate among us to help out those who are not as fortunate as we are.

And finally. Good news! Cllr Debby Monkhouse tells me Swanage Town Council has received an email stating that the Ambulance Trust expects to fully staff the Swanage-based 24/7 emergency response Ambulance Car 'by September'.

This means that there are five full-time permanent paramedics or advanced ambulance technicians allocated to the Car – the only grades clinically trained to deliver care to serious emergency patients as lone workers. So, well done Debby and your team. But don't scrap the posters. Just yet.

Quote from the past: "When a regime has been in power too long, when it has fatally exhausted the patience of the people and when oblivion finally beckons – I am afraid that across the world you can rely on the leaders of that regime to act solely in the interests of self-preservation and not in the interests of the electorate."

From Boris Johnson

DAVID HOLLISTER

PURBECK COAST
101.2FM

YOUR COMMUNITY RADIO STATION, BROADCASTING FROM THE COMMUNITY FOR THE COMMUNITY AND BY THE COMMUNITY. LISTEN LIVE TO DRIVE HOLIDAYS ONLINE ON SWAN TALK, WEDNESDAYS, FROM 4-6PM

www.purbeckcoast.com text: 07553 236500 01929 424424
hello@purbeckcoast.com PurbeckCoast Purbeck Coast

DURLSTON

COUNTRY PARK & NATIONAL NATURE RESERVE



SUMMER is upon us here at the Country Park! With the hope of a hot sunny month, we love seeing people enjoy Durlston in its Summer glory from picnics in the day to evening strolls at sunset.

An exciting jam-packed month is upon us! Starting off in the Fine Foundation Gallery, we have a fantastic exhibition every day. Until the 7th, 'Into the Woods' continues, then from Wednesday, 10 August, until Tuesday, 30 August, 'Fine Lines' is an exhibition to showcase brilliant collaborative work from two local artists – Debby Kirby and Robin Mackenzie. Items on show will include print, textiles, silk and paper weaving.

Make sure to have a look when next at Durlston, as this



Durlston Castle. PHOTO: stevebelasco.net is an exhibition not to miss!

The start of August will see our Dinosaur trail until Monday 8th, followed from Tuesday 9th by 'Durlston's Underwater World' activity trail! The trail will follow the Clifftop route and will help people to discover the marvellous marine life hidden beneath the waves...

If the activity trail doesn't tire the kids out enough, then make sure to take another visit to our Wild Play Trail running through the woodland. With balance beams, hammocks and more, it will be the perfect way to add to your day.

A great time to see insects, with the meadows alive with the chirping of Field Grasshoppers and Meadow Grasshoppers, as well as the less common Strip-winged and Common Green Grasshoppers.

If you are lucky – or observant – you may well also see the magnificent Great Green Bush-cricket.

In the evenings look out for the magical glowing green lights of the Glow-worm at dusk. The day-flying Six Spot Burnet moth and butterflies

such as Marbled White, Gatekeeper, Small Heath and the brilliant blue Adonis Blue are all on the wing.

August is also the start of the 'autumn' migration, so look out for birds starting to return to their African homes, such as Swifts, and various Warblers while on the downs,

Autumn Gentian is starting to appear, while the first Autumn Lady's Tresses will be in bloom towards the end of the month.

With an events guide which is full to the brim in August, with something for everyone from children's activities, art workshops and the return of our Stargazing evenings, make sure to keep an eye on the website or pick up a copy of the events guide from Durlston.

THE DURLSTON RANGERS




WOOD | MULTIFUEL | GAS | ELECTRIC

FIND OUR SHOWROOMS

13A & 13D
RIVERSIDE PARK
WIMBORNE, BH21 1QU

CONTACT US

01202 888561
WWW.FIREBYDESIGN.CO.UK
INFO@FIREBYDESIGN.CO.UK



National Coastwatch – Eyes along the coast

THINK the title of this month's article has to be 'it could happen to anyone'. I had the misfortune in late June to be towed back ashore after engine failure. Thankfully, the whole incident was monitored by my colleagues at Swanage and St Alban's Head NCI stations.

Our local dive club, the Isle of Purbeck Sub Aqua Club (IPSAC), has been carrying out a project over the last couple of years to investigate some unusual geological features of the Purbeck Coast. We've been working closely with Professor Dan Bosence, from Royal Holloway University, to collect samples from these structures that have become known as the 'Bumps in the Bay'.

On the first dive of this year's project, we were due to work on a site about a mile south of Dancing Ledge. Leaving the Pier just after nine o'clock, we called the Lookout at Peveril Point on the dedicated NCI radio channel, channel 65, to carry out a radio check and to give them our dive plan and expected time of return. It's a routine we've adopted over the last few years.

Doing this not only takes the pressure of Solent Coastguard having to respond to a simple request for a radio check, it also means that someone knows where we are going and what time we will return. With the dive boat's name being slightly unusual, Arawak, the phonetic alphabet was brought into play to ensure the correct information was written down. (Arawak is named after the first life support system that allowed divers to reach depths of 500 metres and was a project the skipper worked on in his youth.)

The sea was relatively calm and we soon reached our dive site. By this time, we could be clearly seen by the St Alban's watchkeepers and we used Channel 65 to inform them of what we were planning and how long we would be on site.



The Swanage National Coastwatch Institution pictured from the sea.

How simple preparation prevented an emergency

Having dropped the first marker buoy in, we waited for the tide to slacken before dropping the second one. Just as we were ready to launch the buoy a warning light came on to indicate an overheating engine. After a quick examination and the refilling of the cooling system, with the spare water we carried, we decided that the safest course of action was to head back to Swanage. A quick radio message was sent to St Alban's to ask them to keep an eye on us as we limped back home.

Very quickly, the temperature gauge soared into the red and we made the decision to shut the engine down. With the equipment we had on board and the weather and sea conditions, combined with the experience of the crew, we decided that a simple call to Solent Coastguard asking for assistance was all that was needed.

Had we had divers in the water, or the sea conditions been worse, our initial

response would have been to issue a 'pan pan'. This informs the Coastguard that an urgent problem exists. We would only have issued a 'mayday' call if Arawak had begun to sink, or we felt our lives were at risk.

We were asked by the Coastguard to change our radio to Channel 67 to keep the emergency channel, channel 16, clear. After checking our details, a call was put out to all vessels to ask for assistance. The checks were made quicker as Arawak had been registered with the RYA SafeTrx scheme.

With the tide flooding and the depth of the water where we were, we decided that it would be safer for us to drift slowly back towards Swanage. After about a quarter of an hour we were contacted by Solent Coastguard to say that a large motor cruiser, Ocean Trader, was making its way from Portland to Studland and could easily give us a tow. The vessel was still some way off and so there was only one thing we could do – break out the tea and biscuits and wait!

Drifting steadily east we

came into view of Peveril Point, once again. A quick channel 65 call to them confirmed they had us under observation.

Rescue vessels seem to be like buses, you wait for one and then two come along at once. Just as Ocean Trader came into view, local angling boat August Mist came along side to see if we wanted a tow, having been monitoring the radio traffic and seen us drifting past Durlston Head, as it was the bigger boat, Ocean Trader soon had a towline aboard and towed us back to our mooring in Swanage Bay.

While this definitely could be classed as an incident, what stopped it becoming an emergency was simple preparation. Arawak had all the safety gear needed, we'd checked the tides and weather, we were familiar with the area and we were aware of what to do when things went wrong.

And the culprit – a fractured cooling pipe hidden within the hull of the boat.

Having both St Alban's Head and Swanage NCI keep us under observation during the whole time was a bonus and helped us feel safer and more relaxed. Thank you to the watchkeepers on duty.

We have two great teams at the stations, and they will be both offering refreshments over the August Bank Holiday weekend. Why not pop along and meet them. You never know, you might end up wanting to join us!

This is Swanage NCI and St Alban's Head NCI, listening on Channel 65. NCI out.

NICK REED

Go on – take a swim in the sea!

It's hot – at the time of writing – around about 30 degrees, and the promise is that the temperature will keep rising.

The sea therefore becomes an infinitely more attractive place than it is in, say January.

I 'swam' in January. It was very unenjoyable and hard to imagine at the moment but for some strange reason I did it anyway. To be fair, it did give off some benefits, mainly centred around the getting warm bit afterwards.

I heard a sports commentator recently talking about having a cold shower every morning. He was asked why he was doing it, as he clearly found it deeply unpleasant.

Well, it's supposed to bring great health benefits. How are you feeling then? No real difference. Hmm. You have to wonder about the logic.

The sea is now a marvellous balm and relief as the temperature outdoors soars higher and higher. The thought of a plunge or two in the sea to relieve the stifling heat is very appealing and attractive.

Yesterday I swam first thing – first thing for me being about 8am – and then again in the evening after a sweaty and humid day.

The morning swim was a mile and a bit in a wetsuit, goggles, swim hat, earplugs etc. It was great to be in the water pretty much on my own without the normally ever-present accompanying sea craft.

These being the gentle splashing of paddle board blades and the occasional less gentle splash of paddle boarders falling in when they get it wrong.

Let's be honest, no-one wants to watch a paddle boarder who can paddle with ease. You want to see a paddle boarder who is just learning and has very low ability levels.

This results in some very amusing tumbles – and who doesn't enjoy seeing people safely come a cropper from the comfort of a beach chair.

The other much less



"Who doesn't enjoy seeing a paddle boarder safely come a cropper from the comfort of a beach chair."

appealing and less watchable modern craft are jet skis. Now, I've tried jet skis and I quite like going quickly on things, but I have to say that after about an hour I felt I'd done jet-skiing.

Sit on or stand. Open it up. Hurtle along for a while and then hurtle back. I think that's pretty much it. I'm sure if there are any jet-skiers who read this they'll be able to put me right, but there you go. A chap's entitled to his opinion.

The second swim was just a 15-minute wallow really and while it didn't get my pulse up, or strengthen any muscles, it was equally enjoyable, although there were a lot more of the aforementioned watercraft. I stayed close to the beach in the heated shallows and it was marvellous.

The water has suddenly cleared up as well. I am no scientist, so I have no idea why this is. You could look it up if you had the urge. What's great is that you can now see some amazing sea life if you're patient.

Swimming in the sea is brilliant. I wrote about it early in the year but, let's be honest, it's more brilliant now.

Swimming in July has most of the benefits of swimming in January, with lots of extra benefits you don't get in

January.

That is, in July you get out of the water and dry off naturally on the beach. Try that in January and you'll be wrapped in a metallic blanket and airlifted to A&E within the hour. If you're lucky.

In July the initial bite of the water as you wade in is a relief. In January you just want to turn around and run back to your car, wack up all the heating and never get out again.

I once introduced a friend from London to surfing on New Year's Day. It was his first time on a surfboard, his first time in a wetsuit and his first time in the sea in all his adult years.

He wasn't a natural but too brave to back out of the alcohol-fuelled bluff of the night before. He confidently

strolled into a medium-sized swell at Highcliffe beach with all the bravado he could muster.

I have a photo of him 20 minutes later. He is dry vomiting on the beach on all fours feeling lucky to be alive. When asked if he was going home for a warm shower or bath his response was that he was never getting wet ever again. It took him half a day to properly warm up.

None of this need concern you at present. It's still hot. Get in the sea as often as you can. The sea temperature is nearly 17 degrees and the air temperature significantly more. You are blessed to live here. Make the most of it – unless you're happier in the Baltic temperatures of the winter. And if you are I salute you.

JOHN GARNER

John Garner Copywriting

- Brochures
- Website and SEO copywriting
- Features and articles
- Press releases
- Blogs
- Email content
- Direct marketing letters
- Newsletters
- Proofreading



johngarnercopywriting.co.uk
johngarnercopywriting@gmail.com
Mobile: 07827 871261
Office: 01929 556245

Puzzles



THE SWANAGE BOOKSHOP

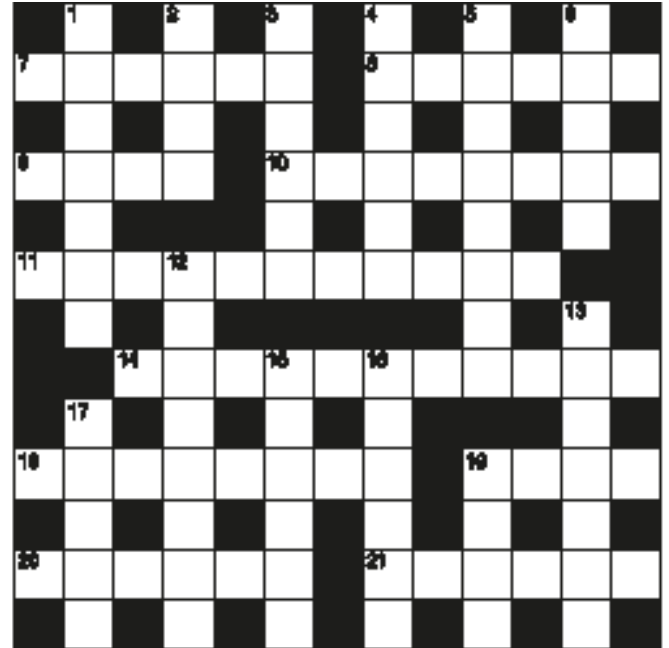
We have a large selection of walking books and maps, new books, shopping lists, notepads and cards and much more!
 35 Station Road Swanage Tel: 01929 424088
 www.edfloom.co.uk



Arrow words

Vivid pictorial impression	Chooses	Computer port (init)	Taking-in	Receipts
Permitted	Luminance unit	Crooned		
		Licence fee recipient (init)		Light knock
Good fortune			Drunkard	
Phone-system number (abbr)		Medical torpor		
Crank	Epistle from Paul (abbr)	Iron, eg	Sales agent	
		Plan		Burden
Tidily kept	Preceding day	Work at steadily	As well	
			Writing fluid	
Emerald or aquamarine, eg	Hard work			
			US intelligence agency (init)	

Crossword



- Across**
- 7 Gaily (5)
 - 8 Feeding (5)
 - 9 Anxious (4)
 - 10 Exercise (5)
 - 11 Visual ticks of balance (1 1)
 - 14 Troop assembly point (5,2,4)
 - 16 Standard procedure (5)
 - 18 Toothed wheel (4)
 - 20 A name formed from a name (5)
 - 21 Colorize (5)

- Down**
- 1 Flew (7)
 - 2 1/4 counterpart (4)
 - 3 Specify (5)
 - 4 Obscurely checker (5)
 - 5 And so on (2,2)
 - 6 Solidify (5)
 - 12 Aggressive (5)
 - 13 Friendly (7)
 - 15 Big-screen venue (5)
 - 19 Donate the thoughts of someone (5)
 - 17 Zing (5)
 - 19 Movable barrier (4)

Wordsearch

Matching First and Last Letters

R	O	A	S	U	G	A	A	R	O	G	N	W	D	N
T	I	W	R	Y	L	R	A	E	Y	N	Y	A	E	A
T	S	D	I	B	A	L	G	N	N	I	H	L	K	Y
H	L	E	R	L	A	R	N	I	I	L	R	L	C	E
E	E	D	I	G	L	D	T	N	C	S	E	O	O	N
R	K	G	I	N	N	O	A	Y	A	O	I	W	D	D
A	A	L	L	S	I	I	W	O	R	G	O	N	U	U
P	U	A	D	I	T	T	R	A	A	A	G	A	D	R
I	Q	I	R	B	N	I	D	E	M	R	N	T	Y	A
S	H	L	A	E	A	T	L	A	M	I	B	T	I	N
T	T	R	D	T	O	U	I	L	T	M	E	A	I	C
R	R	T	A	D	T	O	B	N	E	I	I	T	M	E
A	A	Y	C	R	L	O	O	O	G	D	O	L	W	S
I	E	I	T	D	I	A	U	U	W	C	E	G	G	I
R	N	A	N	C	U	E	D	I	R	G	R	R	T	R

- ABRACADABRA
- CYNIC
- DISTILLED
- DOCKED
- EARTHQUAKE
- ENDURANCE
- GIMMERING
- GLINTING

- GOBLING
- REOCOUR
- THERAPIST
- TINEST
- TYRANT
- WALLOW
- WILLOW
- YEARLY

Sudoku

6							5	8
3		5			1			
			3	8			7	
	4			2		5		
		8	1		9	4		
		9		7			1	
	2			1	6			
			4			1		2
8	5							4

Brain chain

81	-13	x1/3	x8	-18	+46	NEWLY
----	-----	------	----	-----	-----	-------



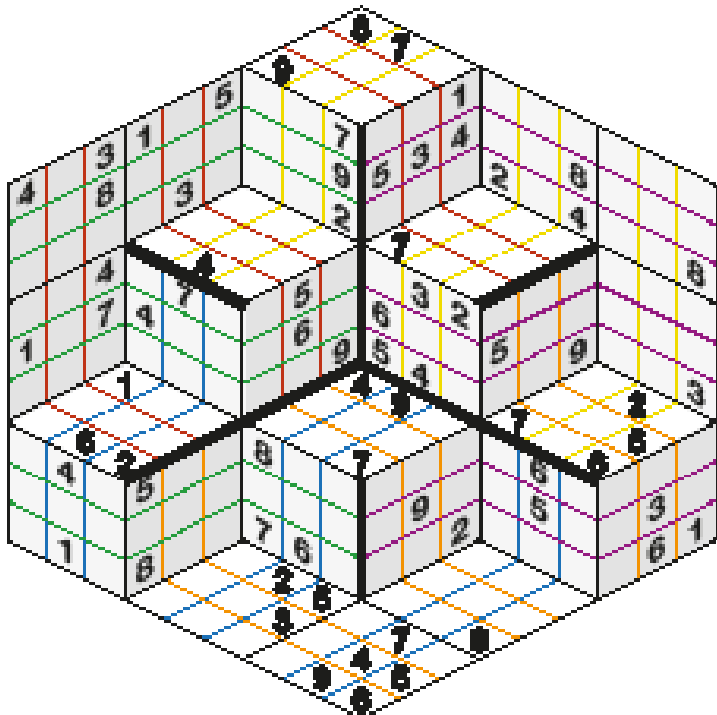
THE SWANAGE BOOKSHOP

We have a large selection of walking books and maps, new books, shopping lists, notelists and cards and much more!
35 Station Road Swanage Tel: 01529 424088
www.editionswe.co.uk



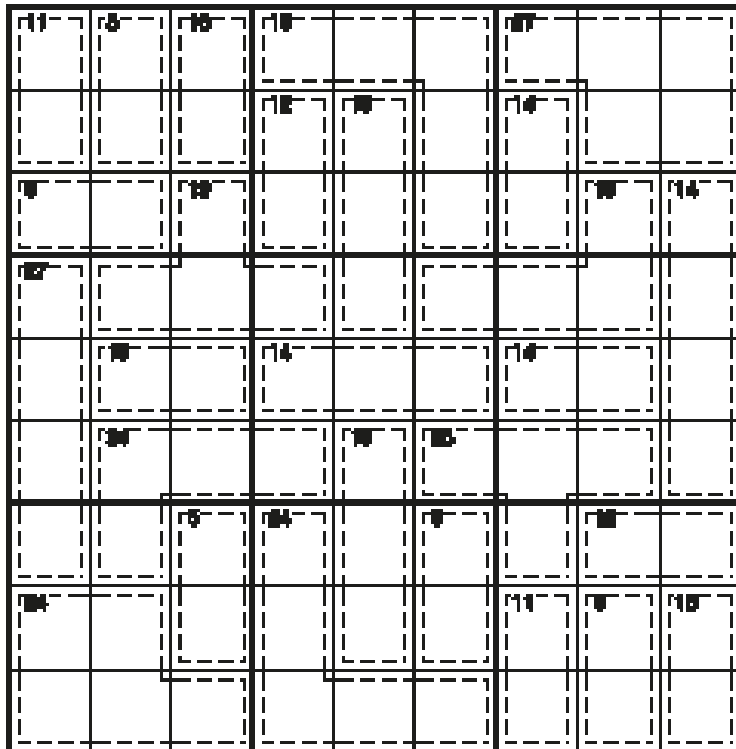
Puzzles

Jumbo sudoku

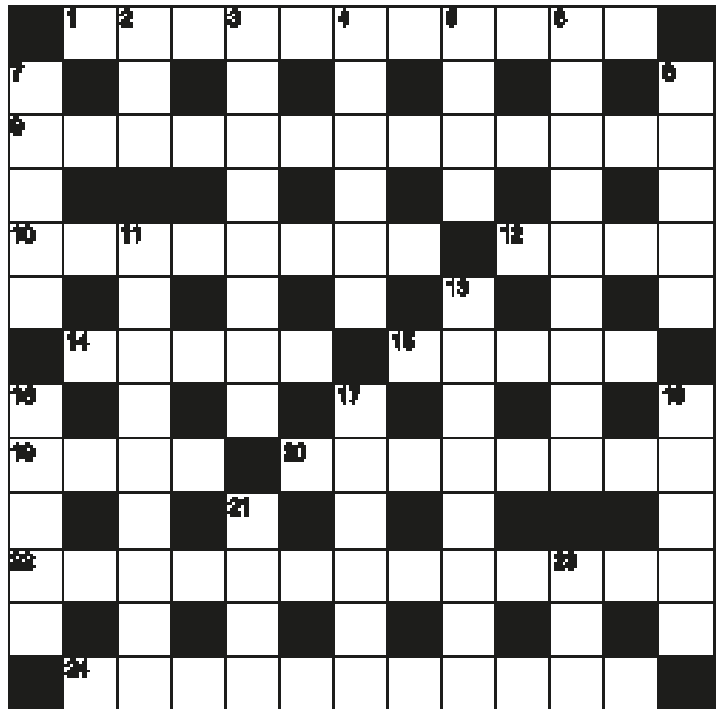


Place 1 to 9 once into every black-bordered 3x3 area as well as each of the 54 rows indicated by the coloured lines. Rows don't cross the thick black lines.

Killer sudoku



Cryptic crossword



Place 1 to 9 once each into every row, column and bold-lined 3x3 box. No digit may be repeated in any dashed-lined cage, and each dash-lined cage must result in the given value when the stated operation is applied between all of the digits in that cage. For subtraction and division operations, start with the highest number in the cage and then subtract or divide by the other numbers in that cage

- Across**
- 1 Hole clothes played in essential for a human body? (11)
 - 8 Leading old line about wild area regarding a landscape's outline? (13)
 - 10 Irish and English writer in pull largely for desert (8)
 - 12 Judge letter by Freudman (4)
 - 14 Son in a confined space is tied (5)
 - 18 Make joyful Greek character with the French on reflection (8)
 - 19 Place offering seaside entertainment, we hear, for tilted signs (4)
 - 20 Bearing a wheeled support for a gun (8)
 - 22 After treatment, chest cooler form of conviction (5,5)
 - 24 Mixed media article about Germany, Australia and Spain is cheap (1,4,1,5)

- Down**
- 2 Hard work in spring (8)
 - 3 Leg with bit of exposure in dressing for wound - and fibrous tissue (8)
 - 4 Box with seed not half thinly sown (8)
 - 5 The chord's containing reascending sound (5)
 - 6 Hero and ear wandering around front of cool band (5)
 - 7 Doctors condition (5)
 - 8 Largely for eagle's first feather (5)
 - 11 Find fault with someone about goal covering hotel (8)
 - 13 Feet's cooked around large company in the open air (2,5)
 - 16 Increased group getting troubled (8)
 - 17 Allegedly elegant foreign car carrying papers (2-2-2)
 - 18 Top character closing play looking slowly (8)
 - 21 Check part of a plant (4)
 - 23 Valuable material in forest (8)

Brain chain (hard version)

72	x1/3	+53	-27	+2	+113	RESULT
-----------	-------------	------------	------------	-----------	-------------	---------------

For the solutions, turn to page 44

Food & Drink

Ditch the cooking and make time for summer with cool salads

by Lorraine Gibson

FORGET slaving over a hot stove in warm weather – create these quick, easy salads to save time and stay cool.

Lobster and salad onion noodles

Preparation time: 20 minutes plus overnight defrosting

Cooking time: Ten minutes

Serves: 2

Ingredients

2 Big and Juicy Whole Cooked Canadian Lobsters
1 tbsp oyster sauce
1 tbsp reduced salt soy sauce
1/2 tsp toasted sesame oil
1/2 tsp maple syrup
2 tbsp sunflower oil
2 cloves garlic, finely chopped
1/2 Chinese leaf lettuce, roughly cut into 3cm chunks
Bunch salad onions (about 8), trimmed and cut into 4cm lengths
15g fresh root ginger, peeled and cut into matchsticks
1 red chilli, sliced
1 1/2 tbsp Shaoxing rice wine
275g pack ready-to-eat egg noodles

Method

1 Prepare the lobster according to pack instructions, defrosting overnight in the fridge and then removing the meat from the shell. Roughly chop the tail and any other meat but keep the claw meat intact. Mix the oyster and soy sauces, sesame oil, maple syrup and 1 tbsp water with a good grind of black pepper; set aside.
2 Heat 1 tbsp oil over a high heat in a wok. When smoking, add the garlic and Chinese leaf lettuce and fry for 1 minute until softened; tip on to a plate and set aside. Heat the remaining 1 tbsp oil in the pan and fry the salad onions, ginger and chilli for 1 minute until just golden. Add the lobster and fry for another 30 seconds, then stir in the Shaoxing rice wine and stir-fry for 30 seconds.
3 Tip in the oyster sauce mixture, then the Chinese leaf lettuce and the noodles and toss over the heat for a final minute until piping hot. Divide



Grilled miso mushroom and grain salad.

between plates and serve immediately

Grilled miso mushroom and grain salad

Prep: 20 minutes Cooking time: Ten minutes

Serves: 2

Ingredients

2 tbsp spread
1 1/2 tbsp white miso paste
2 tsp clear honey
2 cloves garlic, crushed
4 large portabella mushrooms, cleaned and any thicker stalks trimmed
1 tsp toasted sesame oil
1 tsp rice vinegar
1 small leek, finely sliced
250g pouch ready-cooked spelt, quinoa, red rice and wild rice
1 tsp sesame seeds
1 carrot, peeled and julienned or coarsely grated
100g radishes, finely sliced
1 small avocado, chopped

Method

1. Preheat the grill to high. In a small bowl, mix 1 tbsp spread

with 1/2 tbsp miso paste, 1 tsp honey and the garlic. Arrange the mushrooms on a foil-lined tray and brush all over with the mixture; season and set aside. Mix the remaining 1 tbsp miso paste, 1 tsp honey, sesame oil, rice vinegar and 1 tsp water to make a dressing; set aside.
2. Heat the remaining 1 tbsp spread in a saucepan and gently fry the leek with a pinch of salt for 5-6 minutes until soft. Add the grain mix and cook for 1 minute. Tip into a bowl and set aside. Toast the sesame seeds in a dry pan for a few moments till golden, then tip into a bowl and set aside.
3. Meanwhile, grill the mushrooms for 4 minutes on each side until golden and cooked through. Toss the grains with the carrot, radishes and avocado and divide between plates. Top with the mushrooms (spooning over any juices), then spoon over the dressing and scatter with sesame seeds to serve.

Chicken salad with green goddess dressing

Prep: 20 minutes Cooking time: 15 minutes

Serves: 2

Ingredients

7 tbsp FAGE Total 2% Fat Greek Yoghurt
1 lime, juice
2 cloves garlic, crushed
2 British chicken breasts (about 300g)
12 basil leaves
3 tarragon sprigs, leaves only
2 anchovies
1/2 head broccoli (about 160g), cut into small florets
1 head cos lettuce, roughly chopped
1 small avocado, sliced
1/2 pot salad cress, snipped

Method

1. In a bowl, mix 2 tbsp yogurt, the juice of 1/2 lime and 1 1/2 crushed garlic; season. Put the chicken breasts between 2 sheets of baking parchment and use a rolling pin to bash out to an even thickness of about 1cm. Put in the bowl with the yogurt marinade and set aside for 15 minutes (or chill for up to an hour).
2. Put the remaining 5 tbsp yogurt, juice of 1/2 lime and 1/2 crushed garlic clove in a small blender or food processor with the herbs and anchovies; whizz with a grind of black pepper until smooth. Meanwhile, bring a large saucepan of water to the boil and simmer the broccoli for 2 minutes, then drain and set aside.
3. Heat a griddle or frying pan over a high heat. Lift the chicken breasts out of the marinade (discard any excess) and cook for 5 minutes on each side, until cooked through, the juices run clear and there is no pink meat remaining. Arrange the lettuce, avocado and broccoli on plates. Slice the chicken and arrange on top. Spoon over the dressing and scatter with the salad cress.
■ Recipes and photos from Waitrose – for thousands more recipes, visit www.waitrose.com/recipes

Everything is coming up roses!

By Sue Butterworth
Plant manager at Goulds
Garden Centre

THE sun is blazing and my favourite rose, Boscobel, is in full bloom as I write. A timely reminder that August is watering month and essential care for your roses now will reward you with beautiful displays in the future.

Roses are tolerant, versatile plants, which thrive in direct sun. Most love four to five hours of sunshine each day and a heavy, well-drained soil.

A good, weekly watering will generally keep your roses sufficiently hydrated during the summer. Direct five litres onto the roots of shrubs and patio plants, and ten litres onto all other types of rose, allowing ample time for the water to puddle and drain into the soil before adding more. It is best to avoid any water splatter on the leaves or flowers. Soaked foliage encourages disease.

Of course, all plants are different and a close look for early signs of wilt, especially in extreme heat, will indicate more water is required.

While some may prefer an automatic watering system, I prefer to water by hand with a soft spray attachment. It gives me the perfect opportunity to take a good look at each rose and identify any signs of insect damage, fungus or disease. Early detection is key to success! I also remove any leaves with black spot and ensure they are disposed of



Sue Butterworth.

away from the compost bin, and take note of the dead heads to remove later, to encourage more blooms.

These beautiful plants are very hungry, and feeding is so important. In addition to the spring top dress, a jolly good mulch is a must. You can use well-rotted garden compost or manure – at least two years old – which will retain moisture and boost the nutrients for a strong plant.

A strong, healthy leaf is tough and a great barrier against aphid munching!

On the subject of aphids, have you noticed higher infestations when feeding with a high nitrogen fertiliser? These little pests are attracted to nitrogen-rich new growth, not least because high nitrogen equals lower sugar levels in the plant sap. This is an attractive formula for aphids, who find high sugar toxic and excrete it as sticky honeydew.



David Austin Boscobel rose. PHOTO: Goulds Garden Centre.

Using a preferably organic slow-release fertiliser, and avoiding a high-nitrogen type, will, it is hoped, encourage them to find a meal elsewhere!

Incidentally, if you have had the privilege to see the leaf-cutting bee in action, don't mistake it for a foe in the garden. These friendly, solitary female bees cut pieces of rose leaf for their nests. As they are not eating the leaf, they cause no serious harm. They are fascinating to watch and are the perfect pollinator. You are likely to spot them active in your garden from spring to late summer.

Now is the time to pre-order your roses for the first delivery in late September/October. David Austin roses, a favourite of ours, normally arrive later in November. And those which do not like to be lifted at this time of year, will not be available until spring.

Finally, roses make the

perfect, symbolic present. Their colour, name, even shape, all reflect special meanings. If you have a special celebration coming up for a family member or friend, please pop in and see one of our team in the garden centre at Goulds – we can guide you through the choices and place your plant on order.

It's been lovely to showcase my thoughts with you on the subject of roses. I am looking forward to next month's topic.

SUE BUTTERWORTH
GouldsGC.co.uk

Sue Butterworth is in her 24th year at Goulds Garden Centre. She is the plant manager for this busy store and has been sourcing plants for award-winning gardens at the Chelsea Flower Show since 2018. She is an avid gardener, leading to numerous Britain in Bloom awards, including a first.

Rudge's

FOR ALL THAT YOUR GARDEN NEEDS

Unit 1A, Victoria Avenue
Industrial Estate,
Swanage, BH19 1BJ

01929 290619
rudgegc@gmail.com



SWANAGE'S VERY OWN DEDICATED GARDEN CENTRE

PROVIDING A WIDE RANGE OF:

- Compost and soil
- Bedding, perennials, shrubs and more
- Gardening tools and accessories

Telephone orders & home delivery available

FOR ALL THAT YOUR GARDEN NEEDS

Health & Wellbeing

Your Health Matters

Dorset HealthCare's monthly round-up

Drop-in dementia awareness events

ARE you personally affected by dementia? Feel you have memory difficulties? Or simply would like more information on dementia – then come along to one of the community-based events being held across Dorset.

People living with dementia, carers, family members or anyone worried about their memory are all invited to attend.

The free drop-in events will provide information on services available locally, with representatives on hand from charity Help & Care, our Trust's Memory Assessment Service, NHS Dorset and



AgeUK. Smaller, community-based support groups will also be in attendance.

The aim of the events is for local people to be aware of what is available in their

community – where they can feel involved, understood and get the help they need.

Dementia is not only about memory loss, but it can also affect the way people think, remember, feel and behave as well. If you, or someone you care for is experiencing changes in their memory or thinking and it's impacting their life, and you want to know more about the services available to help with diagnosis, support and treatment locally to you, please come along to one of the roadshow events.

If you are unable to attend



Dorset HealthCare University
NHS Foundation Trust

one of the events near you, please visit your GP to discuss whether or not a referral is needed to our Memory Assessment Service. The Trust has a comprehensive range of services for people who may be diagnosed with dementia.

A full list of event locations, dates and times can be found by visiting <https://www.helpandcare.org.uk/services/dementia-coordinator-service/> or for more information, email a.sedmanhobson@helpandcare.org.uk or stacey.hill@helpandcare.org.uk

Further details on the dementia services available can be found at www.dorsethealthcare.nhs.uk/dementia

JOOD GIBBINS
Dorset HealthCare's
Memory Assessment
Service Lead

CHIROPODY

Rachel Ciantar

Registered with The College Podiatry & HPCP

Home Visits & Clinic Appointments

Comprehensive foot care
Diabetic Patient Care

2 Daisy May Arcade, King's Road East, Swanage
Contact 07979 840542



To advertise your business in our health section

call

Donna Garner



07714
289411

ARE YOU SUFFERING FROM PAIN OR DISCOMFORT?

We can help to heal your:

Back & neck pain..Sciatica..Tension..Headaches..Arthritic pain
Frozen Shoulder..Sports Injuries..Muscle Strains..Repetitive Strains
Poor Posture & much more

Practices based in Swanage & Wareham



01929
766008



www.purbeck-osteopathy.co.uk



01929 481429
07967 096742

www.dorsetneurophysio.co.uk

Specialist Physiotherapy in Neurology and Rehabilitation

- * Stroke
- * Parkinson's
- * Balance problems
- * Multiple sclerosis
- * Muscular dystrophy
- * Dizziness
- * Head injury
- * Spinal cord injury
- * Mobility problems

Home Visits and Clinic Appointments
Swanage Therapy Centre and Corfe Castle

Please contact Holly Sizer, Chartered Physiotherapist
holly@dorsetneurophysio.co.uk



WAREHAM PHYSIOTHERAPY

HELEN GORDON, MCSP. HCPC registered

Effective treatment from experienced chartered physiotherapists for spinal, limb, joint & muscle pain, sciatica, arthritic pain, whiplash, sports injuries & postural problems



Contact: 07765 129786

www.warehamphysiotherapy.co.uk



It's all about the nuggets

By Alice Johnsen

IT was towards the end of a coaching session earlier this week that we started talking about the nuggets. The nuggets are the bits in your life that add depth or quality. Not the once-a-year treats or the big family wedding. Nuggets are the stuff of everyday. The rose blooming. The interesting conversation. The gripping book in the bath. The small success at work. Those are the nuggets.

Such things add value to our lives. It's tempting to think the game-changers in our lives are those dreamy holidays or moving to that bigger house. Or anything one-off. But I don't think they carry nearly as much value as the nuggets. Yes, they have their place but they are not the regular boosters. They are not really what makes us happy. To be happy long-term re-quires an acceptance and liking of our basic lives, of the people we spend most of our time with and our everyday activities. Which is, of course, not as simple as all that.

If you don't feel you are contented with your life, adding a few nuggets is going to make a really big difference. Noticing the small things, adding a few small changes to your life – that's what makes the difference. For example, making it a regular thing to read that book in the bath or take your dog/child/friend for that favourite bike ride. Placing value on such things means



There's no denying the benefits of exercise outdoors – and it's easier to do at this time of year.

PHOTO: Sasin Tipchai/ Pixabay

they stand a chance of not being kicked off the agenda by seemingly more important tasks. It's not always easy but it is always valuable.

In another coaching session my client and I were remembering the value of exercise out-side. Again, not always easy unless your day job is outside based, but easier at this time of year than in the depths of winter. But there's no denying the immediate and long-term benefits of a blast of fresh air or a dose of sunshine.

One last thought to offer. No-one else is going to create nuggets for you. No-one else is going to create the opportunity for you to down

tools and enjoy that nugget-filled moment. That is entirely and absolutely up to each and every one of us to

do it for ourselves.

Alice Johnsen is a life coach (07961 080513; alicejohnsen.co.uk)

VIP stockists of YOUR Purbeck Gazette!

Lytchett & Upton Council, Lytchett Minster
The Courtyard Craft Centre, Lytchett Minster
The Baker's Arm Pub, Dorchester Road
The Clay Pipe Inn, Organford Rd
Crossways Post Office, Crossways
The Spar Shop, Puddletown
The Post Office, Winfrith
Mace Stores, Bere Regis
Bartletts Store, Bere Regis
Holme Nurseries, East Holme
Co-op Food & Petrol Station, Sandford
Horseys Newsagents, Wareham
Premier Stores, Carey, Wareham
Purbeck Mobility, Wareham
The Hidden Deli, Wool
Gillett's Spar Shop, Wool
The Lookout Stores, Stoborough
Stoborough Garage, Stoborough
Foleys Garage, Harmans Cross
St Michael's Garage, Harmans Cross
Swanage Tourist Information Centre
Swanage News Newsagents, Swanage
McColls Newsagents, Swanage
Jenkins Newsagents, Swanage
Arkwrights Stores, Swanage
Ballard Stores, North Swanage
Costcutters, Herston, Swanage
Richardson's Budgens, Swanage
Triangle Garage, Swanage
Durlston Castle/Seventhwave Restaurant, Durlston, Swanage
The Scott Arms pub, Kingston
Corfe Castle Village Stores, Corfe Castle
Langton Village Stores & Post Office, Langton
Studland Stores, Studland
THANK YOU TO OUR AMAZING STOCKISTS - SUPPORT LOCAL!



Key to Hearing™

t: 01202 511386

w: www.keytohearing.co.uk



Keeley Salmon RHAO

Home visit hearing aid service. Get help with your hearing. Call us or visit our website to learn more.

WHY CHOOSE T&M GLASS FOR YOUR HOME IMPROVEMENTS?

To celebrate our new showroom opening order in August and we will pay your VAT



Windows • Doors • Conservatories • Orangeries
House Extensions • Garden Offices • Glass Rooms
All come with a 10 year Guarantee



120 Wimborne Road Wimborne
Dorset BH21 2DT (Next to Jewsons)

01202 849619

www.tandmglass.com



Save money with fuel-saving tips

THE chief executive of car leasing comparison site *LeaseLoco.com*, John Wilmot, has provided his top fuel-saving tips for motorists.

“With hikes in the cost of a litre of fuel, millions of UK families are feeling it in the pocket. Most of us can’t do without a car, so it’s worth looking at how we can adapt our driving, and how often we drive, to squeeze as much value as possible from that litre of fuel.”

■ **Accelerate smoothly.** Slow and steady will conserve fuel. Driving erratically or aggressively can consume more than 50 per cent more fuel. Avoid tail-gating with sharp braking. If possible, try to drive at a constant speed and in the highest gear.

■ **Keep rolling.** Stopping and starting again will use more fuel than rolling. If you’re approaching traffic lights or a queue, then slow early and you

might not need to stop completely.

■ **Remove unnecessary weight.** The heavier your car the more fuel it needs to move around. Clear out all the unnecessary junk in the boot. The lighter your car, the more efficient it will be.

■ **Check tyre pressure.** Lower tyre pressure will drain your tank because you’ll need more fuel to move it down the road. Check your tyre pressure as soon as possible to see if it’s too low and then do regular checks every two weeks to keep those tyres pumped up.

■ **Change up gear earlier.** Try not to labour the engine. Changing up at an engine speed of about 2,000rpm in a diesel car, or about 2,500rpm in a petrol car, can make a real difference. Newer car models have now been fitted with a gear shift indicator which help to change gear more efficiently.

■ **Turn off electrics.** Turn off

your rear window heater, demister fan and headlights when you don’t need them.

■ **Take off the roof box.** If you have a roof rack or roof box, it’s worth removing it, particularly if you aren’t planning to use it for a while. Roof racks and boxes create wind resistance, and the drag effect will result in your car using more fuel.

■ **Keep windows shut.** Open windows aren’t great for fuel efficiency. Try to keep the windows shut, particularly when driving at faster speeds

out of towns or on motorways. Open windows increase drag, slowing the car down and increasing the amount of fuel it needs to operate efficiently.

■ **Combine trips.** A cold engine uses much more fuel during the first five miles. Think about combining daily errands into one big trip to maximise fuel usage. This may not be possible during the week if you use your car for work, or to drop the children off at school. But certainly at the weekend, try to avoid short trips.

Greystone Garage
 ● SERVICING & REPAIRS
 ● MOT'S CLASS 4
 ● TYRES
TEL: 01929 427775
WWW.GREYSTONEGARAGE.COM

TEST CENTRE

TREAT YOURSELF

New Cars
The Latest Range from Ford

Used Cars
Great Value Used Cars

Service & Parts

Motability

ST MICHAELS GARAGE
 THE PURBECK FORD CENTRE
 Valley Road, Swanage
 Phone 01929 480221
www.stmichaelsgarageswanage.co.uk

foleys
 Vauxhall & German Automotive Specialists
 Valley Road, Swanage, BH19 3DZ (Harman's Cross)
 Tel: 01929 480215. Email: info@foleysgarage.co.uk

2017 (07) FORD FIESTA 1.6 ECONORACT ZETEC 3 Dr In Blue, 6 Speed Manual, Ford Sync 3 DAB Radio, Apple CarPlay, Android Auto, Bluetooth, Lane Assist, Auto Headlights, Heated Fr Screen, Air Con, 1 Owner, 25,000 Miles.....£11,295

2018 (10) KIA CEEB 1.4T CRDI 5 Dr In Red, 7" Touchscreen Sat Nav, Bluetooth, Cruise Control, Alloys, Rear Parking Sensors and Camera, Apple CarPlay/Android Auto, Radio/CD Player, Auto Headlights, Air Con, Electric Windows, Electric Heated and Folding Mirrors, BT-Link Cycle Pack, Great Economy and Performance, 8,200 Miles with FSH.....£10,999

2016 (16) CITROEN C1 PURETECH FLAIR 1.2 3 Dr In White/Green, 7" Touchscreen, Bluetooth Phone Prep, Reversing Camera, DAB Radio, USB Port, Electric Windows, Electric Mirrors, Alloys, FSH, 27800 Miles and £0 Road Fund Licence.....£6995

2013 (63) HYUNDAI I20 ACTIVE 1.2 5 Dr In White Bluetooth Connectivity, Radio/CD Player, Air Con, Electric Heated and Folding Mirrors, Alloys, £30 a year Road Fund Licence, 1 Owner with FSH, Only 41000 Miles.....£6595

2018 (68) CITROEN C3 AIRCROSS 1.2 PURETECH 110 FLAIR In Silver 6 Speed Manual, 7" Touch Screen, Sat Nav, Cruise Control with Speed Limiter, Apple CarPlay, Android Auto, Bluetooth, Electric Heated and Folding Mirrors, Electric Windows, Rear Parking Sensors, Alloys, Only 7800 Miles.....£14,795

QUALITY USED CARS BOUGHT & SOLD - SERVICE - REPAIRS - MOTs

Not got what you're looking for? Then give us a call as we have access to 100s a late low mileage cars of all makes and models

Politics

Dorset wages, London prices

DORSET is a beautiful county. Hundreds of thousands of visitors every year treasure memories of our beaches, chalk hills and picturesque villages. Some 13.7 million day trips were made to the county in 2020.

The county's beauty has been justly celebrated by many authors, not least by Thomas Hardy.

But there is a hidden Dorset, one disfigured by deep inequalities and deprivation. Poverty and prosperity are found cheek by jowl here – as noted by Professor Danny Dorling, Mackinder Professor of Geography at Oxford University, in a keynote speech at the Weymouth and Portland Action on Wages Conference in 2018.

Social mobility – the opportunity to progress in life – is lower in South Dorset than in any of the other 532 English constituencies.

The average yearly wage in Purbeck is £25,000, while the multiple for buying a house is 12 to one, compared to eight to one nationally.

Housing costs are rising year by year – in 2020, Purbeck rents increased at the highest rate in the country. Moreover, Purbeck attracts people from outside the area wanting to buy second homes. About one in five properties in Swanage are second homes or holiday lets.

Purbeck – and the county as a whole – faces a cost of living crisis. Wages for too many of its residents are far too low, and costs of living far too high.

It is no wonder that researchers at Exeter University said recently that young people in our county 'face a double bind of poor mobility prospects and a poor earnings outlook'.

Purbeck's schools – many of them underfunded – work hard to support youngsters living in poverty. Swanage Primary School is a shining example of a local school which goes the extra mile to help its pupils make the most of their talents and potential.

Nearly 8,000 Dorset children under 16 were living in poverty in 2019-20 according to Department of Work and Pensions data – 77 per cent of them living in working households.

In parts of Swanage, figures in the House of Commons Library show that 18.5 per cent of children under 16 live in absolute poverty. Sadly, there are many other pockets of deprivation in our beautiful county.

Swanage Labour Party last year championed the case of new Swanage resident Abigail Parker, who lost her job as a

result of the Pandemic, and then her home as a result of a devastating fire.

Abigail had to fight a legal battle with both Dorset Council and the Department of Work and Pensions to be housed and to receive Universal Credit. Her story was featured on local radio and television.

Abigail's story is one typical of our times. Circumstances may change, through no fault of our own, and we may lose all we took for granted.

With inflation now running at 9.1 per cent, and predicted to reach 11 per cent by the end of the year, we all need to ask of the Government what 'levelling up' really means, and what will be done to make this a reality where we live.

CHRIS BRADEY
Chairman, Swanage and Rural Purbeck Labour Party



Chris Bradey



Duke's
AUCTIONS | VALUATIONS | COLLECTIONS
For confidential advice and a free appraisal please contact us
A 1956 Land Rover Series I consigned for the 'Icons of Motoring' Auction

UPCOMING AUCTION HIGHLIGHTS
Auctions commence at 10.30am

August	15th	Interiors (postgraduate until 11.00am)
September	19th	The Auctioneers Auction
	28th	Art & Design part 1800 (with postgraduate until 10.00am)
October	6th	Icons of Motoring – A Land Rover Auction (postgraduate until 10.30am)
November	18th	Antique Art (postgraduate until 10.30am)

Find more information on all auctions on our website

Duke's
Barney Spence
Dorchester
Based IPTA

VIEW | BID | BUY ONLINE
Tel: 01305 265080
enquiries@dukes-auctions.com
www.dukes-auctions.com

Advertiser's announcement

DUKE'S of Dorchester is excited to announce a first of its kind 'Icons of Motoring' all Land Rover Auction.

It is being held at The Tank Museum, Bovington, on 6 October.

The auction is a culmination of a charity mission involving seven iconic series I, II and III Land Rovers being driven from Chartwell in South Africa to Chartwell in the UK, a total distance of about 22,000km.

Funds are being raised to develop sustainable opportunities

for the next generation, focused specifically on food and water management techniques.

Duke's Auctioneers is recognised as one of the top regional auction houses and its auction results reflect this, from fine art to vintage vehicles.

If you own Land Rover vehicles or automobilia, Duke's is inviting entries for this inaugural auction.

For more information and confidential free advice please contact Julian Smith or William Batt on 01305 265080 or email enquiries@dukes-auctions.com



The Chartwell to Chartwell Mission began on 13 July and will culminate with Duke's 'Icons of Motoring – The Land Rover Auction' on 6 October.

How the whips' office works

THEY say a week is a long time in politics. It is as true now as ever! As I write, the Prime Minister has just resigned as leader of the Conservative Party, and we will be choosing a new leader. I am quite sure that what I am writing now will already be historic by the time you read it. There is no doubt that a great many books will be written about this time in politics, all providing their view on what has gone well, and what could have been better.

Hundreds of constituents have shared their views with me about the Prime Minister, both in favour of him and against him – and both for and against him staying on as PM.

As we are a Parliamentary democracy, rather than a Presidential style of government, we do not directly elect our Prime Minister. Instead, the Queen appoints the person who is the leader of the party which has won the

most votes in an election.

Several of my colleagues are putting themselves forward for the leadership. There will be an initial series of votes by Conservative MPs, before a ballot of Conservative members. By the autumn, and probably well before, we will have a new leader and a new Prime Minister.

I remain a member of the Government in the whips' office, albeit in a new role. A significant part of my duties as a whip is administrative, for example ensuring that there are ministers for debates and committees, and liaising with MPs from all the other parties.

It is also a pastoral role, providing support and advice to other MPs – our 'flock' – and also provide a line of communication from the backbenches to the Chief Whip and Prime Minister, about how

MPs are feeling and any concerns or policy issues.

Through these turbulent weeks, this continued support to my 'flock' has been as important as ever. It is also right that the Government must continue to function. In order for legislation to be properly scrutinised, debate must be facilitated, and committees must continue to operate. Whips are a vital part of that process.

As a member of the whips' office, I have to remain neutral throughout the leadership race and I will not be promoting or publicly supporting any of the candidates.

This means the whips office will continue delivering Government business throughout this period to ensure the smooth running of parliament and government. I very much hope to update you

in my next column about how things have progressed, and my new role in the whips' office.

By the time you read this, it is likely there will only be two remaining candidates, with the winner to be announced in a matter of weeks. I will be spending much of the summer in Dorset and so please do stop me for a chat when you see me out and about.

If you need to get in touch, you can contact me via email michael.tomlinson.mp@parliament.uk or call my office on 01202 624216.

I send out a regular email update – you can sign up on my website www.michaeltomlinson.org.uk where you can also find links to what I've been doing locally and in Parliament, and information such as updates and energy price advice.

MICHAEL TOMLINSON
MP for Mid Dorset and North Poole



Michael Tomlinson

Measures to help with cost of living

DORSET has many positive qualities and features, one of which is being among the warmest counties in the UK. At this time of year, most households will use the least energy for heating yet will be acutely aware that what energy they do use, for most is costing significantly more than this time last year.

I was on a fixed tariff for gas which expired at the end of March and renewed for another year at significantly higher rates.

As an exercise in what is to come, I took my gas usage for the first three months of 2022 – central heating, hot water and cooking hob – and worked out what it would have cost at the new tariff.

The increase was staggering – £338 more, equating to a 250 per cent increase in gas alone with the electricity bill seeing around a 100 per cent increase.

The recent rises in

domestic fuel costs – with more on the horizon for probably at least another year, if not longer – combined with record high prices for petrol and diesel, freezes to income tax thresholds, increased National Insurance contributions and inflation at levels not seen for a generation, mean most of us are significantly worse off than we have been for a very long time with no obvious relief on the horizon.

Some measures have been announced but they don't go anywhere far enough.

Dorset is a predominately rural county and many households don't have the benefit of mains gas, relying on fuel oil or LPG, neither of which are subject to Ofgem caps, and have therefore seen astronomical price increases.

Yet the Government will be paying the £400 energy bill support grant to second homes and holiday rentals when there are families having to make the choice between heating their homes or eating.

And with next to no rural bus services, rural communities use more fuel to drive. Who'd have thought last year that filling up your car would now cost over £100? With Dorset having a predominantly low-wage economy, the reality for many is that they must work a couple of hours to pay back the cost of their commute.

The Lib Dems are keeping the pressure up on the Government and calling for more measures to help local people during this difficult time.

These include;

- Cutting the rate of VAT from 20 per cent to 17.5 per cent – which would save people an average of £600 a year.

- Scrapping the Conservative's National Insurance tax hike which will cost people hundreds of pounds this year.

- Increase the Income Tax threshold in line with inflation meaning millions of people will pay less tax.

- Re-instate the Pension Triple Lock immediately, rather than wait until next April, to save pensioners an average of £299 over the next year.

NICK IRELAND
On behalf of South Dorset Lib Dems

Nick Ireland is parliamentary spokesperson for South Dorset Lib Dems and leader of the Lib Dem group on Dorset Council



Nick Ireland

Letters

Shortage of homes for local people

DAVID Hollister (Purbeck Gazette, July) is right about the lack of accommodation for local people in Purbeck.

I was appalled to learn that the site of the school, St Mary's, in Manor Road, which our children and grandchildren attended, has had the second home clause removed.

We had always assumed that once that clause was in it could not be challenged and that these much-needed homes would be provided.

I'm sure we all know of local families where the young people can neither afford the rent nor mortgage of a home to stay here.

I certainly know of a 27-year-old fisherman who still has to live with his parents, and there are others.

Worth Matravers is a perfect example of where holiday homes almost, maybe not even 'almost', outnumber residents' homes.

I can see that holiday homes generate some income in the locality, and why shouldn't people who live in a free, democratic country, who can afford to buy a holiday home be allowed to do so? But the balance is seriously wrong.

As Mr Hollister says, when the Old Malthouse school closed we were assured that a clause existed that the site would always, with 'its lovely old building and playing fields', be devoted to education facilities. That certainly hasn't happened.

Essentially the problem is that over the years successive central governments have deprived local authorities of the funds to do what they were set up to do, and as a consequence of desperately looking for funding to keep the show on the road many decisions have been arrived at which benefit a select few and certainly not the community at large.



Carey Hall's for all

THE committee of Carey Hall (above) in Wareham would like to grow the use of the hall.

According to the musicians of Wareham Folk Harvest – scheduled for Saturday, 17 September – the acoustics are good.

The hall has parking and small kitchen facilities.

Booking information is at careyhall.co.uk

The committee invites everyone, especially Carey residents, to the annual meeting on Thursday, 18 August, at 7.30pm, in the hall at Mistover Road BH20 4BY. For more information phone 558139 or email jbrad@uwclub.net

Julie Bradshaw

Secretary,

Carey Hut Charitable Trust committee

Michael H C Baker
Via email

Walk spoilt by foul smell of sewage

WALKING my dog in and around Swanage is what I do – outside of work. It is the

sights and sounds of this incredibly scenic and friendly seaside town which brings so much fulfilment and joy to my life.

The sights are well documented and rightly so, the sounds often taken for granted but waves crashing,



Dodo at the beach

WHILE I was at Shell Bay beach in the sand dunes I came across this red-crested dodo bird.

I think this one is a native species to Dorset. I was so taken back on seeing it I had to go over to have a lay down in the hammock with a drink.



Tom Scrase
Via email

birds singing, steam trains puffing and the buzz of locals and grockles alike are heard and appreciated.

The smells of the sea, fresh coffee and even the controversial coal dust are local smells I catch every morning but there is another smell that is present, all too often wafting through the sports fields and down Victoria Avenue. It hangs in the air and permeates clothing, it hits me in the face as I gaze lovingly across the bay from the clock pier and fills my lungs with every breath I take walking out to Pevril.

The smell of sewage. Loud and proud and sickeningly bright this morning. I gagged walking across Kings George's. I gagged last week on the pier. I hold my breath and bury my nose in my shirt and at home I imagine I can still smell the cloying overwhelming smell of poo.

Crafting hand-made stone slabs to erect benches with an amazing view of our quaint harbour won't cut it when sitting there with fish and chips, seasoned liberally with salt, vinegar and the odour of poo is the order of the day.

I have stopped swimming in our lovely bay, have you?

These are not memories Swanage wants to create. What is to be done?

D J Meredith
Via email

Disabled club's seafront stalls

SWANAGE Disabled Club is holding sea-front stalls during August – all weather permitting.

There will be handicrafts, new gifts, books, bric-a-brac and many other surprises.

Dates, all 10am-4pm, are: Tuesday, 9 August, from 10am-4pm; Thursday, 18 August; Friday, 26 August; Bank Holiday Monday, 29 August.

Daphne Saville
Honorary secretary,
Swanage Disabled Club

Swanage players at the forefront

THE 1st XI at Swanage Cricket Club have won two of their eight games to stand seventh in Division 1.

The batting highlights have been half-centuries from Antony Mahes, Mike Nash and Mark Stacey (two). Useful contributions on the bowling front have come from Ben Hodder, Steve Kent, Freddie Long and Sid Nash.

The 2nd XI have won six of their eight matches to lie third in Division 4. Batting highlights have been centuries from Sid Nash and Pete Richards, and half-centuries from Simon Goldsack (two), Jon Gregory (two), John Lewis, Harry Long, Tom Rutherford, Tom Wells and Geoff Willcocks.

Outstanding performers with the ball have been Ron Barker, Ross Carroll, Simon Goldsack,

Mike Gould, James Harding and Steve Ramsay.

The 3rd XI have won three of their seven matches. The batting highlights have been half-centuries from David Alcock, Matt Dunster and Tim Ives, with useful contributions from Andrew Hancock.

The bowling highlight was Ethan Stacey's five-wicket haul and Pete Barker, Carroll and Alan Marks' consistent performances, as well as brilliant performances by some of Swanage's youngsters, Dylan Church, Sam Wells and Seb Wright.

The youth teams, from the Under-8s through to the Under-15s have all performed admirably in their respective leagues. The Girls/Ladies Team also performed brilliantly at their latest cricket festival.

Bowls club ladies chalk up successes

SWANAGE Bowls Club's ladies teams are having a great season, lying second in the Bournemouth & District League with trips as far afield as Fordingbridge and New Milton.

They are also in Dorset's June Culpin Cup quarter-finals. June was a popular Dorset bowler, who served on committees for international selections and national championships, and the cup is to honour her contributions to local and national bowling.

The club's team of four in the Ladies County Fours reached the semi-finals, held at Lyme Regis, and members reached the quarter-finals of the Ladies County Triples competition.

The club are also in the National Ladies Top Club area semi-finals, a competition in which each club has a team of four, three, pairs and singles,

with a chance to play in the National Finals in September.

Uta Keats, Jan Cherry, Linda Wallis, Ro Bibby, Connie Palmer and Gill Bryceson were winners and hopes are high for the team.

The club host several friendly matches throughout the season and are looking forward to welcoming Dorset Academy later this year, a team of young players who often beat the club.

Several bowlers live in Cauldron Barn Farm Park and they have decided to challenge other members. This is bound to be a fun-filled afternoon with a barbecue and fully stocked bar.

Anyone interested in joining the club can contact secretary Barrie Tatman on 01929 421162. More information is also available on the club's website, www.swanagebowlingclub.org.uk, and Facebook.

Visit Monkey World this Summer!

See over 260 rescued apes and monkeys, including four groups of chimpanzees, and Europe's official orangutan crèche. Visit the park to support our rescue work, and have a great day out!

10% OFF!
FOR ONLINE BOOKINGS

MONKEY WORLD
APE RESCUE CENTRE

Monkey World - Ape Rescue Centre,
Longthorns, Wareham, Dorset BH20 6HH

01929 462537 www.monkeyworld.org

PLUS!
Kids can take part in the **SUMMER CHALLENGE!**
Check the website to see which challenge is running during your visit

Scan the QR code for promotions and events

Business

Holistic approach to business support

By Andrew Diprose

HEIDI Roper saw a gap in the market for a holistic approach to business support. So the experienced strategic business leader and HR professional set out to close it.

The result is a new brand, NEHD (Non-Execs Hampshire & Dorset), launched in partnership with ViewHR, Dorset Growth Hub, Dorset Council and Plana.

Now 50 local companies have the opportunity to complete the Business Growth Tool online, answering simple questions about company financials, key challenges, vision and goals.

This, in turn, will produce a report with feedback on where the business is now and maps out where it wants to be.

Heidi has assembled The Board Collective – a group of experienced specialists available to work collectively on the business and at no cost. They include specialists in



NEHD founder Heidi Roper and Nick Gregory, operations director at Dorset Growth Hub and NEHD consultant.

all key business areas to support applicants to grow a successful business in the current challenging environment.

The Board Collective is made up of: Heidi Roper (founder) – HR, Strategy, People Management; Amelia Hooley – Strategy, Growth, Wellbeing; Anthony Story – Innovation, Growth, Digital; Caron Khan – Strategy, Transformation, Marketing; Dorothy Brown – Finance,

Insolvency Practitioner; Dawn Leader – Finance, International Trade, Growth; Jacqui Rock – Marketing, Branding, Strategy; Miranda Morgan – Growth, Strategy; Nicki Cluley – Marketing, Public Relations, Strategy; Nick Gregory – Finance, Growth, Management; Richard Burn – Marketing, Strategy, Digital Transformation; Robin Watson – Employment Law, HR; Steph Sanderson – Change

NEHD

Management, Strategy, Operations.

An initial 15 companies will gain access to the above experts, effectively a mini-Board to guide a business in the right direction.

NEHD will put together the strongest collective offering business strategy, marketing, finance, legal, sales, compliance, HR, international trade and M&A specialists to provide tailored support to businesses applying.

Heidi, NEHD's founder, said: "In a saturated market of subject area experts working independently, and sometimes providing contradictory advice, we at NEHD provide a collective support solution that is completely unique."

■ Find out more at NEHD.co.uk



Have fun this summer at Pine Martin Grange, your local *award* *winning* care home

Pine Martin Grange is a luxury care home in the heart of Dorset, offering residential, nursing and dementia care. Enjoy al fresco dining in our landscaped gardens, outdoor activities and trips out to see the local area.

Please contact us on 01929 768204 or visit www.dorsetcare.co.uk


PINE MARTIN GRANGE
WAREHAM

Business



Redmayne Bentley

Economic update

GLOBALLY, financial markets continued to decline throughout the second quarter of 2022. Inflation continued rising across much of the western world and markets have been driven by tighter monetary policy and expectations of future rate rises. The uncertainty has made markets highly sensitive to new information, with the VIX, a measure of expected market volatility over the next 30 days and sometimes referred to as ‘the fear index’, up 73 per cent in the past year.

The Federal Reserve in the US announced a 0.75 percentage point increase in the federal funds rate to 1.5 per cent – it was 0.25 per cent at the beginning of the year. In the UK, the Bank of England increased rates from 1 per cent to 1.25 per cent, and the European Central Bank has embarked upon a new and uncertain monetary policy of increasing rates, which now stand at -0.5 per cent, while supporting the debt markets of heavily-indebted member states.

Inflation has increased steadily across markets, which harms consumer and business confidence and which can ripple across the economy. In the US, core inflation, which excludes volatile food, shelter, energy and used vehicles prices, has reached 5.8 per cent, while in Europe this figure stands at 3.8 per cent, suggesting that inflation is beginning to feed through the wider economy.

This increases the risk of inflation being ‘sticky’ or hard to reduce. Inflation expectations are often reflected in wage demands and can represent the rate of price increase that companies can get away with, both factors can

create a vicious cycle and cause a new inflation rate to become embedded.

The UK is no exception to the West’s inflation rule. UK inflation stands at 9.1 per cent, with the economy being uniquely exposed to tight labour markets, a global energy shortage and commodity inflation. With a well-publicised energy price cap increase in October, and a shift to the price cap increasing quarterly instead of bi-annually, consumer sentiment has fallen to its lowest point than even the depths of the financial crisis. This will likely have serious implications for consumer and business spending, with high inflation and tax rises causing the OECD – the Organisation for Economic Co-operation and Development – to warn that the UK will have the worst growth in the G20 bar Russia.

The outlook therefore is certainly one of negative emotions at present. Sentiment across consumers and businesses remains low and falling as both struggle to grapple with rapidly rising costs and a squeeze on real incomes. However, growth in underlying businesses, particularly in the US, remains reasonable. While figures have slowed from the post-pandemic bounce many had experienced, analysts are forecasting earnings per share and sales growth of just over 10 per cent for 2022, with the figures at 9.49 per cent and 4.81 per cent for 2023 respectively. This remains a healthy level of growth and, while such figures are merely forecasts which remain sensitive to recessionary fears, many of the top companies across the globe continue to invest and grow.

Kate Spurling, investment manager, Redmayne Bentley. Phone: 01202 714450; email: kate.spurling@redmayne.co.uk

Kate lives in Swanage and is based at Redmayne Bentley’s Bournemouth and Poole office.

Redmayne Bentley is authorised and regulated by the Financial

Conduct Authority. Members of the London Stock Exchange.

The Redmayne Bentley Bournemouth and Poole office is at 139 Commercial Road, Ashley Cross, Poole, Dorset BH14 0JD.

Follow us on Twitter @ [redmaynebentley](https://twitter.com/redmaynebentley) and visit us on the web at www.redmayne.co.uk/bournemouth

Whizzbits
Computer Sales & Support

- PC and Laptop support & repair
- Virus removal and prevention
- Internet setup (wireless/wired)
- Microsoft Windows issues resolved
- Computer hardware sales & upgrade
- PC Health & security checks
- Data recovery & backup
- 1-2-1 Tuition

Call Pete on:
01929 421989
or **07900 992110**
Email: info@whizzbits.co.uk
www.whizzbits.co.uk

Suttles

BAGGED DELIVERIES OF DECORATIVE CHIPPINGS, BUILDING AND LANDSCAPING AGGREGATES FOR YOUR GARDEN.

Tel: 01929 439444 www.suttles.co.uk [Suttlesstonequarries](https://www.facebook.com/SuttlesStoneQuarries)



Check your National Insurance record

In certain circumstances it can be beneficial to make voluntary National Insurance Contributions (NICs) to increase entitlement to future benefits, including the State or New State Pension for self-employed persons.

You might want to consider making voluntary NICs if:

- You are close to State Pension age and do not have enough qualifying years to get the full State Pension
- You know you will not be able to get the qualifying years you need to get the full State Pension during the remainder of your working life
- You are self-employed and do not have to pay Class 2 National Insurance contributions due to a history of low profitability
- You live outside the UK but want to qualify for benefits.

If you fall within any of these categories, it may be beneficial to apply for a State Pension forecast and examine whether you should consider making voluntary NICs to make up missing years, known as topping up. Not everyone will benefit from making voluntary NICs and much will depend on how close you are to retirement age and your NIC payments to date.

Usually, HMRC allow you to pay voluntary contributions for the previous six years. The deadline is 5 April each year. This means that you have until 5 April 2023 to make up for gaps for the tax year 2016-17

MKL Accountants Limited
Chartered Certified Accountants
Herston Cross House, 230 High Street
Swanage BH19 2PQ

T: 01929 425552
E: mail@mkla.co.uk
W: www.mkla.co.uk

Pets

DIXEYS MEADOW DOG EXERCISE AND TRAINING FIELD



"Just to let you know my dogs absolutely loved the field. It was so lovely to let them off and for them to be safe"
Janette

Available to hire for your exclusive use,
for you and your dog
2 acres of well-drained and level paddock
Fun rustic agility course
In the heart of Wareham, an area of natural beauty

Enquiries 07979 902045
Summer Opening Times 6am-9pm

Help pets cope

MOST domestic pets are covered with fur and so can't regulate their body temperature by sweating.

They rely on other mechanisms to cool their body temperature, including lying on cool surfaces and dilation of the blood vessels in their skin to allow heat to disperse.

Dogs will pant to encourage heat loss.

Heatstroke occurs when environmental temperatures rise to dangerous levels and pets are unable to compensate by moving away into cooler areas.

The cooling systems of the body become overwhelmed, leading to hyperthermia – overheating – which can result in organ damage and

failure.

Avoid heatstroke by walking dogs early or late, checking the pavement isn't too hot to walk on.

Provide cooling jackets/mats or paddling pools with plenty of shady areas.

Unrestricted access to fresh water throughout the day, topping up if necessary.

For pets like rabbits, bottles of ice wrapped in a towel placed in a shady spot for them to lie against works well.

Keeping long-haired pets regularly groomed throughout the summer months, will help reduce the risk.

Signs of heatstroke include panting, drooling, lethargy, restlessness, confusion, trembling, seizures, vomiting

MARGARET GREEN ANIMAL RESCUE

Can you help?

OUR charity shops across Dorset are in need of good quality donations, including clothing, bric-a-brac and even secondhand items.

By giving your pre-loved items to our charity shops, you will be supporting a good cause and helping us to raise the vital funds needed to look after the rescue animals in our care. You can drop off your donations to our shops during their opening hours, or if you have a large item, please contact your nearest shop directly and we will arrange to collect this for you.

Make sure you check out the wonderful selection of stock we have available while you're visiting! The teams would love to see you and every purchase will make a big difference to rescue animals in need.

Please visit our website, www.margaretgreenanimalrescue.org.uk, to discover the addresses of our charity shops and to find out more

about the work we do.

Join us!

WE are looking for volunteers to help in our charity shops for a couple of hours a week from Monday-Sunday. This is a fantastic opportunity to get involved in the community and to make a real difference to a local charity.

Whether you can help by greeting and serving customers, sorting donations, helping with our window displays or preparing stock for the shop floors, the shops will be incredibly grateful for your support.

If you would like to lend a helping hand and become a volunteer, please contact the shops directly by phoning: Ferndown: 01202 875207; Kinson: 01202 582115; Swanage: 01929 421634; Weymouth: 01305 839201; Wimborne: 01202 880462; Winton: 01202 514976.

We look forward to welcoming you to the team!



Margaret Green's charity shops are looking for volunteers.



Pets

with the heat



PHOTO: lokalsportessen/Pixabay

and diarrhoea, gums turning bright red.

For cats, the signs are similar with open-mouth breathing and similar for rabbits and guinea pigs.

If you do think your pet is

showing early signs of heatstroke, you should speak to your vet immediately who will advise on the best course of action.

VetSmiths
Wimborne

Duncan and his team would like to welcome you and your pets to Lynwood Vets – Wareham and Swanage’s local trusted vet for over 50 years!



With a wide range of expertise and facilities, we offer a comprehensive service for all your pet’s health care needs



Free parking at all Lynwood Vets Branches
Free well Pet Health Check for all new clients
24/7 Care provider at our Wimborne Small Animal Hospital

🏠 9 Leanne Business Centre
Wareham BH20 4DY
☎ 01929 552692

🏠 87 Ulwell Road
Swanage BH19 1QU
☎ 01929 422213

✉ purbeck@lynwoodvets.co.uk

📱 @lynwoodvets 📷 @lynwood_vets



WOLFIES Raw & More Dog Food Supplies

OPEN 7 DAYS A WEEK!

- 1: Healthier teeth & gums
- 2: Healthier skin & coat
- 3: Boosted immune system
- 4: Improved digestion
- 5: Increased energy & vitality

Feeding Raw gives Them More!
Active/Working Dog Food

Wolfies stock a variety of good quality raw food and slow steamed-cooked food and treats etc, prices starting from as little as £1.15 treats starting from £0.45p



WOLFIES Raw & More Dog Food Supplies

📍 33 Banbury Road, Nuffield Industrial Estate, Poole BH17 0GA 📞 01202 675410 🌐 www.wolfiesrawandmore.com

Feature

Pirates, pineapples and a famous Scout on children's walks with hidden stories

By Lorraine Gibson

THE school summer holidays are here and while we know that walking's good for the soul, the head and the heart, getting children excited about going for a walk isn't always easy.

As a creator of family-friendly walking tours for Ordnance Survey's 'Secret Stories' walking app, my main tip is this – present going for a stroll as a series of mini-adventures and suddenly it's a walk in the park.

When my daughters were toddlers, I invented make-believe characters who hid in parks, rockpools and so on, then got them to find signs of them. Tree stumps became dance floors, lumps of moss mini-sofas and shells were transport, naturally.

When they morphed into tweens with screens, walking for walking's sake held little appeal. However, fossils piqued their ponytails, so on went the wellies and goggles and they'd hammer lumps out of stones at the beach in the hope of revealing a glistening ammonite.

Get yours to search for clues, guess the purpose of curious objects and add the odd challenge, quiz or activity en route. These short activities help turn their idea of boring into something that's fun. They'll hardly notice they're exercising, you'll be amazed at what mysteries lie right on your doorstep and it costs nothing.

If you know your area, earmark a few landmarks. Not just statues and buildings. Think small. Think hidden. Think something on a building, say an odd carving or a date telling how old it is. Get them to look up – I've found many curiosities on



A statue of Robert Baden-Powell, founder of Scouting, in repose is installed on the Quay in Poole harbour.



The ducking stool at Christchurch and Sea Music.



PHOTOS: Lorraine Gibson

roofs. And down, where entire worlds lie undiscovered on pavements and paths.

Use clues then to direct them to something with a tale to tell. In my 'Christchurch Miracles and Mysteries' tour,

if they find a medieval ducking stool, they get to hear a clip of the dip!

Spooky tales, depending on age, work and repeating odd names or phrases – one of my favourites is 'crinkle-crinkle wall' – really fast five times cracks them up. Get them guessing how many steps lead to something and the closest gets to choose when to stop for lunch.

But we're not all tour guides, so how do you incorporate these things while busy keeping them safe, fed and happy?

That's where 'Secret Stories' comes in. With its short distance options, vast choice of locations, including one in the heart of Poole, and interactive digital maps with simple instructions on where to go, it makes you an instant trail leader.

There are bite-sized narratives you can follow – or not – and some trails have fun audio clips which are generally irreverent in tone – think 'Horrible Histories' with maps.

The app takes you virtually by the hand, pointing out stuff and explaining local quirks – it even tells you where the dodgy pavements, muddy puddles and toilets are.

In my 'Poole Pirates & Pineapples' trail, children can listen to scurvy pirates and safely climb the steps of a tall sculpture to locate the next destination where they meet the chap who invented the Scouts and hear why he's sitting on Poole Quay.

The app is free and tour downloads vary between completely free to about a fiver.

Other Dorset locations include Christchurch, Beaulieu, Buckler's Hard, Sherborne, Lyme Regis, Shaftesbury, Abbotsbury, Wimborne, Dorchester, Muford, Hengistbury Head, Blandford, Portland, Purbeck and Milton Abbas.

Visit <https://shop.ordnancesurvey.co.uk/apps/secret-stories/>

Folk festival more than just music

PURBECK Valley Folk Festival has a super line-up this month – including Mexican party band Los de Abajo, critically acclaimed multi-award winning ‘folk royalty’ Show of Hands and Radio 2 favourite Kathryn Williams.

BBC Folk award-winning Rionnagh Connolly with her funk-folk band Honeyfeet, Shooglenifty and Michael McGoldrick Band also feature.

This festival also welcomes world music from N’Famady Kouyaté (Guinea) and Gasper Nali (Malawi), and a big helping of Americana/Country from Amethyst Kiah, The Once, Laura Cortése & the Dance Cards and Dana Wylie.

The festival also has lots of non-musical activities for adults and children.

Last year saw the addition of a comedy stage to the festival which went down brilliantly, and another



Purbeck Valley Folk Festival has a great line up of bands and more.

programme of stand-up is being put together.

Children’s activities include storytelling, theatre workshops, fun crafts, puppet shows, bubble displays, baby/toddler Rhyme Time sessions, face-painting, a treasure hunt, bouncy castles, fancy dress, maypole dancing and Morris dance workshops, family

ceilidh, space-hopper obstacle course, welly-wanging, and circus skills performances and workshops.

All children’s activities are included in the ticket price.

The craft area is better than ever with workshops in crochet, wicker modelling, cyanotype printing, clay modelling/pottery, bunting



printing, tie-dye, blacksmithing, traditional woodturning, pebble painting, origami and more.

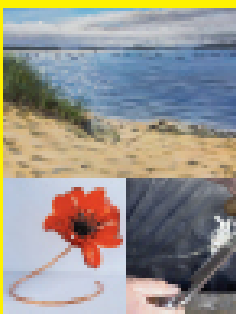
For musical children youth music workshops are on offer and ‘Come and Try’ instruments try-outs which allow youths and adults the opportunity to try out instruments they might not get a chance to otherwise without having to invest in them first.

The festival is at Purbeck Valley Farm just off the main A351 in Harman’s Cross from Thursday to Saturday, August 18-21. Tickets are on sale from £150 (£75/£30) for the weekend, including camping. Visit www.purbeckvalleyfolkfestival.co.uk

The Purbeck Gazette
To advertise your business contact:
Donna Garner: 07714 289411

The Dorset Arts & Crafts Summer Exhibition 2019

Friday 2nd - Tuesday 6th August
Open 10am-5pm, Tues 10am-4pm



Superb Contemporary & Heritage Crafts
Demonstrations
Have-a-go Workshops
Refreshments
Free Parking

Purbeck School, Worgret Road
Wareham BH20 4PF

www.dorsetartsandcrafts.org
Registered Charity 306252



The Village Inn Ulwell
is a pleasant stroll away from Swanage
or a place to rest when walking the Purbeck Hills.

OPEN DAILY FROM 10 AM
For Coffees/Teas or Drinks from the bar.
BREAKFASTS 10am - 11.45am
LUNCHES 12pm - 2pm
SUNDAY ROAST
booking is advisable
2pm - 5.30pm Afternoon drinks only
EVENING MEALS 5.30pm - 8.45pm
Car Parking available
Sheltered Courtyard Seating Area
Arrange a swim in the heated indoor pool

Ulwell VILLAGE INN
Ulwell Road, Swanage, Dorset, BH19 3DG
01929 427644 enq@ulwellcottagepark.co.uk

Arts & Entertainment

Peace, love and wellness equals happy campers

By Lorraine Gibson

FESTIVALS have always had a bit of a wellness vibe going on, but often in the shape of a solitary yoga area in a far corner of the field.

Not anymore. A pandemic-driven increase in the focus on mental well-being and health issues has seen self-care take centre stage this summer and never more so than at local weekender Camp Bestival.

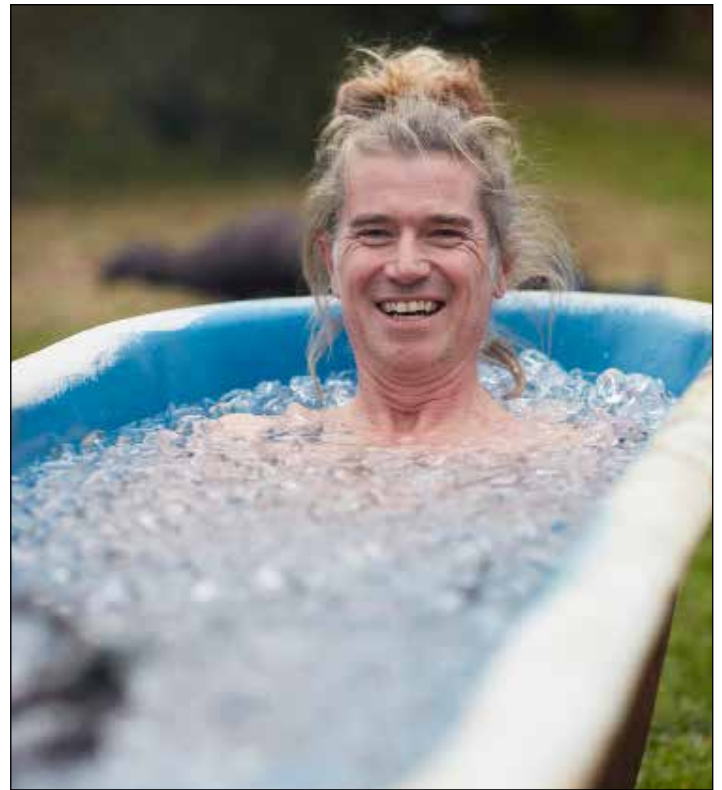
Co-curators Josie and Rob da Bank, pioneers of the well-being movement, have encouraged it at their festivals for years, but this time feelgood options are off the scale.

From ice baths, sleep



therapies and breathwork, to meditation, moon healings and cleansing fire ceremonies, the family-friendly event at Lulworth will feature fields of calm and restoration for festival-goers to unwind between the music mayhem.

Rob da Bank, who told the Purbeck Gazette he sees the Dorset festival as his own family holiday, said: "Josie and



Ice baths and much more on offer to visitors to Camp Bestival.

I have always had a wellness space since we started Bestival in 2004 and loved being able to sit somewhere quiet and contemplate the world, have a treatment or try something new – from knitting to chanting with strangers!"

He added: "This summer we feel even more blessed to be able to put on a festival with everything that's happening in the world and for the first time are giving our wellness areas the theme Freedom."

As with most families, the da Bank children's happiness is crucial to the success of the holiday. "So many of us take it for granted we can jump in a car or on a train, turn up at a festival and watch our kids run free as we sit back and enjoy our freedom," he said.

"This is not the case for so many, so, in the most positive and inspiring way, we hope to inject some of that spirit into everything."

At Slow Motion, a dedicated zone for boosting mental health, reducing stress and improving sleep, ice baths, also known as cold water immersion, claim to improve well-being and aid muscle recovery – useful after hours of dancing. The event also has breathing and bespoke

mindfulness areas, The Retreat yoga will stage children-friendly yoga workshops and Cosmic Kids will keep them calm.

Nearby is the Sleep Retreat, welcome at an action-packed festival, wild moon well-being and women's circles that 'give women the tools to connect and live a more balanced life'. Then there are 'gong' baths where reverberations are said to rejuvenate the spirits and Shamanic Drumming Journeys to help solve life's mysteries.

The Water and Stone Wild Spa is all hot tubs, saunas and a Bedouin-style relaxation lounge, but if the fastest way to feeling good is a full-on physical blow out, try Camp Bestival's Boot Camp.

2022 marks a 14-year history of entertaining families for Camp Bestival. Rudimental and Rag 'n' Bone Man will lead this year's line-up as legends Sister Sledge, Earth Wind & Fire Experience and Kool and The Gang spread disco fever, while Razorlight, Shed Seven and party bangers King Example will also rock the stage.

■ Camp Bestival Dorset – Lulworth Castle, 28-31 July. campbestival.net

The Red Lion

Swanage
63 High St



A Family Run

Traditional 17th Century Inn

Great Selection of up to 6 Real Ales & 50 Ciders

Varied Menu with Light Bites & Specials Boards

Friday Night Steak & Wednesday Night Curry Deals

Traditional Sunday Roasts

Large Beer garden with Children's Play Area

Occasional Live Music

Heated Smoking Area

3 Star Accommodation ~ All Ensuite Rooms, One with Disabled Facilities

Car Park with Reserved Parking for Residents

01929 423533

www.redlionswanage.com

Arts & Entertainment

Veteran Johnny still playing the numbers game

IF mathematics is the objective language with which to describe the universe, then Johnny Ball's Wonders Beyond Numbers – coming to Lighthouse, Poole's centre for the arts, is its travel guide!

At 83, Johnny's infectious enthusiasm is undiminished as he asks young people: 'Why can't you be a genius?'

The stand-up comedian turned television presenter has been popularising Maths and Science since the 1970s when his Think of a Number series inspired a generation towards careers in Maths, Science, Technology and Education.

Now he's doing it for their children and grandchildren and his style is every bit as engaging as it was as he takes the audience on a magical tour of everything mathematical.

Wonders Beyond Numbers entertains through Maths and Science and demonstrates that confidence in the future for young and old alike, is both achievable and an absolute necessity.

Johnny shows how a Greek measured the height of a pyramid but also knew the maths needed to put a satellite in orbit today. He re-creates

Archimedes' famous 'Eureka Streak' and shows how lightening calculation is possible for anyone.

Galileo said everything in the universe is written in the language of mathematics – and Wonders Beyond Numbers is Johnny's introduction to that language.

Johnny Ball wrote 20 factual series for BBC and ITV, the best known of which – Think of a Number – won a BAFTA in its first series and went on to tour as a stage version toured for 13 years.

Johnny was an Ambassador for British Engineering from 1993 to 2003 and wrote, produced and starred in five educational stage musicals, including two for the Department of Education.

His Mind Zone live show in the Millennium Dome sold out for the entire year. His television shows, books and videos have won major awards in Europe, Asia and USA, and his books – nine of them – sell in more than 40 languages.

Johnny Ball is at Lighthouse on Wednesday, 14 September, and for tickets and information phone 01202 280000 or visit www.lighthousepoole.co.uk



Think of a Number was Johnny Ball's best known television show.

THE MOWLEM

Theatre, Cinema & Function Rooms

www.themowlem.com

LIVE SHOWS:

The Much Mission - Family Live Show including free kids' popcorn, Monday 8th August at 11 am and then later at 2 pm.

Beach Boz Tribute Show inc. after-show party in The Showbar, Wednesday 10th August, 7.30pm

The Elton John Show inc. after-show party in The Showbar, Saturday 13th August at 7.30 pm

Dustbin Doris - Family Live Show including free kids' popcorn. Monday 15th August at 2 pm.

Richard Digance Wednesday 17th August at 7.30 pm

dSuK in Tribute to Dire Straits inc. after-show party in The Showbar, Saturday 20th August at 7.30 pm

The Beatles for Sale inc. after-show party in The Showbar, Wednesday 24th August, 7.30pm

Pop Up Bowie inc. after-show party in The Showbar, Saturday 27th August at 7.30 pm

Seriously Collins: The Phil Collins Tribute Show LIVE inc. after-show party in The Showbar, Monday 29th August at 7.30 pm



MOVIES:

Tickets can be booked online see website for prices.

The Railway Children Return (U), 5th & 7th August at 7.30 pm and then 9th, 11th, 12th 16th & 18th at 11.30 am

Minions: The Rise of Gru (U), 21st & 23rd August at 11.30 am

Lightyear (PG), 1st, 2nd, 3rd, 4th, 5th, 6th, 7th at 2.30 pm and then on the 19th, 22nd and 25th August at 11.30 am

The Road Dance (15), 8th, 9th & 11th August at 7.30 pm

Good Luck to You, Leo Grande (15), 12th, 14th, 15th, 16th & 18th August @ 7.30 pm

We also have the Record Fair upstairs in the Community Room on Sunday 7th August!



CLUBS & SOCIETIES:

Monthly

- Please note that there are no **Making Memories** Dementia Friendly Movies or cafe openings in August. It will be back in September.

- We welcome the Swanage Arts & Crafts Market back every Saturday and Sunday outside the Mowlem to October.

Weekly / Bi-weekly

- Health Qui Con Community** meets every Wednesday at 1.30pm in the Community Room.

- We welcome the **Swanage Arts & Crafts Market** back every Saturday and Sunday outside the Mowlem to October.

www.themowlem.com

Arts & Entertainment

Learn skills with stone

BURNGATE Purbeck Stone Centre, a small not-for-profit charitable trust in Swanage, is staging an open week.

The centre specialises in teaching stone carving skills, including relief carving, letter cutting and stone masonry, to everyone from complete beginners and families through to those with years of experience.

The open week runs from Sunday, July 24, to Friday, July 29, daily from 10am to 4pm and provides a chance to see what is on offer at the centre.

Visitors will be able to see stone carvers in action, and chat to them, and courses, bookable at www.burngatestonecentre.co.uk/courses/, will be running.

Courses are: Monday, 25



Burngate Purbeck Stone Centre is staging an open week.

July – Introduction to Stone Carving 10am-4pm, £95;
 Tuesday, 26 July – Have a Go 10am to noon, adults £35/ accompanied children £20;
 Wednesday, 27 July – Have a Go 10am to noon, adults £35/

accompanied children £20;
 Thursday, 28 July – Have a Go 10am to noon, adults £35/ accompanied children £20;
 Saturday, 30 July – Have a Go 10am to noon, adults £35/ accompanied children £20.

CORFE Castle is taking part in the National Trust's Festival of Archaeology.
 Family activities, demonstrations, talks and hands-on experiences are on offer at the castle until Sunday, 31 July, from 10am-6pm.

Visitors will discover what life would have been like inside the castle walls and try their hand at historic crafts, including mosaic and pottery making, watch live displays, including Bronze Age metal casting, ancient pottery making and weaving, and join history talks and get hands on with artefacts ranging from the Neolithic period to the Iron Age.

Normal admission charges apply for 'Corfe before the Castle' but no additional charges are payable for events, and entry is free to the castle grounds on 31 July.

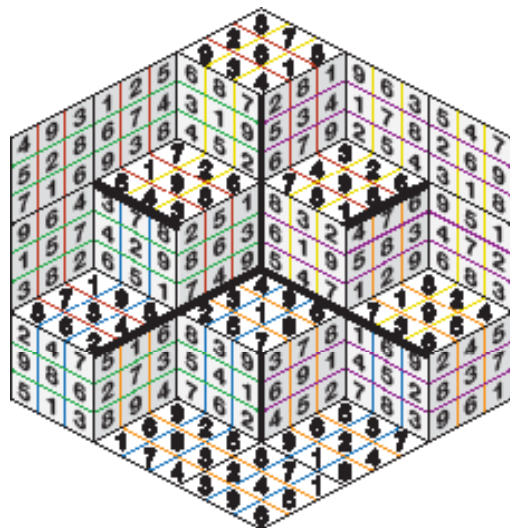
Puzzle solutions

(from pages 24-25)

Sudoku

6	1	7	9	4	2	3	5	8
3	8	5	7	6	1	2	4	9
4	9	2	3	8	5	6	7	1
1	4	3	6	2	8	5	9	7
5	7	8	1	3	9	4	2	6
2	6	9	5	7	4	8	1	3
7	2	4	8	1	6	9	3	5
9	3	6	4	5	7	1	8	2
8	5	1	2	9	3	7	6	4

Jumbo sudoku



Cryptic crossword

C	H	O	L	E	S	T	E	R	O	L		
S	O	I	P	C	R	P						
T	O	P	O	G	R	A	P	H	I	C	A	L
A												
T	I	R	A	M	I	S		D	E	E	M	
E	E	E	E	A	S	E						
S	P	E	N	T	E	L	A	T	E			
U	R	T	L	F	R	P						
P	E	E	R		C	A	R	R	I	A	G	E
S	H	S	D	E								
E	L	E	C	T	R	I	C	S	H	O	C	K
T	N	E	D	C	R	Y						
A	D	I	M	E	A	D	O	Z	E	N		

Killer sudoku

8	1	9	3	6	2	4	7	5
3	4	7	5	8	1	6	2	9
2	6	5	7	9	4	8	1	3
9	7	1	6	2	5	3	4	8
6	2	8	4	3	7	5	9	1
5	3	4	8	1	9	7	6	2
7	9	3	2	5	6	1	8	4
4	8	2	1	7	3	9	5	6
1	5	6	9	4	8	2	3	7

Crossword

B	Y	D	C	E	U							
P	L	E	A	S	E	E	A	T	I	N	G	
E	N	F	N	C	I							
S	M	U	G		I	N	S	P	E	C	T	S
I					N	O	T	Y				
A	S				S							
H	I				R	A						
	P	L	A	C	E	O	F	A	R	M	S	
O	I	I	B									
R	O											
M	A	E	E	A	B							
E	P	O	N	Y	M	S	E	T	T	L	E	
H	T	A	S	E	E							

Arrow words

T	E	U	I									
A	L	S	A	N	G							
A	B	L	E	B	B	C						
L	U	C	K	S	O	T						
E	X	T	C	O	M	A						
A	S											
N	U	T	M	A	P							
K	E	M	P	T	I	N	K					
V	L	A	B	O	U	R						
B	E	R	Y	L	N	S	A					

Wordsearch

R	O	A	S	U	G	A	A	R	C	G	N	W	D	N
T	I	W	R	Y	L	R	A	E	Y	N	Y	A	E	A
T	S	D	I	B	A	L	G	N	N	H	L	K	Y	
H	L	E	R	L	A	R	N	I	L	R	L	C	E	
E	E	D	I	G	L	O	T	N	C	S	E	O	N	
R	K	G	I	N	N	O	A	Y	A	O	I	W	D	D
A	A	L	L	S	I	W	C	R	G	O	N	U	U	
P	U	A	D	I	T	T	R	A	A	G	A	D	R	
I	Q	I	R	B	N	I	D	E	M	R	N	T	Y	A
S	H	L	A	E	A	T	L	A	M	I	B	T	I	N
T	T	R	O	T	O	U	I	L	T	M	E	A	I	C
R	R	T	A	D	T	C	B	N	E	I	T	M	E	
A	A	Y	C	R	L	C	C	O	G	D	C	L	W	S
I	E	I	T	D	I	A	U	U	W	C	E	G	G	I
R	N	A	N	C	U	E	D	I	R	G	R	T	R	

Brain chain

31	18	8	36	17	63
----	----	---	----	----	----

Brain chain (hard)

72	24	77	50	26	138
----	----	----	----	----	-----

OUT & ABOUT

PURBECK INTERNATIONAL CHAMBER MUSIC FESTIVAL

You may already know Dorset-born cellist Natalie Clein. She started playing the cello at the age of six and attended Talbot Heath School in Bournemouth.

At 16, she won the title of BBC Young Musician of the Year with her performance of the Elgar Cello Concerto and went on to become the first British winner of the Eurovision Young Musicians competition.

Since then, she has come back to her family in Purbeck often and now runs the Purbeck International Chamber Music Festival taking place in early September every year.

Natalie Clein has invited spectacular musicians to the festival playing a range of music of audience favourites to adventurous new pieces. This year's theme is Freedom, discover Composer Deborah Pritchard's world of music and images and improvisations by

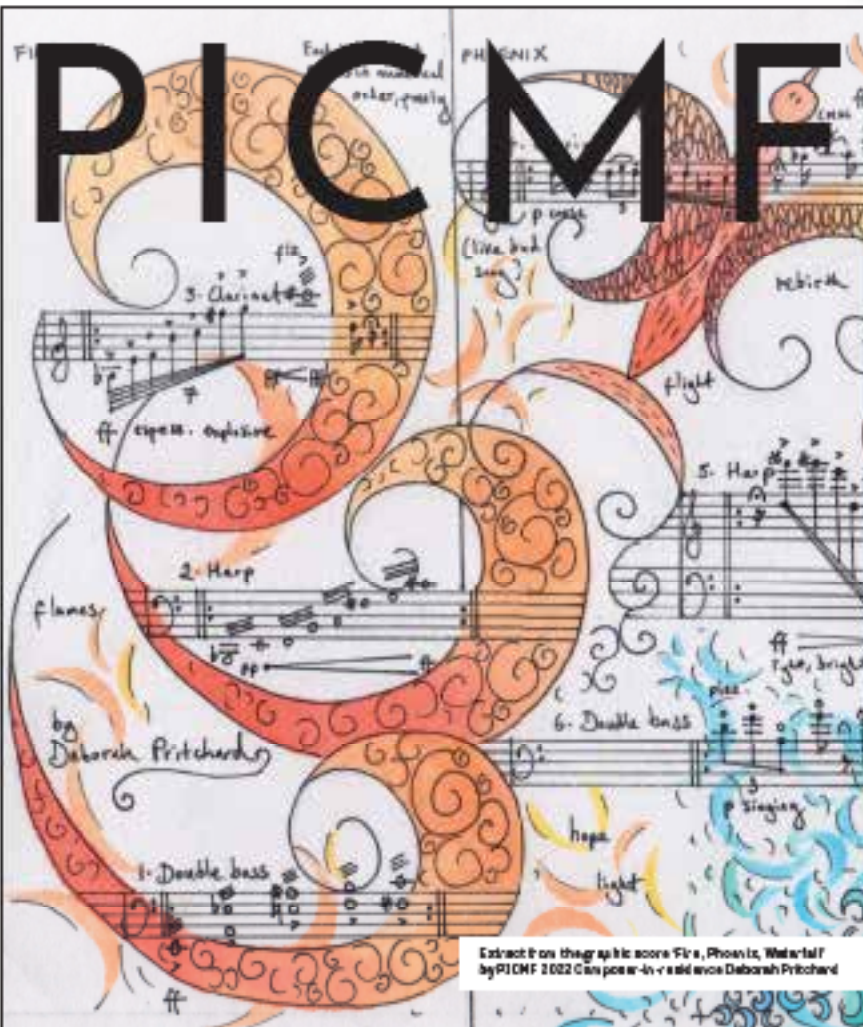
Europe's leading performers.

11 concerts will take place in 9 different venues over 4 days between 1-4 September.

The first concert takes place on Thursday 1 September at 5pm in Lulworth Castle's stunning Chapel St Mary.

The festival concludes with a family concert in Hermans Cross Village Hall designed to delight an audience of all ages.

All details and tickets can be found on their website picmf.org



Extract from the graphic score 'Phoenix, Well-tal' by PICMF 2022 Can post in - r e ad voice Deborah Pritchard

Purbeck International Chamber Music Festival



Freedom

1-4 September 2022
Natalie Clein cello & artistic director

A unique mix of classical masterpieces, improvisations and spoken words in 11 concerts over 4 days

Come and enjoy exhilarating live music in beautiful venues across Dorset

Concerts in Worth Matravers, Corfe Castle, Swanage, Lulworth and the Dorset Museum in Dorchester

TICKETS & PROGRAMME
www.picmf.org OR CALL 0333 666 3366



#PICMF2022

ROLL UP, ROLL UP TO JOIN IN PLANET PURBECK

ORGANISERS of Planet Purbeck's second festival are urging anyone who wants to hold an event to book their slot as places are filling up fast. Organisers aim to make the event bigger, better and broader than last autumn's festival, which more than 2,000 people enjoyed at a host of special activities staged across Purbeck.

The festival will be expanded from a week to ten days, starting on Friday, September 16, and centered around major events in Wareham, Corfe Castle, Studland and Swanage. And although the general eco-themes of sustainability and protection of nature will be maintained, fun elements such as music and food and drink will be added.

Rob Waitt, from Planet Purbeck, said: "Our first festival was a shot in the dark for us but exceeded every expectation. Nearly 90 per cent of those who attended the events said they had been made more aware of environmental matters. And the vast majority said they had been inspired to change their behavior or lifestyle. That's a terrific result for Purbeck – and the planet."



The Klimmeridge 'rockpool rambles' at last year's Planet Purbeck Festival

Hosts' activities can range across the whole spectrum of ecology, from nature walks and workshops to photographic competitions and talks on community projects.

Rob said: "Those who held events last year told us they had generated income and helped to raise the profile of their business or organisation."

Hosting is free and activities can be booked at planetpurbeck.org/festival or by emailing planetpurbeckevents@gmail.com

HORROR, DRAMA - AND JAMES BOND - SET TO FEATURE IN PURBECK FILM FESTIVAL OUTDOOR SCREENINGS

The Purbeck Film Festival has announced the line up for its outdoor summer screenings, with a heady mix of horror, drama, adventure - and a 1990s classic.

Durston will be the stunning venue for *A Quiet Place* on July 28 and *Captain Fantastic* on July 29. *A Quiet Place* is a 2018 American post-apocalyptic horror film, revolving around parents who struggle to survive and rear their children in a post-apocalyptic world inhabited by blind monsters.

Captain Fantastic is a 2016 American drama telling the story of a couple and their six children living an isolated existence in the mountainous Washington wilderness.

Corfe Castle will form the backdrop to three outdoor films in August - American computer-animated musical comedy *Sing 2* on the 26th, James Bond's *No Time To Die* on the 27th and the ever popular *West Side Story* on the 28th.

The 25th Bond film stars Daniel Craig in his fifth and final appearance as the M06 agent, with the usual mix of a dangerous mission leading to fast car chases, evil men plotting to wipe out much of the world's population and unsurprisingly, a beautiful woman who falls in love with our hero.

The ever popular *West Side Story*, inspired by *Romeo and Juliet* is a musical set in the mid-1950s in New York's Manhattan, exploring the rivalry between the Jets and the Sharks, two teenage street gangs of different ethnic backgrounds, with sing-along songs including *Maria* and *Tonight*.

More outdoor films will be screened in Wareham in September. Andrea Etherington, who chairs the Festival, said: "This year's outdoor programme offers something for all cinema fans in very special settings."

16TH - 25TH SEPT 2022
LOCATIONS ACROSS PURBECK
NATURE & WILDLIFE
 FOOD - DRINK - MUSIC - ART - FILMS - FUN - KIDS ACTIVITIES

PLANETPURBECK.ORG

#PLANETPURBECK @PLANETPURBECK @PLANET_PURBECK

MAIN SPONSOR
talk talk village trust
 A VERY SPECIAL QUALITY

OPEN AIR CINEMA
 at Corfe Castle
 AUGUST BANK HOLIDAY WEEKEND 2022

Experience the magic of film in the ruins of historic Corfe Castle

Friday 26th	<i>Sing 2</i> (U)
Saturday 27th	<i>No Time to Die</i> (12A)
Sunday 28th	<i>West Side Story</i> (12A)

£12 adults, £8 Children (ages 5-18) and £30 family ticket, children under 5 years free
 Gates open 7.30pm for 8.45/9pm screening

Advance bookings:
www.nationaltrust.org.uk/corfe-castle/whats-on

OCTOBER FESTIVAL
 Friday 14th to Saturday 29th October 2022
 2 weeks | 70 films | 80 venues
 Screening a selection of foreign language, independent and classic films
Special guest and gala events to be announced soon

Follow us on

purbeckfilm.com

SCAN ME

SWANAGE FOLK FESTIVAL

Swanage Folk Festival is celebrating its 30th Anniversary this year from 9-11 September and has a bumper line-up booked.

The multi-talented Seth Lakeman headlines on Saturday night and, on Friday evening, Festival favourites Oysterband will be kicking off the three-day event. Foot-stomping folk band Sheelanagig will be closing the Festival with their own brand of gypsy funk on Sunday.

Banter, Faustus, Man the Lifeboats, Tinderbox, Mother Ukers, Monkey See Monkey Do, Wareham Whalers and The Maggies are just some of the other guests appearing.

There are free Marquee concerts on Saturday and Sunday afternoons with food and drink available on the main site at Sandpit field which also hosts the craft fair. Over 60 dance sides will be performing round the town during the weekend and, this year, there is a Med Hatters Competition that will be raising money for Ukraine with all entry donations matched by the Festival.

There will be singers performing around the town as well as a ceilidh and sessions in a number of the local pubs. Music and dance workshops are also on offer.

Margaret Tyrer, Folk Festival Chair, says: "We have really pushed the boat out this year, as it is our anniversary, and we really hope that people will come and help us celebrate."

Tickets are available for the weekend or for individual concerts via the Festival website, www.swanagefolkfestival.com where more information on all the events can also be found.



Follow us [swanagefolkfestival](https://www.facebook.com/swanagefolkfestival)

A weekend of fun for everyone!

9-11 September 2022

All based around the sea front and town centre

It's our 30th Anniversary!

A weekend of free and ticketed concerts, over 60 dance sides from across the UK, dance displays, dance and music workshops, craft fayre, children's activities and ceilidh.

Our fantastic line up includes - Seth Lakeman, Oysterband, Faustus, Sheelanagig, Man the Lifeboats, Geoff Lakeman & Rob Murch, Monkey See Monkey Do, and more...



Our webpage

All tickets available on line
Information correct at time of printing
www.swanagefolkfestival.com



Book your tickets!

PURBECK SPORTS CENTRE

Purbeck Sports Centre is offering a sizzling summer of activities for children over the school holidays. There is so much on offer; Archery, Football, Tennis, Nerf Gun Fun, Bikeability courses, Swimming courses and much more, there is something for everyone bound to keep kids busy all summer long!

This summer there will also be a Holiday Club for children aged 8 to 12, running 4 days a week throughout August. This holiday club is part of the HAF initiative and there will be free places available to those with an eligibility code. Children will benefit from a full day of Sports activities, including a swim in the pool and a hot lunch in the onsite canteen.

The centre also has a fantastic 25m indoor, heated swimming pool with inflatable fun sessions, comprehensive indoor and outdoor sports facilities, Virtual fitness classes, Gym and an exciting timetable of classes, activities and courses. Get more out of life with Purbeck Sports Centre. See swimming for Dorset kids this holiday!

Purbeck Sports Centre are delighted to be offering local children free swimming in our General Public swimming sessions over the summer holidays. This is an amazing initiative and we hope that local children will benefit from this opportunity.

Free swimming is for children within the Dorset Council area up to 16 years, proof of address in the area will be required. Free swimming is only available during General Public swims. No need to book. Plus that we have an Activity Pass.

Activity Pass - weekdays during the school holidays for £15!

Purchase a pass for your child and get 5 days (Monday to Friday) unlimited swimming, badminton, tennis, table tennis and squash. Suitable for all children, under 8's must be supervised by an adult.

Bikeability Training from Levels 1 to 3 – getting kids on the road.



Children's
Holiday Activities
What's on

- Intensive Swimming Lessons
- Kayaking
- Inflatable Fun
- Rookie Lifeguard
- Laser Tag
- Archery
- Holiday Club
- Slime Making
- Nerf Gun Fun
- Kids Tennis
- Football Fun
- Bikeability
- Archery Tag

Purbeck Sports Centre

Check out website for up-to-date information
dorsetcouncil.gov.uk/purbecksportscentre
01929 500 000

Children's
Holiday Activities
EVERY school holiday

- Activities for all the family. Keep the kids busy every day!
- Visit our website for exciting holiday activities
- Swimming pool open 7 days a week

Purbeck Sports Centre

Dorset Council

Check out our website for up-to-date information
dorsetcouncil.gov.uk/purbecksportscentre
01929 500 000

Spotlight Event Diary

Diary Entries are FREE if your event is FREE. If you charge, then it's £5 plus VAT per entry, per month. DEADLINE for JULY is NOON 9th June

KEY: * = Start time not known or n/a; Ffi = for further information; Sw = Swanage; Wm = Wareham; VH = Village Hall, Telephone code 01929 unless otherwise stated.

AUGUST 2022

WEEKLY EVENTS

Please call prior to attending events listed to ensure they are still on!

EVERY MONDAY

- 09.00 U3A Table Tennis Group meet at Harmans Cross VH.
 09.30 Under 2.5 years old group. Till 11am. at Parish Hall, Wm.
 09.45 Toddler Club URC, Sw. Till 11.15
 10.00 Table Tennis Club Methodist Ch. hall, High Street, Sw. All ages/abilities welcome. Steve: 424591, Malcolm: 427695
 13.00 Play and Learn at Wareham's Children's Centre, Stretche Rd, Wm. Till 2.45pm
 13.00 Under 1s and Tums at Chapel Lane, Swanage. Till 3pm
 14.00 Pins and Needles at Harmans Cross VH.
 14.00 Swanage Digital Champions. Support people in the community to use the internet and gain basic online skills. Booking essential on 01929 423485.
 14.00 Swanage Disabled Club meet until 4pm. Meeting place All Saints Church Hall, Ulwell, Sw. Transport available. Call Mrs Daphne Saville on 01929 425241 ffi.
 16.00 Colour Me Happy. Adult colouring session at Swanage Library. Drop in.
 16.45 Soccer Skills Sw FC First Sch chldn £1 Till 5.45. 425175
 18.00 Swanage Tennis Club at Beach Gardens, Sw. Free Cardio Tennis taster. Till 7pm
 19.00 Swanage Youth Club. School year 10 and upwards. Till 9.30pm
 19.00 Whist. Come & join us at the Reading Room, Church Hill, Swanage. Ffi, call 07984 968733
 19.00 Wareham Choral Society meet Lady St. Mary Church, Wm. Till 9.30. New singers always welcome. Ffi: 01202 632678.
 19.30 Purbeck Village Quire rehearse at Wm URC Church. New/visiting singers (no audition necessary). String & wind players also welcome. Ffi: 288045 or 480737.
 19.30 Wm Folk Dance Club Stoboro' VH. All welcome. 07749 853815. Email: warehamfolkdance@gmail.com
 19.30 Swanage Air Cadets meet at Air Training Corps HQ, Court Road, Sw. Cadets age 12+. Ffi: email: oc.2185@aircadets.mod.
 20.00 DARTS at the RBL Club, Sw.

EVERY TUESDAY

- 09.30 Isle of Purbeck Arts Club. Painting and sketching. At the Catholic Church Hall, Rempstone Rd, Sw. Till 1pm. Outdoors in summer. Ffi: Gina on 421689.
 09.30 Well Baby Clinic at Chapel Lane, Swanage. Till 11.30am.
 09.30 Kiddies Corner Mother & Toddler Group (term time only) No fee - donations welcome. Purbeck Gateway Church. 551415
 09.30 Wareham Art Club Workshop at Wareham Parish Hall. Ffi: 553718.
 10.00 First Steps Parent & Toddlers' Group. Swanage Methodist Church till 11.30am during term time. Ffi: Sylvia Garrett 425420, office hours.
 10.00 Wareham Croquet Club meet at the Recreation Ground until 5pm. New members and visitors welcome. Call Tony on 01929 550190 or Lesley on 01929 553927 or email warehamgolfcroquetclub@hotmail.com
 10.00 Sandford Toddlers at Sandford Community Hall, till 11.30am.
 10.00 A Place Of Welcome at 103 High St. Sw. Friendly drop-in for everyone, providing a free cup of tea or coffee, a listening ear, conversation and basic information. Everyone welcome, whatever the circumstances. Until 12 noon.
 10.30 Employment Hub at Swanage Library. Until 12.30pm. Book via Skills Learning on 01202 262300.
 10.30 Swanage Walking for Health Group starter walks (15-30mins). Start from the Mowlem Shelter on Swanage Seafront. Get back into the swing of things gently! Ffi: 481000
 10.30 Wareham Walkers. Convivial health walks for mainly older people, of up to two hours in and around Wareham, ending with coffee at a local tea room or pub. Ffi: www.wareham-walkers.org.uk or call 552933.
 12.00 Nature Tots (0-4yrs) at Bovington Memorial Hall Garden. Until 2pm.
 14.00 Swanage Walking for Health Group. Walks of 60-90mins, various locations. Walks are very social, for a range of abilities. Walks start from car parks at Studland, Corfe, Arne, Durlston, Langton, Acton, Worth and Kingston. Ffi: 481000.
 14.00 Swanage Town Walk. Local historian takes walks lasting 90 minutes. Meet outside the Museum in the 'Square'. No charge but voluntary contributions welcome.
 18.00 Sw Youth Centre Girls' Night (Yr 8+) Till 10
 18.15 Sw Cricket Club Practice till 8.30pm
 18.30 Sw Bridge Club Mowlem Community Room. 421840
 19.00 Wareham Air Cadets meet at Air Training Corps HQ, St Martin's Lane, Wm. Cadets age 12+. Ffi: email: oc.2185@aircadets.mod.
 19.30 Belvedere Singers rehearsal at Emmanuel Baptist Church, Victoria Avenue, Sw. BH19 1AZ. Parking on-site. Till 9.30pm. All singers welcome! 425074.

EVERY WEDNESDAY

- 09.45 Corfe Wool Workshop Corfe VH, East St. Members £1.50; non-members £2.50. Till 12.00. 427067
 10.00 Breast Feeding Group at Wareham's Children Centre, Stretche Rd, Wm. Offering peer support and breastfeeding counsellor advice. Till 12 noon. Ffi: 552864
 10.30 Play and Learn at Kids of Wool (BH20 6DY) until 12 noon.
 10.30 Books and More - at Swanage Library. Reading & discussion group.
 13.00 Studland Toddler Group at Studland Village Hall until 2.30pm.
 14.00 Herston Senior Citizens meet Herston Hall, Jubilee Rd, Sw. All welcome
 14.00 Health Qigong: Fitness and relaxation. Till 3pm. With Penny at the Mowlem Community Room, Sw. Ffi 07969925502
 14.30 Local Historian takes you on a town walk around Swanage, lasting 1 1/2 hours. No need to book, just turn up in the Swanage Museum in the Square, voluntary contributions welcome.
 16.15 Swanage Football Club U-7s Training til 5.15pm. £1. Ffi: 426346
 17.15 Swanage Football Club U-9s Training til 6.15pm. £1. Ffi: 426346
 18.00 Swanage Youth Club. School years 7&8. Till 8.30pm
 18.30 Sw & Wm Hockey Club Junior (6-14yrs) Training. Wm Sports Centre. Until 7.30pm. Email: swanagewarehamhockey@outlook.com
 19.00 Wm Bridge Club at the Library, South St. 552046
 19.00 Wareham Depression Support group. We meet on the 2nd and 4th Wednesday each month at Not Just Sundaes, South Street, Wareham. BH20, until 9pm. Ffi: John: 01929556315 or 07871 727278 or email: johnoneil905@yahoo.co.uk
 19.00 Swanage Town Band meet for our weekly practice in the Council Chamber, Swanage Town Hall. New musicians warmly welcomed. Please call David Cook (musical Director) for further information on: 01929 422909.
 19.00 Purbeck Runners meet at Beach Gardens Pavillion, Sw
 19.30 Swanage Musical Theatre meet Swanage Bay View Complex Rehearsal Room. All welcome. Ffi: 426161.
 20.00 Sw Youth Centre Club Night (Yr 9+) Till 10
 20.15 Dorset Buttons Morris Practice. URC Hall, Wm. 423234/421130
 20.30 Wm Swimming Club Adults. All standards + stroke improvement. Till 10
 22.00 Sw Youth Centre Club Night (16+) Till 11.59

EVERY THURSDAY

- 09.00 Swanage Painting Club. Catholic Church Hall, Rempstone Rd, Sw. Friendly group. New members including beginners welcome. Till 1pm. Ffi: Jane on 01929 427078.
 09.00 Carey Crafters meet every Thursday at Carey Hall, Mistover Road, until 12.30pm (come anytime between). No age or gender restriction. All crafts welcome - we have a wide variety! Come along and share your craft or learn a new one! Contact Donna on 07870 993311 or Helen on 07368 352737 for further information.
 09.30 Play and Learn at Chapel Lane, Swanage, till 11am.
 09.30 Well Baby Clinic at Stretche Road, Wareham, until 12 noon.
 09.30 Swanage Tennis Club at Beach Gardens, Sw. Free Matchplay taster session for prospective new members. First 3 sessions are free. Until 11am.
 09.30 Sensory Play for under ones, at Bovington Centre until 10.30am
 10.00 Wyvern Savings & Loan Credit Union opens until 12 noon at Not Just Sundaes, South Street, Wareham, opposite the Library. A secure place to save and loans available at fair rates. Call in for a cuppa and a chat, or call 01305 268444.
 10.00 Wm Parent & Toddler Group During term Parish Hall, Quay Till 11.45. 556806
 10.00 A Place Of Welcome at 103 High St. Sw. Friendly drop-in for everyone, providing a free cup of tea or coffee, a listening ear, conversation and basic information. Everyone welcome, whatever the circumstances. Until 12 noon.
 10.00 Tea, Coffee, Biscuits at Queensmead Hall, Sw. Till 11am. Adm 50p
 10.00 Volunteer Centre Drop-In at Wareham Library till 12pm. Find our about volunteering to support community groups & charities.
 10.00 Wareham Croquet Club meet at the Recreation Ground until 5pm. New members and visitors welcome. Call Tony on 01929 550190 or Lesley on 01929 553927 or email warehamgolfcroquetclub@hotmail.com
 10.30 Mid-Week Market Morning Service URC, Church St, Wm. Prayer requests to Revd. Simon Franklin 556976
 10.30 Woodworking with Bernard and Terry at the Purbeck Workshop in Wool. The Workshop provides craft activities free of charge to those touched by cancer - friends and family are welcome too. D'Urberville Centre, Collier's Lane, Wool. www.purbeckworkshop.org 07757 776907. www.purbeckworkshop.org Phone: 07794 479208

WEEKLY EVENTS

- 11.00 Sensory Play for 1-4yrs old at Bovington Centre, until 12 noon.
 11.30 Home Producers Market. Wareham to be added to the diary. Every Thursday from 7am to 11:30 in the United Reformed Church, Church Street, Wareham2
 13.30 Under 1 year olds at Wareham's Children's Centre, Stretche Rd, Wm. Anti-natal mums welcome. Till 3pm. Ffi: 552864.
 13.30 Toddler Group. All Saints' Church, Sw. 423937. Till 3pm (Term times)
 14.00 Swanage Town Walk. Local historian takes walks lasting 90 minutes. Meet outside the Museum in the 'Square'. No charge but voluntary contributions welcome.
 14.00 Wareham Happy Cafe. Friendly conversation, talks, activities and some fun to put a spring in your step! Everyone welcome. Held at the Not Just Sundaes Cafe in South Street, Wareham. BH20 4LU. From 5th March 2020 onwards. FREE. Until 3.30pm.
 14.00 Studland Chair-based Exercise in the Village Hall, Studland. Ffi: Julie on 558139 or email: jbrad@uwclub.net
 14.15 Sw Over-60s Meet in the Rectory Classroom, Swanage, Sw. All Welcome.
 17.45 Swanage Youth Club. Learning Difficulties and disability (age 11-25) night. Till 7.30pm
 18.15 Sw Cricket Club Practice till 9pm
 19.00 Health Qigong: Fitness and relaxation. Till 8pm. With Penny at Furzebrook VH, Wm. Ffi 07969925502
 19.15pm – Swanage Adults five-a-side football, Swanage School sports hall, until 8pm. Casual kickabout, individuals and teams of all abilities welcome. Phone Matt on 07944 292845
 19.15 Wm Town Band Brass & Woodwind players welcome. Ffi, call: 551478 or 01202 242147.
 19.30 Purbeck Arts Choir meet for rehearsals, with conductor David Fawcett, at St Mary's School, Northbrook Road, Swanage. Sept-May. All welcome. For more information please phone Liz Roberts 01929 481419
 19.30 Swanage Youth Club Youth Action (year 7 - sixth form). Till 9.30pm
- EVERY FRIDAY**
- 08.45 Coffee @ 112 - Drop In For Coffee! Catch up with friends at 112 High Street (United Reformed Church) in Sw. Cake and bacon butties. Fair trade stall. Donations for 'Besom in Purbeck' and church funds.
 09.30 Health Qigong: Fitness and relaxation. Till 10.30am. With Penny at Furzebrook VH, Wm. Ffi 07969925502
 09.30 Little Fishes Baby and Toddler Group. Catholic Church Hall, Rempstone Road, Swanage. Term time only. Until 11.30am. Ffi: Alex on 07904 412067.
 10.00 Table Tennis Club Methodist Ch. hall, High Street, Sw. All ages/abilities welcome. Steve: 424591, Malcolm: 427695
 10.30 Do you want to volunteer in Swanage? Meet the team at the Volunteer Bureau in Swanage Library! Until 12.30pm.
 11.00 Swanage Library Rhyme Time, ages 0-4, until 11.30am.
 11.00 Toddler Time For Under 5s And Carers. Wareham Library. Stories, songs and crafts. Every Friday, including school holidays. Ffi: 01929 556146
 18.00 Purbeck War-Game & Model Club. Royal British Legion, Sw. 426096.
 18.00 Sw Youth Centre Club 12-13 (Yr 7-9) Till 8

- 18.00 Purbeck Youth Choir at the United Reformed Church Hall, Sw. 8-18 years old. Till 7pm. Ffi: Jay Buckle on: 07947 866945
 18.30 Sw Bridge Club Mowlem Community Room. 421840
 19.00 Sw Youth Centre Seniors Club Night (Yr 9+) Till 9.30pm.
 19.30 Informal Lesbian Social Group meets each Friday for fun, laughter and to make new friends. Ffi, contact Karen by email at: outinpurbeck@gmail.com
 20.00 Sw Youth Centre Live Bands (as advertised) Till 10pm.
 22.00 Sw Youth Centre Late Session (Yr 9+) till 11.59pm (members free)

EVERY SATURDAY

- 08.00 Purbeck Runners meet at the Mowlem, Sw. 4/5 mile run.
 09.00 Sw CC U11 - U15 Practice till 10.30
 09.00 Swanage Self Defence FUNDamentals for ages 4-12 years at Swanage Methodist Church, Sw. For a FREE taster session, contact Ian on: 07888660225 or email: swanageSMA@gmail.com and quote 'Purbeck Gazette'
 09.30 Sw CC U9 & U10 Practice & Kwik Cricket till 10.30
 10.00 Tea, coffee and home-made cakes in the Parish Hall on Wareham Quay during the Community Market. Til 2pm. Bric-a-Brac stall weekly. Christian bookstall most weeks. All welcome for a warm-up and a friendly chat.
 11.00 Lego and Megablok Mayhem at Swanage Library, until 12 noon.
 Saturday, 6 August, 2-5pm: A traditional village fete in the lovely grounds of The Old Rectory, Church Knowle, BH20 5NG. Fun for all the family with children's games and activities, skittles, coconut shy and tug-of-war! Plenty of stalls selling everything from cakes and plants to books and bric-a-brac. Pimm's tent, cream teas and barbecue, brass band and grand draw. Please note: Cash only event.

EVERY SUNDAY

- 09.00 Purbeck Runners meet at the Mowlem, Sw. 8+ mile run.
 10.00 Arts and Crafts Market at the Mowlem in Swanage. A wide range of local art for sale, including pottery, glass, cards, fabric and much more! To book your table, or for more information, call Tony on 01929 421321.
 10.30 10.30 Stoborough Baptist Church - would love to welcome you - for meeting details please call 01929 550309 or website www.stoboroughbaptistchurch.co.uk

ACORN LODGE ODDFELLOWS: Events all held at the Three Legged Cross Hall, Wimborne: Saturday, August 6, noon – lunch and quiz, including cake stall and raffle, £4; Tuesday, 13 September, 2pm – musical quiz and sing-song with afternoon tea, £3.50; Tuesday, 11 October, 2pm – photo talk by Jurassic Coast Photography and afternoon tea, £3.50; Saturday, 19 November, 10am – Christmas card – iris paper folding – making and coffee morning; Saturday, 10 December, 1.30pm – Christmas buffet, £4. Contact social secretary Julia Taylor to book places.

Swanage Adults 5-aside Football
 Swanage School Sports Hall, til 8pm
 casual kickabout, individuals and
 teams of all abilities welcome
Matt: 07944 292845

Local Services

**Manufacturers of
 Purpose-made Hard
 & Softwood Joinery**

01202 622441
 info@elegantjoinery.co.uk
 www.elegantjoinery.co.uk

**OLD BYGONES
 & COLLECTIBLES**
*Rural, garden & agricultural items
 bought & sold*
 Tim, 01725 517268 or 07311 478301

PROPOINT
 Call for a realistic quote 01929 421663
 07768 660833
 Re-pointing roofing
 Wall tie replacement
 Cavity cleaning
 Tray & lintel replacements
 fascias & Guttering

KDL PLUMBING & HEATING
 Immersion heaters, cylinders, cold water tanks,
 ballvalves, taps, showers, bathrooms, radiators,
 heating problems and more!
 FREE ESTIMATES & ADVICE - NO CALL OUT CHARGES
01929 421632
0747-512-8249

Man & Van
available to hire
Rubbish Clearance
*Half the price of a skip -
 and we do all the work!*
07767 479438
Fully licensed & insured

To advertise your business in
The Purbeck Gazette
 contact
Donna Garner
07714 289411



Local Services

DAVE RODBOURNE
WINDOW CLEANING
 FULLY INSURED
 FREE QUOTES
 Email: dave@rodbourne2016@gmail.com
Tel: 07825 229 127

JL Landscaping & Garden Maintenance
 General Garden Maintenance
 Grass & Hedge Cutting (as and when required)
 Turfing & Lawn Care
 Hedge, Shrub & Tree Pruning
 Fence Treatment & Outdoor Painting
 Jet Washing
 General Clean-ups
 Decorative Stone, Patios & Paths
 and much more
07898140739
We return all our phone calls within 24 hours

DIRTY OVEN!
Clean Ovens Domestic Ltd
DOMESTIC OVEN CLEANING
 NON caustic, fresh solution every time.
 Hobs, Extractors, Ranges and Microwaves
 Covering the Whole of Dorset
PHONE 0800 707 6629 MOBILE: 07563 693 145

Alan Yates
AYE Electrical LTD.
Ready to take charge of your electrical needs
 All electrical work undertaken, Part P Registered,
 Fully Insured, Purbeck Based
07778 882328
 alan.yates@aye-electrical.co.uk

NJA Specialist Tree Care
 All aspects of Tree Surgery
 & Hedgework undertaken
 Fully insured and NPTC Qualified
 Free Quotations and advice
07703 210647 or 01929 481600

FENCING
 All Types Supplied & Erected
FREE ESTIMATES
 JL Corbin Fencing Contractors
01929 552 061 07774 207 924

J.A. CONSTRUCTION
 (DORSET) LTD.
 Specialist in Purbeck Stone Walling
 General Building, Extensions,
 Renovations, Roofing, New Builds
 and all types of Ground Work.
 Also available for Plumbing,
 Electrics & Carpentry.
 Tel: 01929 554249
 Fax: 01929 552294
 Mobile: 07973 388190
 www.jaconstructiondorset.co.uk
 Email: sales@jaconstruction.co.uk

A.D.S. PROPERTY SERVICES
 General Builder
 EXTENSIONS,
 KITCHENS,
 BRICKWORK,
 PATIOS, FENCING,
 PLASTERING,
 DECORATING,
 ROOF REPAIRS,
 & CHIMNEYS
 adspropertysvcs@gmail.com
 Tel. Andy Smith 01929 553535
 Mobile 07743 440 906
 City Guides

JIM BAGGLEY
BUILDING SERVICES Ltd
 Renovations,
 Alterations,
 Extensions,
 Kitchen Fitting,
 New Cut Roofs,
 Loft Conversions,
 Upvc Windows & Doors,
 Carpentry & Joinery
Tel: 01305 852311 or
07469 793452
 Email: jessjimbaggleyltd@gmail.com

LOW COST SECURE SELF STORAGE



THE STORAGE CONTAINERS
 LOCAL SELF STORAGE

- Rent from £27.50 per week
- CCTV, Palisade Fencing & 24/7 access
- Conveniently located on the Puddletown Road just outside of Wareham

Call us on **01929 401585** to discuss your requirements

Local Services

**Carpet & Upholstery
Cleaning**

Highest standards guaranteed
Fully certified & insured
No hidden charges & no VAT
Call Steve at **Pile-Up** on
01929 553861 or 07974 529017

TERMINATOR PEST CONTROL
WASPS • BEES • FLEAS • RATS
MICE • ANTS • SQUIRRELS • BIRDS

All Purbeck areas covered
01929 554898
MOBILE: 07831 351877



**ROOFING
SPECIALIST
SPARROW'S**
Over 30 years
Membership Federation of Master Builders

NO JOB TOO SMALL

01929 421156
07974 077885
The Premier Trade Organisation
High Performance Flat Roofing Specialists
Re-Roofing - Slating & Tiling
Roof Repairs - UPVC Facias & Gutters
Chimneys Removed or Repointed
sparrowroof@gmail.com

Whizzbits
Computer Sales & Support

Virus/Spyware removal • Upgrades & repair
Networking • Windows problems fixed
Wireless set-up • Internet & e-mail
Tel: **01929 421989** or **07900 992110**
Call Pete for a prompt & reliable service

wf SNOOK

Established in Purbeck since 1952

- SPECTUS. PVC-U Aluminium & Timber Framed Windows
 - Doors • Patio Doors
 - Bi-Folding Doors • Window Repairs
 - Misted Unit Repairs • Garage Doors
 - 'Kestrel' PVC-U Facia, Soffit, Mouldings etc
 - Conservatories • Roof Atriums
- ~ Fully Qualified ~

All work
guaranteed

TEL: 01929 481 581
enquiries@wfsnookandsonltd.co.uk
www.wfsnookandsonltd.co.uk

**OVEN & WASHING MACHINE
REPAIRS**
and other appliances

Washing Machines, Dishwashers,
Tumble Dryers, Electric Cookers,
Fridges, Freezers.

Colin Shailer.
01929 554809 07711 165062
colinshailer@gmail.com



CMS Electrical Repairs

DIGITAL AERIAL UPGRADES
*SKY & FREESAT INSTALLATIONS
*LCD/PLASMA SALES & REPAIRS
*WALL MOUNTING & INSTALLATION SERVICE
*REPAIRS TO DOMESTIC GOODS

REPAIRLINE
7 WEST STREET WAREHAM
Members of Checkatrade.com **01929 554692**

Michael B. Alberry
DECORATOR
Property Decoration & Renovation
07796 640538
01929 424882

REDHILL
Windows
Swanage based
Window &
Door Company
FENSA

Installers of

Windows - Doors - Bi-fold Doors - Conservatories
Fascias - Soffits - Guttering - Cladding
Window & Door Repairs
Misted Sealed Units replaced
UPVC - Aluminium - Timber
Ggfi Insurance back guarantee • 10 years guarantee

For a free, no obligation quote contact us on:
Office 01929 424199 Mobile 07538 950 230
Email - redhillwindowsltd@hotmail.co.uk
Web - www.redhillwindowsltd.co.uk
20 years experience working in Purbeck

Garage Doors

New Installations
Repairs
Servicing
Automation



Dorset Doors Ltd - Wareham
01929 660789

SOOTY THE SWEEP
Local Full Time Chimney Sweep for 30 years
Nacs, Hetas, City & Guilds Qualified
Be safe! Reliable Advice Given

Covering All of Dorset

All chimneys and flues swept
Woodburner Servicing
Cows, bird nets, pots, etc.
Stoves, liners, grates, fire tools
Kiln dried LOGS, CCTV Surveys
Insured and certificates given.



01929 554700/427427
www.sootythesweep.com

**SWANAGE
& DORSET**

SCAFFOLDING & ROOFING

All aspects of Residential & Commercial Scaffolding
Flat Roofing - Re-roofs, Slate or Tile, All repair works
Emergency Call Outs - Free Quotations & Estimates
Temporary Roof Coverings - Fully Insured

OUR PRICE WON'T BE BEATEN

01929 424553 01258 858214
07813 346993



Jones & Prior
Plumbing and Heating Engineers

Boiler installations, services and repairs
General plumbing, Bathrooms and
Landlord gas safety certificates

Covering Swanage and the
surrounding areas

07584 260838

Bathrooms
Ensuites - Wetrooms - Cloakrooms
Mobility - Bath out shower in

Design & Installation Service

- Large modern showroom with inspirational displays
- No job too small
- Free site survey and quotations

Unit 9, Justin Business Park,
Sandford Lane, Wareham BH20 4DY
01929 551963 www.roomh2o.co.uk

NEVER PAINT YOUR EXTERIOR WALLS AGAIN!

Imagine having your exterior walls coated and never having to paint them again...



Before



After

TRADITIONAL PAINT

- 4-5 Years maintenance cycle
- No energy efficiency qualities
 - Non-self cleaning
 - Absorbs moisture
- Prone to break down quicker

PROPERLA

- 25 Years + maintenance cycle
- Tested to improve internal temperature
- Self cleaning ● Water repellant ● Highly breathable

SUMMER OFFER



FROM COUNTRYWIDE

With this German engineered product available in 10 stunning colours. We are the south west's only Platinum Installer with more than 500 houses coated and have limited availability in August & September. **Check out our reviews!**

"We are offering all Purbeck Gazette readers a fantastic discount of 15% off exterior wall and roof coatings."



Book a free home survey and estimate at Countrywide-surveys.co.uk or call **0800 246 5145**
Quote: **house 2022**



NEVER PAINT AGAIN!



Local Services

Countryside Tree Surgeons
 Professional specialists - NPTC certified tree surgeons
 All aspects of Tree Surgery, Hedge Trimming & Fencing
FREE QUOTATION
 Established 18 years. Fully Insured. Family-run business
 Please call Wayne Pitman

0800 389 3992 (office)
 01929 551816 (home)
 07979 447777 (mobile)

Bug Busters Pest Control
 Professional Reliable Service
 Wasps, Mice, Rats, Ants, Flies, Fleas,
 All dealt with promptly & efficiently.

All Dorset areas covered Tel: 01929 460011
 www.bugbustersdorset.com Mob: 07973 407027

Purbeck Chimney Sweep
 TEL: 01929 423244
 MOB: 07974 809779

ICS Always happy to help and advise

Buds of Mave
 Wedding Flowers & Funeral Tributes
 Bouquets Made To Order
 Contact Caroline for further details
 07966462974

LOCKSMITH
 Police recommended insurance approved locks available
 Additional Security for Garages & Gates, Key safes, Codelocks
 UPVC multipoint & Wooden door lock specialist
 Local Master Locksmith & Safe Engineer Service

07709 545701
 www.parrlocks.co.uk paul@parrlocks.co.uk

MALLWOOD ROOFING LTD
 Family business - all aspects of roofing, including:
 Built-up Felt, Cold Applied Liquid System
 Slating & Tiling
 All new roof coverings fully guaranteed

TEL: 01202 020063
 or 07950 972289 **Checkatrade.com**

BRIAN MOORE
 INDEPENDENT TELECOM ENGINEER
 (Ex-BT)
 Repair of phone lines & broadband
 HALF BT PRICES!!
 07858 458997 - 01929 554886

Ian Michie TREE CARE
 Professional & skilled arborists
 Tel: 01929 554281
 Mobile : 07837024558
 www.ianmichietreecare.com

from **REPAIR TO REPLACEMENT**
 Windows, Conservatories, Fasad & Glazing

Purbeck Windows & Conservatories Ltd
 Fensa

From **FREE QUOTATION**
 and prompt service,
 please call us on:
 07829 664381 or
 07734 134286
 purbconservatories.co.uk

BINDON ABBEY SCAFFOLDING
 WOOL - WAREHAM
 Reliable service and competitive pricing
 T: 07501 465192
 Email: bindonabbeysc scaffolding@outlook.com

SAM FOOKS
 General building and Garden maintenance
 Including: Pointing, Patios,
 Garden Walls and Fencing
 Tel: 07772 794056 / 01929 421250
 Email: samfooks1988@icloud.com

Purbeck Domestic & Trade Waste
 Fully Insured - Registered Waste Carrier

Domestic Clearances
 Commercial Clearances
 Garden Clearance
 Waste Electrical & Electronic Disposal
 White Goods
 Old Furniture & Beds
 Light Demolition

Evening and weekend collections available by appointment

Telephone: 01929 550 615
 Mobile: 07816 456 814
 pdtwdorset@gmail.com

Environment Agency Registered Waste Carrier
 Recycle
 Love where you Live

ARMISHAWS
 REMOVALS & STORAGE

Trustpilot
 TrustScore 4.4

Household Storage
 Safe. Secure. Simple.

Book your free quote today.

Blandford 01258 447005
 Dorchester 01305 231267
 Shaftesbury 01747 440426
 Sherborne 01935 316221
 Warminster 01925 984459
 Wincanton 01963 34065

www.armishaws.com

Insignia

The Shade and Shutter Company



From inspiration
to installation...
**Think
Insignia!**

**Think shutters.
Think Insignia!**

Bring style into your home with Plantation Shutters.
The ultimate window covering for privacy, light and temperature control. Choose from our wide range of styles, colours and premium materials.



Residential or commercial internal and external blind and awning specialists, Insignia has all the answers. Visit our showroom and see our extensive range of made to measure internal and external blinds, awnings and shutters at affordable prices, or call us today to arrange a free no obligation survey and quote

We come to you to advise, measure and price, without obligation

Telephone 01202 741671 | www.insigniashadeandshutter.co.uk
Insignia, 1-7 Ashley Road, Poole, Dorset BH14 9BS
 Opposite Homebase and John Lewis at Redlands Retail Park
 Open Monday - Friday 9.30am - 5.00pm and Saturday 9.30am - 3.00pm
 Follow us on Facebook @insigniaBlindsPoole and Twitter @insigniaBlinds1





PURBECK VALLEY FOLK FESTIVAL

18-21 AUGUST 2022

WEEKEND
TICKETS
FROM £105
INCL. CAMPING



SHOW OF HANDS
LOS DE ABAJO
N'FAMADY KOUYATE
SHOOGLENIFTY
MICHAEL MCGOLDRICK BAND
KATHRYN WILLIAMS' HONEYFEET
THE MAGIE ARC AMYTHYST KIAN



BENI KIRKPATRICK & THE EXCESS - MARTHA TILSTON
 LAURA CORTESI & THE DANCE CARDS (NEW) - GASPER MALI (NEW)
 ROB HERON & THE TEA PAD ORCHESTRA - MOSCOWDIE CLUB
 TOPIETTE (NEW) - STEVE AND BEN SINGERS BAND - BALLET FOLK
 GABRIEL NOROZI & THE OLIVERIAN POETS - GROSS - THE ONCE (NEW)
 NADIA BEUFORD & THE RAINBOW KALE BAND - BONFIRE RADICALS
 CALVIN GILGIAN - HATTLE OF RAIN - GOOD HABITS - THE LAST WILKINS
 THE NOBEL FOLK - THE PEOPLE VERBOS - DANGER GOAT - JEN DORAN TRIO
 JOHNNY PHILLIPS TRIO - DANA WYLLIE (NEW) - HANDS OF THE HERON
 FLY YET FLY - THE BIRD SWING - MESSIAES BAND - COPPER VIBER
 SOLANA - THE RICHARDOLLERS - HIGH SHELF REMEDY - GLENHOLLY
 THE SWAMP STOMP STRIKE BAND - PLASTIC JEEZUS - GLENN GUNNEY
 FERAL BERYL - OWL IN THE SUN - NATIONAL YOUTH FOLK ENSEMBLE
 THE MIGHTY ALLIANCE - MEDHA & HIS MERRY MEN - KATE GRACE HARRIS
 WARRIAN WHALERS - DEAD HORSE BAY - ADAM BEATIE + LOADS MORE!



MORE THAN JUST GREAT MUSIC...

CRAFT AREA

CROCHET - POTTERY
 TIE-DYE - STONE CARVING
 WILLOW WORKSHOPS
 BLACKSMITH - ORIGAMI
 PRINTING - CYANOTYPE
 TRADITIONAL WOOD TURNING
 PEBBLE PAINTING

KIDS' ACTIVITIES

STORYTELLING - GIANT SCRABBLE - FANCY DRESS - RHYME TIME
 TOY SWAPSHOP - THEATRE & GAMES WORKSHOPS - CRAFTS
 WISHING TREE - WELLY WANGING - HOOLA-HOOPING
 TREASURE HUNT - SPACE HOPPER OBSTACLE COURSE
 CIRCUS AREA: JUGGLING - UNICYCLING - DIABLOS - DEVILSTICKS
 STILT WALKING - ACROBATICS WITH INFLATABLE TUMBLE MAT

5 STAGES - 2 CEILIDHS - OPEN MIC - SESSIONS
 COMEDY - WORKSHOPS - POETRY - FIRE SHOWS

BEAUTIFUL LITTLE FESTIVAL ON A FARM WITH VIEWS ACROSS THE
 PURBECK HILLS AND CORFE CASTLE - EVERYONE'S FAVOURITE FESTIVAL

WWW.PURBECKVALLEYFOLKFESTIVAL.CO.UK

